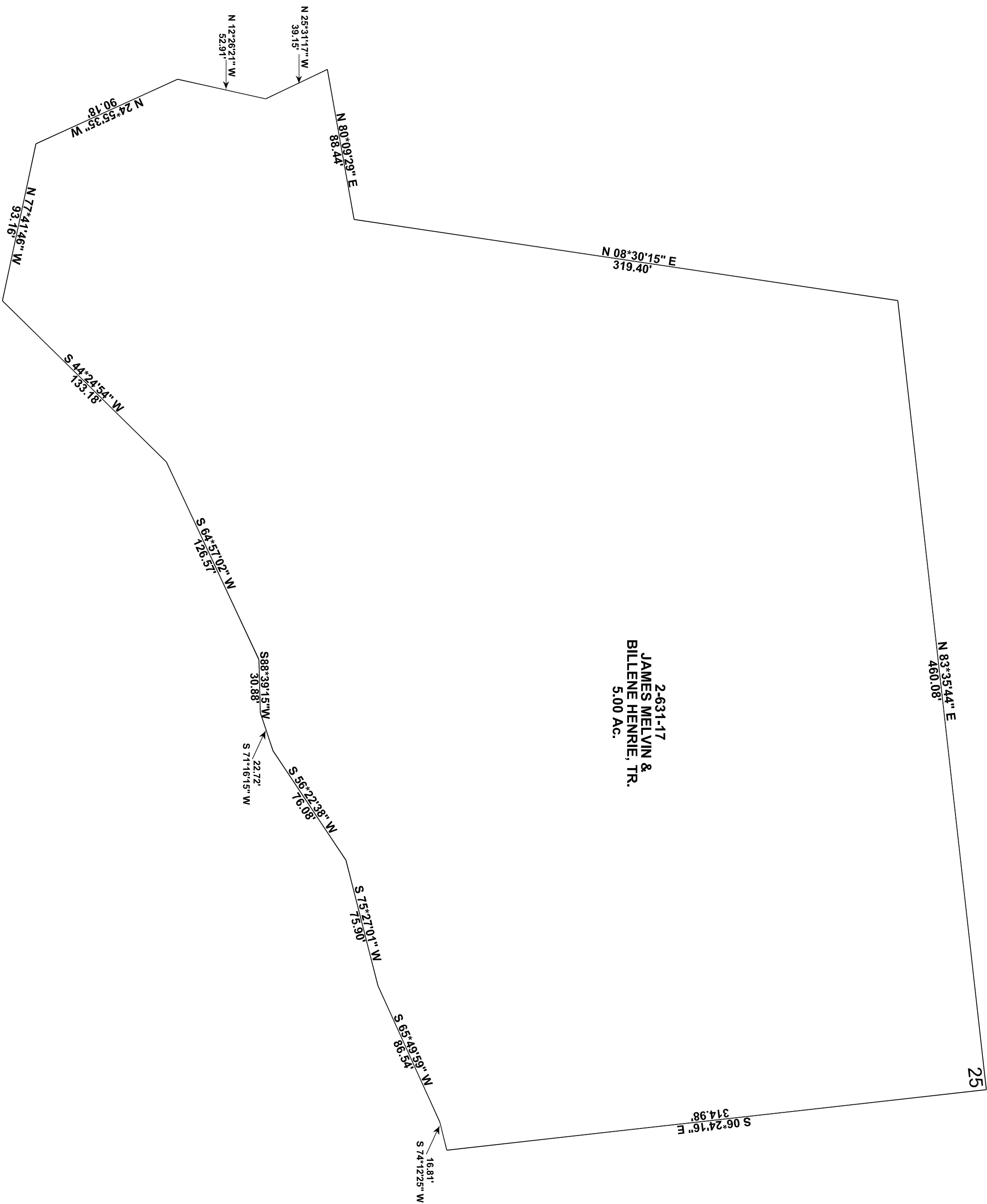


01/20/2016 10:17 AM

# CARBON COUNTY PLATS

THE HILL SUB, AMENDMENT 1, PHASE VI

PART OF SECTION 13, T14S, R9E, SLB&M



SCALE: 50 FEET = 1 INCH  
SEPT 7, 2016

Carbon County assumes no liability for errors or omissions in any information.