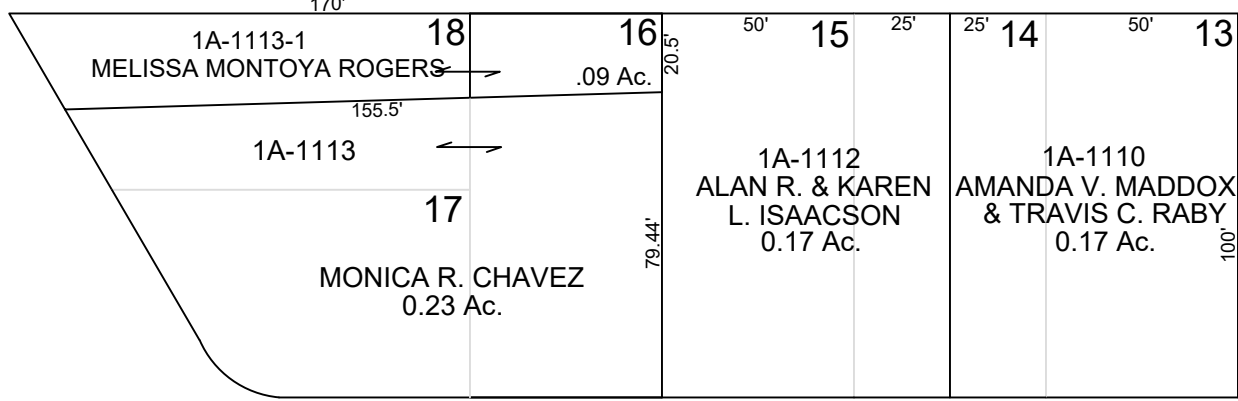
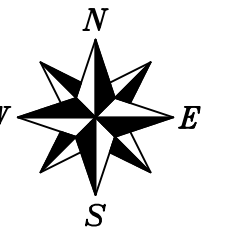
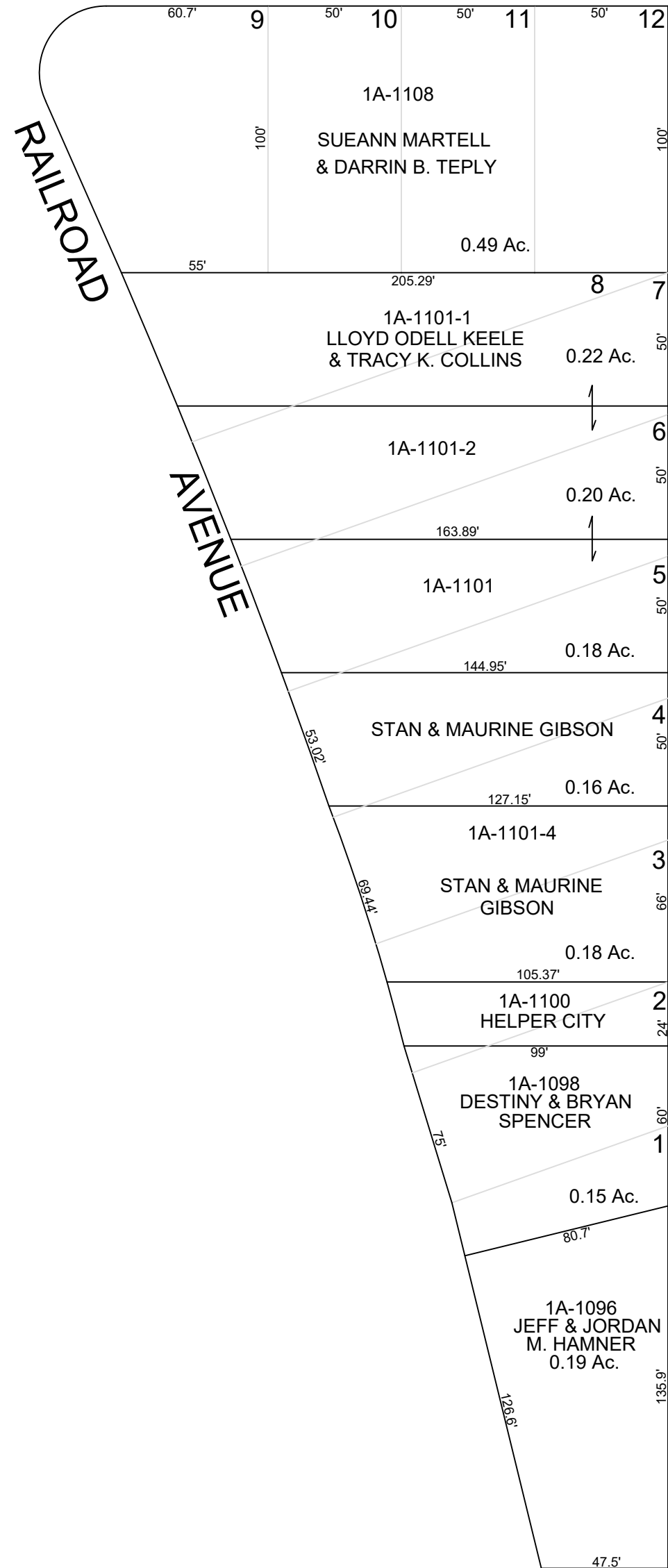


1A-289-1  
(BAL. IN SE4SE4 13-13-9)



"A" STREET



CARBON COUNTY PLATS  
HELPER CITY  
HOLLYWOOD ADDITION

SCALE: 50 FEET = 1 INCH  
FEBRUARY 7, 2019

Carbon County assumes no liability for errors or omissions in any information.