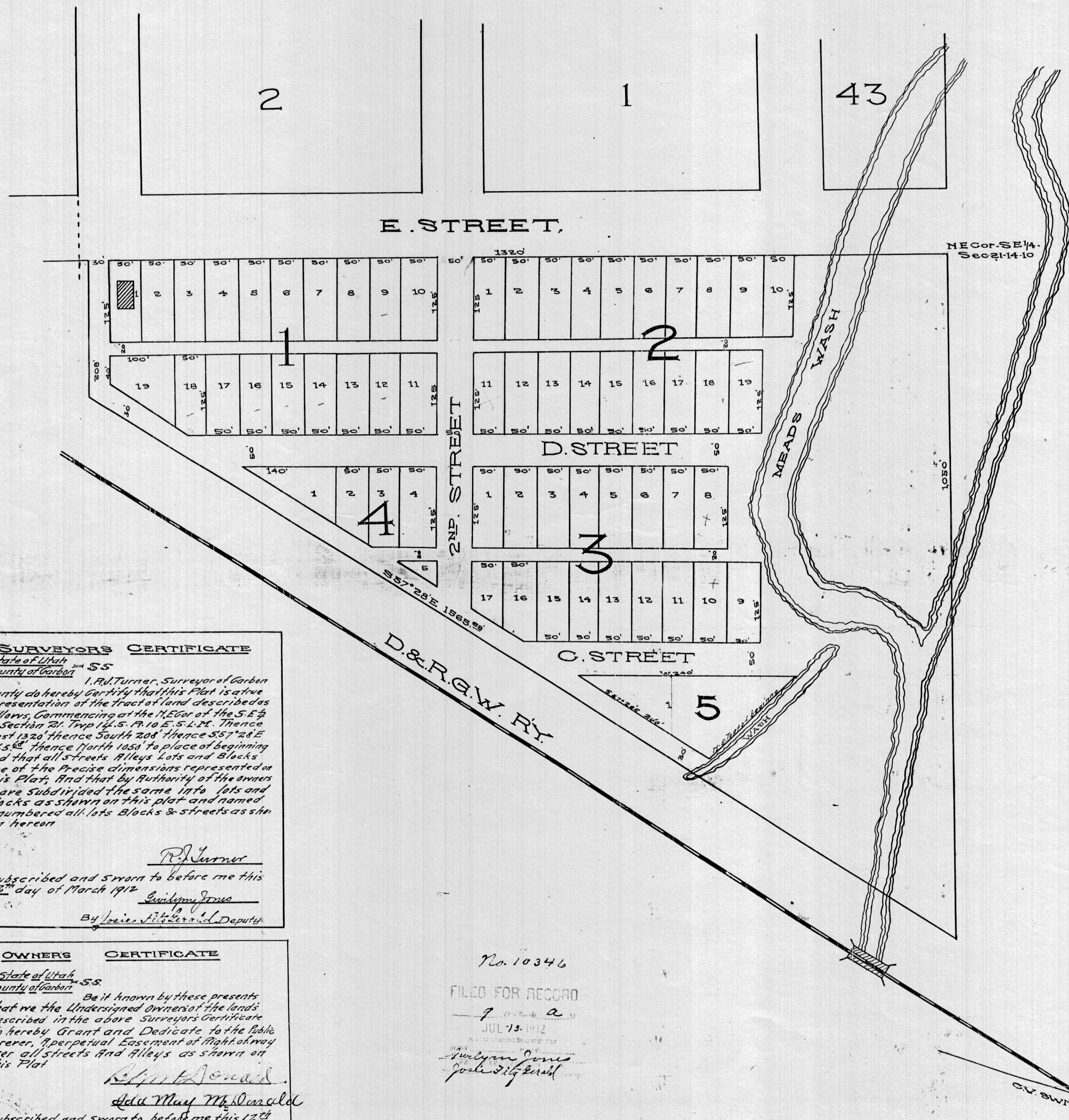


PLAT OF ISABELLA ADDITION

TO PRICE CITY UTAH  
SCALE 1"=100'



**SURVEYORS CERTIFICATE**  
State of Utah - SS  
County of Garfield

I, R. Turner, Surveyor of Garfield County do hereby certify that this Plat is a true representation of the Tract of Land described as follows, Commencing at the NE Cor. of the S.E. 1/4 of Section 21, Twp. 14 S., R. 10 E., S. 14 T. Thence West 132.00' Thence South 80.00' Thence S57°28'E 105.00' Thence East 140.00' to the place of beginning and that all streets, Alleys, Lots and Blocks are of the precise dimensions represented on this Plat. And that by authority of the laws there provided the same into lots and blocks as shown on this plat and named & numbered all lots, blocks & streets as shown hereon.

*R. Turner*  
Subscribed and sworn to before me this 12th day of March 1912.  
County Clerk  
By *Carroll J. Thomas* Deputy

**OWNERS CERTIFICATE**  
State of Utah - SS  
County of Garfield

Be it known by these presents that we the undersigned owners of the lands described in the above Surveyors Certificate do hereby Grant and Dedicate to the Public forever, Perpetual Easement of Right of Way over all streets and Alleys as shown on this Plat.

*Carroll J. Thomas*  
*Ada May McCarroll*  
Subscribed and sworn to before me this 12th day of March 1912.  
County Clerk  
By *Carroll J. Thomas* Deputy

Approved by the board of County Commissioners in regular session this 14th day of March 1912 and ordered filed for record.

*Carroll J. Thomas* Clerk  
*Carroll J. Thomas* Board of County Commissioners

Approved & Accepted & ordered Amended to Price City Municipal Corporation, by the Mayor & City Council this 19th day of March 1912 in regular session.

*Ed. L. Lusk* Recorder  
*W. J. Olson* Mayor of Price City

No. 10346  
FILED FOR RECORD  
JUL 15 1912  
County Clerk  
*Carroll J. Thomas*

ISABELLA