

North American Coal Corp.  
Nov 8 2 23 PM '72  
3 Plates  
122  
COUNTY RECORDER

Entry No. 125194  
Indexed   
Abstracted   
Rec. Fee 72.50

**SURVEYOR'S CERTIFICATE**

I, John S. Seal do hereby certify that I am a Registered Civil Engineer, and/or Land Surveyor, and that I hold Certificate No. 1050, as prescribed under the laws of the State of Utah. I further certify that by authority of the Owners, I have made a survey of the tract of land shown on this plat and described below, and have subdivided said tract of land into lots and streets, hereafter to be known as **KENILWORTH SUBDIVISION** and that the same has been correctly surveyed and staked on the ground as shown on this plat.

COURSE	DIST.	BOUNDARY DESCRIPTION	REMARKS
<b>TRACT A</b> Beginning at the South 1/4 corner of Section 16, T13S R10E, SE corner of tract.			
N 89°54' W	725.00'	With section line to SW corner	
N 0°06' E	690.00'	to NE corner	
S 89°54' E	725.00'	to NE corner on 1/4 section line	
S 0°06' W	690.00'	with 1/4 line to beginning, containing 11.484 acres.	
<b>TRACT B</b> Beginning at the South 1/4 corner of Section 16, T13S R10E, SW corner of tract.			
N 0°06' E	690.00'	with 1/4 line to NW corner	
S 89°54' E	990.00'	to NE corner	
S 0°06' W	690.00'	to SE corner on section line	
N 89°54' W	990.00'	with section line to beginning, containing 15.692 acres.	
<b>TRACT C</b> Beginning at the North 1/4 corner of Section 21, T13S R10E, NE corner of tract.			
N 0°06' E	725.00'	with section line to NW corner	
S 0°06' W	400.00'	to SW corner	
S 89°54' E	423.00'		
S 44°54' E	367.70'		
S 89°54' E	42.00'	to SE corner on 1/4 line	
N 0°06' E	660.00'	with 1/4 line to beginning, containing 7.684 acres.	
<b>TRACT D</b> Beginning at the North 1/4 corner of Section 21, T13S R10E, NW corner of tract.			
S 0°06' W	750.00'	with 1/4 line to SW corner	
S 89°54' E	480.00'		
S 23°26' E	745.00'		
N 66°34' E	400.00'		
N 23°26' W	362.00'		
N 66°34' E	292.00'	to SE corner	
N 23°26' W	904.00'	to NE corner on section	
N 89°54' W	917.00'	with section line to beginning, containing 22.664 acres.	

10/18/72  
DATE

**OWNER'S DEDICATION**

Know all men by these presents that The North American Coal Corp., owner of the above described tract of land, having caused same to be subdivided into lots and streets to be hereafter known as the

**KENILWORTH SUBDIVISION**

do hereby dedicate for perpetual use of the public all parcels of land shown on this plat as intended for Public use.

In witness whereof, The North American Coal Corporation has caused its corporate name to be subscribed and its corporate seal to be affixed to these presents this 13<sup>th</sup> day of October, 1972.

Signed in the presence of: The North American Coal Corporation  
Richard S. Reamer President  
Walter F. Johnson Assistant Secretary

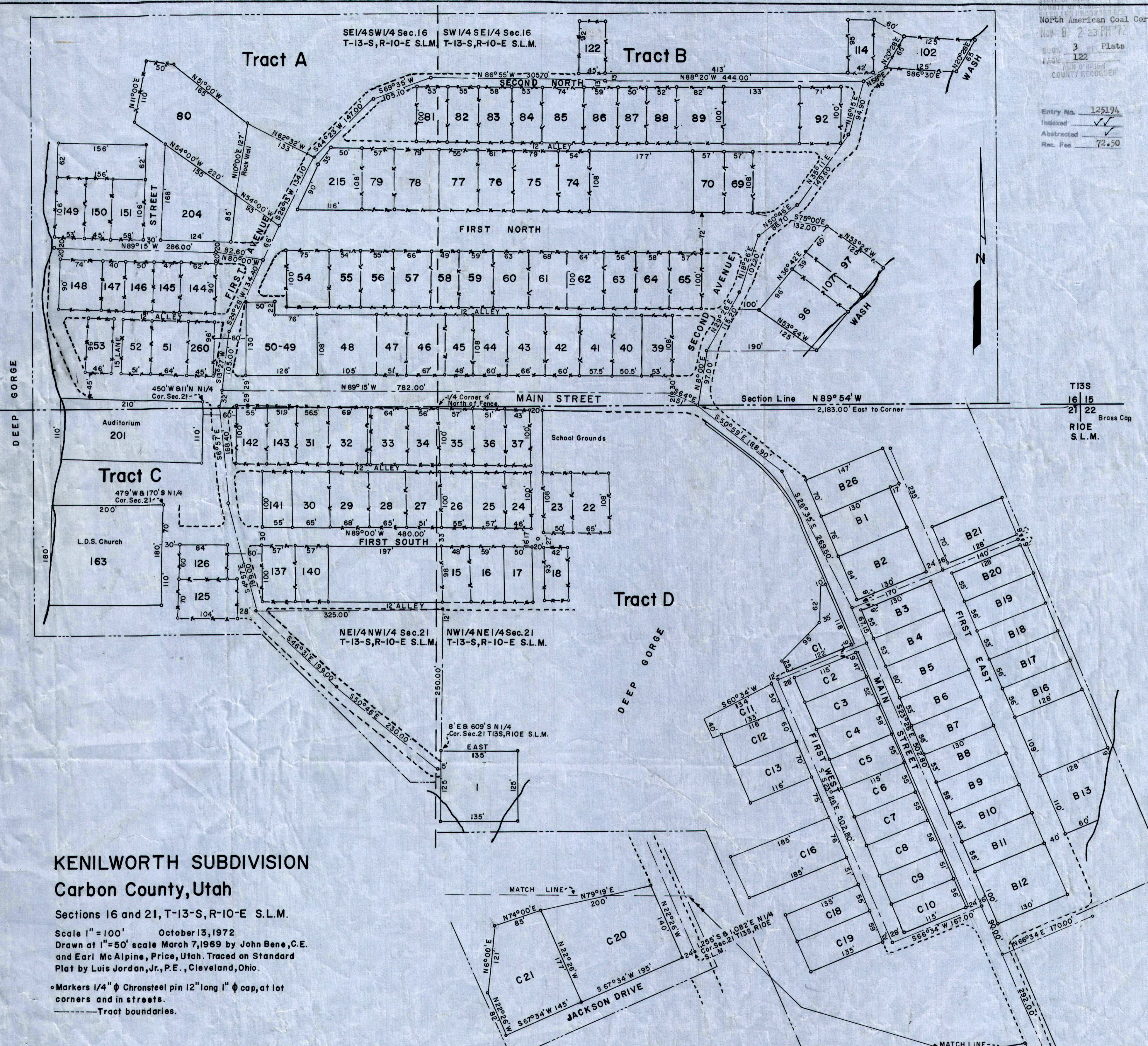
**ACKNOWLEDGMENT**

STATE OF OHIO  
County of Cuyahoga, S.S.

On the 18<sup>th</sup> day of October A.D. 1972, personally appeared before me, the undersigned Notary Public, in and for said County of Cuyahoga in said State of Ohio the signer(s) of the above Owner's dedication, two in number, who duly acknowledged to me that they did signed it freely and voluntarily and for the uses and purposes therein mentioned.

MY COMMISSION EXPIRES Oct. 21, 1975  
Richard S. Reamer  
NOTARY PUBLIC  
RESIDING IN Cuyahoga COUNTY

SALT LAKE BASE & MERIDIAN



**KENILWORTH SUBDIVISION**  
Carbon County, Utah

Sections 16 and 21, T-13-S, R-10-E S.L.M.  
Scale 1" = 100' October 13, 1972  
Drawn at 1" = 50' scale March 7, 1969 by John Bene, C.E. and Earl Mc Alpine, Price, Utah. Traced on Standard Plat by Luis Jordan, Jr., P.E., Cleveland, Ohio.  
• Markers 1/4" φ Chromsteel pin 12" long 1" φ cap, at lot corners and in streets.  
--- Tract boundaries.

<b>PLANNING COMMISSION</b> APPROVED THIS <u>26<sup>th</sup></u> DAY OF <u>October</u> A.D. 1972 BY THE COUNTY PLANNING COMMISSION. <u>John J. Nelson</u> CHAIRMAN, CO. PLANNING COMM.	<b>BOARD OF HEALTH</b> APPROVED THIS <u>26<sup>th</sup></u> DAY OF <u>October</u> A.D. 1972 BY THE COUNTY BOARD OF HEALTH. <u>Ronald G. Lewis, M.D.</u> DIRECTOR, CO. BOARD OF HEALTH	<b>FLOOD CONTROL DEPT.</b> APPROVED THIS _____ DAY OF _____ A.D. 19____ FLOOD CONTROL COORDINATOR	<b>SURVEYOR'S CERTIFICATE</b> I HEREBY CERTIFY THAT THIS OFFICE HAS EXAMINED THIS PLAT AND IT IS CORRECT IN ACCORDANCE WITH INFORMATION ON FILE IN THIS OFFICE. <u>10-19-72 Earl H. McAlpine</u> DATE COUNTY SURVEYOR	<b>APPROVAL AS TO FORM</b> APPROVED AS TO FORM THIS <u>31<sup>st</sup></u> DAY OF <u>October</u> A.D. 1972 <u>Dan C. Keller</u> COUNTY ATTORNEY	<b>COUNTY COMMISSION</b> PRESENTED TO THE BOARD OF COUNTY COMMISSIONERS THIS <u>8</u> DAY OF <u>November</u> A.D. 1972 AT WHICH TIME THIS SUBDIVISION WAS APPROVED AND ACCEPTED. <u>Billy Jones</u> ATTNEY IN CHARGE <u>Guido Raehle</u> CHAIRMAN, BD. OF CO. COMM.	<b>RECORDED # 825194</b> STATE OF UTAH, COUNTY OF CARBON RECORDED AND FILED AT THE REQUEST OF <b>THE NORTH AMERICAN COAL CORPORATION</b> DATE <u>11/8/72</u> TIME <u>2:23 P.M.</u> BOOK <u>3</u> of <u>Plat</u> PAGE <u>122</u> <u>Ann O'Brien</u> COUNTY RECORDER
---	---	---	--	--	--	--

KENILWORTH