

COUNTY APPROVALS

MINOR SUBDIVISION PLAT

COUNTY SURVEYOR'S CERTIFICATE

I HEREBY CERTIFY THAT I HAVE HAD THIS PLAT EXAMINED BY THIS OFFICE AND THAT IT IS CORRECT AND IN ACCORDANCE WITH INFORMATION ON FILE.

8-11-81
DATE

Carl F. Baker
CARBON COUNTY SURVEYOR

COUNTY PLANNING & ZONING COMMISSION

PRESENTED TO THE CARBON COUNTY PLANNING & ZONING COMMISSION THIS 17 DAY OF August 1981, AT WHICH TIME THIS MINOR SUBDIVISION WAS APPROVED AND ACCEPTED

Harold R. Marston
PLANNING & ZONING COMMISSION CHAIRMAN

LEGAL DESCRIPTIONS OF LOTS

LOT NO. 1

BEGINNING AT A POINT WHICH LIES 327.94 FT. EAST AND 50.81 FT. NORTH FROM THE SOUTH 1/4 CORNER OF SECTION 33, T.14S., R.10E., S.L.B. & M., AND RUNNING THENCE N.86°53'32"E. 345.2 FT.; THENCE N.01°05'48"W. 932.6 FT.; THENCE S.89°41'54"W. 161.3 FT.; THENCE S.00°04'48"E. 538.5 FT.; THENCE S.89°41'49"W. 174.0 FT.; THENCE S.00°58'49"E. 410.9 FT. TO THE POINT OF BEGINNING. CONTAINS 5.23 ACRES.

LOT NO. 2

BEGINNING AT A POINT WHICH LIES 728.64 FT. EAST AND 566.78 FT. NORTH FROM THE SOUTH 1/4 CORNER OF SECTION 33, T.14S., R.10E., S.L.B. & M., AND RUNNING THENCE N.89°41'54"E. 200.0 FT.; THENCE N.01°05'48"W. 435.6 FT.; THENCE S.89°41'54"W. 200.0 FT.; THENCE S.01°05'48"E. 435.6 FT. TO THE POINT OF BEGINNING. CONTAINS 2.00 ACRES.

LOT NO. 3

BEGINNING AT A POINT WHICH LIES 928.63 FT. EAST AND 567.83 FT. NORTH FROM THE SOUTH 1/4 CORNER OF SECTION 33, T.14S., R.10E., S.L.B. & M., AND RUNNING THENCE N.89°41'54"E. 200.0 FT.; THENCE N.01°05'48"W. 435.6 FT.; THENCE S.89°41'54"W. 200.0 FT.; THENCE S.01°05'48"E. 435.6 FT. TO THE POINT OF BEGINNING. CONTAINS 2.00 ACRES.

LOT NO. 4

BEGINNING AT A POINT WHICH LIES 1,128.63 FT. EAST AND 568.89 FT. NORTH FROM THE SOUTH 1/4 CORNER OF SECTION 33, T.14S., R.10E., S.L.B. & M., AND RUNNING THENCE N.89°41'54"E. 200.0 FT.; THENCE N.01°05'48"W. 435.6 FT.; THENCE S.89°41'54"W. 200.0 FT.; THENCE S.01°05'48"E. 435.6 FT. TO THE POINT OF BEGINNING. CONTAINS 2.00 ACRES.

LOT NO. 5

BEGINNING AT A POINT WHICH LIES 1,169.41 FT. EAST AND 319.12 FT. NORTH FROM THE SOUTH 1/4 CORNER OF SECTION 33, T.14S., R.10E., S.L.B. & M., AND RUNNING THENCE N.89°41'54"E. 488.2 FT.; THENCE N.44°33'32"E. 282.1 FT.; THENCE S.89°41'54"W. 689.5 FT.; THENCE S.01°05'48"E. 200.0 FT. TO THE POINT OF BEGINNING. CONTAINS 2.70 ACRES.

LOT NO. 6

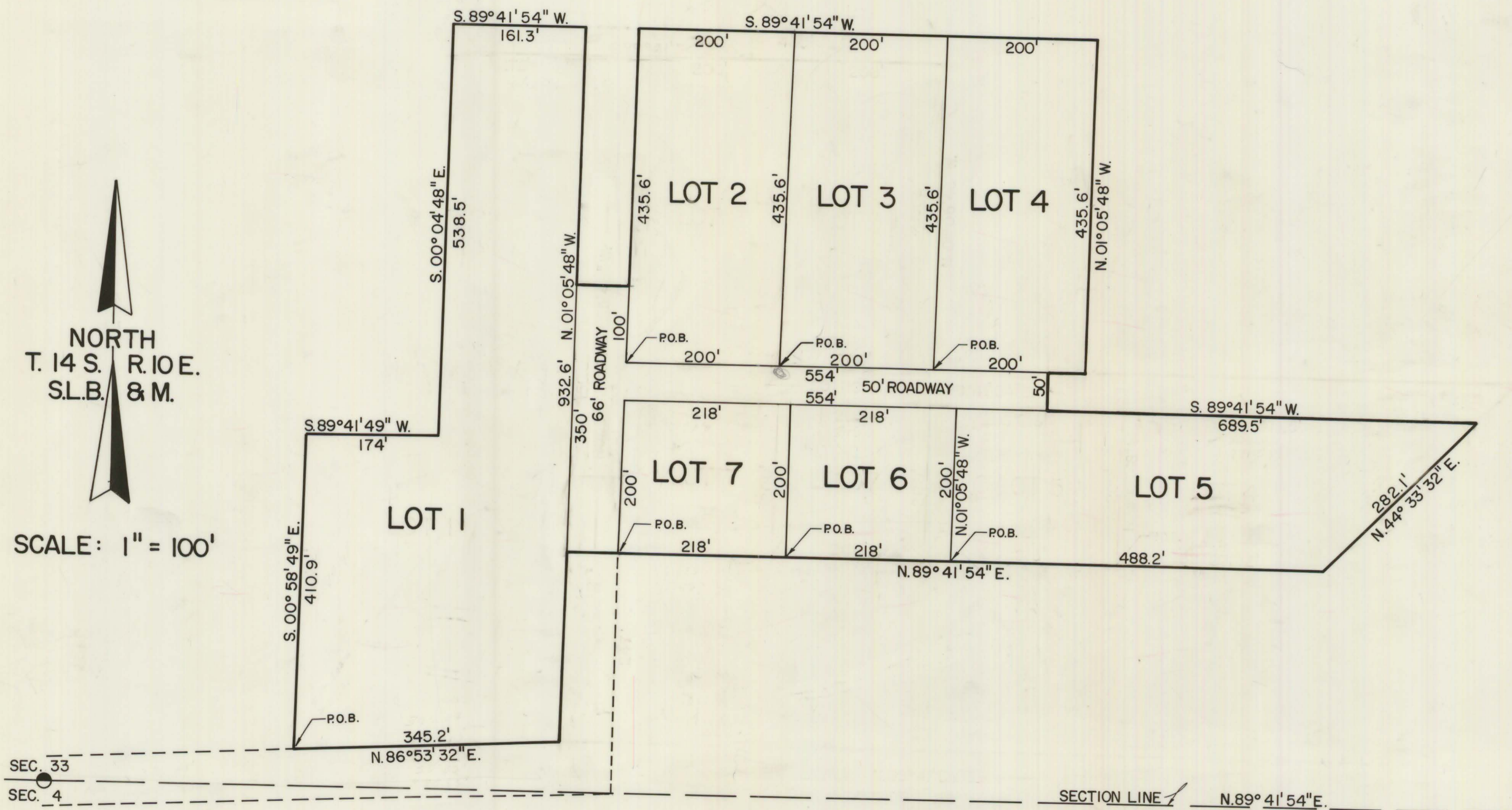
BEGINNING AT A POINT WHICH LIES 951.42 FT. EAST AND 317.97 FT. NORTH FROM THE SOUTH 1/4 CORNER OF SECTION 33, T.14S., R.10E., S.L.B. & M., AND RUNNING THENCE N.89°41'54"E. 218.0 FT.; THENCE N.01°05'48"W. 200.00 FT.; THENCE S.89°41'54"W. 218.0 FT.; THENCE S.01°05'48"E. 200.0 FT. TO THE POINT OF BEGINNING. CONTAINS 1.00 ACRES.

LOT NO. 7

BEGINNING AT A POINT WHICH LIES 733.42 FT. EAST AND 316.83 FT. NORTH FROM THE SOUTH 1/4 CORNER OF SECTION 33, T.14S., R.10E., S.L.B. & M., AND RUNNING THENCE N.89°41'54"E. 218.0 FT.; THENCE N.01°05'48"W. 200.0 FT.; THENCE S.89°41'54"W. 218.0 FT.; THENCE S.01°05'48"E. 200.0 FT. TO THE POINT OF BEGINNING. CONTAINS 1.00 ACRES.

ROADWAY DESCRIPTION

BEGINNING AT A POINT WHICH LIES 733.42 FT. EAST AND 316.83 FT. NORTH FROM THE SOUTH 1/4 CORNER OF SECTION 33, T.14S., R.10E., S.L.B. & M., AND RUNNING THENCE S.89°41'54"W. 66.0 FT.; THENCE N.01°05'48"W. 350.0 FT.; THENCE N.89°41'54"E. 66.0 FT.; THENCE S.01°05'48"E. 100.0 FT.; THENCE N.89°41'54"E. 554.0 FT.; THENCE S.01°05'48"E. 50.0 FT.; THENCE S.89°41'54"W. 554.0 FT.; THENCE S.01°05'48"E. 200.0 FT. TO THE POINT OF BEGINNING.



33-14-10
KIAHTIPES