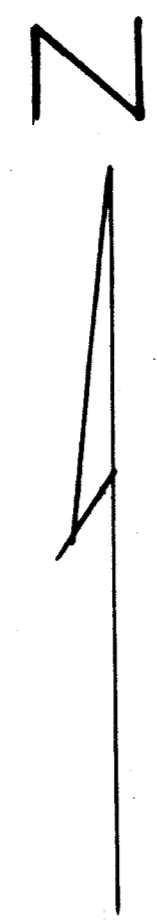
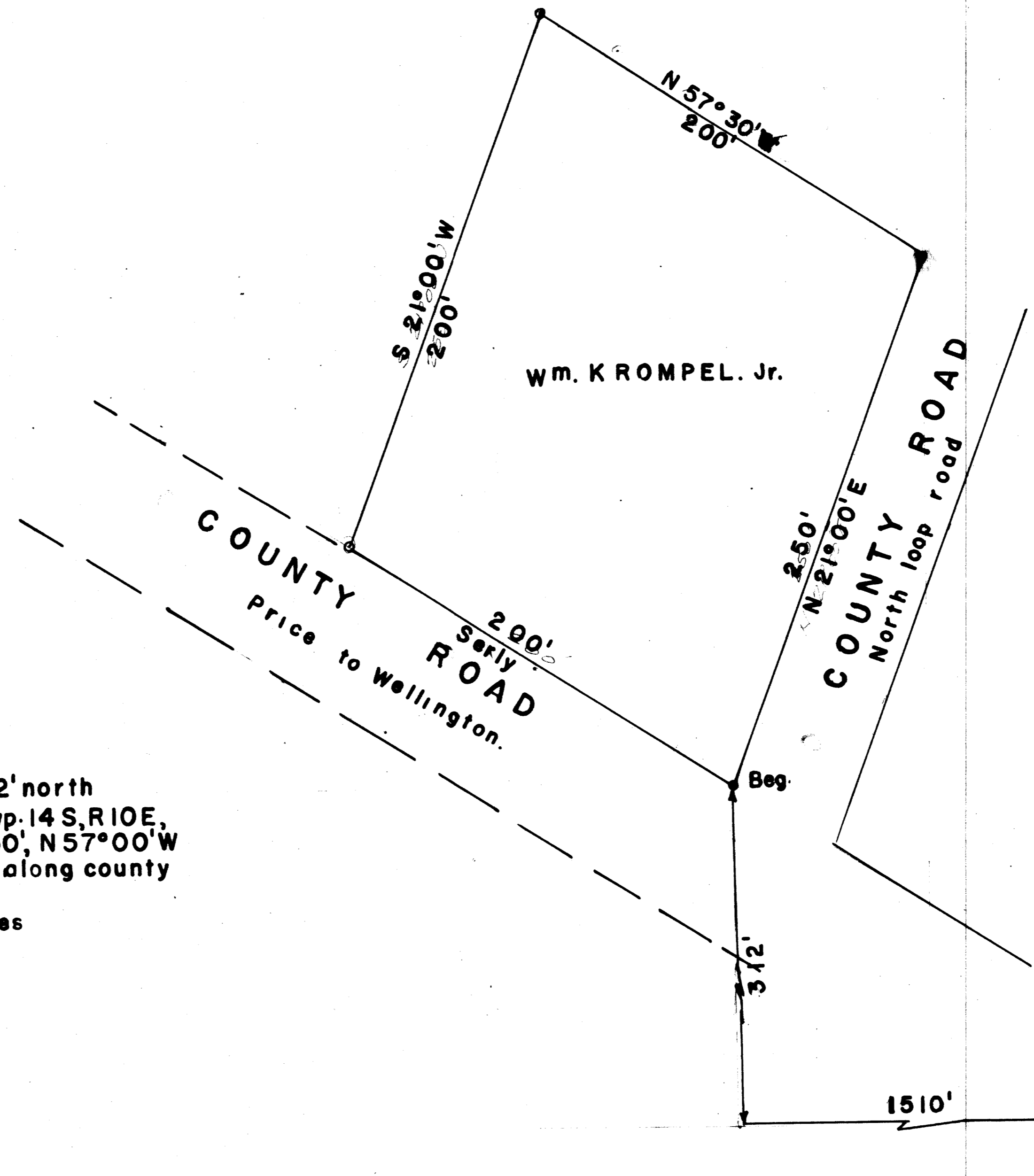


KROMPEL



Scale 1" = 40'



Description

Beg. at a point 1510' west & 312' north  
 of the E 1/4 corner Sec. 36, Twp. 14 S, R 10 E,  
 S.L.B.M. thence N 21° 00' E 250', N 57° 00' W  
 250', S 21° 00' W, Southeasterly along county  
 road 200' more or less to beg.  
 Contains: 1.15 Acres

**MINOR SUBDIVISION**  
**COUNTY PLANNING & ZONING COMMISSION APPROVAL**  
**AND ACCEPTANCE**

Presented to the Carbon County Planning & Zoning  
 Commission this 9th day of June, 1981, at which time this  
 petition for was approved & accepted, as a minor sub-  
 division.

*Harold R. Newton*  
 \_\_\_\_\_  
 Planning & Zoning Commission  
 Chairman

John Bone  
 1050  
 6/4/81

36-04-10

Wm. KROMPEL, JR.