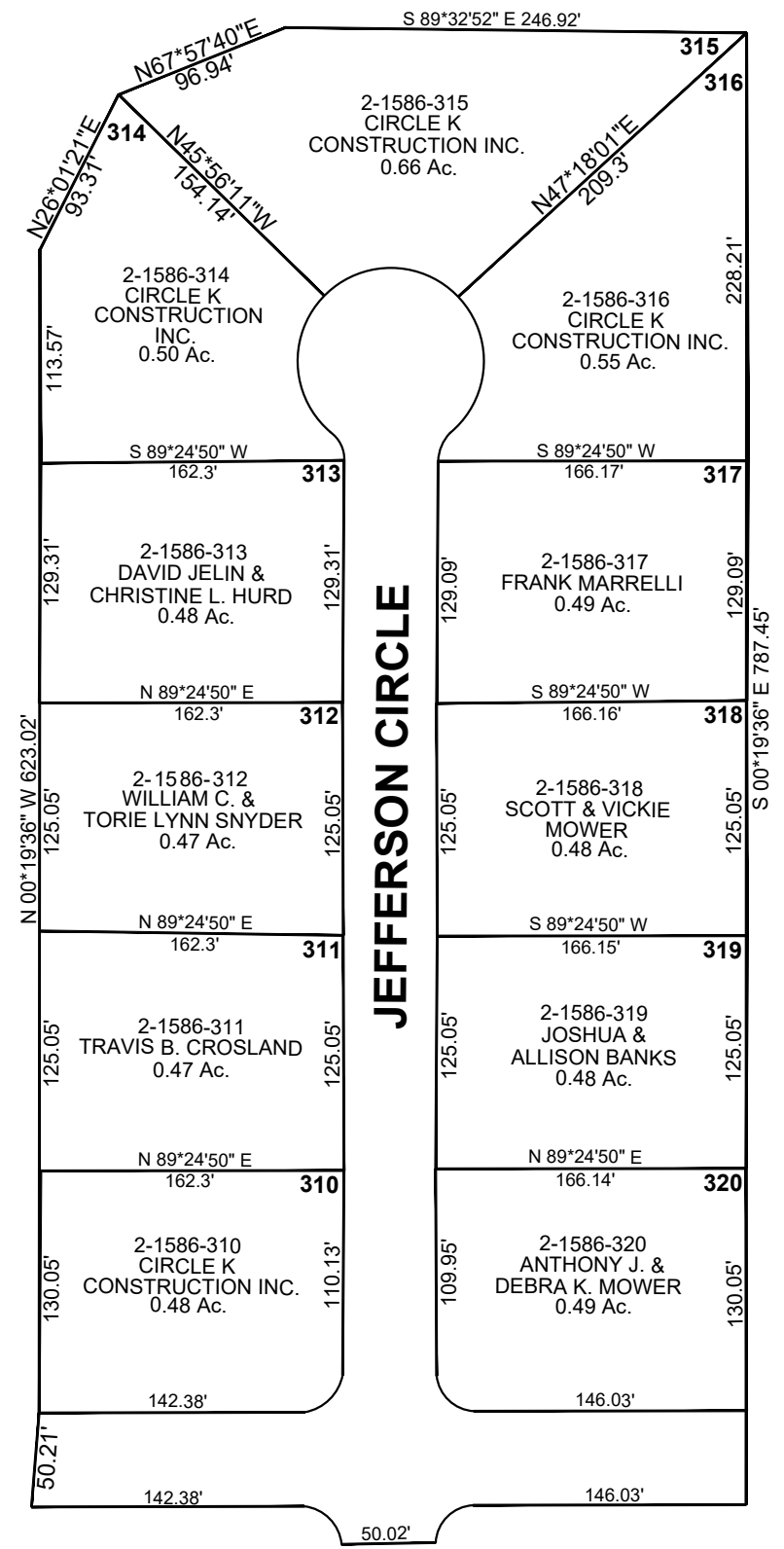


LIBERTY ESTATES  
PHASE 1

DECLARATION DRIVE



PART OF SEC 27, T14S, R10E, SLB&M

# CARBON COUNTY PLATS

LIBERTY ESTATES III

SCALE: 100 FEET = 1 INCH  
DECEMBER 6, 2018

Carbon County assumes no liability for errors or omissions in any information.