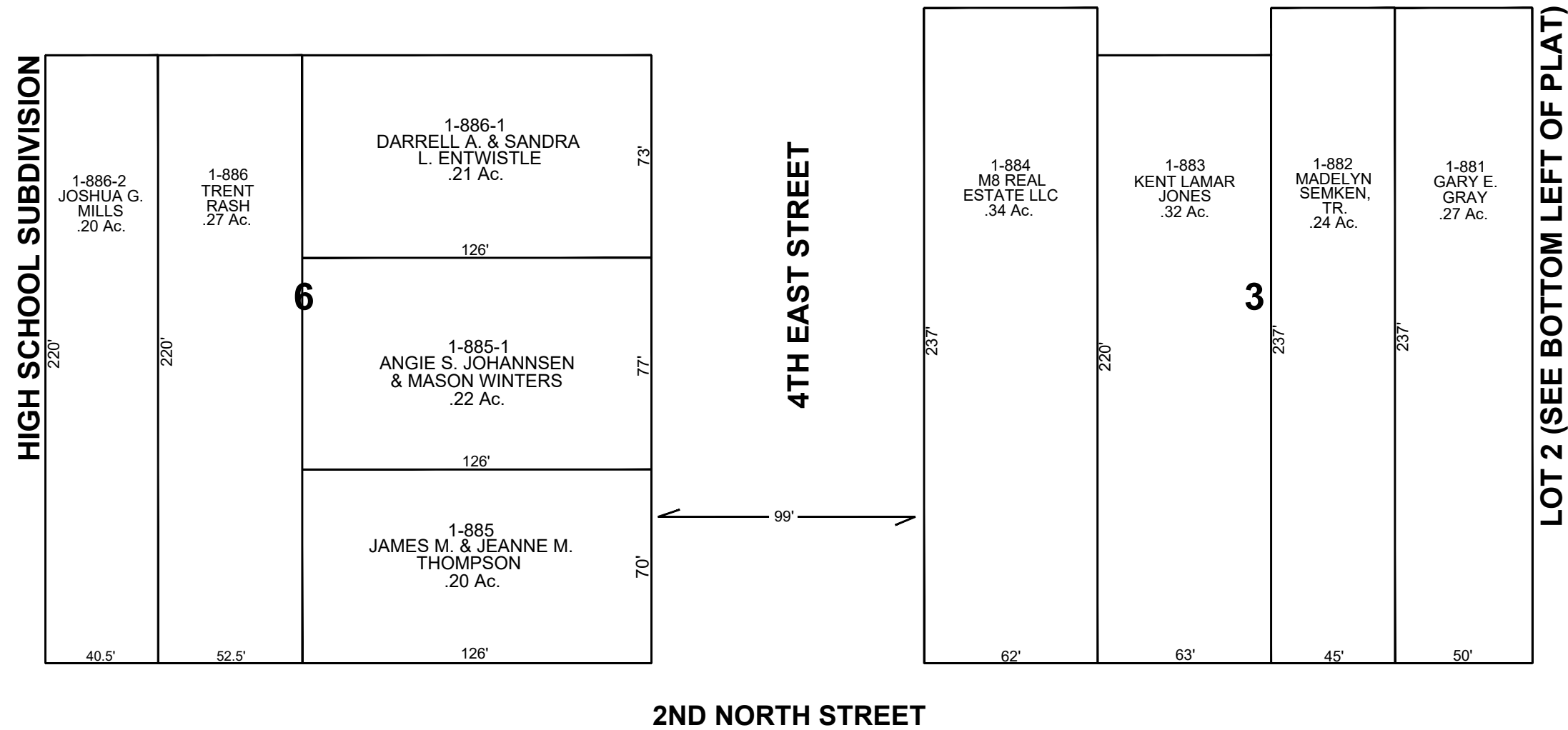


HIGH SCHOOL SUBDIVISION



PRICE CITY

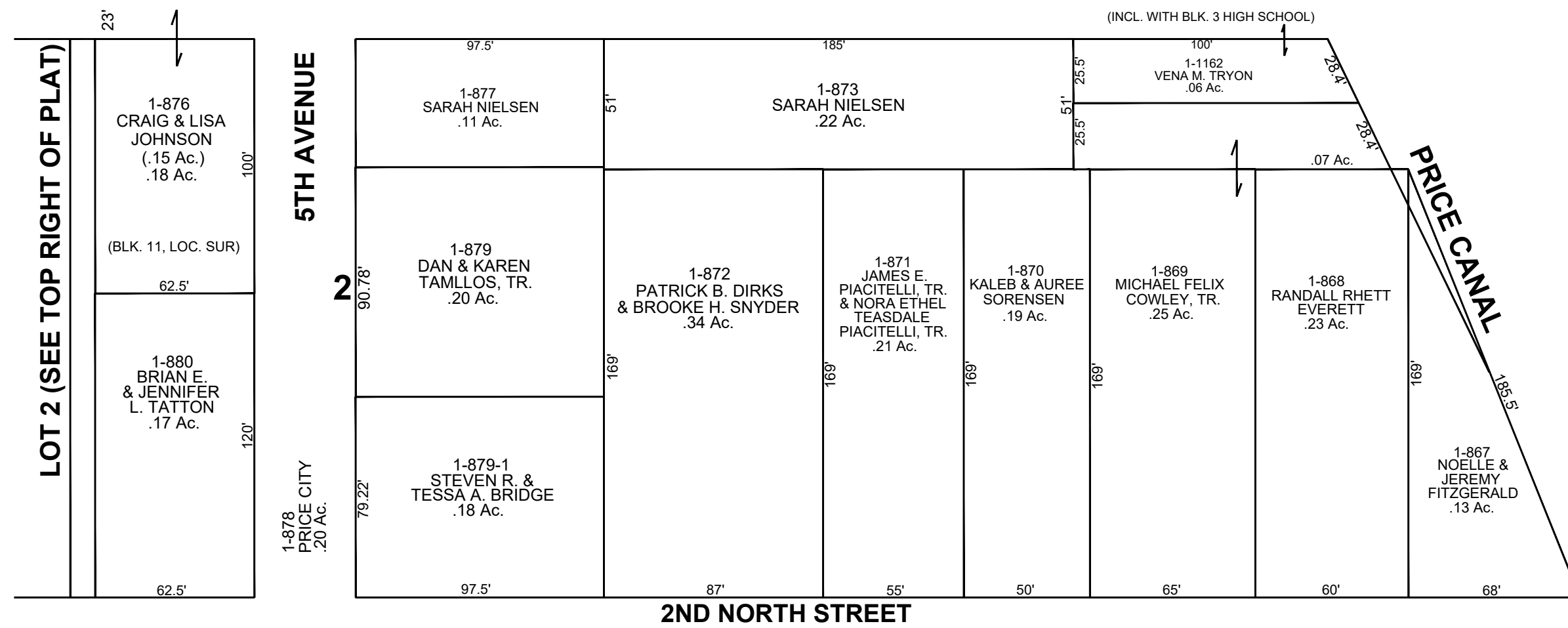
CARBON COUNTY PLATS

BLOCK 11

LOCAL SURVEY

(BLK. 4, HIGH SCHOOL)

HIGH SCHOOL SUBDIVISION



SCALE: 50 FEET = 1 INCH
APRIL 24, 2023

Carbon County assumes no liability for errors or omissions in any information.