

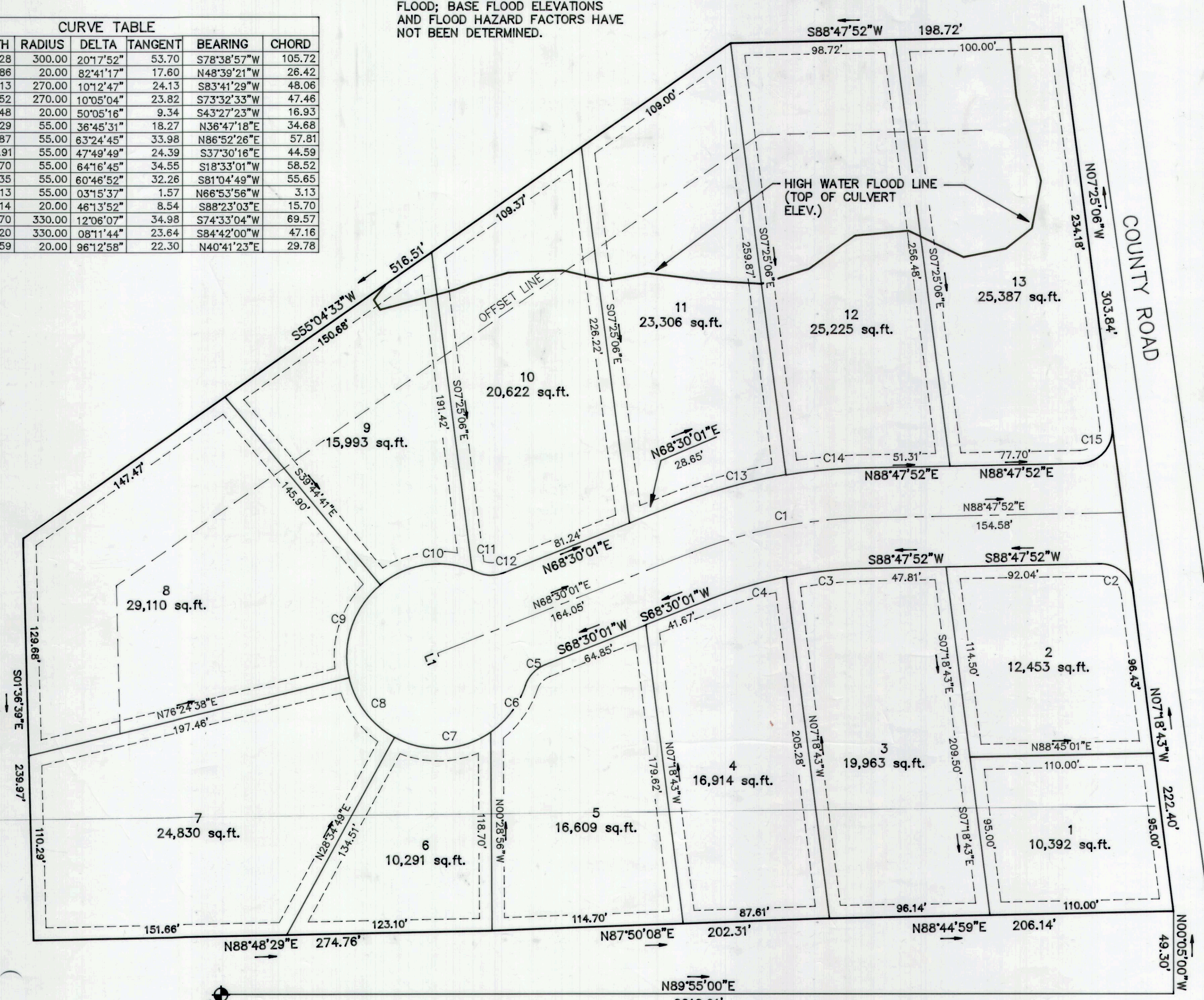
MEADOW BROOK

079731 B S P 45
 Date 18-APR-2000 4:39pm
 Fee: 43.00 Check
 SHARON MURDOCK, Recorder
 Filed By JB
 For ROBERT O TORGERSON
 CARBON COUNTY CORPORATION
 PLATS

LINE TABLE		
LINE	LENGTH	BEARING
L1	1.88	N21°29'59"W

CURVE TABLE						
CURVE	LENGTH	RADIUS	DELTA	TANGENT	BEARING	CHORD
1	106.28	300.00	201°7'52"	53.70	S78°38'57"W	105.72
2	28.86	20.00	82°41'17"	17.60	N48°39'21"W	26.42
3	48.13	270.00	101°2'47"	24.13	S83°41'29"W	48.06
4	47.52	270.00	10°05'04"	23.82	S73°32'33"W	47.46
5	17.48	20.00	50°05'16"	9.34	S43°27'23"W	16.93
6	35.29	55.00	36°45'31"	18.27	N36°47'18"E	34.68
7	60.87	55.00	63°24'45"	33.98	N86°52'26"E	57.81
8	45.91	55.00	47°49'49"	24.39	S37°30'16"E	44.59
9	61.70	55.00	64°16'45"	34.55	S18°33'01"W	58.52
10	58.35	55.00	60°46'52"	32.26	S81°04'49"W	55.65
11	3.13	55.00	031°5'37"	1.57	N66°53'56"W	3.13
12	16.14	20.00	461°3'52"	8.54	S88°23'03"E	15.70
13	69.70	330.00	12°06'07"	34.98	S74°33'04"W	69.57
14	47.20	330.00	081°1'44"	23.84	S84°42'00"W	47.16
15	33.59	20.00	96°12'58"	22.30	N40°41'23"E	29.78

NOTE: THE AREA ADJACENT TO PINNACLE WASH IS IN "ZONE A" ON THE FLOOD INSURANCE RATE MAP. WHICH IS WITHIN THE 100 YEAR FLOOD; BASE FLOOD ELEVATIONS AND FLOOD HAZARD FACTORS HAVE NOT BEEN DETERMINED.



WEST 1/4 CORNER SECTION 18 T 14 S, R 10 E S.L.B. & M.

LEGEND
 --- 7.5' UTILITY & DRAINAGE EASEMENT
 --- PROPERTY LINES
 --- SECTION CORNER

NOTE: 5/8" x 24" REBAR SET W/ CAP AT ALL LOT CORNERS OR ON THE OFFSET LINE AND LOT LINE INTERSECTION.

SURVEYOR'S CERTIFICATE

I, EVAN E. HANSEN, DO HEREBY CERTIFY THAT I AM A REGISTERED LAND SURVEYOR, AND THAT I HOLD CERTIFICATE NO. 145656, AS PRESCRIBED UNDER THE LAWS OF THE STATE OF UTAH, I FURTHER CERTIFY THAT BY AUTHORITY OF THE OWNERS, I HAVE MADE A SURVEY OF THE TRACT OF LAND SHOWN ON THIS PLAT AND DESCRIBED BELOW, AND SUBDIVIDED SAID TRACT OF LAND INTO LOTS AND STREETS, HEREAFTER TO BE KNOWN AS:

MEADOW BROOK

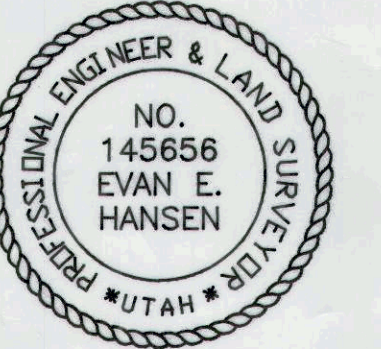
AND THAT THE SAME HAS BEEN CORRECTLY SURVEYED AND STAKED ON THE GROUND AS SHOWN ON THIS PLAT.

DESCRIPTION

A PARCEL OF LAND LOCATED IN CARBON COUNTY, STATE OF UTAH, WHICH IS IN THE SOUTHEAST QUARTER OF THE NORTHWEST QUARTER OF SECTION 18, TOWNSHIP 14 SOUTH, RANGE 10 EAST, SALT LAKE BASE AND MERIDIAN, BEING FURTHER DESCRIBED AS FOLLOWS WITH A BEARING OF NORTH 89°55'00" EAST BETWEEN THE WEST QUARTER CORNER AND THE EAST QUARTER CORNER OF SAID SECTION 18, USED AS THE BASIS OF BEARING.

BEGINNING AT A POINT WHICH IS LOCATED NORTH 89°55'00" EAST, 2612.91 FEET ALONG THE CENTER OF SECTION LINE AND NORTH 0°05'00" WEST, 49.30 FEET FROM THE WEST QUARTER CORNER OF SECTION 18, TOWNSHIP 14 SOUTH, RANGE 10 EAST, SALT LAKE BASE AND MERIDIAN; AND RUNNING THENCE NORTH 71°8'43" WEST, 222.40 FEET; THENCE NORTH 72°5'06" WEST, 303.84 FEET ALONG AN EXISTING FENCE LINE; THENCE SOUTH 88°47'52" WEST, 198.72 FEET ALONG AN EXISTING FENCE LINE; THENCE SOUTH 55°04'33" WEST, 516.51 FEET ALONG AN EXISTING FENCE LINE; THENCE SOUTH 1°36'39" EAST, 239.97 FEET ALONG AN EXISTING FENCE LINE; THENCE NORTH 88°48'29" EAST, 274.76 FEET ALONG AN EXISTING FENCE LINE; THENCE NORTH 87°50'08" EAST, 202.31 FEET ALONG AN EXISTING FENCE LINE; THENCE NORTH 88°44'59" EAST, 206.14 FEET ALONG AN EXISTING FENCE LINE TO THE POINT OF BEGINNING.

CONTAINS 6.50 ACRES, MORE OR LESS.



MARCH 1, 2000 DATE
 Evan E. Hansen
 EVAN E. HANSEN

OWNER'S DEDICATION

KNOW ALL MEN BY THESE PRESENTS THAT _____ THE _____ UNDERSIGNED OWNER() OF THE ABOVE DESCRIBED TRACT OF LAND, HAVING CAUSED SAME TO BE SUBDIVIDED INTO LOTS AND STREETS TO HEREAFTER BE KNOWN AS THE

MEADOW BROOK

DO HEREBY DEDICATE FOR PERPETUAL USE OF THE PUBLIC ALL PARCELS OF LAND SHOWN ON THIS PLAT AS INTENDED FOR PUBLIC USE.
 IN WITNESS WHEREBY THEY HAVE HERUNTO SET _____ THIS 18TH DAY OF APRIL A.D. 2000.

Robert O. Torgerson, Jr.
Faye M. Torgerson, Jr.

ACKNOWLEDGMENT

STATE OF UTAH
 County of CARBON S.S.
 ON THE 18TH DAY OF APRIL A.D. 2000, PERSONALLY APPEARED BEFORE ME, THE UNDERSIGNED NOTARY PUBLIC, IN AND FOR SAID COUNTY OF CARBON IN SAID STATE OF UTAH, THE SIGNER(S) OF THE ABOVE OWNER'S DEDICATION, THREE IN NUMBER, WHO DULY ACKNOWLEDGED TO ME THAT THEY SIGNED IT FREELY AND VOLUNTARILY AND FOR THE USES AND PURPOSES THEREIN MENTIONED.

MY COMMISSION EXPIRES 12/31/2000
 Notary Public
 RESIDING IN CARBON

SE1/4 NW1/4 SEC. 18, T 14 S, R 10 E, S.L.B. & M.

C:\EMPIRE\1999\SUBDIVISION\TORGERSON14.dwg 02/26/00 12:31 win

<p>P.R.W.I.D. APPROVED THIS <u>9TH</u> DAY OF <u>April</u> A.D. 2000 BY THE COUNTY PLANNING COMMISSION.</p>	<p>PLANNING COMMISSION APPROVED THIS <u>12TH</u> DAY OF <u>April</u> A.D. 2000 BY THE COUNTY PLANNING COMMISSION.</p>	<p>SOUTHEASTERN UTAH DISTRICT HEALTH DEPARTMENT APPROVED THIS <u>22</u> DAY OF <u>March</u> A.D. 2000. <u>Glenn B. Bjork</u> DIRECTOR, ENVIRONMENTAL HEALTH</p>	<p>SURVEYOR'S CERTIFICATE I, HEREBY CERTIFY THAT THIS OFFICE HAS EXAMINED THIS PLAT AND IT IS CORRECT IN ACCORDANCE WITH INFORMATION ON FILE IN THIS OFFICE. DATE <u>3-19-2000</u> <u>Nick Hansen</u> COUNTY SURVEYOR</p>	<p>APPROVAL AS TO FORM APPROVED THIS <u>21ST</u> DAY OF <u>March</u> A.D. 2000. <u>Gene Stride</u> COUNTY ATTORNEY</p>	<p>COUNTY COMMISSION PRESENTED TO THE BOARD OF COUNTY COMMISSIONERS THIS <u>13TH</u> DAY OF <u>April</u> A.D. 2000, AT WHICH TIME THIS SUBDIVISION WAS APPROVED AND ACCEPTED. ATTEST: COUNTY CLERK <u>Sharon Murdock</u> CHAIRMAN, BOARD OF COUNTY COMMISSIONERS <u>Michael J. Mink</u></p>	<p>RECORDED #079731 STATE OF UTAH, COUNTY OF <u>Carbon</u> RECORDED AND FILED AT THE REQUEST OF <u>Robert O. Torgerson</u> DATE <u>4-18-00</u> TIME <u>4:39 AM</u> BOOK <u>5</u> PAGE <u>45</u> <u>Sharon Murdock</u> COUNTY RECORDER</p>
------------------------------------------------------------------------------------------------------------------------------------------------------------------	----------------------------------------------------------------------------------------------------------------------------------------------------------------------------	----------------------------------------------------------------------------------------------------------------------------------------------------------------------------------------------------------------	-----------------------------------------------------------------------------------------------------------------------------------------------------------------------------------------------------------------------------------------------------------------------------------------------	----------------------------------------------------------------------------------------------------------------------------------------------------------------------------------	--------------------------------------------------------------------------------------------------------------------------------------------------------------------------------------------------------------------------------------------------------------------------------------------------------------------------------------------------	------------------------------------------------------------------------------------------------------------------------------------------------------------------------------------------------------------------------------------------------------------------------------------------------------------------------------------