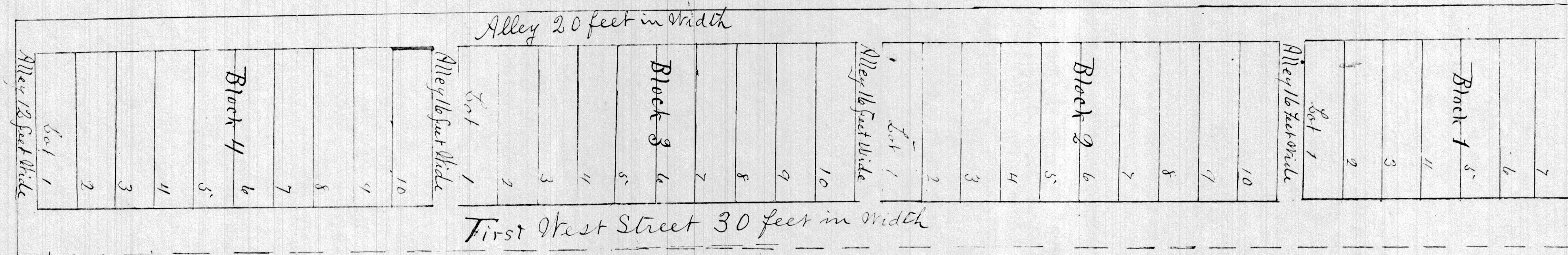


Meads Survey of Welby Townsite

Stone
N.E. cor of Sect 24
T. 5. 13. S. R. 3. E.



Orlando F. Mead and Sylvia A. Mead owners of the lands described in the annexed certificate of George Fox surveyor hereby certify and declare that they are sold units of said lands that add lots herein described and numbered one to 5 feet in width and that the street and the alley therein described are intended for public highways and are hereby dedicated and abandoned to the use of said highways and that the units set over herein are genuine units of said survey. This second day of November 1891

W. Lombard, J. Mead
Sylvia A. Mead

Receipt of Mead
Census of Emery 20

On this 2nd day of November 1891 persons named appeared before me Orlando F. Mead and Sylvia A. Mead the signers of the above certificate and declared to me that they had executed the same

W. Baeinger
Notary Public

Approved November 7, 1891

Walter L. Johnson
Notary Public of Emery County

Carl Wilbur
Clerk of the Board of Supervisors

Filed for Record and recorded November 10th 1891
Carl Wilbur
County Recorder of Emery Co.

I, George Fox, surveyor of Emery Co. Utah hereby certify that the above plat forms a true and correct copy of the original plat on file in my office of the N.E. cor. of Sec. 24, Township 5 S., Range 9 E., T. 5. 13. S. R. 3. E., and that the same contains 135.4 acres more or less, and that the same is a true and correct copy of the same as recorded in my office and that the same is correct.

George Fox Surveyor
of Emery Co. Utah

Recorded in Book F
of Emery Co. Page 24
Carl Wilbur
County Recorder

South