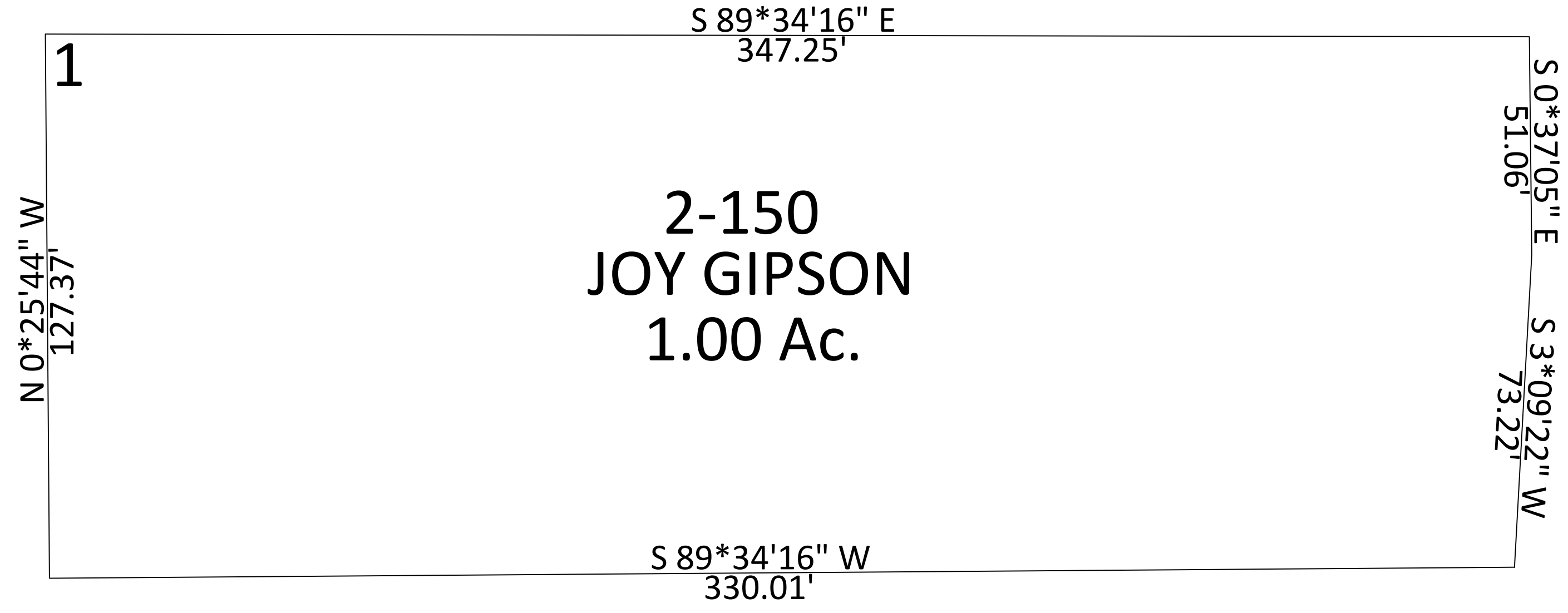


MIKE & JOY GIPSON SUBDIVISION
PART OF SECTION 24, T13S, R9E

CARBON COUNTY PLATS

MIKE & JOY GIPSON SUBDIVISION



SCALE: 25 FEET = 1 INCH
DECEMBER 16, 2022

Carbon County assumes no liability for errors or omissions in any information.