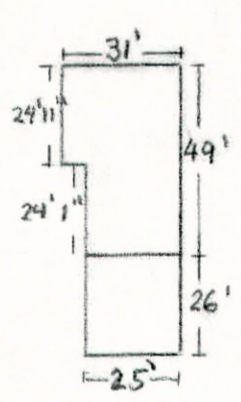
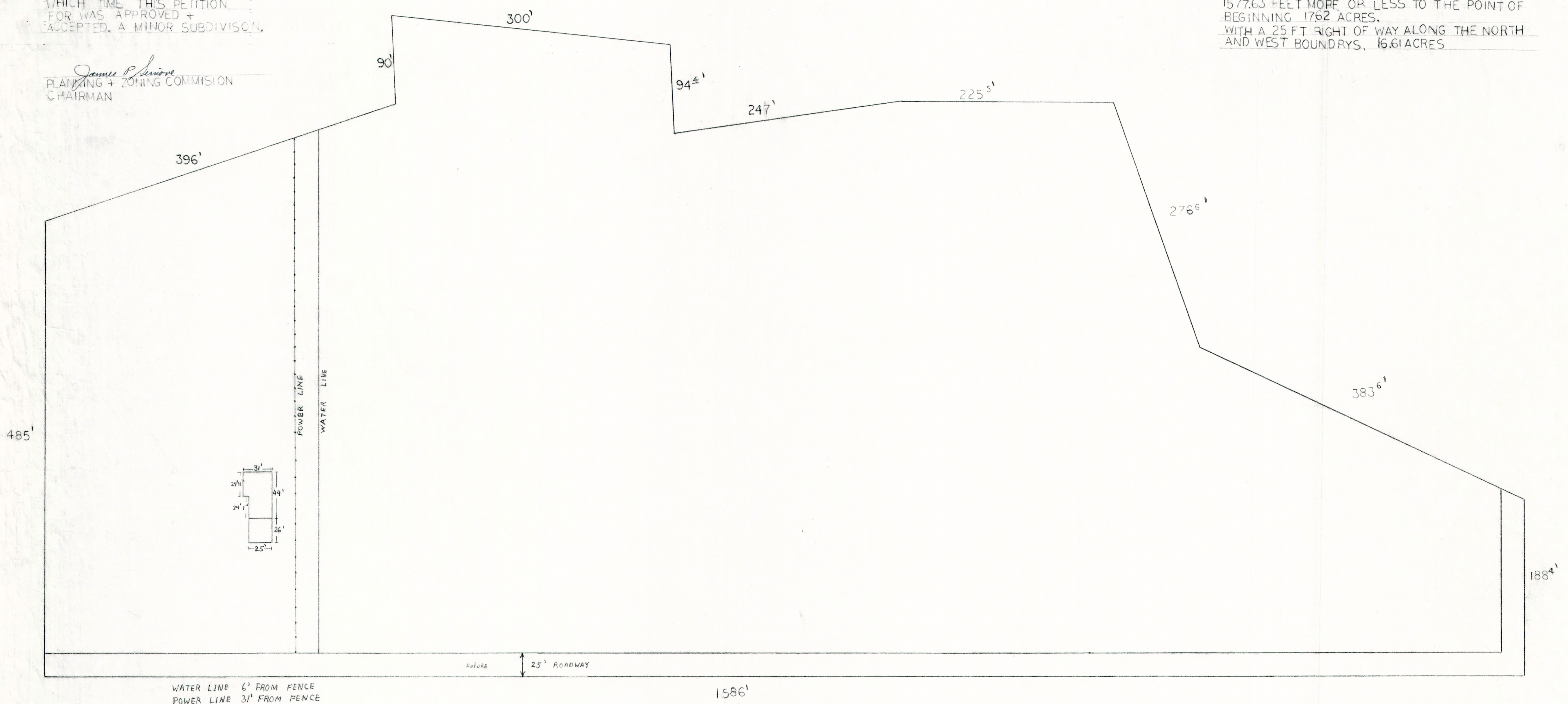


MINOR SUBDIVISION
 PRESENTED TO THE CARBON
 COUNTY PLANNING + ZONING
 COMMISSION THIS 13th
 DAY OF NOVEMBER 1979 AT
 WHICH TIME THIS PETITION
 FOR WAS APPROVED +
 ACCEPTED. A MINOR SUBDIVISION.

James P. Levine
 PLANNING + ZONING COMMISSION
 CHAIRMAN

BEGINNING AT A POINT EAST 1332.33 FEET, FROM
 THE NORTHWEST CORNER OF SECTION 29, T.14 S,
 R. 1E, S. 1B + M. THENCE S-00-29-30W 188.40 FEET
 S-65-02-30-E, 383.66 FEET S-19-27-30E, 276.56
 FEET, N-89-39-00-E 255.50 FEET, N-80-24-00-E
 338.25 FEET N-80-12-00-E 91.25 FEET, N-77-42-00-E
 208.75 FEET S-03-21-00-E 96.28 FEET, N-67-27-00-E
 304.65 FEET, N-00-41-45-E 482.65 FEET WEST
 1577.63 FEET MORE OR LESS TO THE POINT OF
 BEGINNING 1762 ACRES.
 WITH A 25 FT RIGHT OF WAY ALONG THE NORTH
 AND WEST BOUNDRIES, 16.61 ACRES



WATER LINE 6' FROM FENCE
 POWER LINE 31' FROM FENCE

HOR. 1" = 50'
 VER. 1" = 50'

DATE		APPROVED BY		DR
				RE

27-14-10

MILKOVICH