

STATE OF UTAH
 COUNTY OF GARFIELD
 R. FORRESTER
 MAR 16 10 46 AM '00
 IN BOOK 3-A PLATS
 PAGE 124
 MRS. SAMUEL COUNTY RECORDER

Entry No. 71276
 Indexed
 Abstracted
 Rec. Fee

NORTH
 TRUE



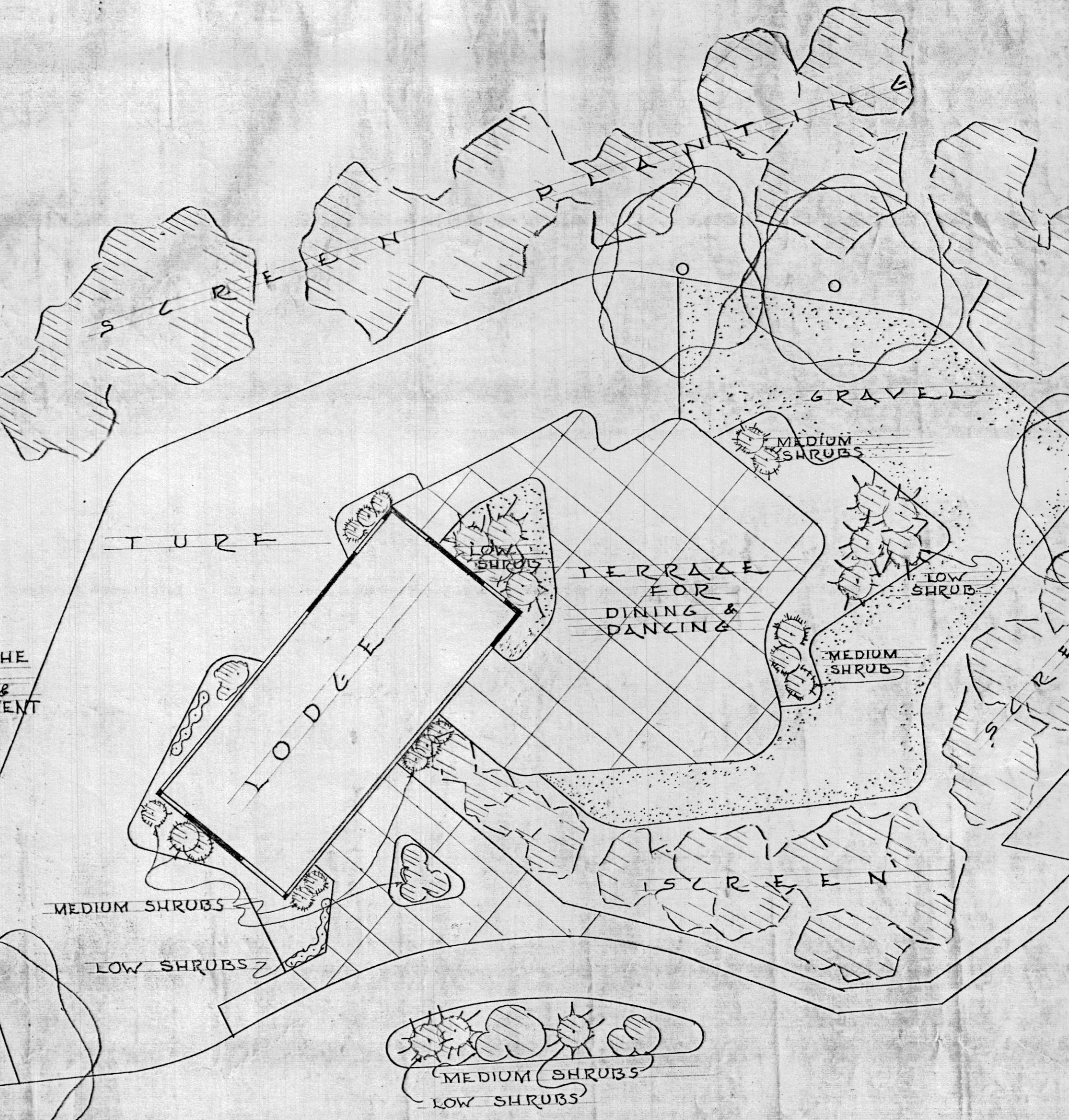
GENERAL LEGEND

ITEM	SYMBOL
BUILDINGS (PROP)	[Symbol: rectangle with internal lines]
INTERMITTENT WATER	[Symbol: wavy line]
LOT CORNERS (PROP)	[Symbol: small square]
ROADS (PROP)	[Symbol: double line]
TURE-A-ROUND (PROP)	[Symbol: circle with arrow]
ASPEN	[Symbol: cloud-like shape]

NOTE: LODGE
 THE LODGE WILL CONTAIN THE FOLLOWING: A KITCHEN, A DINING & DANCING AREA & REST ROOM IN THE BASEMENT

LOT SIZE AVERAGES 1/4 ACRE PER LOT.

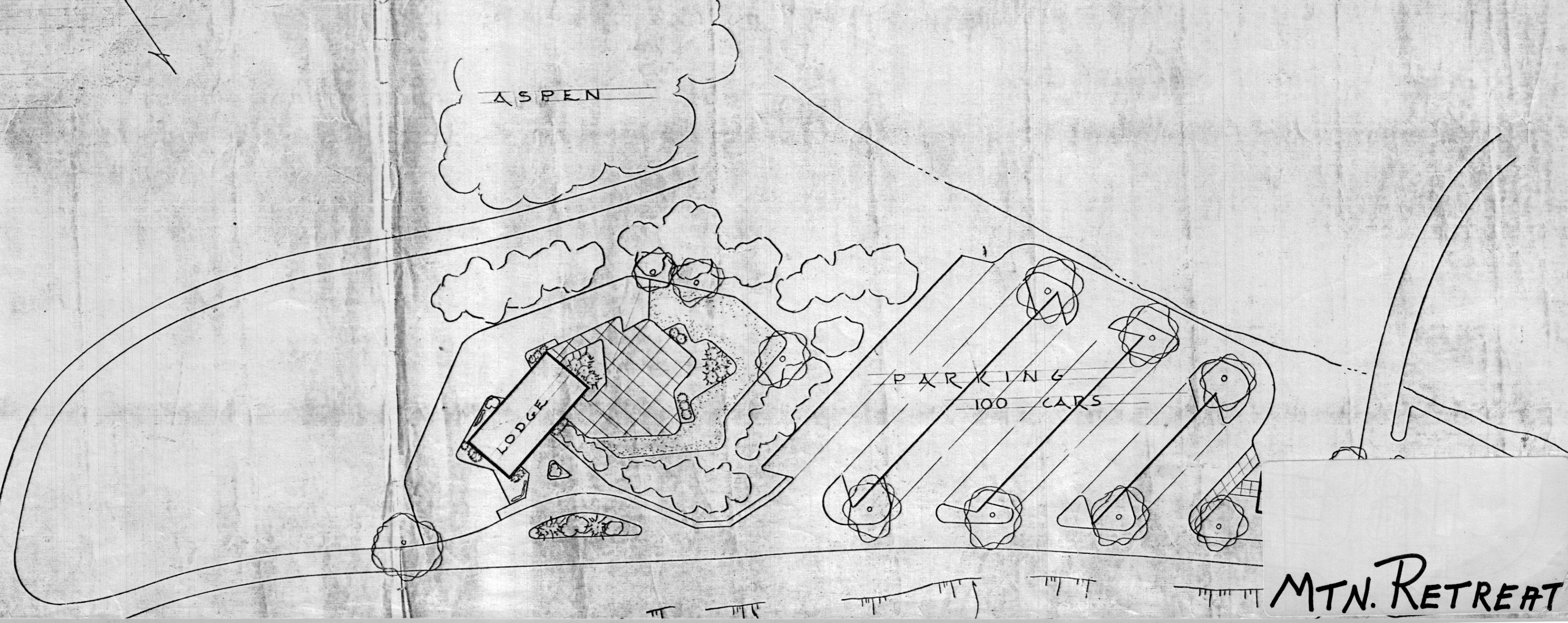
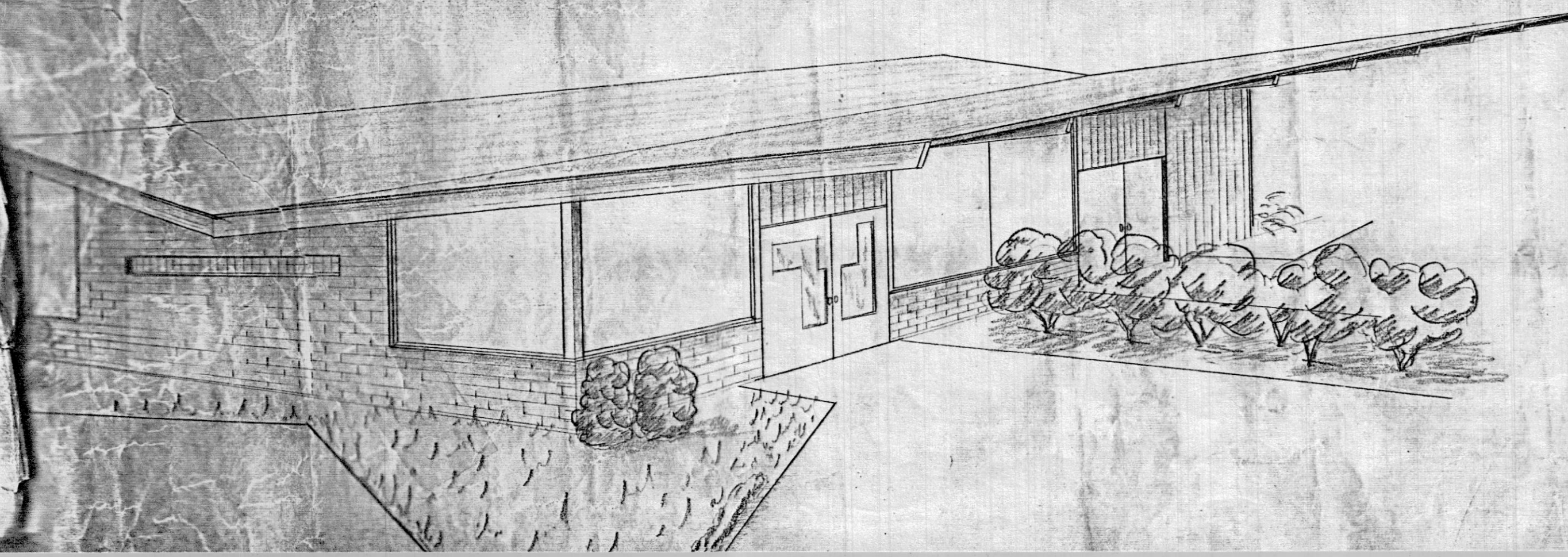
NOTE:
 APPROXIMATE LOCATION OF WELL AND PUMP WATER TO BE PUMPED TO TOP OF MOUNTAIN BUT WITHIN EAST PROPERTY LINE.



LODGE AREA
 SCALE 1" = 20'

APPROXIMATE LOCATION OF SE2 CORNER COMMON TO SEC. 33 & 34, T.12 S., R.7 E., S.12 E. 1/4 OF SECTION 3, T.12 S., R.7 E., S.12 E. 1/4 IN UTAH CONTAINING 39.92 AC.

GENERAL LAY-OUT PLAN
 SUMMER HOME LOTS & RESORT



MTN. RETREAT