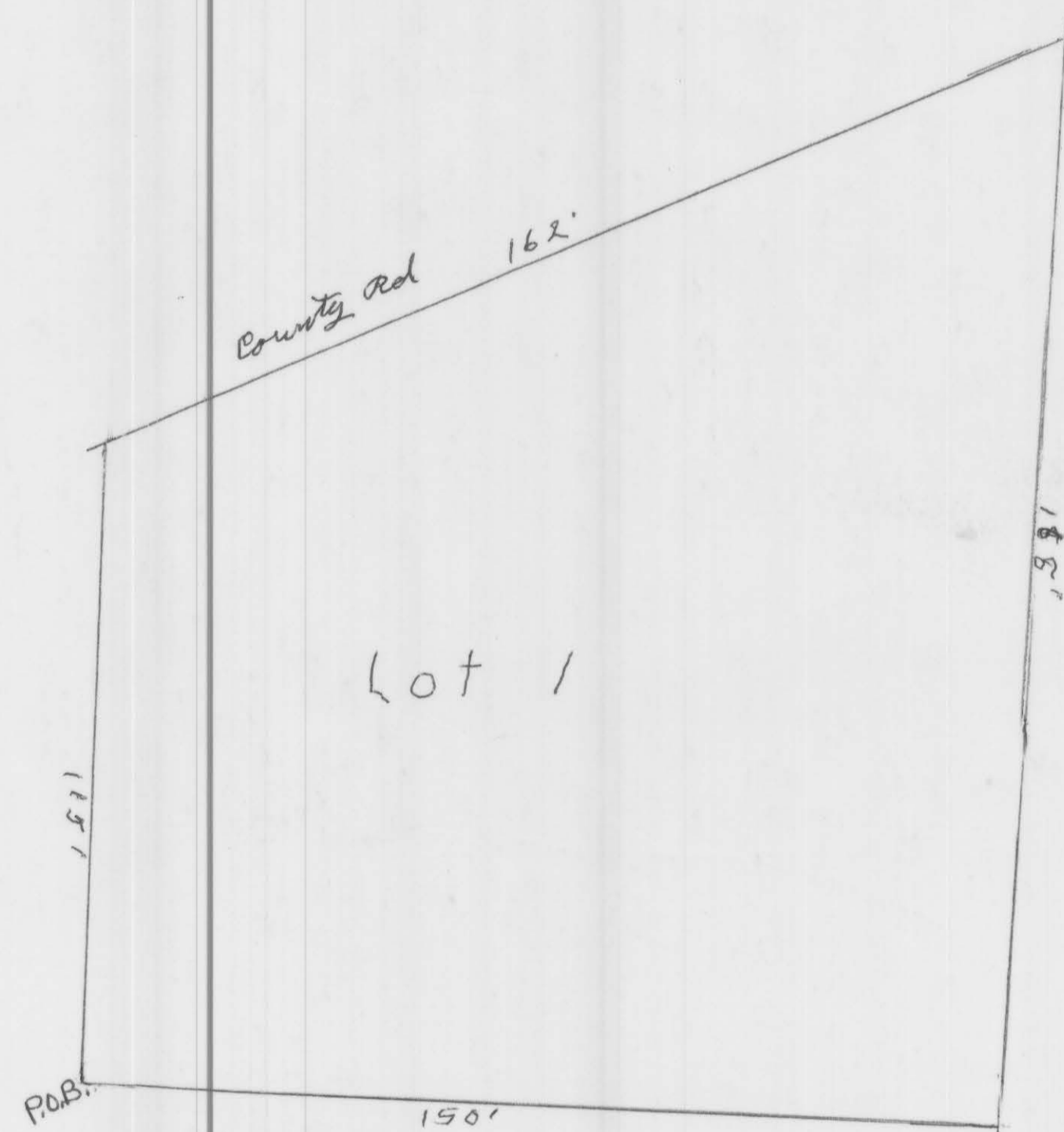


William D. Murphy

Minor Subdivision



SCALE  
1 inch to 25 feet

LOT 1

Beginning 245 feet North from the Southwest corner of section 25, T14S, R10E, SLB&M, and running th North 115 feet; th Northeast 162 feet along the South boundary of the county road Right-of-way; th South 188 feet; th West 150 feet to the place of beginning.

COUNTY PLANNING & ZONING COMMISSION  
APPROVAL & ACCEPTANCE

Presented to the Carbon County Planning & Zoning Commission this 9 day of OCT, 1979 at which time this petition for Minor Subdivision was approved and accepted.

*Leon Thayer*  
Planning & Zoning Commission Chairman

	SCALE	DR/
		REV
DATE	APPROVED BY	DR/

25-14-10

WM. MURPHY