

OLSEN RESERVOIR SUBDIVISION

A SUBDIVISION OF A PART OF SECTION 9, T-14-S, R-10-E,
S.L.M.

PRICE CITY, CARBON COUNTY, UTAH

Entry No. 164670
 Indexed
 Abstracted
 Recd. Fee. ---
 STATE OF UTAH
 COUNTY OF CARBON
 PRICE CITY
 AUG 19 10 19 AM '82
 BOOK 4 OF PLATS
 PAGE 236
 ANN O'BRIEN
 COUNTY RECORDER

ACKNOWLEDGEMENT

STATE OF UTAH
 COUNTY OF CARBON

On this 18th day of August, 1982, personally appeared before me, P HAMPTON McARTHUR, who after being duly sworn, did say that ART LEE MARTINES WAS AUTHORIZED TO and signed the Owner's Dedication in behalf of said CORPORATION by authority of a resolution from its Executive Committee dated 11 August 1982, acknowledged that he executed the same.

Art Lee Martines
 Notary Public
 Price, Carbon, Utah
 Residence
 07-19-85
 Commission Expires

CITY ENGINEER

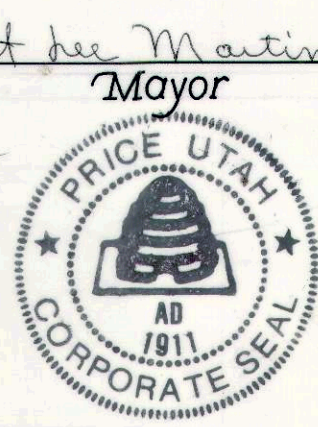
Approved this 13th day of August, 1982.

D. Weckhoff
 Price City Engineer

CITY COUNCIL

Presented to the City Council of Price, Utah, this 11th day of August, 1982, at which time this Subdivision was approved and accepted.

Attest: *Art Lee Martines*
 Mayor
 City Recorder



CITY ATTORNEY

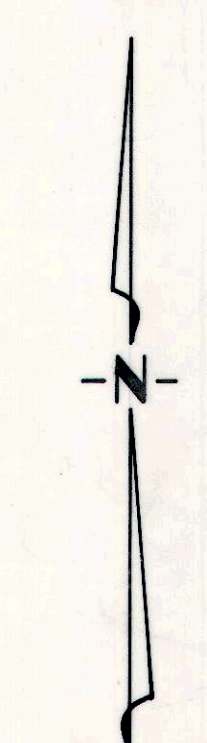
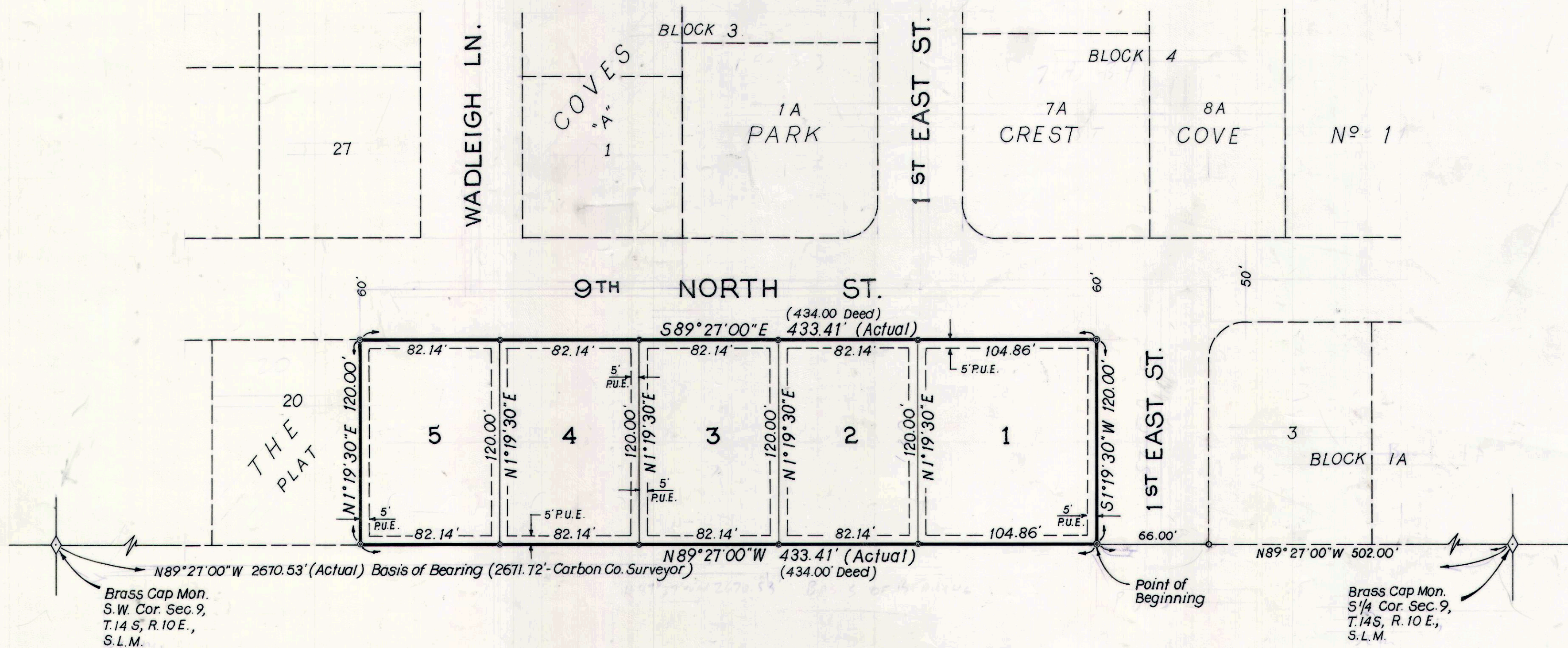
I have examined the proposed plat of OLSEN RESERVOIR SUB, and in my opinion, it conforms with the City's Ordinances applicable thereto and now in force and effect.

Ray Chubb
 City Attorney
 8-18-82
 Date

PLANNING COMMISSION

Approved this 2nd day of August, 1982 by the Price City Planning Commission.

Ray Chubb
 Chairman



Scale: 1" = 50'

- NOTES: 1. 5' P.U.E. INDICATES 5' PUBLIC UTILITY EASEMENT LOCATED 5' INSIDE EACH PROPERTY LINE.
 2. • INDICATES IRON ROD SET AT ALL LOT CORNERS.

OWNER'S DEDICATION

Know all by these presents that we, the undersigned Owners of the described tract of land below, having caused the same to be subdivided into lots and streets to hereafter be known as OLSEN RESERVOIR SUBDIVISION, do hereby dedicate for perpetual use of the public, all parcels of land shown on this plat as intended for public use, and do warrant, defend and save the City harmless against any easements or other incumbrances on the dedicated streets which will interfere with the City's use, operation and maintenance of the streets, and do further dedicate the easements as shown.

In witness whereof, we have hereunto set our hands this 11th day of August, 1982.

PRICE MUNICIPAL CORPORATION

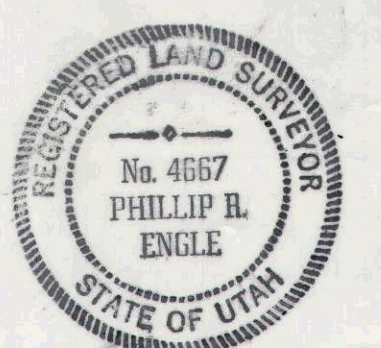
Art Lee Martines
 Art Lee Martines - Mayor
P Hampton McArthur
 P Hampton McArthur - City Recorder



SURVEYOR'S CERTIFICATE

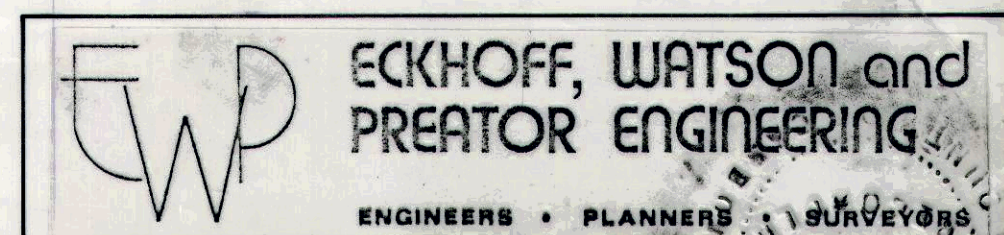
I, Phillip R. Engle, a licenced land surveyor, holding Certificate No. 4667, as prescribed by the State of Utah, do hereby certify that by authority of owners, I have supervised a survey of the tract of land shown on this plat and described herewith, and have subdivided said tract of land into lots and streets to be known as OLSEN RESERVOIR SUBDIVISION, and that the same has been surveyed and staked on the ground as shown on this plat. Signed on this 30 day of JULY, 1982.

Phillip R. Engle
 Phillip R. Engle



BOUNDARY DESCRIPTION

Beginning at a point on the South Line of Section 9, T. 14 S., R. 10 E., S.L.M., said point being N 89° 27' 00" W 502.00 ft. from the S 1/4 corner of said Section 9; Thence along said Section Line 433.41 ft. to the East Line of Lot 20, The Coves, Plat "A" Subdivision; Thence N 0° 19' 30" E 120.00 ft. along said East Line to the South R/W Line of 9th North St.; Thence S 89° 27' 00" E 433.41 ft. along said R/W to the West R/W Line of 1st East St.; Thence S 0° 19' 30" W 120.00 ft. along said R/W Line to the Point of Beginning. Contains 1.19 Acres more or less.



RECORDED NO. 164670
 STATE OF UTAH, COUNTY OF CARBON
 RECORDED AND FILED AT THE REQUEST OF
 PRICE MUNICIPAL CORPORATION
 DATE: 8/19/82 TIME: 10:19 AM BOOK: 4 Plats PAGE: 236
 FEE: .00
 ANN O'BRIEN
 CARBON COUNTY RECORDER