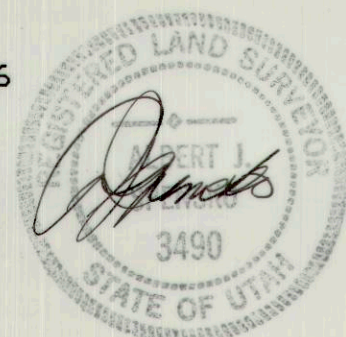


# SURVEYOR'S CERTIFICATE

I, ALBERT J. SPENSKO, DULY REGISTERED AND LICENSED TO PRACTICE LAND SURVEYING AS PRESCRIBED BY THE LAWS OF THE STATE OF UTAH AND THAT I HOLD LICENSE NO. 146652, DO HEREBY CERTIFY THAT I HAVE SURVEYED LOT 2 AND SUBDIVIDED IT INTO LOTS 2 AND 2A AS SHOWN ON THIS PLAT.

*Albert J. Spensko*  
 ALBERT J. SPENSKO  
 12 SO. 5TH AVE.  
 HELPER, UTAH 84526  
 DATE 11/21/97

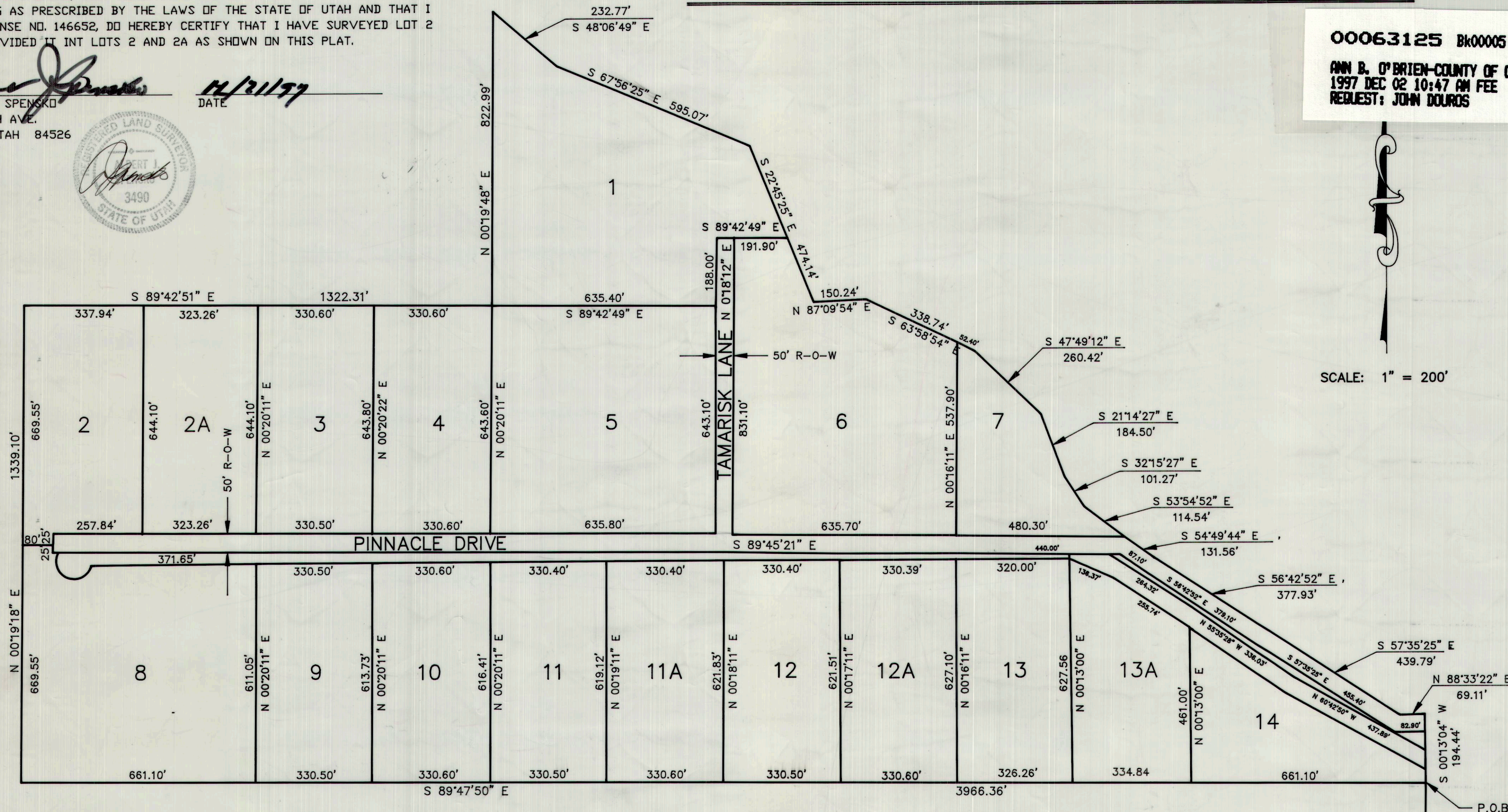


## PINNACLE PEAK SUBDIVISION AMENDED PLAT I

00063125 BK00005 Pg00027-00027

ANN B. O'BRIEN-COUNTY OF CARBON  
 1997 DEC 02 10:47 AM FEE \$34.00 BY  
 REQUEST: JOHN DOURS

SCALE: 1" = 200'



### LOT OWNERS APPROVAL

WE, THE LOT OWNERS OF LAND WITHIN 300 FEET OF THE CHANGE IN LOT 13 TO LOTS 13 AND 13A TO HEREBY APPROVE.

*Herman F. Vian*  
*Madeleine X. Merrier*  
*John Merrier*  
*James R. Connolly*  
*Teresa L. Vian*  
*Brenda E. Hansen*  
*Bruce Hansen*

### LOT OWNERS APPROVAL

WE, THE LOT OWNERS OF LAND WITHIN 300 FEET OF THE CHANGE IN LOT 2 TO LOTS 2 AND 2A TO HEREBY APPROVE.

*Leahy V. Hines*  
*Mr. E. Ross (Indygo)*  
*Alan J. Strakey*  
*Cathy Giner*  
*Andre Strakey*

### NOTES

- 1- SEE BOOK 303, PAGES 221 THRU 229 AND BOOK 305, PAGE 31 IN THE CARBON COUNTY RECORDERS OFFICE FOR DEEDS CONVEYING LAND TO CARBON COUNTY FOR ROAD PURPOSES ALONG THE SOUTH SIDE OF PINNACLE DRIVE.
- 2- BASIS OF BEARING IS NORTH 0°13'04" EAST BETWEEN THE SOUTHEAST CORNER OF SECTION 30 AND THE EAST QUARTER CORNER OF SECTION 30, TOWNSHIP 14 SOUTH, RANGE 10 EAST, SALT LAKE BASE AND MERIDIAN AS ESTABLISHED BY THE CARBON COUNTY SURVEYORS OFFICE AND IS THE UTAH STATE PLANE COORDINATE SYSTEM. THEREFORE ALL BEARINGS ON THIS PLAT HAVE BEEN ROTATED 0°03'11" CLOCKWISE FROM THE BEARINGS RECORDED ON THE AMENDED PLAT PINNACLE PEAK CONDOMINIUMS.
- 3- SEE AMENDED PLAT PINNACLE PEAK CONDOMINIUMS FOR ORIGINAL SURVEYORS CERTIFICATE AND DESCRIPTION AS RECORDED IN BOOK 4 OF PLATS PAGE 220 IN THE CARBON COUNTY RECORDERS OFFICE.
- 4- ALL LOTS ARE SUBJECT TO ALL EXISTING EASEMENTS HOWEVER EVIDENCED.

### LEGEND

PROPERTY LINES  
 SECTION CORNER  
 INDICATES CHANGE OF BEARING  
 OF PROPERTY LINES.

## SURVEYOR'S CERTIFICATE

I, EVAN E. HANSEN, DO HEREBY CERTIFY THAT I AM A REGISTERED LAND SURVEYOR, AND THAT I HOLD CERTIFICATE NO. 145656, AS PRESCRIBED UNDER THE LAWS OF THE STATE OF UTAH, I FURTHER CERTIFY THAT BY AUTHORITY OF THE OWNERS, I HAVE SUBDIVIDED LOT 13 INTO LOTS 13 AND 13A AS SHOWN ON THIS PLAT.

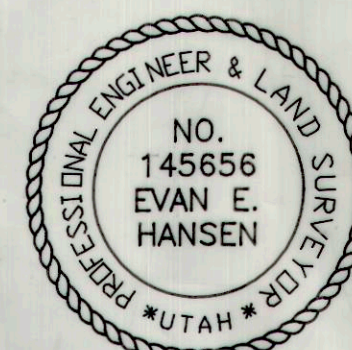
## PINNACLE PEAK SUBDIVISION AMENDED PLAT I

### DESCRIPTION

BEGINNING AT A POINT 1333.34 FEET, NORTH 0°13'04" EAST OF THE SOUTH EAST CORNER OF SECTION 30, TOWNSHIP 14 SOUTH, RANGE 10 EAST, SALT LAKE BASE AND MERIDIAN; AND RUNNING THENCE NORTH 89°47'50" WEST, 3966.36 FEET; THENCE NORTH 0°19'18" EAST, 1339.10 FEET; THENCE SOUTH 89°42'51" EAST, 1322.31 FEET; THENCE NORTH 0°19'48" EAST, 822.99 FEET; THENCE SOUTH 48°06'49" EAST, 232.77 FEET; THENCE SOUTH 67°56'25" EAST, 595.07 FEET; THENCE SOUTH 22°45'25" EAST, 474.14 FEET; THENCE NORTH 87°09'54" EAST, 150.24 FEET; THENCE SOUTH 63°58'54" EAST, 338.74 FEET; THENCE SOUTH 47°49'12" EAST, 260.42 FEET; THENCE SOUTH 21°14'27" EAST, 184.50 FEET; THENCE SOUTH 32°15'27" EAST, 101.27 FEET; THENCE SOUTH 53°54'52" EAST, 114.54 FEET; THENCE SOUTH 54°49'44" EAST, 131.56 FEET; THENCE SOUTH 56°42'52" EAST, 377.93 FEET; THENCE SOUTH 57°29'03" EAST, 439.79 FEET; THENCE NORTH 88°33'22" EAST, 69.11 FEET; THENCE SOUTH 0°13'04" WEST, 194.44 FEET TO THE POINT OF BEGINNING.

DEC 1, 1997  
 DATE

*Evan E. Hansen*  
 EVAN E. HANSEN



### OWNER'S DEDICATION

SEE AMENDED PLAT PINNACLE PEAK CONDOMINIUMS FOR ORIGINAL OWNERS DEDICATION.

## PINNACLE PEAK SUBDIVISION AMENDED PLAT I

THE CURRENT OWNERS OF LOT 2 AND LOT 13 HAVE REVIEWED THIS PLAT AND DO HEREBY APPROVE THE AMENDMENTS AS SHOWN ON THIS PLAT.

*John Dours*  
*Sue Dours*  
*Samuel M. Heston*

### ACKNOWLEDGMENT

STATE OF UTAH  
 COUNTY OF CARBON S.S.  
 ON THE 21 DAY OF December A.D. 1997, PERSONALLY APPEARED BEFORE ME, THE SIGNERS OF THE FOREGOING DEDICATION WHO DULY ACKNOWLEDGED TO ME THAT THEY DID EXECUTE SAME.

MY COMMISSION EXPIRES 5/14/2000  
 NOTARY PUBLIC



SEC. 30, T 14 S, R 10 E, S.L.B. & M.

### P.R.W.I.D

APPROVED THIS 12 DAY OF November A.D. 19 97  
 BY THE COUNTY PLANNING COMMISSION.  
*David J. Spensko*  
 DISTRICT MANAGER

### PLANNING COMMISSION

APPROVED THIS 24 DAY OF November A.D. 19 97  
 BY THE COUNTY PLANNING COMMISSION.  
*Robert T. Smith*  
 CHAIRMAN, COUNTY PLANNING COMM.

### SOUTHEASTERN UTAH DISTRICT HEALTH DEPARTMENT

APPROVED THIS 24 DAY OF November A.D. 19 97  
*Edward J. Smith*  
 DIRECTOR, ENVIRONMENTAL HEALTH

### SURVEYOR'S CERTIFICATE

I, HEREBY CERTIFY THAT THIS OFFICE HAS EXAMINED THIS PLAT AND IT IS CORRECT IN ACCORDANCE WITH INFORMATION ON FILE IN THIS OFFICE.  
*Don J. Smith*  
 DATE 11/21/97 COUNTY SURVEYOR

### APPROVAL AS TO FORM

APPROVED THIS 24 DAY OF November A.D. 19 97  
*David J. Spensko*  
 COUNTY ATTORNEY

### COUNTY COMMISSION

PRESENTED TO THE BOARD OF COUNTY COMMISSIONERS THIS 1st DAY OF December A.D. 19 97, AT WHICH TIME THIS SUBDIVISION WAS APPROVED AND ACCEPTED.  
*John Dours*  
 ATTEST: COUNTY CLERK CHAIRMAN, BOARD OF COUNTY COMMISSIONERS

### RECORDED # 63125

STATE OF UTAH, COUNTY OF CARBON  
 RECORDED AND FILED AT THE REQUEST OF John Dours  
 DATE 11/19/97 TIME 10:47 AM BOOK 5 PAGE 27  
 FEE \$ 34.00  
*Carol B. O'Brien*  
 COUNTY RECORDER