

NELDON POWELL

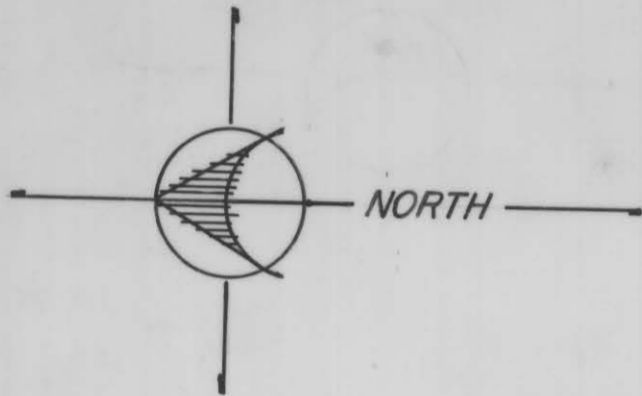
MINI - SUBDIVISION

IN

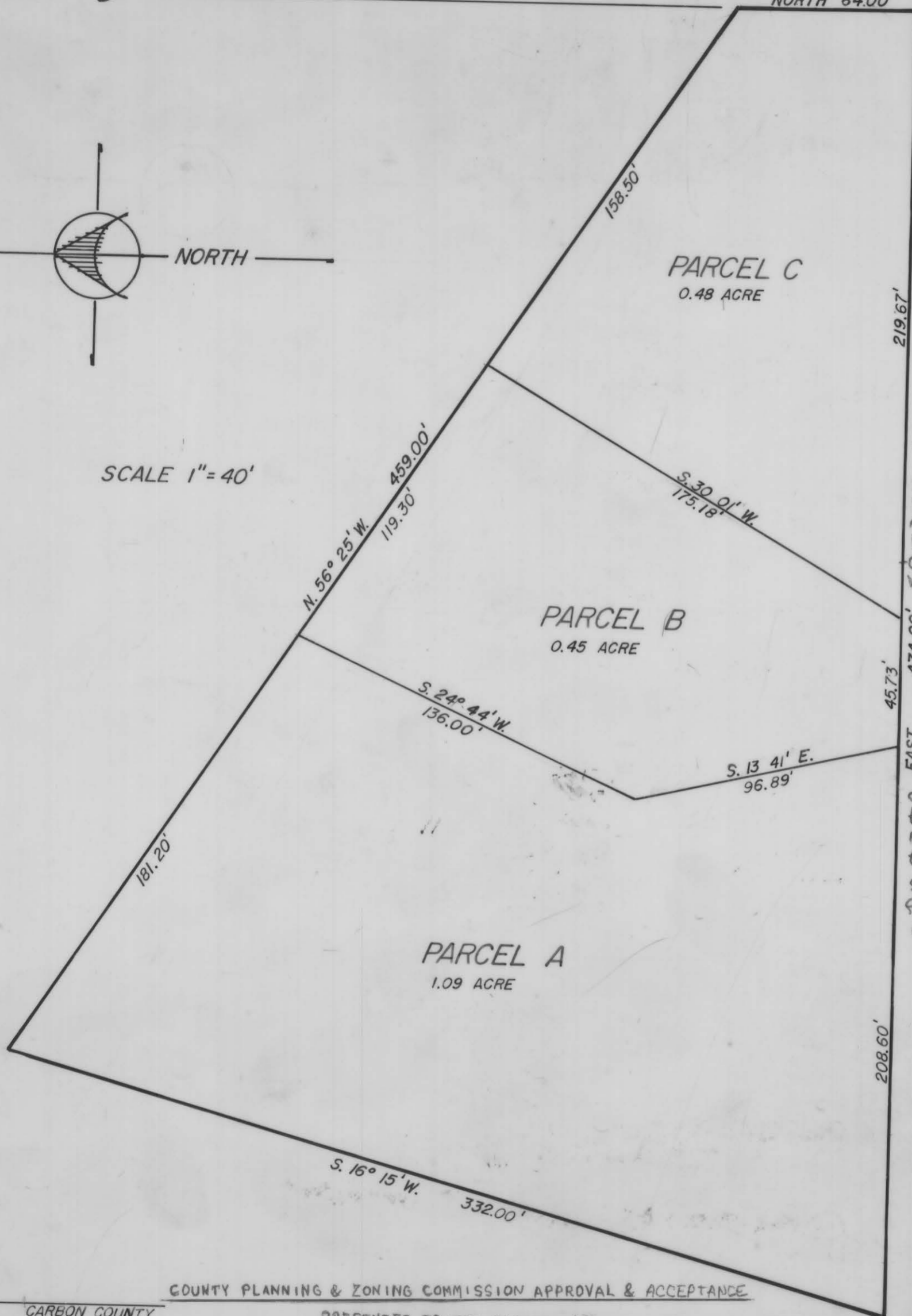
SEC. 26, T. 14 S., R. 10 E., S.L.B. & M.

E. 1/4 CORNER
SEC. 26

S.E. CORNER
SEC. 26



SCALE 1" = 40'



PARCEL "A"

Beginning at a point 474.00 Feet West of the southeast corner of Section 26, Township 14 South, Range 10 East of Salt Lake Base-Line Meridian; thence, 322.00 Feet on a bearing N 16° 15' E; thence, 181.20 Feet on a bearing S 56° 25' East; thence, 136.00 Feet on a bearing S 24° 44' W; thence, 96.89 Feet on a bearing S 13° 41' E; thence, 208.60 Feet due West to the starting point for an included area of 1.09 A.

PARCEL "B"

Beginning at a point 265.40 Feet West of the Southeast corner of Section 26, Township 14 South, Range 10 East of the Salt Lake Baseline Meridian; thence, 96.89 Feet on a bearing N 13° 41' W; thence, 136.00 Feet on a bearing N 24° 44' E; thence, 119.30 Feet on a bearing S 56° 25' E; thence, 175.18 Feet on a bearing S 30° 01' W; thence, 175.18 Feet on a bearing S 30° 01' W; thence, 45.73 Feet due West to the starting point for an included area of 0.45 A.

PARCEL "C"

Beginning at the Southeast corner of section 26, township 14 South, Range 10 East of the Salt Lake Baseline Meridian; thence, 219.67 Feet due West; thence, 175.18 Feet on a bearing N 30° 01' E; thence, 158.50 Feet on a bearing S 56° 25' E; thence, 64.00 Feet due South to the starting point for an included area of 0.48 A.



COUNTY PLANNING & ZONING COMMISSION APPROVAL & ACCEPTANCE

CARBON COUNTY

PRESENTED TO THE CARBON COUNTY PLANNING & ZONING COMMISSION THIS 11 DAY OF SEPT 1979 AT WHICH TIME THIS PETITION FOR REZONING WAS APPROVED AND ACCEPTED.

U. Leonard Sharp
PLANNING & ZONING COMMISSION CHAIRMAN

REGISTERED LAND SURVEYOR
UTAH - 4267

Joe E. Shoemaker

NELDON POWELL

P.O. BOX 559
EAST CARBON CITY, UTAH 84520

26-14-10

NELDON POWELL