

HELPER CITY

BLOCKS 1, 2 & 6

CARBON COUNTY PLATS

PRATT'S SURVEY OF WELBY TOWNSITE

	1			
17	1A-101 DE VINCENT ENTERPRISES, LLC .20 Ac.	4		
18	1A-100 PORTREE PROPERTIES, LLC .17 Ac.	3		
19	1A-99 CHRISTOPHER KANYUSIK .12 Ac.	2		
20	<table border="1" style="width: 100%;"> <tr> <td style="width: 50%;">1A-102 ELLIS L. PIERCE .08 Ac.</td> <td style="width: 50%;">1A-98 DE VINCENT ENTERPRISES, LLC .08 Ac.</td> </tr> </table>	1A-102 ELLIS L. PIERCE .08 Ac.	1A-98 DE VINCENT ENTERPRISES, LLC .08 Ac.	1
1A-102 ELLIS L. PIERCE .08 Ac.	1A-98 DE VINCENT ENTERPRISES, LLC .08 Ac.			

IVY STREET

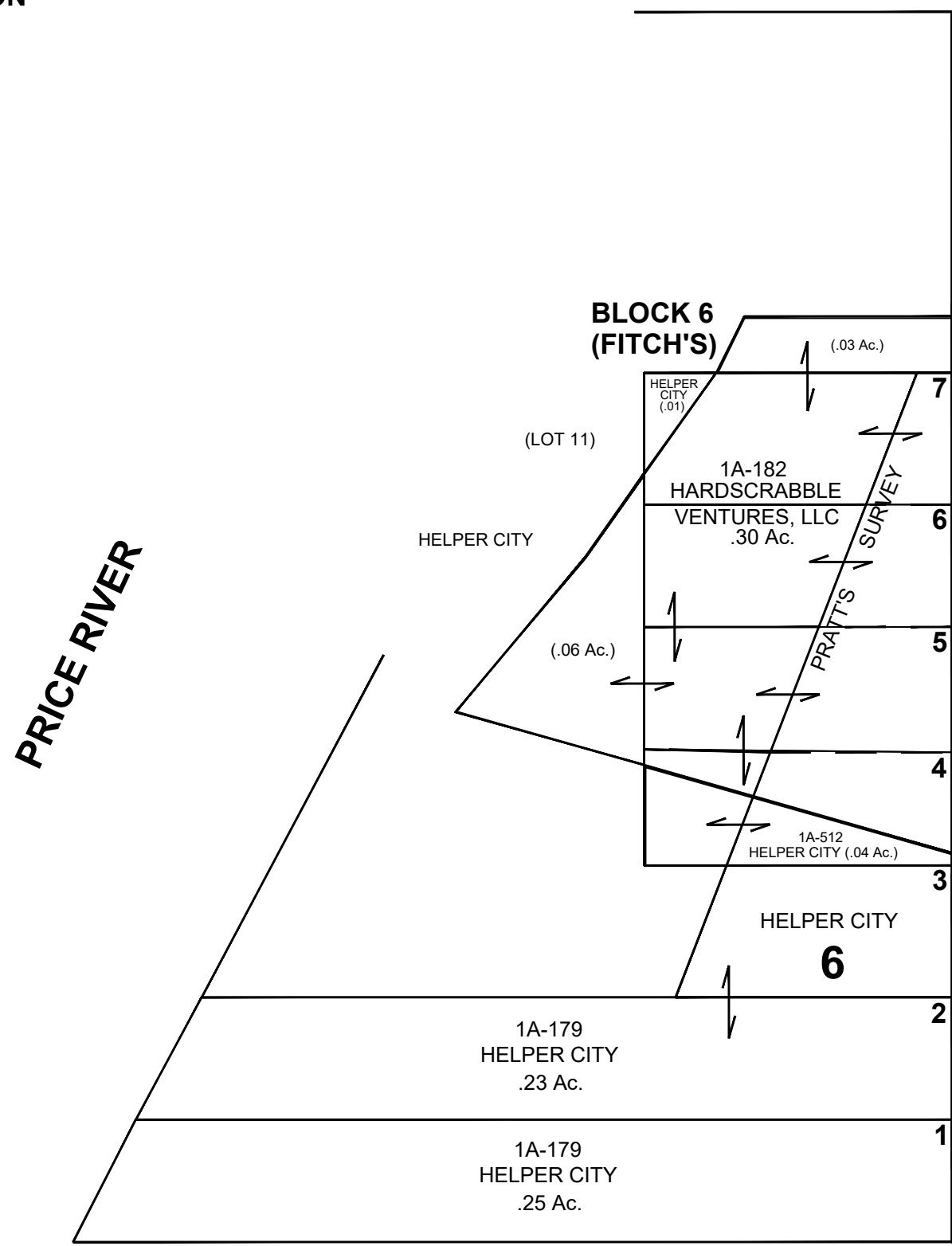
11	1A-112 GOOD HEART CONNECTION, LLC .11 Ac.	10	1A-111-1 JACQUELINE MALLET .06 Ac.		
12	1A-103 HELPER CITY	9			
13	.08 Ac.	8			
14	.08 Ac.	7			
15	1A-103-2 BS ADVANTAGE .08 Ac.	6			
16	<table border="1" style="width: 100%;"> <tr> <td style="width: 50%;">1A-118 DEBORAH L. PEARSON .08 Ac.</td> <td style="width: 50%;">1A-106 DAVID & PINEAU NIELSEN .11 Ac.</td> </tr> </table>	1A-118 DEBORAH L. PEARSON .08 Ac.	1A-106 DAVID & PINEAU NIELSEN .11 Ac.	5	
1A-118 DEBORAH L. PEARSON .08 Ac.	1A-106 DAVID & PINEAU NIELSEN .11 Ac.				
17	1A-119 CATHERINE MCINTYRE, ETAL .08 Ac.	4	1A-103-1 UTAH OUTPOST MOUNTAIN CHARLIE .08 Ac.		
18	1A-120 FRANCES E. SMITH, TR. .08 Ac.	3			
19	.08 Ac.	2	1A-103 HELPER CITY		
20	1A-122 SHELLI MARVIDAKIS .08 Ac.	1	.42 Ac.		

1ST WEST STREET

MAIN STREET

POPLAR STREET

FITCH'S WEST SIDE ADDITION



SCALE: 50 FEET = 1 INCH
AUGUST 26, 2022

Carbon County assumes no liability for errors or omissions in any information.