

## DESCRIPTIONS

BEGINNING 350.0 FT. SOUTH AND 206.25 FT. WEST OF THE NORTHEAST CORNER OF SECTION 30, T13S, R10E, S.L.B. & M. THENCE SOUTH 397.5 FT.; THENCE WEST 94.5 FT.; THENCE NORTH 397.5 FT.; THENCE EAST 94.5 FT. TO THE POINT OF BEGINNING. CONTAINING 0.26 ACRES.

## LOT-1

BEGINNING 625.0 FT. SOUTH AND 206.25 FT. WEST OF THE NORTHEAST CORNER OF SECTION 30, T13S, R10E, S.L.B. & M. THENCE SOUTH 122.5 FT.; THENCE WEST 70.5 FT.; THENCE NORTH 122.5 FT.; THENCE EAST 70.5 FT. TO THE POINT OF BEGINNING. CONTAINING 0.20 ACRES (8636.3 SQ. FT.)

## LOT-2

BEGINNING 525.0 FT. SOUTH AND 206.25 FT. WEST OF THE NORTHEAST CORNER OF SECTION 30, T13S, R10E, S.L.B. & M. THENCE SOUTH 100.0 FT.; THENCE WEST 70.5 FT.; THENCE NORTH 122.5 FT.; THENCE EAST 94.5 FT. TO THE POINT OF BEGINNING. CONTAINING 0.28 ACRES (12,390.0 SQ. FT.)

## LOT-3

BEGINNING 350.0 FT. SOUTH AND 206.25 FT. WEST OF THE NORTHEAST CORNER OF SECTION 30, T13S, R10E, S.L.B. & M. THENCE SOUTH 175.0 FT.; THENCE WEST 94.5 FT.; THENCE NORTH 175.0 FT.; THENCE EAST 94.5 FT. TO THE POINT OF BEGINNING. CONTAINING 0.38 ACRES (16,537.5 SQ. FT.)

## MINOR SUBDIVISION COUNTY PLANNING & ZONING COMMISSION APPROVAL & ACCEPTANCE

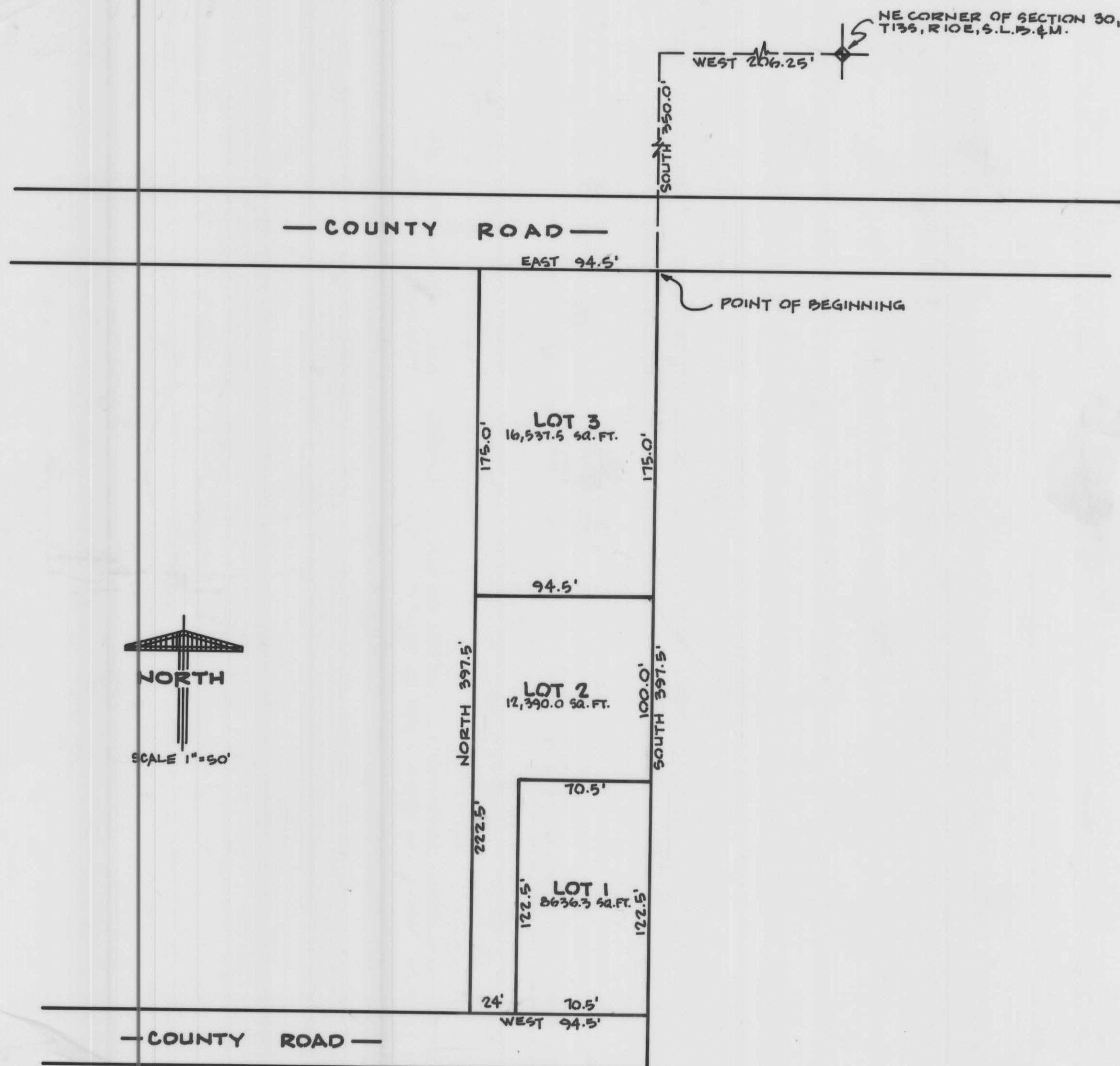
PRESENTED TO THE CARBON COUNTY PLANNING & ZONING COMMISSION THIS 10<sup>th</sup> DAY OF August, 1982, AT WHICH TIME THIS PETITION FOR WAS APPROVED AND ACCEPTED, AS A MINOR SUBDIVISION.

*[Signature]*  
PLANNING & ZONING COMMISSION CHAIRMAN

EMPIRE ENGINEERING		
86 NORTH 200 EAST PRICE, UTAH 84601		
DERALD PRETTYMAN MINI-4		
DRAWN BY: P.L.P.	APPROVED BY:	DRAWN:
DATE: AUGUST 5, 1982	SCALE: 1"=50'	

30-13-10

DERALD  
PRETTYMAN



DERALD PRETTYMAN