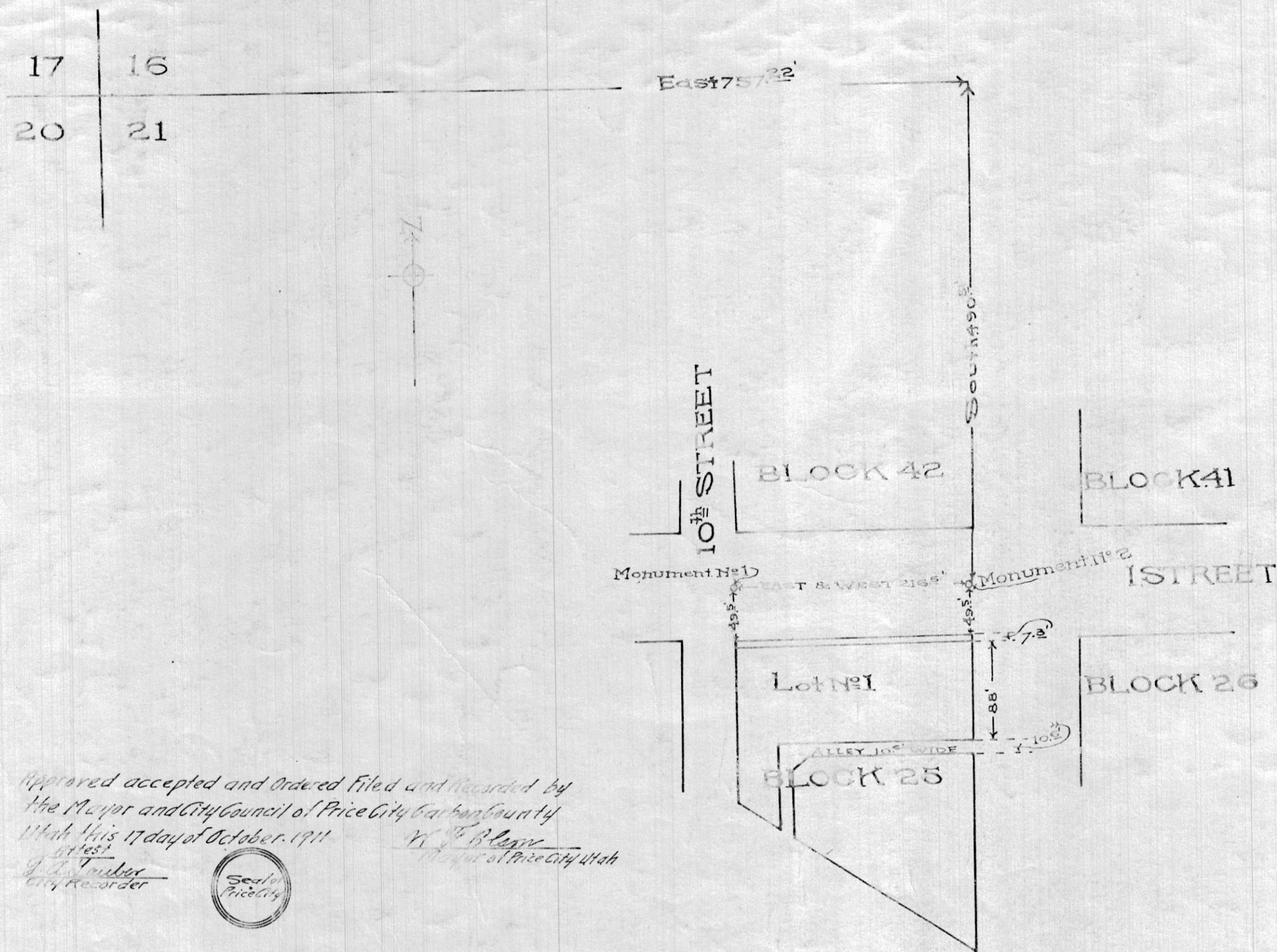


PLAT OF BLOCK 25 PRICE CITY UTAH
SCALE 1"=100



Approved, accepted and Ordered filed and Recorded by
 the Mayor and City Council of Price City Carbon County
 Utah this 17 day of October 1911
[Signature]
 Mayor
[Signature]
 City Recorder



SURVEYOR'S CERTIFICATE
 I, R. Turner, Surveyor of Carbon County, do hereby Certify
 that this plat is a true representation of a survey made
 by me on April 27th 1911 of Block 25 of the Price Townsite sur-
 vey. And that the said monuments 1, 2, 3 & 4 were set
 by myself and correspond with the indicated distance
 shown on this Plat with the N.W. corner of section 33
 Twp. 10 S. R. 10 E. S. 1, 11 and also with the West
 line of 7 Street between 8th & 9th streets of the Price
 Townsite Survey as shown by the present Enclosure
 this 20th day of April 1911. And that the said monu-
 ments 1 & 2 are 3/4" steel pins set 2' in the ground and
 concealed in white center marks in heads of each and
 are 49 1/2' North of the N.E. cor. and 111' from the S.W. cor. of said
 Block 25 of said survey as represented by this Plat.
[Signature]
 Surveyor of Carbon County

Filed for Record this 29th day of
 January 1912 at 10 A.M.
[Signature]
 County Recorder
 By *[Signature]* Deputy