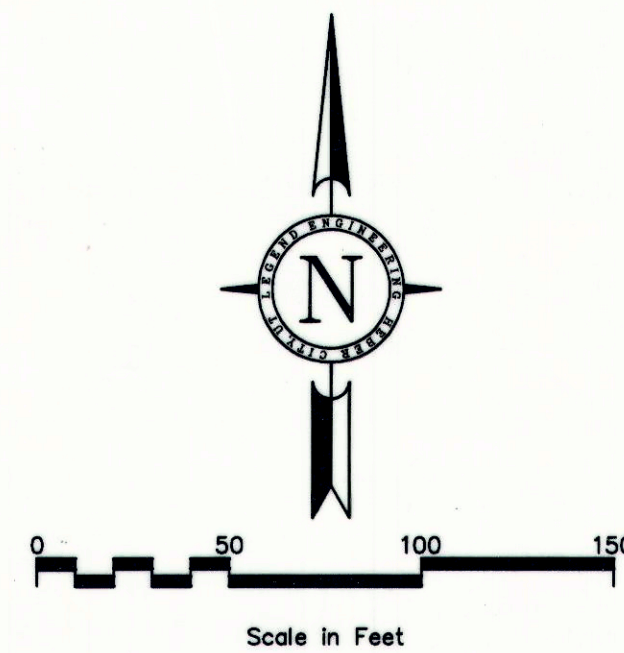
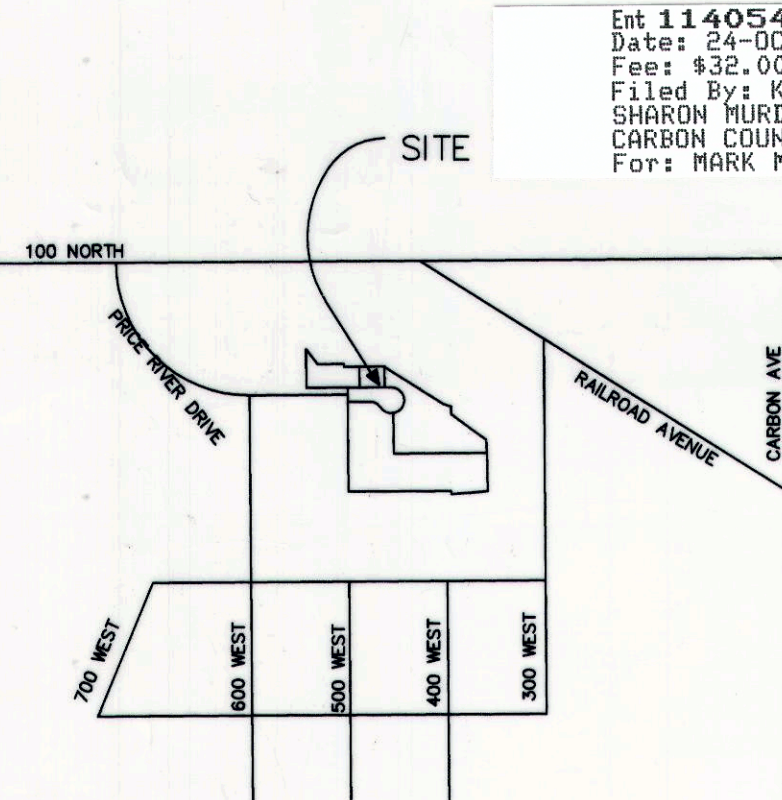


CURVE TABLE						
CURVE	LENGTH	RADIUS	DELTA	CHORD BEARING	CHORD FT	BEARING TO CENTER
C1	49.80	60.00	47°33'07"	N66°46'21"W	48.37	
C2	138.70	60.00	132°26'58"	N23°13'38"E	109.81	
C3	188.50	60.00	180°00'00"	N00°32'55"W	120.00	N00°32'55"W



VICINITY MAP



Ent 114054 & 604 P. 462
 Date: 24-01-2005 10:07AM
 Fee: \$32.00 Check
 Filed By: KR
 SHARON MURDOCK, Recorder
 CARBON COUNTY CORPORATION
 For: MARK MORLEY

Ent 114054 & 604 P. 110
 Date: 24-01-2005 10:12AM
 Fee: \$32.00 Check
 Filed By: KR
 SHARON MURDOCK, Recorder
 CARBON COUNTY CORPORATION
 For: MARK MORLEY

SURVEYOR'S CERTIFICATE

SURVEYOR'S CERTIFICATE
 I, GARY G. CHRISTENSEN, DO HERBY CERTIFY THAT I AM A PROFESSIONAL LAND SURVEYOR, HOLDING CERTIFICATE NUMBER 5152612, AS PRESCRIBED BY THE LAWS OF THE STATE OF UTAH. I FURTHER CERTIFY THAT BY THE AUTHORITY OF THE OWNER(S) A SURVEY WAS MADE UNDER MY DIRECTION OF THE LAND SHOWN HEREON AND DESCRIBED BELOW, AND THE SAME HAS BEEN CORRECTLY SURVEYED ON THE GROUND AS SHOWN ON THIS PLAT, AND THAT THIS PLAT IS TRUE AND CORRECT.

BOUNDARY DESCRIPTION

A parcel of land situate in the Northeast Quarter of Section 20, Township 14 South, Range 10 East, Salt Lake Base & Meridian, located in Price City, Carbon County, Utah, being more particularly described as follows:

Commencing at a point South 709.85 feet and West 168.56 feet from the Northeast Corner of Section 20 Township 14 South, Range 10 East, Salt Lake Base & Meridian and running thence; South 03°16'15" East 60.57 feet; thence South 89°27'05" West 430.95 feet; thence North 0°32'55" West 185.19 feet to a point on a 60 foot radius curve to the left through a central angle of 180°00'00" an arc distance of 188.50' a chord bearing of North 0°32'55" West a distance of 120.00 feet to a point of tangency; thence South 89°27'05" West 400.96 feet; thence North 0°32'55" West 177.08 feet; thence South 37°29'55" East 86.15 feet; thence North 89°27'05" East 122.00 feet; thence South 0°32'55" East 13.00 feet; thence North 89°27'05" East 187.38 feet; thence South 2°13'56" West 3.63 feet; thence North 89°00'58" East 2.25 feet; thence South 58°12'06" East 252.92 feet; thence South 57°54'34" East 60.47 feet; thence South 70°56'48" East 32.52 feet; thence South 70°36'35" East 9.23 feet; thence South 0°32'55" East 34.00 feet; thence South 52°03'55" East 47.52 feet; thence South 54°30'08" East 154.21 feet to the Point of Beginning.

Containing 3.04 acres more or less.

OWNER'S DEDICATION

KNOW ALL MEN BY THESE PRESENTS THAT WE, ALL THE UNDERSIGNED OWNERS OF ALL THE PROPERTY DESCRIBED IN THE SURVEYOR'S CERTIFICATE HEREON AND SHOWN ON THE MAP, AND SUBJECT TO ANY CONDITIONS AND RESTRICTIONS STATED HEREON, HAVE CAUSED THE SAME TO BE SUBDIVIDED INTO LOTS, BLOCKS, STREETS AND EASEMENTS, AND DO HEREBY DEDICATE THE STREETS AND OTHER PUBLIC PARCELS OF LAND AS INDICATED FOR THE PERPETUAL USE OF THE PUBLIC.

IN WITNESS WHEREOF WE HAVE HEREUNTO SET OUR HANDS THIS 17th DAY OF October, A.D. 2005.

ACKNOWLEDGEMENT (L.L.C.)

STATE OF UTAH
 COUNTY OF UTAH
 ON THE 17th DAY OF October, A.D. 2005, PERSONALLY APPEARED BEFORE ME, Mark Morley, and WHO BEING BY ME DULY SWORN DID SAY, EACH FOR HIMSELF, THAT HE, THE SAID Mark Morley, IS THE PRESIDENT AND HE THE SAID Sharon Murdock IS THE SECRETARY OF LEGEND ENGINEERING, LLC CORPORATION, AND THAT THE WITHIN AND FOREGOING INSTRUMENT WAS SIGNED IN BEHALF OF SAID CORPORATION BY AUTHORITY OF A RESOLUTION OF ITS BOARD OF DIRECTORS AND SAID Sharon Murdock, AND EACH DULY ACKNOWLEDGED TO ME THAT SAID CORPORATION EXECUTED THE SAME AND THAT THE SEAL AFFIXED IS THE SEAL OF SAID CORPORATION.

MY COMMISSION EXPIRES 2-106

ACCEPTANCE BY LEGISLATIVE BODY

THE CITY COUNCIL OF PRICE CITY, COUNTY OF CARBON, HEREBY APPROVES THIS SUBDIVISION SUBJECT TO CONDITIONS AND RESTRICTIONS STATED HEREON, AND HEREBY ACCEPTS THE DEDICATION OF ALL STREETS, EASEMENTS AND OTHER PARCELS OF LAND INTENDED FOR PUBLIC AREAS AS INDICATED FOR PERPETUAL USE OF THE PUBLIC THIS 17 DAY OF October, A.D. 2005.

MAYOR
Richard Latten
 COUNCIL MEMBER
Joanne McRay
 COUNCIL MEMBER
Joanne Lesson
 ATTEST PRICE CITY RECORDER

COUNCIL MEMBER
Sharon Murdock
 COUNCIL MEMBER
Sharon Murdock
 COUNCIL MEMBER

PLANNING COMMISSION APPROVAL

APPROVED THIS 20 DAY OF October, A.D. 2005 BY THE PLANNING COMMISSION OF PRICE CITY.

Laurie A. Tyson
 DIRECTOR-SECRETARY

Laurie A. Tyson
 CHAIRMAN, PLANNING COMMISSION

Sharon Murdock
 COUNTY RECORDER

CITY ATTORNEY'S CERTIFICATE

THIS PLAT HAS BEEN APPROVED BY THE PRICE CITY ATTORNEY ON THIS 17 DAY OF October, A.D. 2005.

Rob Sampson
 PRICE CITY ATTORNEY

CITY ENGINEER'S CERTIFICATE

GARY D. SOUTAS AS PRICE CITY ENGINEER HAVE INSPECTED THE FOREGOING PLAT AND BOUNDARY DESCRIPTION AND FIND THEM TO BE CORRECT IN ACCORDANCE WITH INFORMATION ON FILE AND DO HEREBY GIVE APPROVAL OF SAID PLAT ON THIS 17 DAY OF October, A.D. 2005.

GARY D. SOUTAS
 PRICE CITY ENGINEER

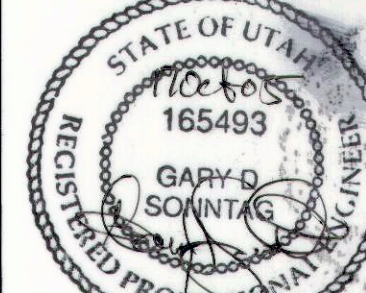
SURVEYOR'S SEAL



NOTARY PUBLIC SEAL



CITY ENGINEER SEAL



CLERK-RECORDER SEAL



SHEET:

1

PROJECT ID: 517
 FILE NAME: SCALE: 1"=20'

LEGEND ENGINEERING, LLC
 P.O. BOX 475
 PRICE CITY, UT 84032
 PHONE: 801-641-4447
 TOLL FREE FAX: 1-866-310-9972
 www.legendengineering.com



PRICE RIVER DRIVE BUSINESS PARK
 SECOND AMENDED PLAT 'B'
 PRICE CITY, UTAH

