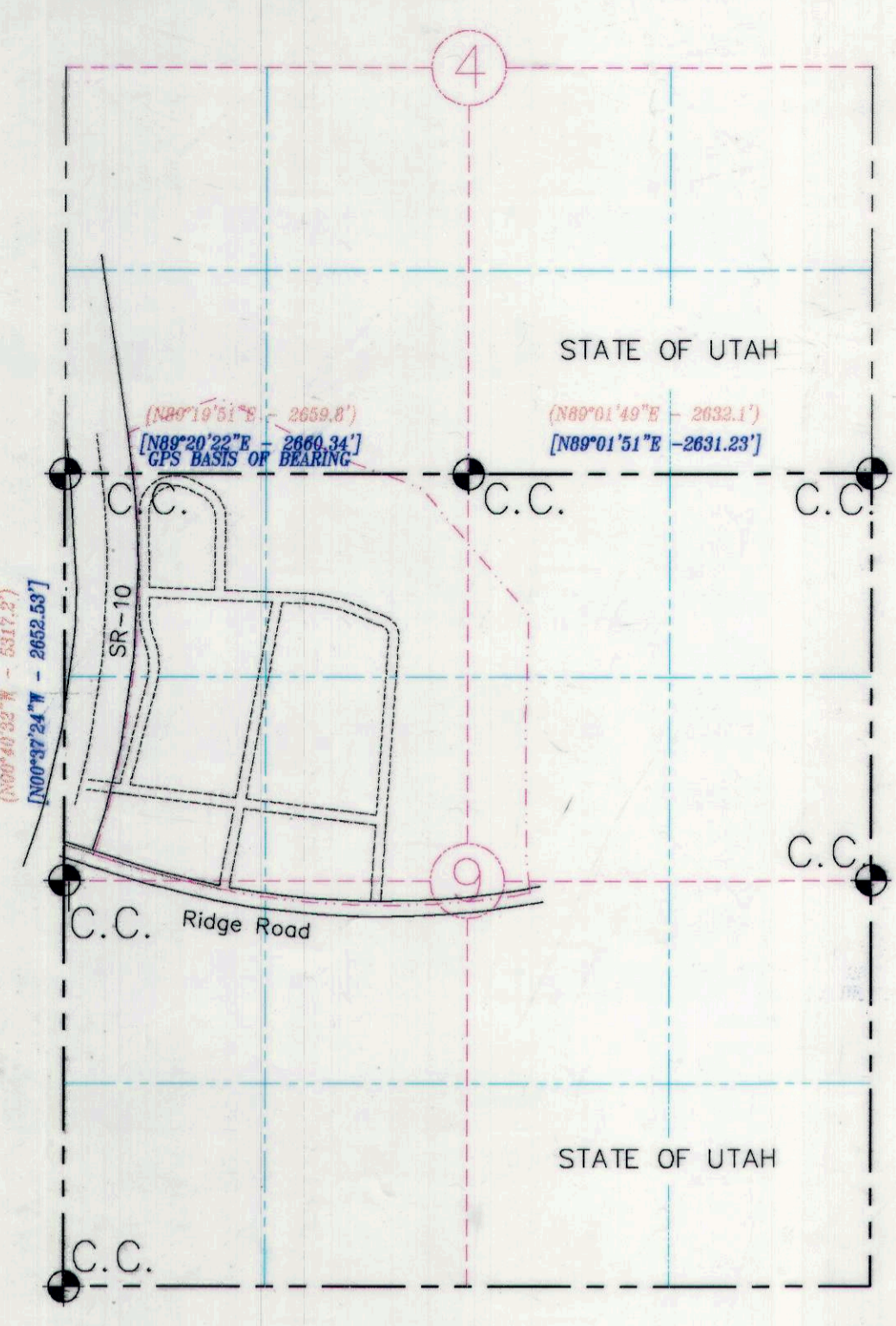


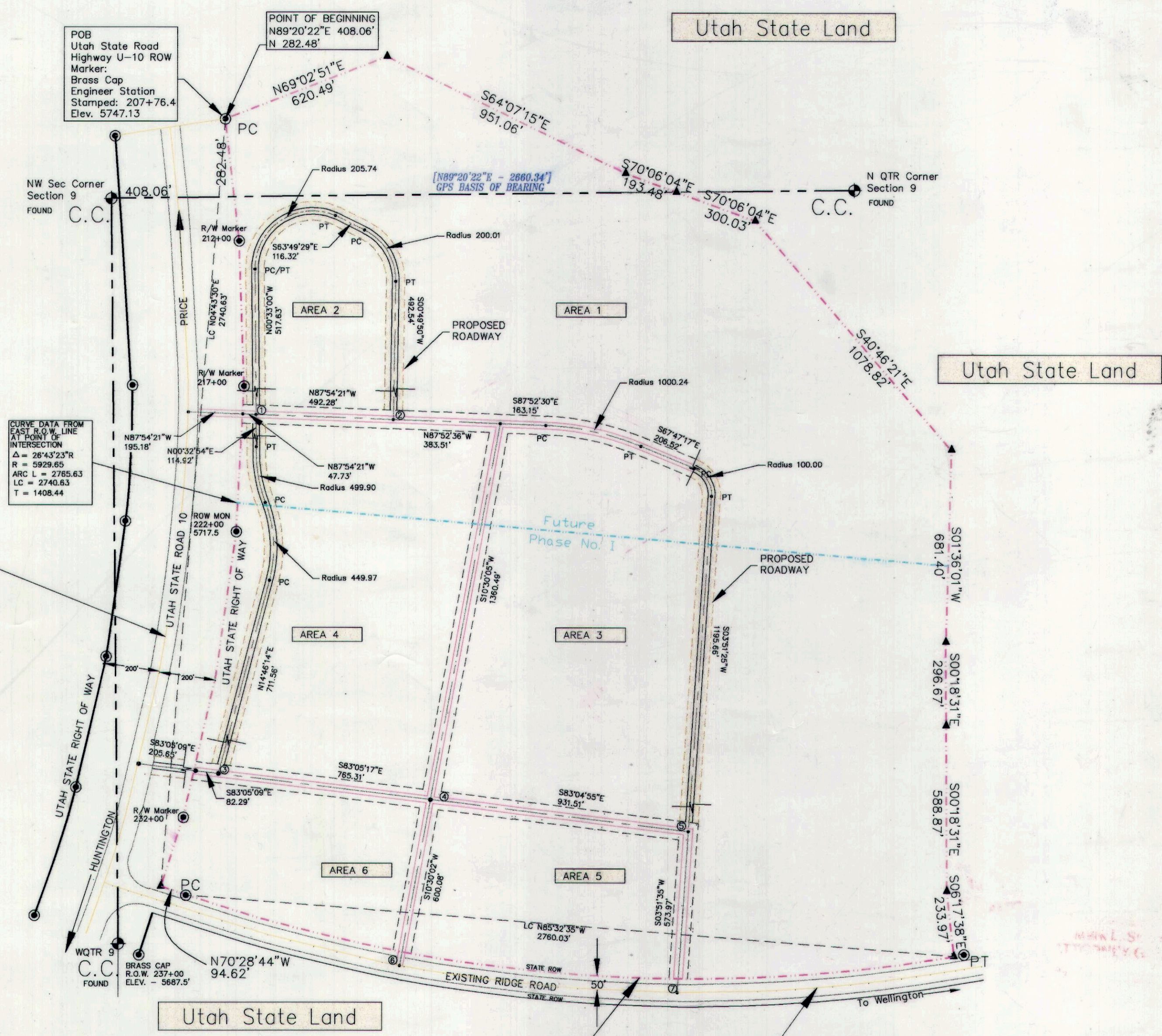
E 085815 P
 Date 6-JUN-2001 10:40am S P 51
 Fees: No Fee Check
 SHARON MURDOCK, Recorder
 Filed By JB
 For UTAH STATE TRUST LANDS
 CARBON COUNTY CORPORATION

RIDGE ROAD INDUSTRIAL PARK

A MAJOR SUBDIVISION
 T15S, R10E, S.L.B.&M.



APPROXIMATE LOCATION
 NOT TO SCALE



CURVE DATA FROM
 CENTERLINE
 INTERSECTION
 Δ = 26°43'23"R
 R = 2896.85
 ARC L = 2785.63
 LC = 2748.53
 T = 1408.44

CURVE DATA FROM
 CENTERLINE
 INTERSECTION
 Δ = 37°07"R
 R = 1300
 T = 1923.6
 ARC L = 3711.7
 R = 5728.55
 P.L. 2274.00

FROM NW CORNER SECTION 9 ROADWAY INTERSECTION COORDINATES	
1	S 770.15' E 519.97'
2	S 788.15' E 1011.82'
3	S 2047.96' E 387.45'
4	S 2140.06' E 1147.20'
5	S 2252.26' E 2071.93'
6	S 2736.09' E 1037.84'
7	S 2824.93' E 2033.29'

Prepare For:
 State of Utah
 School Institutional Trust Lands Administration
 Prepared By:
 Talon Resources, Inc.

- LEGEND**
- BOUNDARY
 - EXISTING INDUSTRIAL ROAD
 - PROPOSED INDUSTRIAL ROAD
 - SECTION LINE
 - 1/4 SECTION LINE
 - CARBON COUNTY
 - GPS - SURVEY
 - REBAR
 - SECTION CORNER FOUND
 - R.O.W. MARKERS
 - C.C. CARBON COUNTY MONUMENT (ALUMINUM CAP)

Note:

- Basis of Bearing is derived from GPS, N89°20'22"E - 2660.34' between the NW Section Corner of Section 9, T15S, R10E, S.L.B.&M. and the North Quarter Corner of Section 9, T15S, R10E, S.L.B.&M.
- No R.O.W. Markers found on Ridge Road. R.O.W. measured 50' from centerline of existing roadway.

Surveyor's Certificate:
 I, Albert J. Spensko, a Registered Professional Land Surveyor, holding Certificate 148652, State of Utah, do hereby certify that the information on this drawing is a true and accurate survey based on data of record and was conducted under my personal direction and supervision as shown hereon.

Albert J. Spensko
 Albert J. Spensko
 Date: May 23, 2001



THE MAJOR SUBDIVISION & PROPERTY DESCRIBED IN THIS DOCUMENT ARE LOCATED IN CARBON COUNTY, STATE OF UTAH SECTIONS 9, T15S, R10E S.L.B.&M.

BOUNDARY DESCRIPTION
 That portion of land in Carbon County filed under Carbon County ownership Plat No. 2A-1513-95 (no Book-Page No.), lying in the NW Quarter of Section 9, and the SW Quarter, SW Quarter of Section 4, T15S, R10E, S.L.B.&M. having a GPS basis of bearing, N89°20'22"E, 2660.34' between the NW Corner and the North Quarter Corner of Section 9.

Beginning at a point N89°20'22"E, 408.06' along the section line; and North, 282.48' from the Northwest Section Corner of Section 9, T15S, R10E, S.L.B.&M., the point being a Brass Cap identifying Utah Department of Transportation Right of Way for the Utah State Highway U-10, said cap stamped engineer station 207+76.4 and elevation of 5747.13; running thence N69°02'51"E, 620.49'; thence S64°07'15"E, 951.06'; thence S70°06'04"E, 193.46', to a point on the North Section Line of Section 9, T15S, R10E, S.L.B.&M. said point being N89°20'22"E (2025.13' East of said NW Corner); thence S70°06'04"E, 300.03'; thence S40°46'21"E, 1078.82'; thence S01°36'01"W, 681.40'; thence S00°18'31"E, 296.67'; thence S00°18'31"E, 588.87'; thence S06°17'38"E, 233.97' more or less to a point on the Utah State Ridge Road Right of Way, said Right of Way being 50' from center of road; said point being located on a nontangent Right of Way curve, with a Long Chord bearing of N85°32'35"W, a distance of 2760.03', a radius of 5670.0', and a Δ = 28°10'24", thence running westerly along the arc of the curve concave to the North a distance of 2788.13' to the PT of the curve, thence N70°28'44"W, 94.62'; to a point on the East Right of Way line of highway S.R. 10, said point is located on a nontangent curve with a Long Chord bearing of N04°43'30"E, a distance of 2740.63', a radius of 5929.65', and a Δ = 26°43'23", thence northeasterly along the curve concave to the west a distance of 2765.63' more or less to the point of beginning.
 Approx. 165.4 Acres



Talon Resources
 Technical Group
 375 South Carbon Ave.
 Price, Utah 84501
 Phone (435)637-8781
 FAX (435)637-8603

ACCESS ROADWAYS
 All access roadways and interior roadways as designated under phase No. 1 will be dedicated to Carbon County for access into and through the Ridge Road Industrial Park as noted on the drawing.
 All access and interior roadways are 66' in width.

OWNER'S DEDICATION
 KNOW ALL MEN BY THESE PRESENT THAT THE UNDERSIGNED OWNER OF ALL THE ABOVE DESCRIBED TRACT OF LAND, HAVING CAUSED THE SAME TO BE SUBDIVIDED INTO AREAS AND PUBLIC STREETS TO BE HERE AFTER KNOWN AS THE RIDGE ROAD INDUSTRIAL PARK

FOR GOOD AND VALUABLE CONSIDERATION RECEIVED, DOES HEREBY DEDICATE AND CONVEY TO CARBON COUNTY FOR PERPETUAL USE OF THE PUBLIC, ALL PARCELS OF LAND SHOWN ON THIS PLAT AS PUBLIC STREETS, AND DOES HEREBY DEDICATE AND CONVEY TO CARBON COUNTY AND TO EACH PUBLIC UTILITY PROVIDING UTILITY SERVICES NON-EXCLUSIVE EASEMENTS FOR INSTALLATION AND MAINTENANCE OF PUBLIC UTILITIES AND DRAINAGE FACILITIES, ON, UNDER AND ACROSS THE AREAS AS SHOWN ON THIS PLAT RESERVING, HOWEVER, TO GRANTOR THE ENTIRE INTEREST OF GRANTOR IN THE MINERAL ESTATE IN THE LANDS SO CONVEYED AND DEDICATED. ALL AREAS, STREETS AND EASEMENTS ARE AS NOTED OR SHOWN.

IN WITNESS WHEREOF WE HAVE HEREUNTO SET OUR HANDS THIS 4 DAY OF June 2001.

Mark L. Shuff
 Approved as to Form
 Mark L. Shuff
 ATTORNEY GENERAL

STATE OF UTAH
 THE STATE OF UTAH, ACTING THROUGH THE SCHOOL AND INSTITUTIONAL TRUST LANDS ADMINISTRATION

ACKNOWLEDGMENT
 STATE OF UTAH S.S.
 County of CARBON
 ON the 4th day of JUNE, A.D., 2001, personally appeared before me, the undersigned Notary Public, in and for the County of CARBON, in said State of Utah, the signer (Kevin S. Carter) of the above Owner's Dedication, who duly acknowledge to me that KEVIN S. CARTER signed it freely and voluntarily and for the uses therein mentioned.

NOTARY PUBLIC
 Residing in CARBON County

APPROVED THIS 4th DAY OF June, A.D. 2001
Kevin S. Carter
 PRD MANAGER (Asst.)

APPROVED THIS 23rd DAY OF MAY, A.D. 2001
Erin E. Hansel
 COUNTY SURVEYOR

APPROVED AS TO FORM THIS 23rd DAY OF MAY, A.D. 2001
William D. Krampel
 CHAIRMAN,
 BOARD OF COUNTY COMMISSIONERS

APPROVED AS TO FORM THIS 23rd DAY OF MAY, A.D. 2001
Sharon Murdock
 COUNTY RECORDER

COUNTY PLANNING & ZONING COMMISSION APPROVAL & ACCEPTANCE
 PRESENTED TO THE CARBON COUNTY PLANNING & ZONING COMMISSION THIS 30 DAY OF May, 2001 AT WHICH TIME THIS PETITION FOR WAS APPROVED AND ACCEPTED.
Nick Tatton
 PLANNING & ZONING COMMISSION CHAIRMAN

BOARD OF HEALTH
 APPROVED THIS 23rd DAY OF May, A.D. 2001
Julien M. Bishop
 DIRECTOR Environmental Health
 COUNTY BOARD OF HEALTH
 S.E. District Health

SURVEYOR'S CERTIFICATE
 I HEREBY CERTIFY THAT THIS OFFICE HAS EXAMINED THIS PLAT AND IS CORRECT IN ACCORDANCE WITH INFORMATION ON FILE IN THIS OFFICE.
 DATE: MAY 23, 2001
Erin E. Hansel
 COUNTY SURVEYOR

APPROVAL AS TO FORM
 APPROVED AS TO FORM THIS 23rd DAY OF MAY, A.D. 2001
William D. Krampel
 COUNTY ATTORNEY

APPROVAL AS TO FORM
 PRESENTED TO THE BOARD OF COUNTY COMMISSIONERS THIS 23rd DAY OF MAY, A.D. 2001, AT WHICH TIME THIS SUBDIVISION WAS APPROVED AND ACCEPTED.
William D. Krampel
 CHAIRMAN,
 BOARD OF COUNTY COMMISSIONERS

STATE OF UTAH, COUNTY OF CARBON RECORDED AND FILED AT THE REQUEST OF Utah State
 DATE 6/16/01 TIME 10:40 BOOK 5 PAGE 51
 FEE
Sharon Murdock
 COUNTY RECORDER

REVISIONS

DATE:	BY:
05/21/01	JS

SITLA
 RIDGE ROAD INDUSTRIAL PARK
 Carbon County, Utah

DRAWN BY:
 W. JACOBSON
 CHECKED BY:
 LWJ / AJS
 DATE:
 01/30/01
 SCALE:
 1" = 300'
 JOB NO.
 126
 DRAWING NO.
 1
 SHEET 1 OF 1