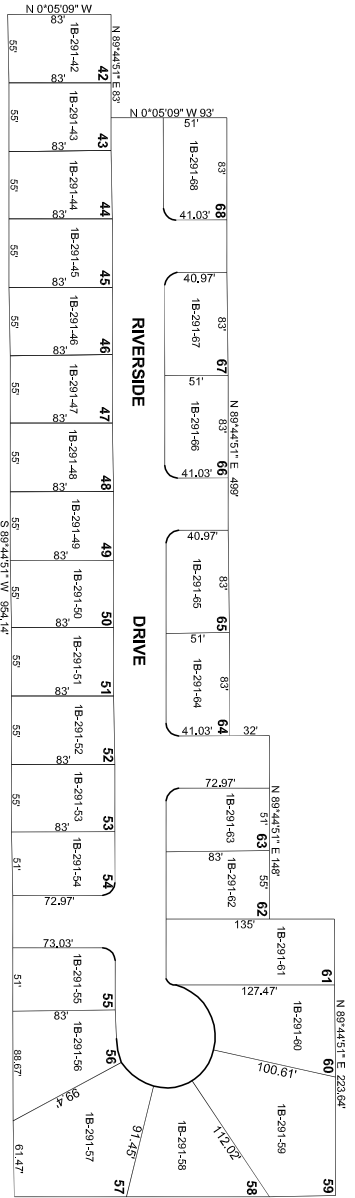


CARBON COUNTY PLATS

RIVERSIDE HOMES PLAT 'C'

PART OF NE4 SECTION 12, T15S, R10E, SLB&M

NOTE: ALL LOTS OWNED BY FRANK H. JR. & JUANITA A. FECHKO
UNLESS MARKED OTHERWISE



Carbon County assumes no liability for errors or omissions in any information.

SCALE: 80 FEET = 1 INCH

1/10/2013 4:05:49 PM