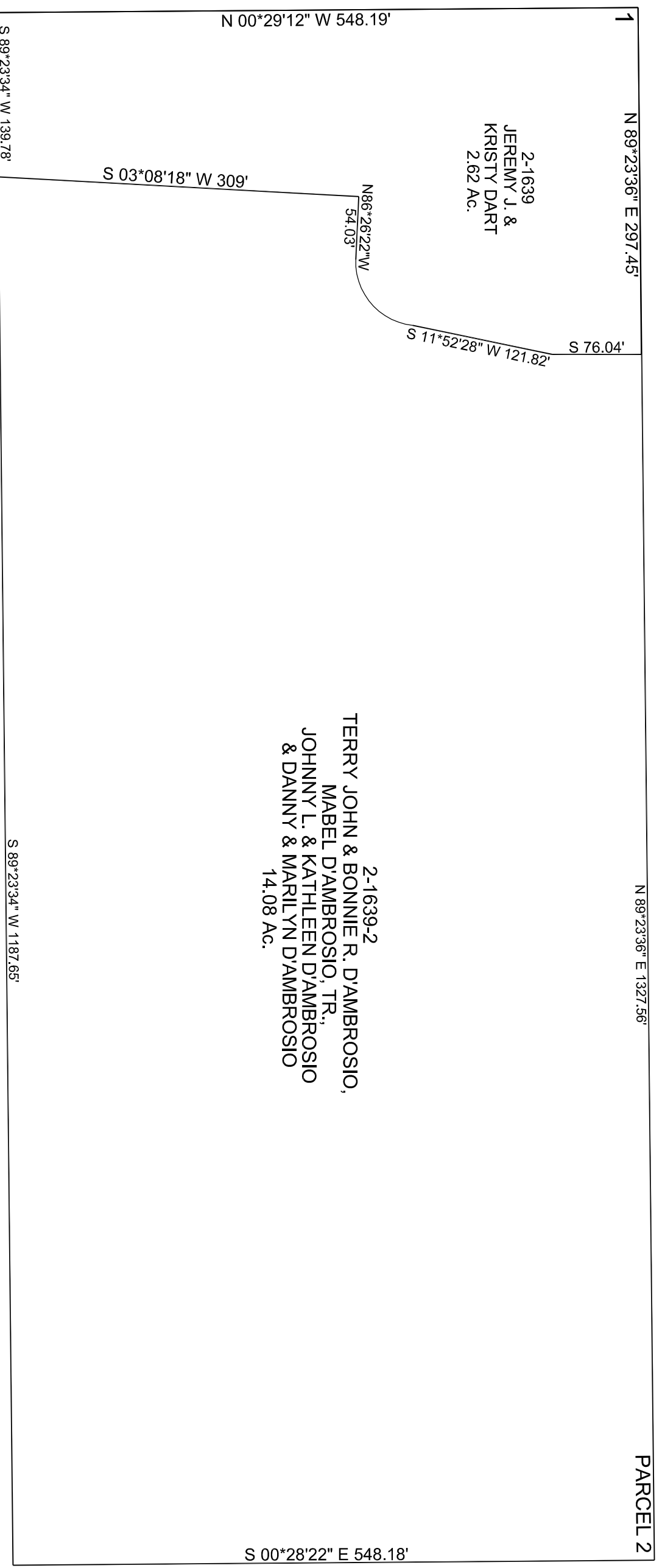
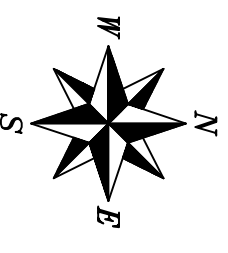


# CARBON COUNTY PLATS

SCARTEZINA SUBDIVISION

PART OF SECTION 28, T14S, R10E, SLB&M



2-1639  
JEREMY J. &  
KRISTY DART  
2.62 Ac.

2-1639-2  
TERRY JOHN & BONNIE R. D'AMBROSIO,  
MABEL D'AMBROSIO, TR.,  
JOHNNY L. & KATHLEEN D'AMBROSIO  
& DANNY & MARILYN D'AMBROSIO  
14.08 Ac.

SCALE: 100 FEET = 1 INCH

Carbon County assumes no liability for errors or omissions in any information.