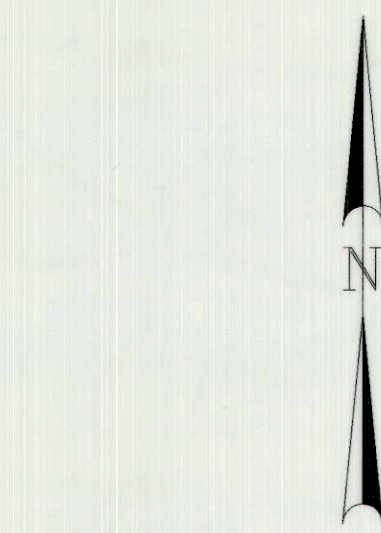
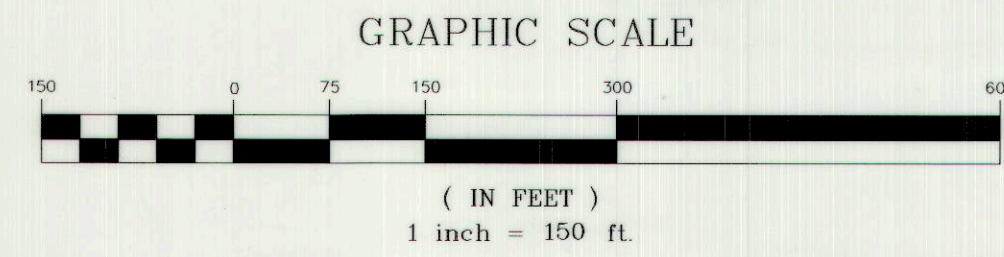
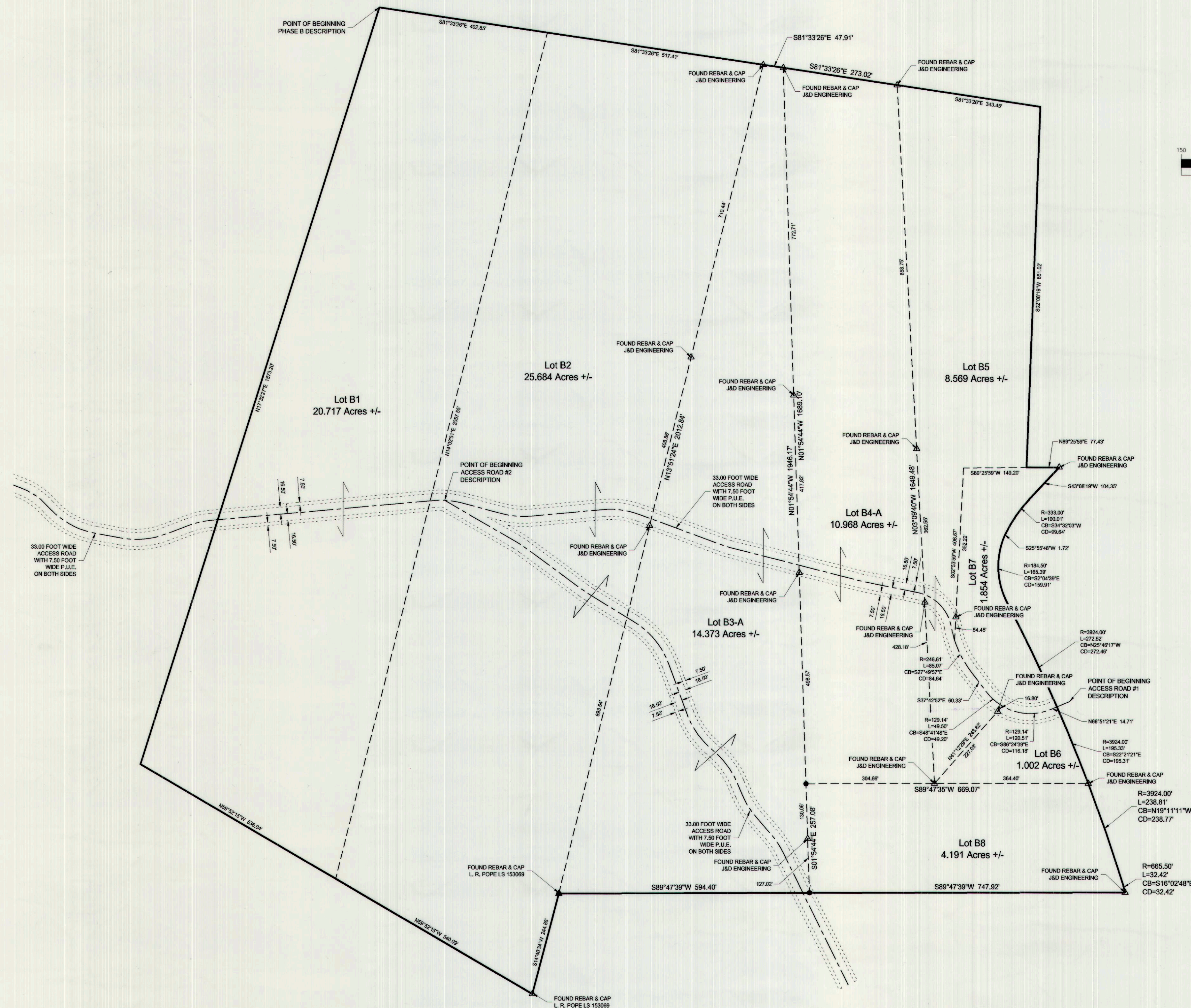


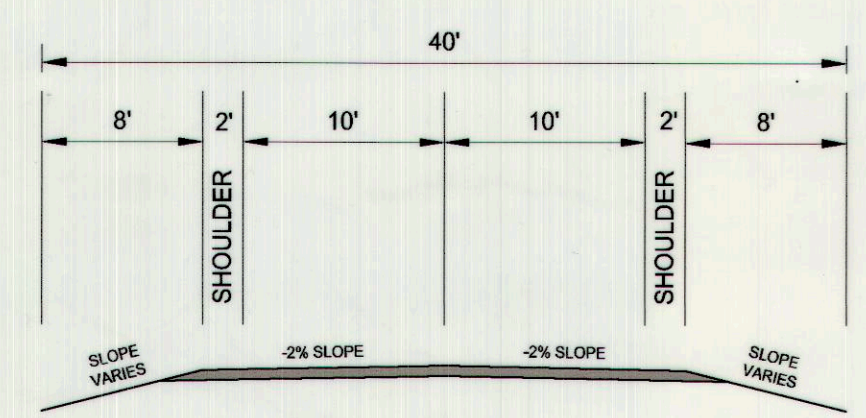
# Scofield Phase B - Amended Subdivision

Located in Sections 7 and 18, T. 12 S., R. 7 E., S.L.B. & M.  
Carbon County, Utah  
2022



**LEGEND**

- SURVEYED BOUNDARY LINE
- - - - - PREVIOUS SURVEYED BOUNDARY LINE
- SECTION LINE
- - - - - QUARTER SECTION LINE
- - - - - 40 ACRE LINE
- - - - - DEED LINE
- - - - - EXISTING FENCE
- SET REBAR WITH PLASTIC CAP STAMPED JONES & DEMILLE ENG. UNLESS OTHERWISE NOTED
- △ FOUND SURVEY MONUMENT AS NOTED
- ⊕ FOUND SECTION CORNER AS NOTED
- ⊖ NOT FOUND SECTION CORNER AS NOTED
- ⊕ FOUND QUARTER SECTION CORNER AS NOTED
- ⊖ NOT FOUND QUARTER SECTION CORNER AS NOTED



PROFESSIONAL LAND SURVEYOR  
TROY W. GARD  
No. 5551169  
1/6/22

PREPARED BY:  
**Jones & DeMille Engineering, Inc.**  
CIVIL ENGINEERING - SURVEYING - TESTING - GIS - ENVIRONMENTAL  
- infrastructure professionals -  
1.800.748.5275 www.jonesanddemille.com

PROJECT NUMBER: 2008-026 FILE NAME: h:\j\proj\2008-026\dwg\2008-026 subd - b - amend.dwg  
SURVEYED BY: G.B.N./T.W.G. DRAWN BY: T.W.G. UPDATED: 1/3/2022 PLOTTED: 1/3/2022

## Scofield Phase B Amended Subdivision

Carbon County, Utah  
Scale: 1" = 150'

SHEET 3 OF 3