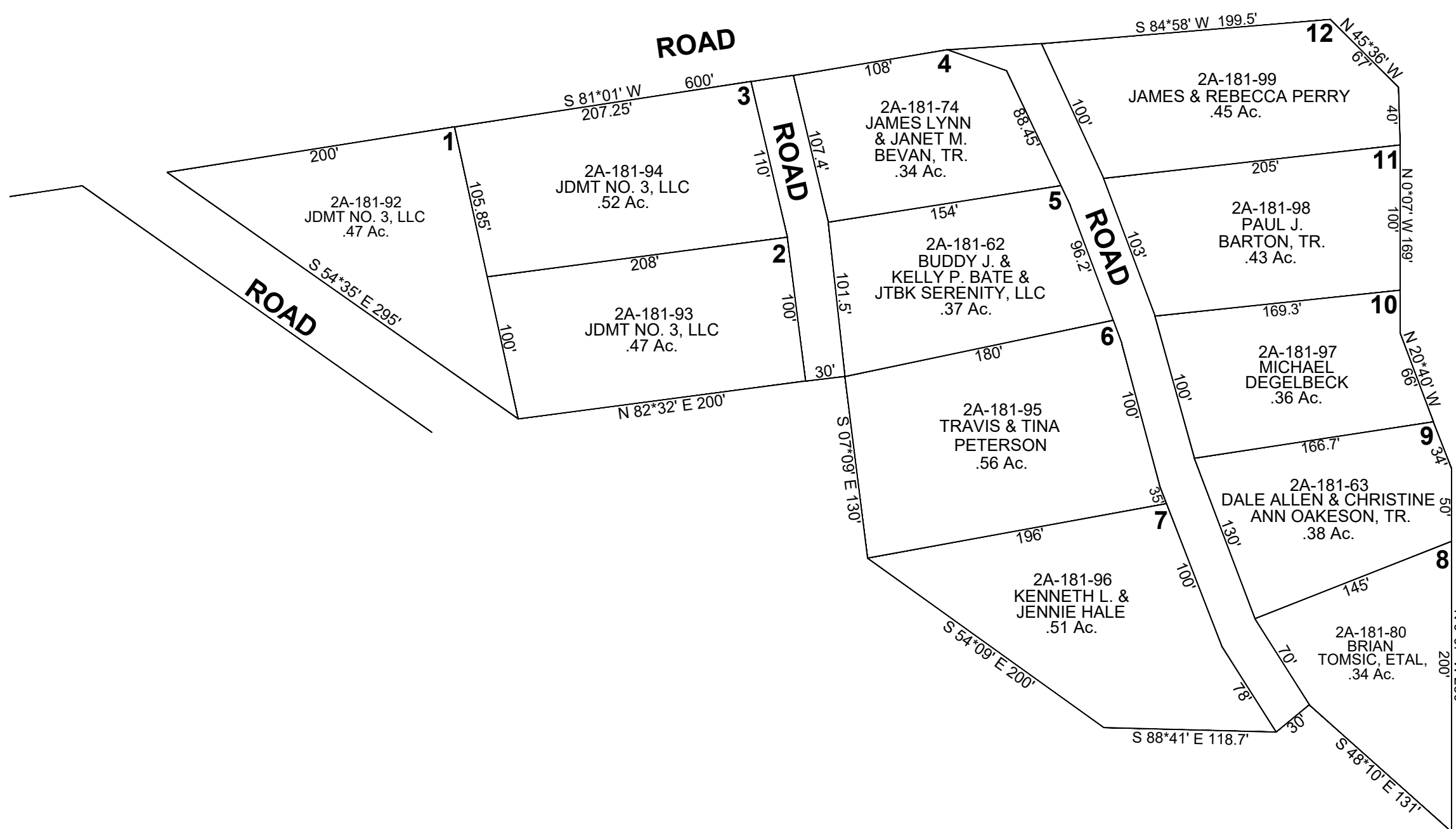


CARBON COUNTY PLATS
 SCOFIELD MOUNTAIN HOMES SUBDIVISION
 PART OF SE4 SECTION 19, T12S, R7E
 ADDITION #1



SCALE: 100 FEET = 1 INCH
 MARCH, 11 2022

Carbon County assumes no liability for errors or omissions in any information.