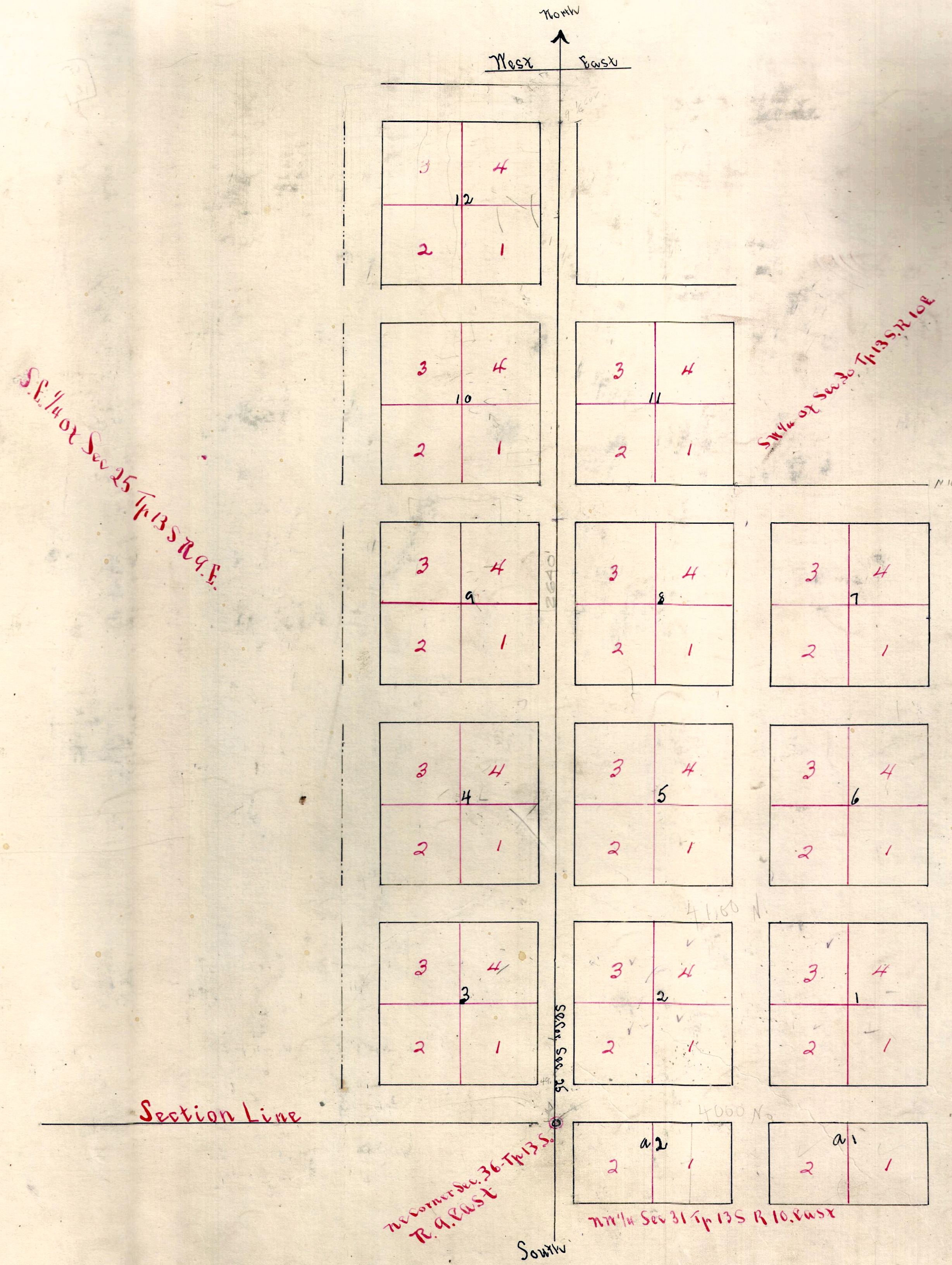


# Spring Glen Townsite.



Scale 200 feet to 1 inch

All blocks are 260x260 square, except A and A 2, which are 26 east and west by 13 North and South. All Streets are 6 rods wide.

Plat of the Spring Glen Townsite as surveyed by me on May 1<sup>st</sup> and 25<sup>th</sup> 1890 situate partly in the SE 1/4 of Sec 25 T. 13 S. R. 10 E. partly in the SW 1/4 of Sec 30 and partly in Sec 31 T. 13 S. R. 10 E. 81 acres and 132 sq rods in this Townsite.

Elias H. Cox  
County Surveyor Emery County

Approved 5<sup>th</sup> day of Oct 1891

Jasper Robertson - Judge

Attest: Carl Wilberg - Probate Clerk  
Recorded Oct 5<sup>th</sup> 1891 - Carl Wilberg - Recorder.

1  
3250  
3260  
2270