

Engineer's Certificate

State of Utah }
County of Carbon } ss

I, F.S. Dunlevy, a Civil Engineer, of Price Utah, do hereby Certify, that by authority of the Owners, whose names are shown in the Owners Dedication hereon, that I have Surveyed and platted into Lots and Streets, a certain tract of land located within Section 7, Township 14 South, Range 10 East, of the Salt Lake Meridian. That this Map is a full, true and correct Map of the tract of land embraced within this plat, with the dimensions, sizes and Field Notes as shown thereon; that the land embraced within this plat is located within the NW 1/4 of the NW 1/4 of said Section 7, being more particular described as follows: Beginning at a point 640 feet South and 826 feet East of the N.E. Cor. of the NW 1/4 of the NW 1/4 of Sec. 7, Twp. 14 S., R. 10 E., S.L.M., thence West 1291.46 feet, th. South 140 feet, th. East 1423.40 feet to the State Highway, th. N 39° 25' W 207.25 feet to place of beginning. That this plat comprises Lots 1 to 25 inclusive and is to be hereafter known as the "State Highway Subdivision."

F.S. Dunlevy
Engineer.

Subscribed and Sworn to before me this 7th day of March, A.D. 1925.

Bracken Lee
Notary Public.
Residing at Price Utah.

My Commission Expires:-
May 30th 1926

Owners Dedication

State of Utah }
County of Carbon } ss.

Be it Known by these presents; that John Migliaccio and Sylvia Migliaccio, husband and wife, the Owners of the lands described in the attached Engineers Certificate, do hereby dedicate to the public a perpetual easement and right of way over all streets as shown on this plat and by authority of said owners, this plat was made, named and designated.

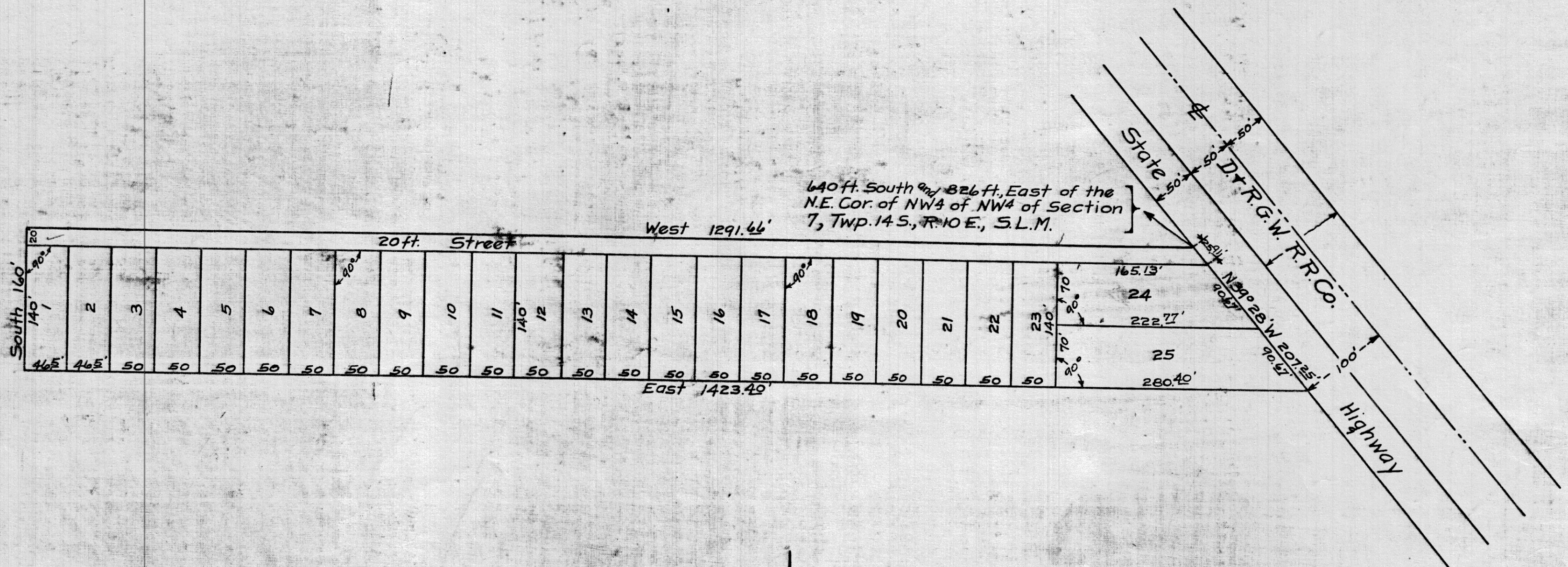
Signed:-
John Migliaccio
Sylvia Migliaccio

State of Utah }
County of Carbon } ss.

On this 9th day of March, A.D. 1925, personally appeared before me, John Migliaccio and Sylvia Migliaccio, husband and wife, the signers of the above instrument, who duly acknowledged to me that they executed the same.

Bracken Lee
Notary Public
Residing at Price Utah.

My Commission Expires:-
May 30, 1926



Entry No. 8948

FILED FOR RECORD

9:30 a

APR 24 1925

Plat of Plots 64

Jessie F. Sanford

Jessie Ranch

Approved and accepted by the Chairman and Board of County Commissioners, of Carbon County, Utah, in Regular Session this 6th day of April, A.D. 1925

John A. Mathis
Chairman of Board of County Commissioners.

Attest: H.C. Smith
County Clerk.

PLAT
OF
STATE HIGHWAY SUBDIVISION
F.S. Dunlevy
Engineer
Price Utah
March 6th 1925
Scale - 1" = 100'