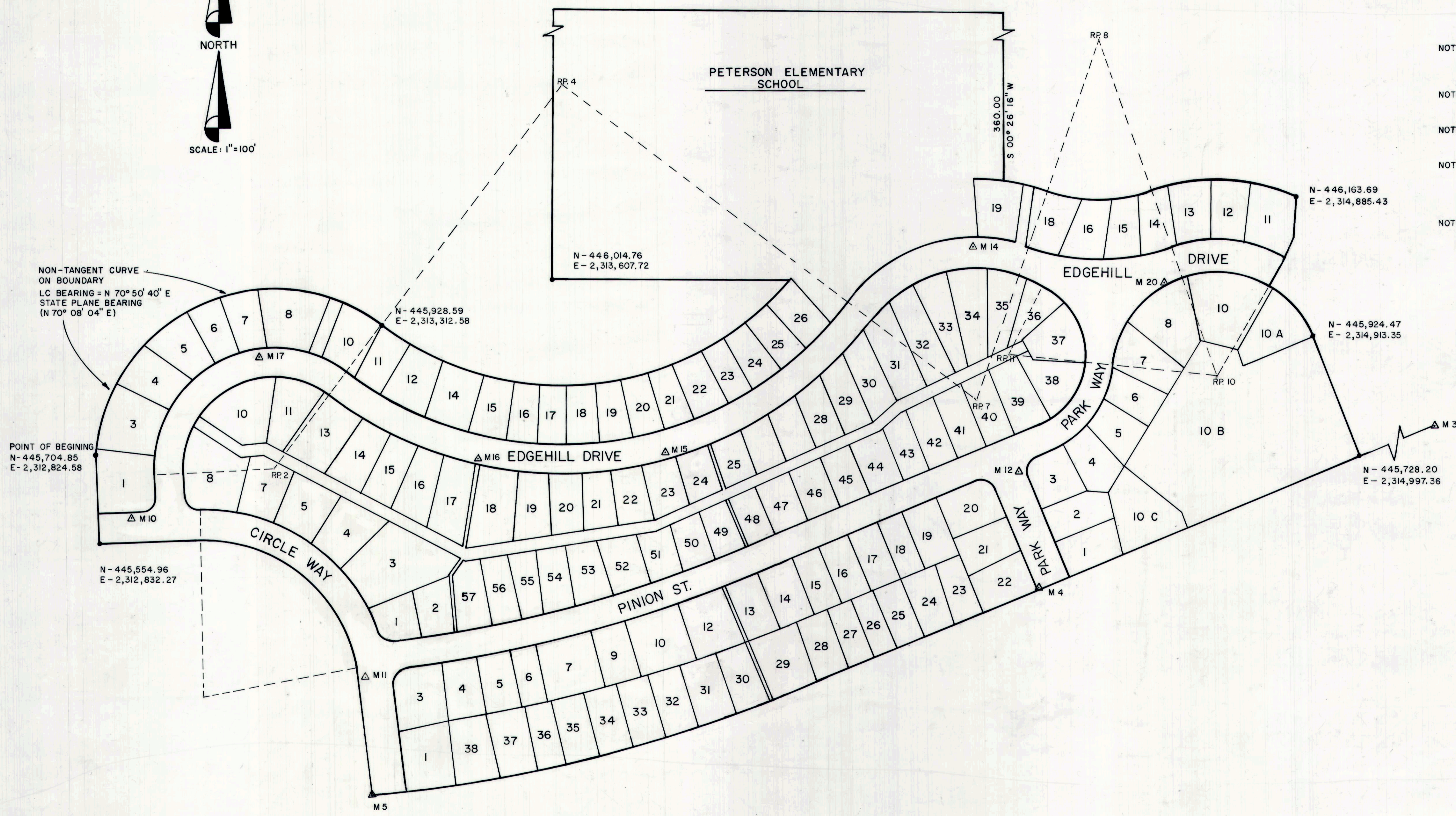




- NOTE 1 - THIS DRAWING IS TO BE WORKED WITH THE SUNNYSIDE SUBDIVISION - PLAT "B" RECORDED AT THE CARBON COUNTY COURTHOUSE RECORDED ON APRIL 19, 1977 - BOOK 3 OF PLATS, PAGE 164.
- NOTE 2 - BASIS OF BEARING IS THE UTAH STATE PLANE COORDINATE SYSTEM AS ESTABLISHED BY THE CARBON COUNTY SURVEYORS OFFICE: N 0° 07' 36" BETWEEN THE WEST 1/4 CORNER OF SECTION 6 AND THE NORTHWEST CORNER OF SECTION 6, T. 15 S., R. 14 E., S.L.B. & M.
- NOTE 3 - THE APPARENT BEARING USED ON THE RECORDED PLAT WAS N 0° 35' BETWEEN THE WEST 1/4 CORNER OF SECTION 6 AND THE NORTHWEST CORNER OF SECTION 6, T. 15 S., R. 14 E., S.L.B. & M.
- NOTE 4 - ROTATE BEARINGS 0° 42' 36" COUNTER CLOCKWISE ON RECORDED PLAT TO CORRESPOND WITH UTAH STATE PLANE COORDINATE SYSTEM.
- NOTE 5 - THE STATE PLANE COORDINATES SHOW PROJECT DATUM COORDINATES AND NOT SEA LEVEL DATUM COORDINATES.
- NOTE 6 - THE RECORDED SUBDIVISION IS LAID OUT AND MEASURED FROM THE EAST 1/4 CORNER OF SECTION 1, T. 15 S., R. 13 E., S.L.B. & M., INSTEAD OF THE WEST 1/4 CORNER OF SECTION 6, T. 15 S., R. 14 E., S.L.B. & M., AS SHOWN ON THE RECORDED PLAT.
- NOTE 7 - RECORDED PLAT MATHEMATICALLY CLOSED 0.081 IN THE NORTH AND 0.001 IN THE EAST AFTER USING CORRECTIONS SHOWN ON THIS PLAT



NON-TANGENT CURVE ON BOUNDARY  
 LC BEARING = N 70° 50' 40" E  
 STATE PLANE BEARING (N 70° 08' 04" E)

POINT	NORTH COORDINATE	EAST COORDINATE
Control Monument No. 3	445,900.86	2,315,405.72
" " No. 4	445,490.95	2,314,450.93
" " No. 5	445,125.33	2,313,308.17
" " No. 10	445,597.18	2,312,887.75
" " No. 11	445,327.16	2,313,294.75
" " No. 12	445,692.42	2,314,416.06
" " No. 13	445,069.40	2,314,896.16
" " No. 14	446,078.84	2,314,330.19
" " No. 15	445,716.38	2,313,803.90
" " No. 16	445,703.43	2,313,485.56
" " No. 17	445,877.49	2,313,105.57
" " No. 20	446,018.80	2,314,660.68
West 1/4 Cor. Sec. 6	444,877.77	2,310,760.69
East 1/4 Cor. Sec. 1	444,941.03	2,310,760.54
Radius Pt. for Curve No. 2	445,683.32	2,313,131.16
" " " No. 4	446,342.49	2,313,618.91
" " " No. 7	445,811.99	2,314,336.24
" " " No. 8	446,430.53	2,314,543.01
" " " No. 10	446,854.82	2,314,750.63
" " " No. 11	445,890.68	2,314,396.69
" " " No. 14	447,805.12	2,312,999.13

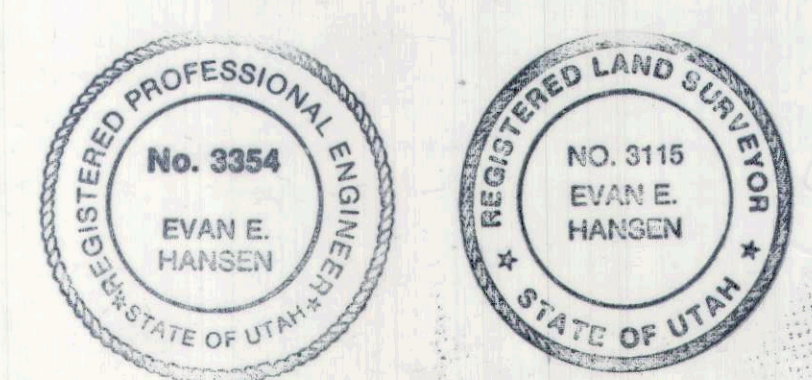
Monument No.	Bearing and Distance	To Corner	Lot No.	Block No.
No. 3	S 67° 04' 51" W   443.36'	SE	10 B	7
No. 4	N 82° 53' 23" W   6.14'	SE	22	6
No. 5	N 80° 53' 47" E   56.83'	SW	1	6
No. 10	N 82° 25' 37" W   58.55'	SW	1	4
No. 11	S 31° 23' 21" E   109.66'	SW	3	6
No. 12	S 28° 55' 35" E   74.52'	SW	3	7
No. 13	N 8° 43' 59" E   666.53'	SE	10 B	7
No. 14	N 20° 18' 55" E   11.01'	SW	19	7 A
No. 15	S 66° 11' 08" E   18.54'	NE	23	5
No. 16	S 27° 55' 58" W   12.67'	NE	17	5
No. 17	N 56° 55' 29" E   19.46'	SE	7	4
No. 20	N 81° 40' 46" E   40.60'	NE	8	7

△ INDICATES CONTROL MONUMENTS

**ENGINEER'S CERTIFICATE**

I, EVAN E. HANSEN, DO HEREBY CERTIFY THAT I AM A REGISTERED LAND SURVEYOR AND PROFESSIONAL ENGINEER HOLDING CERTIFICATES NO. 3115 AND NO. 3354 AS PRESCRIBED UNDER THE LAWS OF THE STATE OF UTAH. I FURTHER CERTIFY THAT I HAVE BEEN AUTHORIZED BY SUNNYSIDE CITY TO SET SURVEY CONTROL MONUMENTS AT THE LOCATIONS SHOWN ON THIS PLAT AND THEY ARE CORRECT TO THE BEST OF MY KNOWLEDGE.

*Evan E. Hansen* FEB 23, 1987  
 EVAN E. HANSEN DATE



SUNNYSIDE CITY CORPORATION  
 PRESENTED TO THE SUNNYSIDE CITY COUNCIL THIS 12<sup>th</sup> DAY OF March A.D., 1987, AT WHICH TIME THIS MONUMENTATION WAS APPROVED AND ACCEPTED.  
*Tom Anderson* ATTEST: CITY RECORDER  
*David Heath* MAYOR

RECORDED # 19999  
 STATE OF UTAH COUNTY OF CARBON RECORDED AND FILED AT THE REQUEST OF:  
SUNNYSIDE CITY  
 DATE 3/22/88 TIME 10:39 AM BOOK 4 of Plats PAGE 270  
 FEE \$ --- CARBON COUNTY RECORDER

**Empire Engineering & Land Surveying**  
 86 NORTH 200 EAST PRICE, UTAH 84501 PHONE (801) 637-7498  
 SUNNYSIDE REMONUMENTATION SUBDIVISION PLAT "B"  
 Drawn By: T.H. Approved By: E.E.H. Drawing No.: EESD-047 D  
 Date: JAN. 1987 Scale: 1"=100'