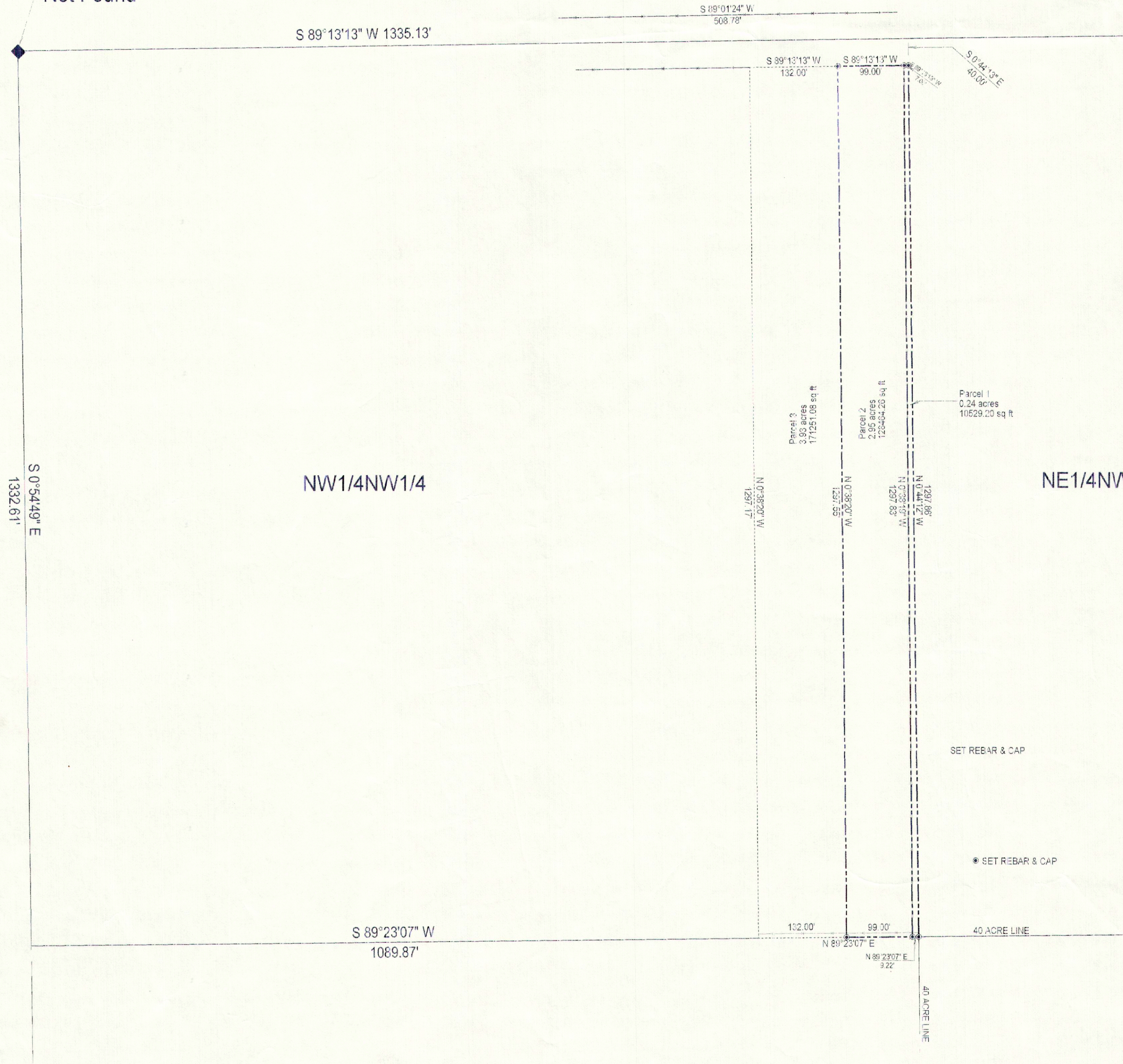


Northwest Corner of Section 8, Township 15 South, Range 11 East, Salt Lake Base and Meridian. Not Found

886725.8 465 P 220  
 Date 25-Nov-2008 11:16pm  
 Fee: 10.00 Check  
 SHARON MURDOCK, Recorder  
 Filed By: JB  
 For: MATTHEW COX  
 CARBON COUNTY CORPORATION

Narrative:

The Basis of Bearing for this survey was taken from the Line between the south 1/4 Corner (found aluminum cap in concrete base) and the Southeast Corner of Section 8 (found aluminum cap in concrete base), Township 15 South, Range 11 East, Salt Lake Base and Meridian. Said Bearing and Distance being N 89°53'13" E 2633.75 ft (calc.) 2634.64 (measured). Latitude and Longitude coordinates for the remaining corners were obtained from the Carbon County Surveyors Office.



Parcel 1

A parcel of Land situate in the NE1/4NW1/4 of Section 8, Township 15 South, Range 11 East, Salt Lake Base and Meridian  
 Beginning at a point on the South Right of Way line of State Route 6, said point being N 89°13'13" E 1335.13 ft. along the section line to the NW Corner of Said NE1/4NW1/4 and S 0°44'13" E 40.00 ft. along the 40 Acre Line from the Northwest Corner of said Section 8 and running thence S 0°44'13" E 1297.86 ft.; thence S 89°23'07" W 9.22 ft.; thence N 0°38'19" W 1297.83 ft. along an existing fence line; thence N 89°13'13" E 7.00 ft. along the South Right of Way Line of Said State Route 6 to the Point of Beginning. Containing 10,526 sq. ft. (0.24 acres).

Parcel 2

A parcel of Land situate in the NW1/4NW1/4 of Section 8, Township 15 South, Range 11 East, Salt Lake Base and Meridian  
 Beginning at a point on the South Right of Way line of State Route 6, said point being N 89°13'13" E 1335.13 ft. along the section line to the NE Corner of Said NW1/4NW1/4 and S 0°44'13" E 40.00 ft. along the 40 Acre Line and S 89°13'13" W 7.00 ft. along the South Right of Way Line of said SR-6 from the Northwest Corner of said Section 8 and running thence S 0°38'19" E 1297.83 ft.; thence S 89°23'07" W 99.00 ft.; thence N 0°38'20" W 1297.55 ft.; thence N 89°13'13" E 99.00 ft. along the South Right of Way Line of said SR-6 to the Point of Beginning. Containing 128,464.26 Sq. Ft. (2.95 Acres).

Parcel 3

A parcel of Land situate in the NW1/4NW1/4 of Section 8, Township 15 South, Range 11 East, Salt Lake Base and Meridian  
 Beginning at a point on the South Right of Way line of State Route 6, said point being N 89°13'13" E 1335.13 ft. along the section line and S 0°44'13" E 40.00 ft. along the 40 Acre Line and S 89°13'13" W 106.00 ft. Along the South Right of Way Line of said SR-6 from the Northwest of said Section 8 and running thence S 0°38'20" E 1297.55 ft.; thence S 89°23'07" W 132.00 ft.; thence N 0°38'20" W 1297.17 ft.; thence N 89°13'13" E 132.00 ft. along the South Right of Way Line of said SR-6 to the Point of Beginning. Containing 171,251.08 Sq. Ft. (3.93 Acres).

*Matthew A. Cox*  
 10/14/08  
 MATTHEW A. COX  
 CIVIL ENGINEER  
 LICENSE NO. 1014

Number	Revisions	Date

**BE**  
**BAIRD ENGINEERING LLC**  
 Civil Engineering and Land Surveying  
 1095 West 1870 North  
 Lehi Utah 84043  
 Phone 801-768-4001

PROPERTY SURVEY  
 FOR  
**MATHEW A. COX AND SHANTELE COX**  
 LOCATED IN SECTION 8, TOWNSHIP 15 SOUTH, RANGE 11 EAST, SALT LAKE BASE AND MERIDIAN  
 CARBON COUNTY, UTAH

PROPERTY SURVEY  
 FOR  
**MATHEW A. COX AND SHANTELE COX**  
 LOCATED IN SECTION 8, TOWNSHIP 15 SOUTH, RANGE 11 EAST, SALT LAKE BASE AND MERIDIAN  
 CARBON COUNTY, UTAH

SHEET 1 OF 1  
 PROJECT NUMBER