

LINE	BEARING	DISTANCE
L1	N70°08'22"E	293.58
L2	S52°05'39"E	128.72
L3	S81°01'09"E	178.53
L4	S01°40'02"E	33.61
L5	S84°00'12"E	46.83
L6	S51°22'19"E	29.49
L7	S33°40'04"W	48.76
L8	N76°01'19"E	95.88
L9	S74°23'22"E	81.62
L10	S88°14'03"E	129.52
L11	S59°23'38"E	211.09
L12	S63°46'52"E	161.16
L13	S11°22'29"E	49.16
L14	N79°55'22"E	87.16
L15	S73°27'35"E	120.11
L16	N75°53'30"E	39.67
L17	N48°43'02"E	85.10
L18	N84°35'08"E	56.02
L19	S64°34'53"E	32.16
L20	S47°33'36"E	178.83
L21	S89°53'39"E	65.55
L22	N69°07'38"E	45.86
L23	N47°41'13"E	82.39
L24	N02°16'14"E	27.23
L25	N24°40'08"E	57.43
L26	S37°03'11"E	111.92
L27	S52°41'59"E	82.56
L28	N68°24'22"E	74.17
L29	N57°17'33"E	25.44
L30	S66°18'56"E	39.88
L31	N77°08'23"E	21.00
L32	N05°30'55"W	28.20
L33	N60°52'00"E	30.18
L34	S86°24'12"E	51.12
L35	N49°22'25"E	26.94
L36	N79°15'05"E	29.58
L37	S43°44'04"E	17.74
L38	S20°09'42"W	29.69
L39	S51°47'07"E	23.86
L40	N21°07'50"E	49.46
L41	N54°59'12"E	29.67
L42	S74°33'08"E	43.98
L43	N85°13'35"E	90.94
L44	N64°18'51"E	85.27
L45	S71°33'21"E	19.65
L46	N68°40'45"E	16.87
L47	N41°14'20"E	29.98
L48	S66°33'20"E	100.85
L49	N87°49'28"E	40.15
L50	S79°41'53"E	78.66
L51	N64°23'28"E	39.41
L52	S18°01'50"E	29.11
L53	S78°14'25"E	12.91
L54	N51°09'07"E	29.56
L55	N85°13'55"E	30.26
L56	N71°12'42"E	87.74
L57	N87°13'32"E	34.25
L58	S17°53'47"W	42.95
L59	N81°58'50"E	33.54
L60	N11°34'11"E	45.01
L61	S63°51'38"E	67.69
L62	N76°23'20"E	55.14
L63	S63°49'25"E	79.42
L64	S77°01'26"E	47.47
L65	N49°51'29"E	58.96
L66	N32°49'41"E	153.83
L67	N70°38'10"E	173.29
L68	N37°01'22"E	88.07
L69	N79°48'24"E	76.77
L70	S55°26'19"E	77.73
L71	S29°42'40"E	78.43
L72	S20°17'43"E	75.07
L73	S44°50'34"E	238.60
L74	S56°37'22"E	100.73
L75	N64°18'28"E	59.89
L76	N28°40'08"E	58.28
L77	N50°58'06"E	118.41
L78	N25°10'22"E	63.79
L79	N13°41'26"W	86.32
L80	N16°04'39"E	15.37
L81	N59°23'49"E	84.43
L82	N40°01'38"E	194.88
L83	S71°57'39"E	112.17
L84	S12°43'02"E	127.61
L85	S15°49'59"W	79.52
L86	S04°32'21"W	46.02
L87	S22°24'21"E	96.02
L88	S44°31'53"E	95.88
L89	S88°04'42"E	138.29
L90	N66°49'22"E	85.96
L91	N19°55'17"E	53.39
L92	N63°10'52"E	24.43
L93	S88°07'23"E	257.13
L94	N75°52'21"E	88.82
L95	N51°41'24"E	54.11
L96	N16°26'23"E	21.82

**NARRATIVE**

THE PURPOSE OF THIS SURVEY IS TO LOCATE AND DESCRIBE THE NORTH HALF OF THE NORTH HALF OF SECTION 14, TOWNSHIP 14 SOUTH, RANGE 9 EAST, SALT LAKE BASE AND MERIDIAN, WHICH LIES SOUTH OF THE SOUTH BANK OF GORDON CREEK WASH. DIMENSIONS OF SAID SECTION 14 AS SHOWN HEREON ARE BASED ON FIELD MEASUREMENTS AS WELL AS COUNTY INFORMATION. THE SOUTH BANK OF GORDON CREEK WASH WAS LOCATED USING SURVEY GRADE G.P.S. EQUIPMENT.

**BOUNDARY DESCRIPTION**

THE NORTH HALF OF THE NORTH HALF OF SECTION 14, TOWNSHIP 14 SOUTH, RANGE 9 EAST, SALT LAKE BASE AND MERIDIAN, LYING SOUTH OF THE SOUTH BANK OF GORDON CREEK WASH, AND BEING MORE PARTICULARLY DESCRIBED AS FOLLOWS:

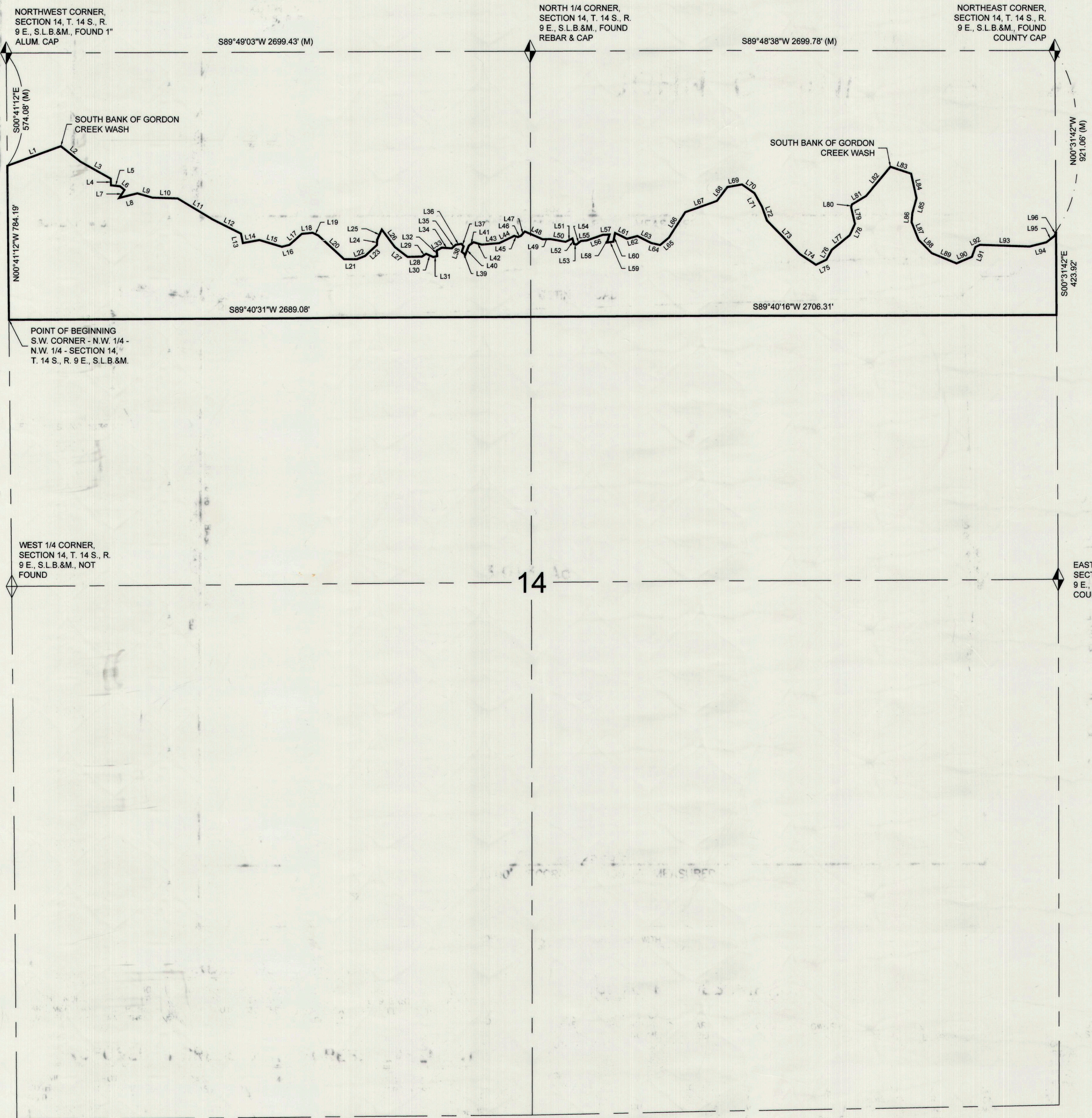
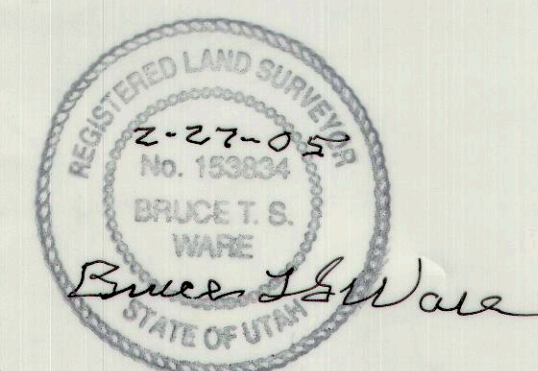
BEGINNING AT A POINT WHICH IS THE SOUTHWEST CORNER OF THE NORTHWEST QUARTER OF THE NORTHWEST QUARTER OF SAID SECTION 14, SAID POINT LIES 1358.27 FEET S00°41'12"E FROM THE NORTHWEST CORNER OF SAID SECTION 14, AND RUNNING THENCE N00°41'12"W ALONG SECTION LINE 784.19 FEET TO THE SOUTH BANK OF GORDON CREEK WASH; THENCE ALONG SAID SOUTH BANK OF GORDON CREEK WASH THE FOLLOWING NINETY SIX (96) COURSES:  
 N70°08'22"E 293.58 FEET; THENCE S52°05'39"E 128.72 FEET; THENCE S81°01'09"E 178.53 FEET; THENCE S01°40'02"E 33.61 FEET; THENCE S84°00'12"E 46.83 FEET; THENCE S51°22'19"E 29.49 FEET; THENCE S33°40'04"W 48.76 FEET; THENCE N76°01'19"E 95.88 FEET; THENCE S74°23'22"E 81.62 FEET; THENCE S88°14'03"E 129.52 FEET; THENCE S59°23'38"E 211.09 FEET; THENCE S63°46'52"E 161.16 FEET; THENCE S11°22'29"E 49.16 FEET; THENCE N79°55'22"E 87.16 FEET; THENCE S73°27'35"E 120.11 FEET; THENCE N75°53'30"E 39.67 FEET; THENCE N48°43'02"E 85.10 FEET; THENCE N84°35'08"E 56.02 FEET; THENCE S64°34'53"E 32.16 FEET; THENCE S47°33'36"E 178.83 FEET; THENCE S89°53'39"E 65.55 FEET; THENCE N69°07'38"E 45.86 FEET; THENCE N47°41'13"E 82.39 FEET; THENCE N02°16'14"E 27.23 FEET; THENCE N24°40'08"E 57.43 FEET; THENCE S37°03'11"E 111.92 FEET; THENCE S52°41'59"E 82.56 FEET; THENCE N68°24'22"E 74.17 FEET; THENCE N57°17'33"E 25.44 FEET; THENCE S66°18'56"E 39.88 FEET; THENCE N77°08'23"E 21.00 FEET; THENCE N05°30'55"W 28.20 FEET; THENCE N60°52'00"E 30.18 FEET; THENCE S86°24'12"E 51.12 FEET; THENCE N49°22'25"E 26.94 FEET; THENCE N79°15'05"E 29.58 FEET; THENCE S43°44'04"E 17.74 FEET; THENCE S20°09'42"W 29.69 FEET; THENCE S51°47'07"E 23.86 FEET; THENCE N21°07'50"E 49.46 FEET; THENCE N54°59'12"E 29.67 FEET; THENCE S74°33'08"E 43.98 FEET; THENCE N85°13'35"E 90.94 FEET; THENCE N64°18'51"E 85.27 FEET; THENCE S71°33'21"E 19.65 FEET; THENCE N68°40'45"E 16.87 FEET; THENCE N41°14'20"E 29.98 FEET; THENCE S66°33'20"E 100.85 FEET; THENCE N87°49'28"E 40.15 FEET; THENCE S79°41'53"E 78.66 FEET; THENCE N64°23'28"E 39.41 FEET; THENCE S18°01'50"E 29.11 FEET; THENCE S78°14'25"E 12.91 FEET; THENCE N51°09'07"E 29.56 FEET; THENCE N85°13'55"E 30.26 FEET; THENCE N71°12'42"E 87.74 FEET; THENCE N87°13'32"E 34.25 FEET; THENCE S17°53'47"W 42.95 FEET; THENCE N81°58'50"E 33.54 FEET; THENCE N11°34'11"E 45.01 FEET; THENCE S63°51'38"E 67.69 FEET; THENCE N76°23'20"E 55.14 FEET; THENCE S63°49'25"E 79.42 FEET; THENCE S77°01'26"E 47.47 FEET; THENCE N49°51'29"E 58.96 FEET; THENCE N32°49'41"E 153.83 FEET; THENCE N70°38'10"E 173.29 FEET; THENCE N37°01'22"E 88.07 FEET; THENCE N79°48'24"E 76.77 FEET; THENCE S55°26'19"E 77.73 FEET; THENCE S29°42'40"E 78.43 FEET; THENCE S20°17'43"E 75.07 FEET; THENCE S44°50'34"E 238.60 FEET; THENCE S56°37'22"E 100.73 FEET; THENCE N64°18'28"E 59.89 FEET; THENCE N28°40'08"E 58.28 FEET; THENCE N50°58'06"E 118.41 FEET; THENCE N25°10'22"E 63.79 FEET; THENCE N13°41'26"W 86.32 FEET; THENCE N16°04'39"E 15.37 FEET; THENCE N59°23'49"E 84.43 FEET; THENCE N40°01'38"E 194.88 FEET; THENCE S71°57'39"E 112.17 FEET; THENCE S12°43'02"E 127.61 FEET; THENCE S15°49'59"W 79.52 FEET; THENCE S04°32'21"W 46.02 FEET; THENCE S22°24'21"E 96.02 FEET; THENCE S44°31'53"E 95.88 FEET; THENCE S88°04'42"E 138.29 FEET; THENCE N66°49'22"E 85.96 FEET; THENCE N19°55'17"E 53.39 FEET; THENCE N63°10'52"E 24.43 FEET; THENCE S88°07'23"E 257.13 FEET; THENCE N75°52'21"E 88.82 FEET; THENCE N51°41'24"E 54.11 FEET; THENCE N16°26'23"E 21.82 FEET TO THE EAST LINE OF SAID SECTION 14; THENCE S00°31'42"E ALONG SAID SECTION LINE 423.92 FEET TO THE SOUTHEAST CORNER OF THE NORTHEAST QUARTER OF THE NORTHEAST QUARTER OF SAID SECTION 14; THENCE S89°40'16"W 2706.31 FEET ALONG THE SOUTH LINE OF THE NORTH HALF OF THE NORTHEAST QUARTER OF SAID SECTION 14 TO THE SOUTHWEST CORNER OF THE NORTHWEST QUARTER OF THE NORTHEAST QUARTER OF SAID SECTION 14; THENCE S89°40'31"W 2689.08 FEET ALONG THE SOUTH LINE OF THE NORTH HALF OF THE NORTHWEST QUARTER OF SAID SECTION 14 TO THE POINT OF BEGINNING.

CONTAINS 58.63 ACRES, MORE OR LESS.

**CERTIFICATE OF SURVEY**

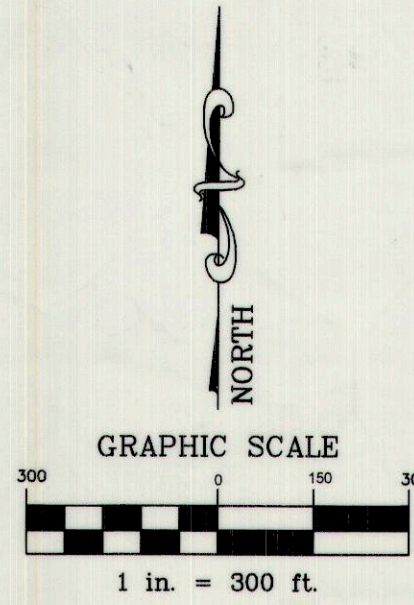
I, BRUCE T. S. WARE, DO HEREBY CERTIFY THAT I AM A REGISTERED LAND SURVEYOR, CERTIFICATE NO. 153834 AS PRESCRIBED BY THE LAWS OF THE STATE OF UTAH. I FURTHER CERTIFY THAT I HAVE MADE A SURVEY OF THE TRACT OF GROUND SHOWN AND THAT IT IS TRUE AND CORRECT TO THE BEST OF MY KNOWLEDGE. IT DOES NOT PURPORT TO SHOW ALL EASEMENTS OF RECORD, NOR IS IT PROOF OF OWNERSHIP.

DATE: 2-27-05  
 Bruce T. S. Ware, Mgr.  
 BRUCE T. S. WARE, MGR.



**LEGEND**

- SECTION LINE
- ◆ FOUND MONUMENT
- (M) MEASURED BEARING/DISTANCE



DRAWING RECORD		
NO.	DATE	DESCRIPTION
1	01-03-05	PLOTTED FOR REVIEW
2	01-18-05	PLOTTED FOR REVIEW
3	02-27-05	CORRECTED DESCRIPTION

SURVEY FOR:	
<b>STEVE GIACOLETTO</b>	
SPRING GLEN, CARBON COUNTY, UTAH	
SECTION 14, TOWNSHIP 14 S., RANGE 9 E., S. L. B. & M.	

WARE SURVEYING & ENGINEERING, L.L.C.	
G.P.S. & CONVENTIONAL SURVEYING - AUTOCAD MAPPING - CIVIL ENGINEERING	
Phone: 435-637-2620	2223 North 1200 West
Email: waresurveying@emerytelcom.net	Helper, Utah 84526