

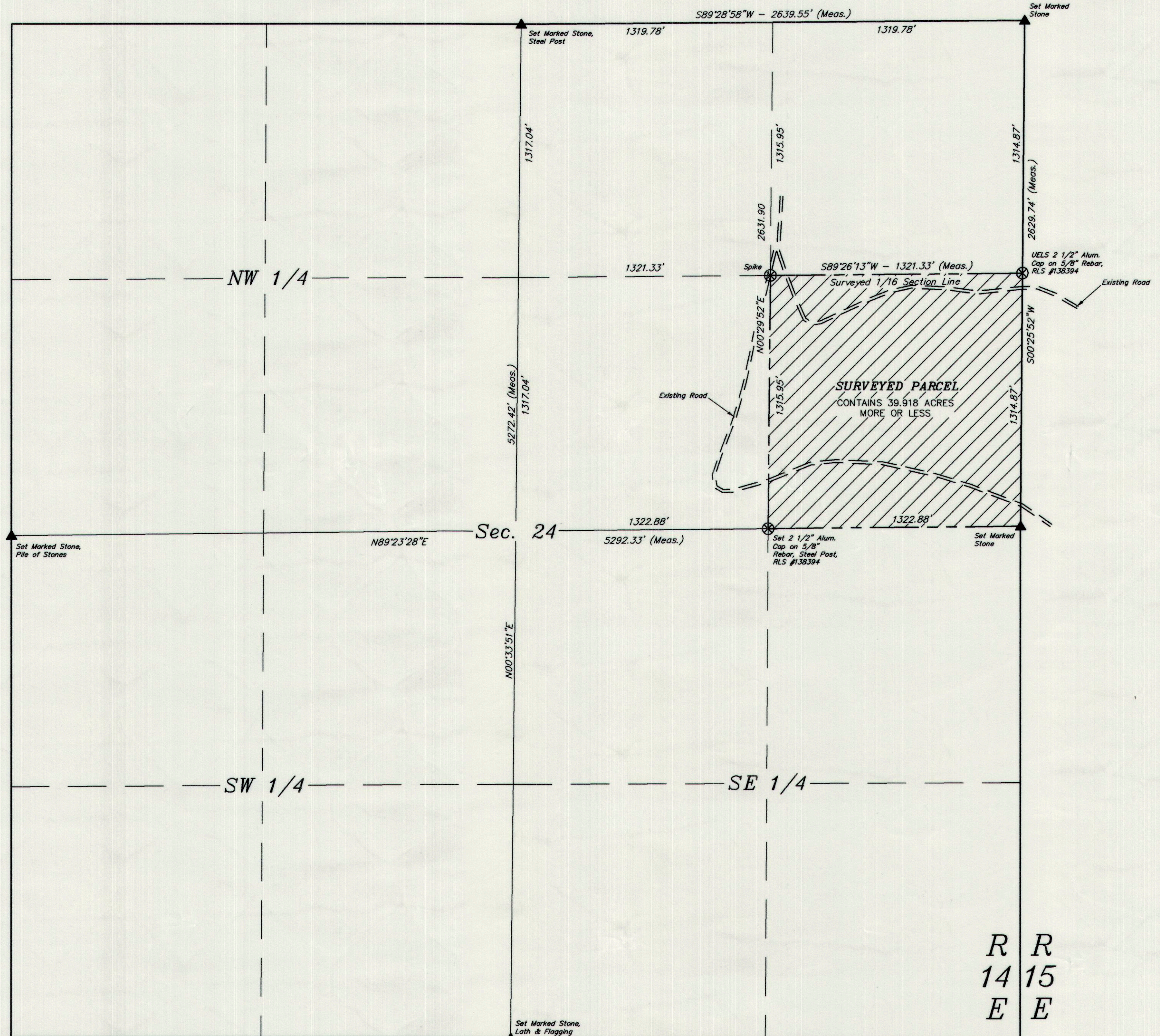
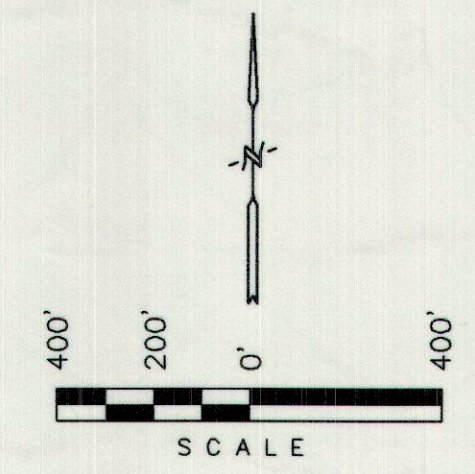
T12S, R14E, S.L.B.&M.

Ent 117394 Bk 619 Pg 400  
 Date: 24-MAY-2006 2:25PM  
 Fee: \$10.00 Check  
 Filed By: CM  
 SHARON MURDOCK, Recorder  
 CARBON COUNTY CORPORATION  
 For: UINTAH ENGINEERING

BILL BARRETT CORPORATION

PROPERTY SURVEY

LOCATED IN THE  
 SE 1/4 NE 1/4 OF  
 SECTION 24, T12S, R14E, S.L.B.&M.  
 CARBON COUNTY, UTAH



BASIS OF BEARINGS

BASIS OF BEARINGS IS A G.P.S. OBSERVATION.

ORIGINAL DESCRIPTION

SE 1/4 NE 1/4 OF SECTION 24, T12S, R14E, S.L.B.&M.

REVISED DESCRIPTION

NONE REQUIRED

SURVEYORS NARRATIVE

BILL BARRETT CORPORATION REQUESTED A SURVEY OF THE SE 1/4 NE 1/4 OF SECTION 24, T12S, R14E, S.L.B.&M. WE FOUND AND USED FOR SURVEY CONTROL THE NORTH 1/4, SOUTH 1/4, WEST 1/4, EAST 1/4 AND NORTHEAST SECTION CORNERS AS SHOWN ON THIS PLAT.

COUNTY SURVEYOR'S CERTIFICATE

THE CARBON COUNTY SURVEYOR HAS CHECKED THIS PLAT FOR FORM AND ADHERANCE TO THE STATE OF UTAH REQUIREMENTS FOR ITEMS TO BE ON A SURVEYOR'S PLAT FOR RECORDING WITH THE COUNTY SURVEYOR'S OFFICE, ON THIS \_\_\_\_\_ DAY OF \_\_\_\_\_, 20\_\_.

THE CARBON COUNTY SURVEYOR

FILE NO. \_\_\_\_\_ FEE PAID \$ \_\_\_\_\_ AT THE REQUEST OF UINTAH ENGINEERING AND LAND SURVEYING, THIS \_\_\_\_\_ DAY OF \_\_\_\_\_, 20\_\_.

CERTIFICATE

THIS IS TO CERTIFY THAT THE ABOVE PLAT WAS PREPARED FROM FIELD NOTES OF ACTUAL SURVEYS MADE BY ME OR UNDER MY SUPERVISION AND THAT THE SAME ARE TRUE AND CORRECT TO THE BEST OF MY KNOWLEDGE AND BELIEF.

*Robert H. King*  
 REGISTERED LAND SURVEYOR  
 REGISTRATION NO. 161319  
 STATE OF UTAH

REVISED: 05-01-06

U E I S UINTAH ENGINEERING & LAND SURVEYING  
 PHONE: (435) 789-1017  
 85 SOUTH 200 EAST - VERNAL, UTAH 84078

SCALE: 1" = 400'	DATE: 06-02-05
SURVEYED BY: S.H. L.M.	DRAWN BY: C.G.
WEATHER: WARM	FILE: 3 2 1 1 1

⊗ = PROPERTY CORNERS  
 ▲ = SECTION CORNERS LOCATED.

R R  
 14 15  
 E E