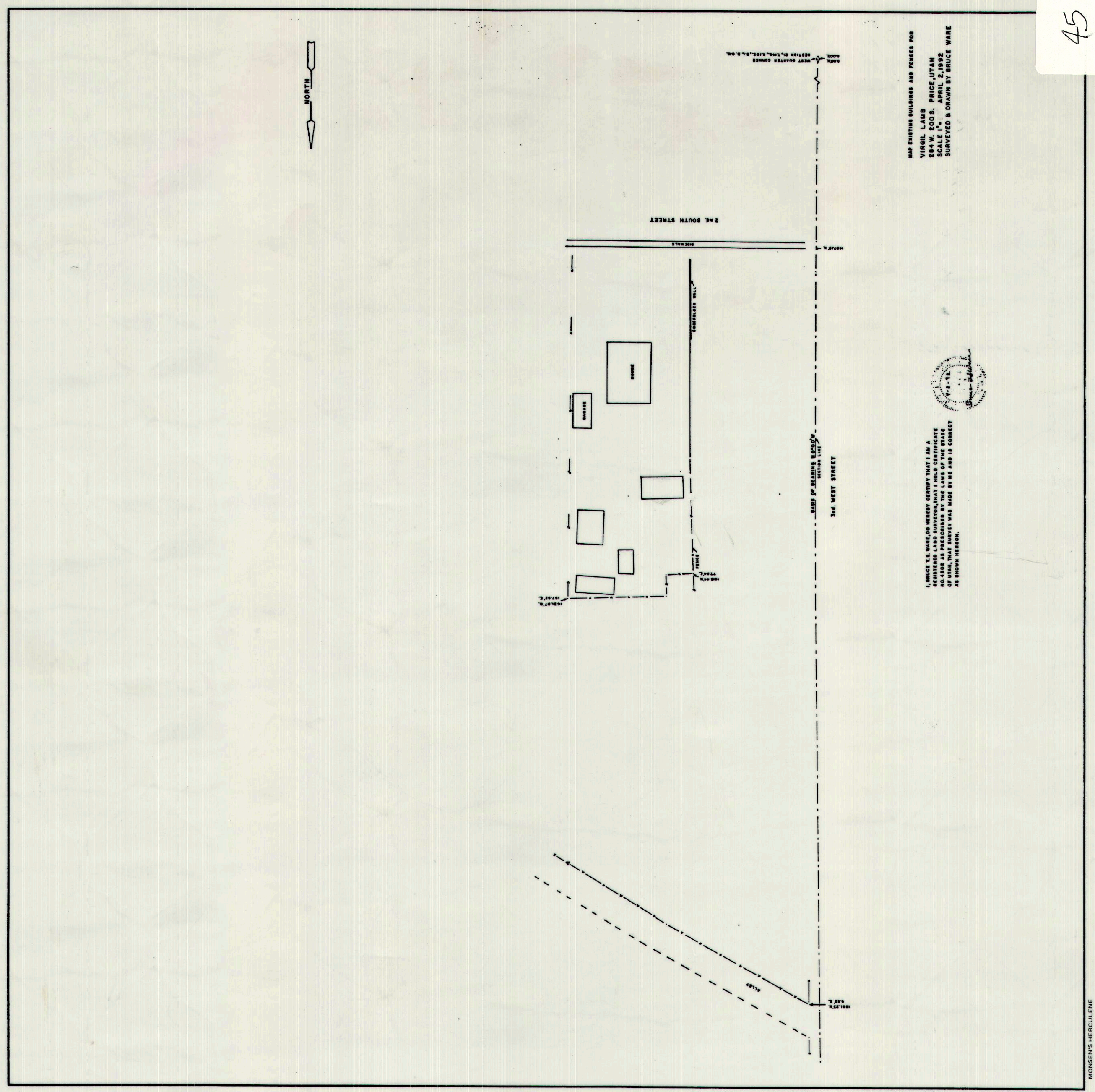
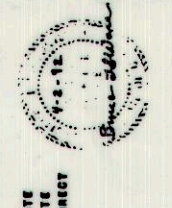


SECTION 21 TOWNSHIP 14 SOUTH, RANGE 10 EAST  
**CARBON COUNTY PLATS**



THE PLATTING OF THESE AND OTHER PLATS FOR  
VIRGIL LAMM  
224 N. 200 E., PRICE UTAH  
WAS MADE BY  
SURVEYED & DRAWN BY BRUCE WARE



THESE PLATS AND OTHER SURVEYS WERE MADE  
AND PLATTED BY THE LAND OF THE STATE  
OF UTAH UNDER THE ACT OF MARCH 10, 1896  
AS AMENDED.

Scale \_\_\_\_\_ feet - 1 inch

45

45