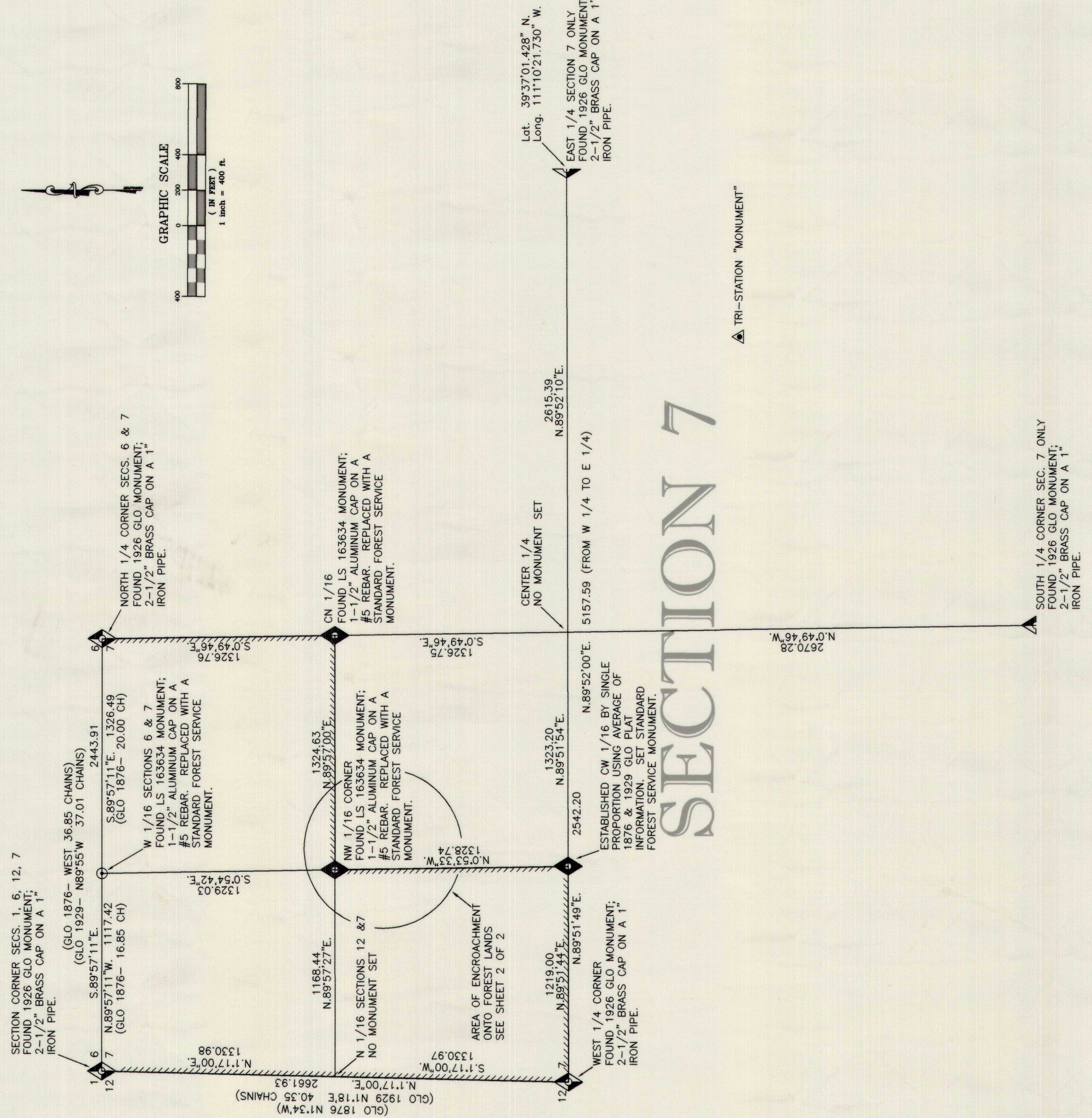


LS 1584322 N. 6659 P. 830
 U.S. DEPARTMENT OF AGRICULTURE
 Forest Service
 Fort Collins, Colorado
 Carbon County, Colorado
 Forest Service

ESRI FILE CORP. IRVINE, CA
 #471 7-14-7
 LOE2

DEPENDENT RESURVEY
 WITHIN SECTION 7, TOWNSHIP 14 SOUTH, RANGE 7 EAST
 SALT LAKE BASE & MERIDIAN



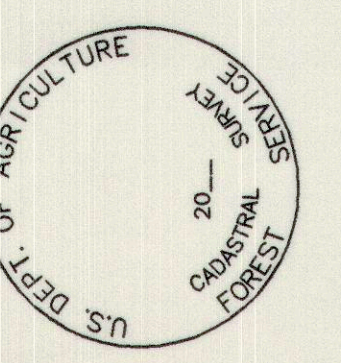
PURPOSE AND NARRATIVE OF SURVEY
 THIS SURVEY WAS MADE AT THE REQUEST OF THE USDA FOREST SERVICE, FOR THE PURPOSE OF REPERCUSSING THE CORNERS AND PROPERTY LINES WHICH DEFINE THE LANDS OWNED BY THE UNITED STATES OF AMERICA AND ADMINISTERED BY THE FOREST SERVICE, IN SECTION 7, TOWNSHIP 14 SOUTH, RANGE 7 EAST, SALT LAKE BASE & MERIDIAN, CARBON COUNTY, COLORADO. THE NORTHWEST QUARTER OF SECTION 7 WAS SUBDIVIDED PER THE MANUAL OF INSTRUCTIONS FOR SURVEYS OF LANDS BELONGING TO THE UNITED STATES. ORIGINAL CORNER MONUMENTS SET BY THE GENERAL LAND OFFICE IN 1929 WERE RECOVERED AND USED TO REPERCUSS THE SECTION INTERIOR SECTION CORNERS. MONUMENTS FOUND AND ACCEPTED AS CONFORMING TO "MANUAL" INSTRUCTIONS. THOSE CORNER MONUMENTS FOUND AND ACCEPTED AS NOT CONFORMING TO THE "MANUAL" INSTRUCTIONS WERE REPERCUSSED. A NEW CORNER MONUMENT AT THE CW 1/16 OF SECTION 7 WAS SET. MONUMENTS AT THE NW 1/16 AND SW 1/16 OF SECTION 7 WERE PROTECTED IN THIS SURVEY. LANDS WERE PROTECTED IN THIS SURVEY. ENCROACHMENTS ON TO FOREST SERVICE LANDS.

BASIS OF BEARING
 ALL BEARINGS ARE MEAN GEODETIC BEARINGS BASED ON THE NORTH AMERICAN DATUM. THE TRIANGULATION STATION "MONUMENT", PID KNO369, WITH 1994 MAD 83 COORDINATES:
 UTM: 1111100.00 E, 3383353.00 N
 LONG: 111° 10' 33.83353" W.

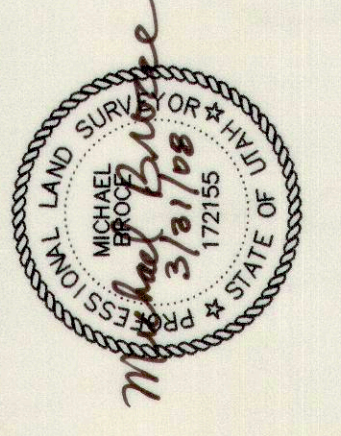
LEGEND
 PRIVATE USFS
 NATIONAL FOREST BOUNDARIES SURVEYED AND MARKED
 FOUND GENERAL LAND OFFICE SURVEY MONUMENT AS DESCRIBED, 1926
 SET STANDARD FOREST SERVICE MONUMENT AS DESCRIBED, 2007
 FOUND LS 163634 SURVEY MONUMENT AS DESCRIBED, 2006, NOT RE-MONUMENTED

- REFERENCES**
- 1876 GENERAL LAND OFFICE SURVEY, CONDUCTED BY J. FEWSON SMITH.
 - 1929 GENERAL LAND OFFICE SURVEY, CONDUCTED BY J.C. CLARK.
 - 2006 RECORD OF SURVEY BY LEE M. SWASEY, LS 163634.

NOTES
 FIELD WORK WAS PERFORMED USING A TRIMBLE 4700 GLOBAL POSITIONING SYSTEM UNIT.
 CORNER REPERCUSSION AND MONUMENTATION RECORDS FILED SEPARATELY.
 GEOGRAPHIC COORDINATES SHOWN ARE BASED ON THE 1983 NORTH AMERICAN DATUM.
 DISTANCES SHOWN ARE IN FEET.
 STANDARD FOREST SERVICE MONUMENTS ARE 3-1/2" DIAMETER ALUMINUM CAPS ON A 2" ALUMINUM BRASS SERVICE IDENTIFYING LOGO STAMPED ON CAPS.



CERTIFICATE OF SURVEY
 I, MICHAEL L. BROCK, U.S. No. 172155, STATE OF UTAH DO HEREBY CERTIFY THAT THE SURVEY REPRESENTED ON THIS PLAT WAS PERFORMED BY ME UNDER THE AUTHORITY OF THE FOREST SERVICE, U.S. DEPARTMENT OF AGRICULTURE, AND FOR THE EXCLUSIVE USE OF THE U.S. DEPARTMENT OF AGRICULTURE, FOREST SERVICE.



TROUGH SPRINGS RIDGE ENCROACHMENT SURVEY
 U.S. DEPARTMENT OF AGRICULTURE
 FOREST SERVICE
 REGION 4

DEPENDENT RESURVEY
 TOWNSHIP 14 SOUTH, RANGE 7 EAST, SLB&M
 SECTION 7
 CARBON AND EMERY COUNTIES, UTAH
 MANTI— LA SAL NATIONAL FOREST

SURVEYED BY: Michael Brock
 DATE: 3/8/08
 THIS SURVEY WAS MADE AT MY REQUEST AND ACCEPTED FOR NATIONAL FOREST MANAGEMENT PURPOSES.

DRAWN BY: M.L.B.
 DATE: 3/8/08
 FIELD BOOK: 1584322
 ENCROACHMENT SURVEY

FORREST SUPERVISOR: Howard G. Gault
 DATE: 3/11/08

COMPUTER FILE: TROUGH-SPRINGS_RIDGE.DWG
 PLAT No: 1 OF 2