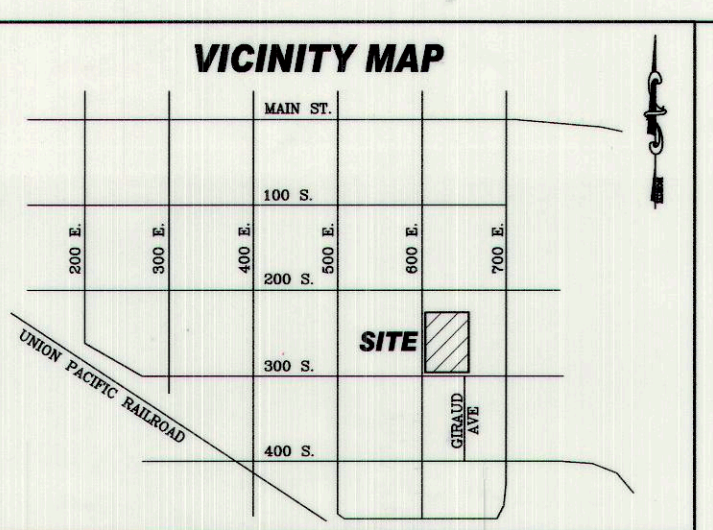
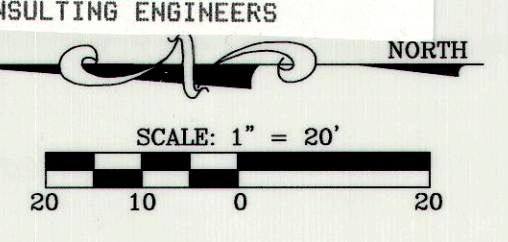
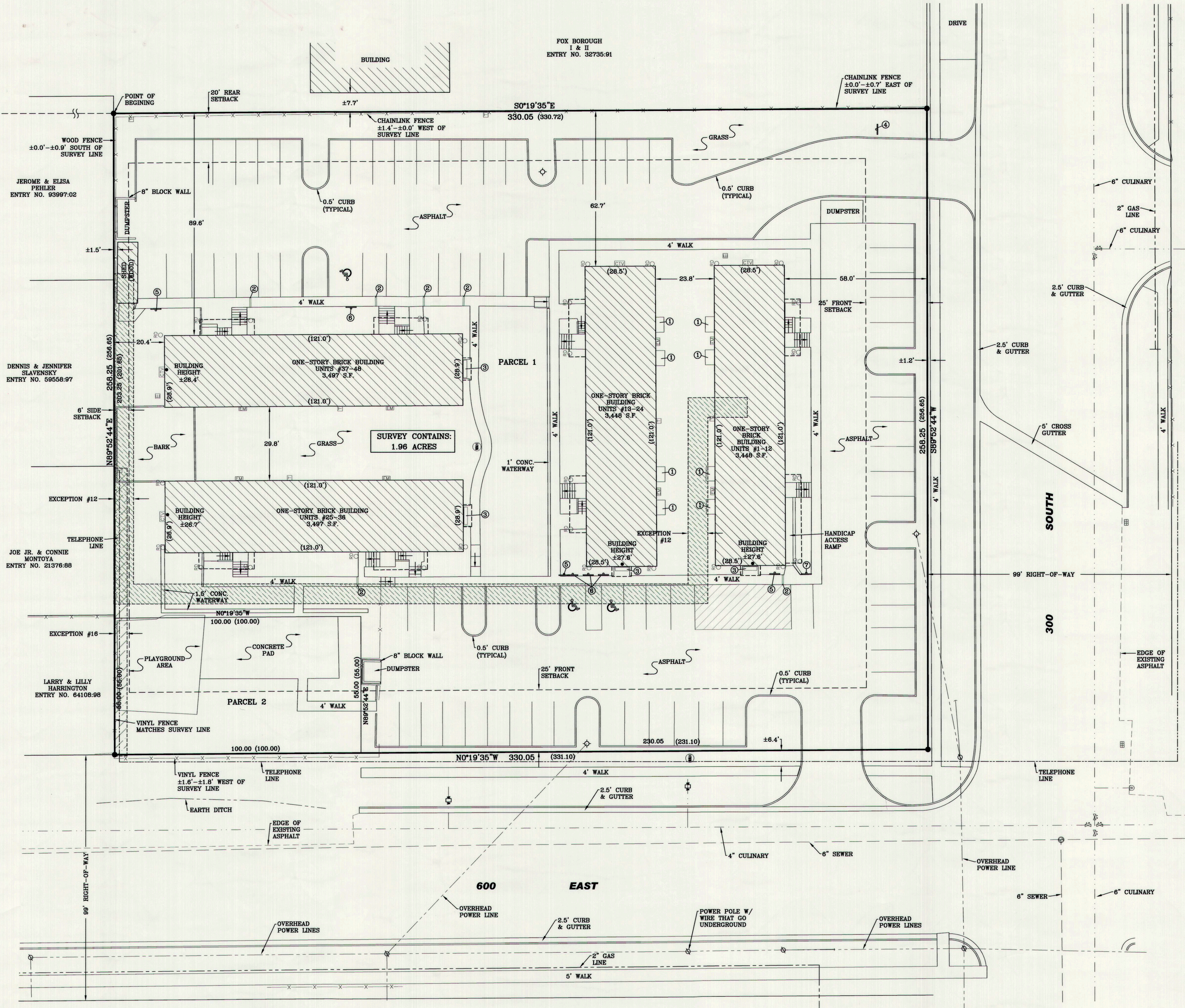


ALTA IACSM LAND TITLE SURVEY



16 15
 21 22
 437.87
 1,694.88 SOUTH
 NORTHEAST CORNER SECTION 21, T14S, R10E S.L.B.&M (FOUND 1980 1.5" ALUMINUM MONUMENT)
 5,309.90
 58°57'49"W (BASIS OF BEARING - SECTION LINE)
 258.25 (266.65)
 203.25 (201.65)
 258.25 (266.65)
 16 16
 20 21
 17 16
 20 21
 5,228.65
 58°09'19"W
 100.00 (100.00)
 100.00 (100.00)
 18 17
 19 20
 NORTHWEST CORNER SECTION 20, T14S, R10E S.L.B.&M (FOUND 1.5" ALUMINUM MONUMENT, UNREADABLE)



KEY NOTES

- ① WOOD DECK
- ② SIDEWALK DRAIN
- ③ MAIL BOXES
- ④ SPEED LIMIT SIGN
- ⑤ NO PARKING SIGN
- ⑥ HANDICAP PARKING SIGN
- ⑦ MANAGER PARKING ONLY

LEGEND OF EXISTING FEATURES

WATER LINE	---
SEWER LINE	---
FIRE HYDRANT	⊙
CATCH BASIN	⊙
WATER VALVE	⊙
ELECTRIC BOX	⊙
TELEPHONE BOX	⊙
LIGHT POLE	⊙
SEWER MANHOLE	⊙
UTILITY POLE, GUY WIRE	⊙
ROOF DRAIN	⊙
WATER METER	⊙
WATER MANHOLE	⊙
ELECTRIC METERS	⊙
CABLE TV	⊙
STEPS (DOWN)	⊙
RECORD DIMENSIONS	(XXX.XX)
SET REBAR & CAP	⊙
FOUND SECTION CONTROL	⊙
FENCE LINE	---

REVISION BY DATE
 PROJECT: 08-0236
 SCALE: 1" = 20'
 DESIGNER: RWTH
 DATE: 04/22/2008
 SHEET 1/2
 3302 No. Main St.
 Spanish Fork, UT 84660
 801 709 0555
 ALTA IACSM LAND TITLE SURVEY
 BLOCK 14, PRICE TOWNSHIP SURVEY
 IN THE NE 1/4 SECTION 21, T14S, R10E, S.L.B.&M, IN PRICE, UTAH
 PROJECT: 08-0236
 SCALE: 1" = 20'
 DESIGNER: RWTH
 DATE: 04/22/2008
 SHEET 1/2
 STREET ADDRESS
 635 EAST 300 SOUTH