

TREE DATA

TREE #	CROWN ELEVATION	TYPE
T-1	5975.3	DECIDUOUS
T-2	5985.5 (GROUP)	DECIDUOUS
T-3	6006.5	DECIDUOUS
T-4	6006.5	DECIDUOUS
T-5	6040.0	DECIDUOUS
T-6	6001*	DECIDUOUS
T-7	6001*	DECIDUOUS
T-8	5986*	DECIDUOUS
T-9	6000*	DECIDUOUS
T-10	5986*	DECIDUOUS
T-11	5986*	DECIDUOUS
T-12	5988*	DECIDUOUS
T-13	5985*	DECIDUOUS
T-14	6023.6	DECIDUOUS
T-15	5995*	DECIDUOUS
T-16	5975*	SHRUB
T-17	5992.4	DECIDUOUS
T-18	5991*	DECIDUOUS
T-19	5989.3	DECIDUOUS
T-20	5980*	DECIDUOUS
T-21	5994*	DECIDUOUS
T-22	5995.0	DECIDUOUS
T-23	5990.9	DECIDUOUS
T-24	5981.7	DECIDUOUS
T-25	5975*	DECIDUOUS
T-26	5976*	DECIDUOUS
T-27	5973*	DECIDUOUS
T-28	6008.6	DECIDUOUS
T-29	5980*	SHRUB

*ESTIMATED ELEVATION
 NOTE: THIS TABLE INCLUDES TREES OUTSIDE THE AREA OF THE PRINTED DRAWING.

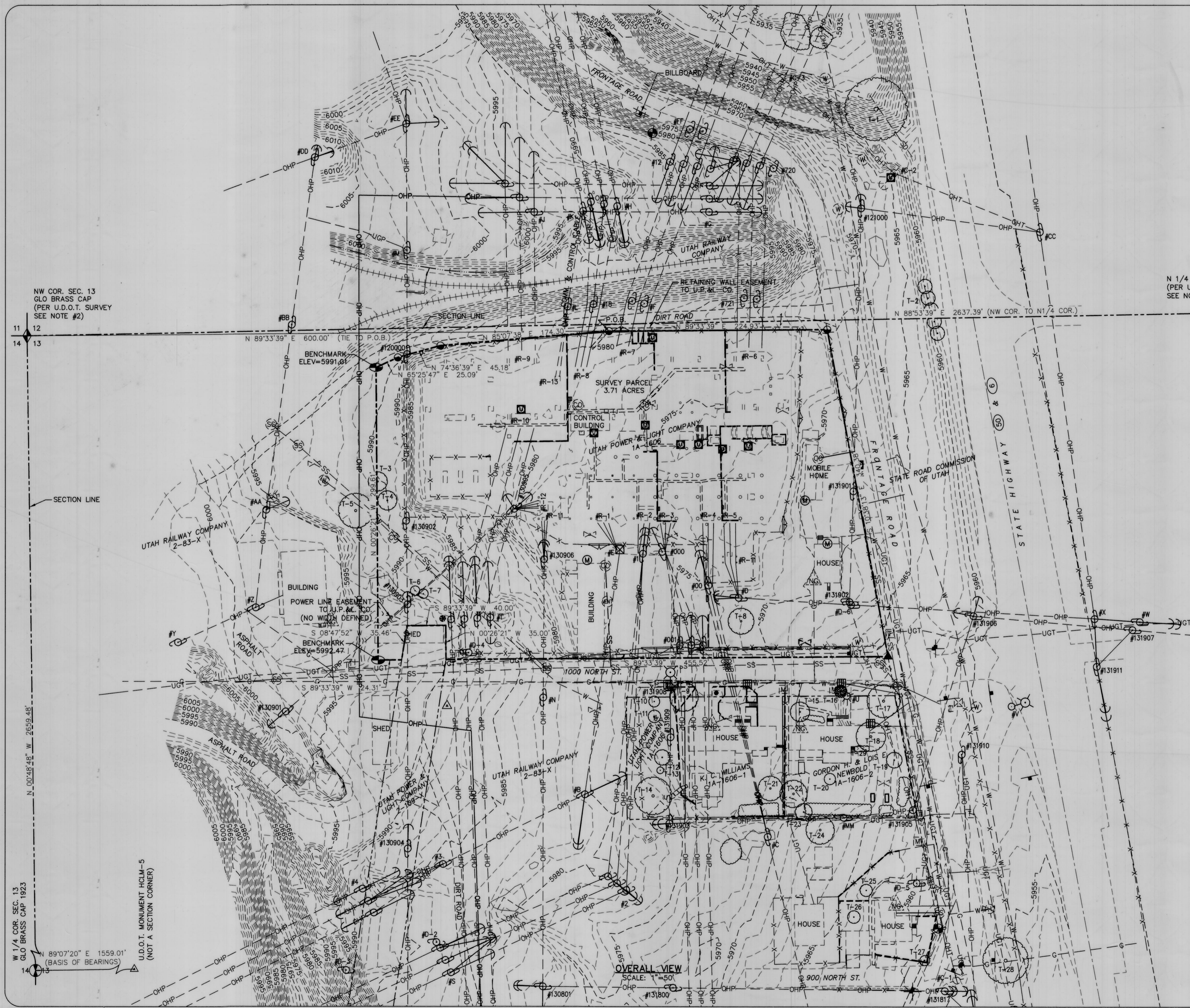
NOTE:
 SEE SHEET 3 OF RECORD OF SURVEY FOR LEGEND, NARRATIVE, DESCRIPTION, AND STRUCTURE DATA.

TORGERSEN ENGINEERING
 379 WEST PAHVANT DRIVE
 RICHFIELD, UTAH 84701
 (435) 893-0081

AMENDED RECORD OF SURVEY FOR
PACIFICORP
HELPER SUBSTATION
 LOCATED AT 1000 NORTH HWY. 50&6 FRONTAGE ROAD
 HELPER, CARBON COUNTY, UTAH
 LOCATED IN THE NW1/4 NW1/4 OF SECTION 13, TOWNSHIP 13 SOUTH, RANGE 9 EAST, SLB&M

SURVEY BY: JAS	DRAWING BY: GTT	CHECKED BY: RKT/MLP
DATE: 4-07-2011	DATE: 4-08-2011	DATE: 10-03-2011

SHEET 1 OF 3 1103RMP-HS_001



NW COR. SEC. 13
 GLO BRASS CAP
 (PER U.D.O.T. SURVEY
 SEE NOTE #2)

W 1/4 COR. SEC. 13
 GLO BRASS CAP 1923
 89°07'20" E 1559.01'
 (BASIS OF BEARINGS)

U.D.O.T. MONUMENT HCLM-5
 (NOT A SECTION CORNER)

OVERALL VIEW
 SCALE: 1"=50'