

# Mud Creek Restoration Project Conservation Easement Record of Survey

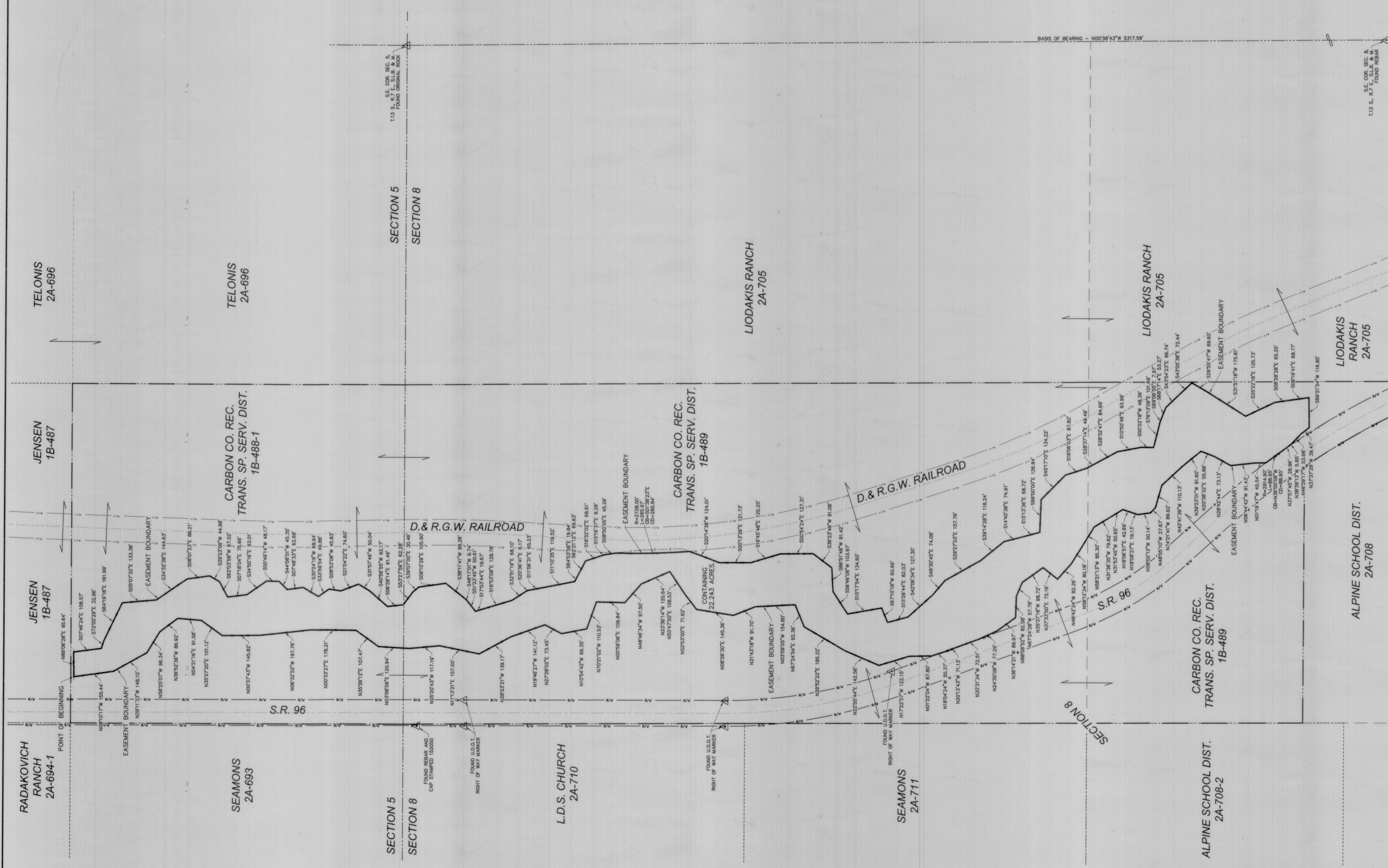
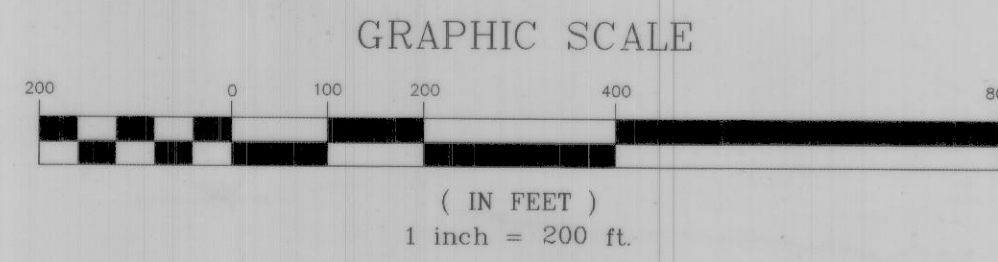
Located in Sections 5, and 8, T.13 S., R.7 E., S.L.B. & M.

Scofield Town, Carbon County, Utah

2011

### LEGEND

- SURVEYED EASEMENT BOUNDARY LINE
- - - SECTION LINE
- - - QUARTER SECTION LINE
- 40 ACRE LINE
- APPROXIMATE HIGHWAY RIGHT OF WAY LINE
- APPROXIMATE CENTERLINE OF RAILROAD
- APPROXIMATE RAILROAD RIGHT OF WAY LINE
- - - EXISTING FENCE
- △ FOUND SURVEY MARKER AS NOTED



### CONSERVATION EASEMENT DESCRIPTION

SCOFIELD EASEMENT DESCRIPTION  
 BEGINNING AT A POINT LOCATED NORTH 1282.43 FEET AND WEST 2453.12 FEET FROM THE  
 SOUTHEAST CORNER OF SECTION 5, T.13 S., R.7 E., S.L.B. & M., SAID POINT OF BEGINNING  
 BEING LOCATED IN AN EXISTING FENCE LINE, THENCE ALONG SAID EXISTING FENCE LINE THE  
 FOLLOWING COURSES: N89°06'28"E 95.64 FEET, S07°46'24"E 108.57 FEET, S72°00'29"E 32.96  
 FEET, S64°19'18"E 161.99 FEET, S05°07'32"E 133.38 FEET, S34°32'38"E 144.63 FEET,  
 S08°01'23"E 88.21 FEET, S29°23'09"W 44.98 FEET, S62°03'58"W 67.02 FEET, S07°18'04"E 75.66  
 FEET, S34°50'16"E 93.01 FEET, S00°49'14"W 48.17 FEET, S44°08'51"W 45.35 FEET, S07°48'33"E  
 62.68 FEET, S30°24'19"W 68.94 FEET, S33°59'54"E 46.86 FEET, S08°53'08"W 45.83 FEET,  
 S21°04'22"E 74.60 FEET, S31°07'49"W 50.04 FEET, S40°58'55"W 92.17 FEET, S06°28'14"E 61.49  
 FEET, S53°27'59"E 62.28 FEET, S39°07'00"E 30.46 FEET, S08°10'29"E 105.90 FEET, S38°11'41"W  
 99.26 FEET, S48°17'01"W 9.74 FEET, S51°23'45"W 50.61 FEET, S17°03'44"E 19.67 FEET,  
 S16°53'08"E 128.78 FEET, S32°51'19"E 68.10 FEET, S20°38'41"E 6.17 FEET, S11°06'31"E 65.23  
 FEET, S11°03'35"E 119.52 FEET, S64°03'58"E 19.84 FEET, S62°21'12"E 69.63 FEET, S18°32'02"E  
 68.61 FEET, S15°16'37"E 9.29 FEET, AND S08°50'05"E 45.29 FEET MORE OR LESS TO THE  
 WESTERLY RIGHT OF WAY LINE OF THE D. & R.G.W. RAILROAD; THENCE LEAVING SAID EXISTING  
 FENCE LINE AND ALONG SAID RAILROAD RIGHT OF WAY LINE, AROUND A 2728.00 FOOT RADIUS  
 NON TANGENT CURVE TO THE RIGHT, 285.97 FEET (CHORD BEARS S01°38'23"E 285.84 FEET)  
 MORE OR LESS TO SAID EXISTING FENCE LINE; THENCE LEAVING SAID RAILROAD RIGHT OF WAY  
 LINE AND ALONG SAID EXISTING FENCE LINE THE FOLLOWING COURSES: S2014'38"W 124.01  
 FEET, S0013'28"E 121.73 FEET, S16°45'48"E 120.25 FEET, S00°54'24"E 127.31 FEET,  
 S38°23'49"W 91.08 FEET, S86°51'48"W 91.42 FEET, S56°48'08"W 103.97 FEET, S101°75'4"E  
 134.60 FEET, S67°10'18"W 60.66 FEET, S15°26'44"E 82.03 FEET, S42°06'34"E 127.30 FEET,  
 S49°30'45"E 74.08 FEET, S29°27'03"E 157.76 FEET, S39°14'28"E 118.24 FEET, S14°40'38"E 74.91  
 FEET, S15°13'36"E 68.72 FEET, S88°00'00"E 126.84 FEET, S45°17'10"E 134.22 FEET, S18°06'03"E  
 87.82 FEET, S28°37'14"E 49.49 FEET, S28°32'47"E 84.69 FEET, S10°50'46"E 93.99 FEET,  
 S00°21'18"W 48.39 FEET, S78°13'09"E 101.69 FEET, S89°06'55"E 7.97 FEET, S68°17'4"E 53.27  
 FEET, S43°54'23"E 66.74 FEET, S43°05'38"E 72.44 FEET, S29°55'47"W 69.60 FEET, S31°51'18"W  
 175.81 FEET, S25°22'18"E 125.73 FEET, S08°28'28"E 65.25 FEET, S08°19'41"E 68.77 FEET,  
 S89°21'54"W 116.85 FEET, N37°37'29"W 39.47 FEET, N46°29'17"W 53.98 FEET, N38°39'13"W 5.85  
 FEET, AND N37°57'45"W 28.96 FEET MORE OR LESS TO THE EASTERLY RIGHT OF WAY LINE OF  
 S.R. 96; THENCE LEAVING SAID EXISTING FENCE LINE AND ALONG SAID HIGHWAY RIGHT OF WAY  
 LINE, AROUND A 2914.90 FOOT RADIUS NON TANGENT CURVE TO THE LEFT, 88.95 FEET (CHORD  
 BEARS N36°00'08"W 88.95 FEET) MORE OR LESS TO SAID EXISTING FENCE LINE; THENCE  
 LEAVING SAID HIGHWAY RIGHT OF WAY LINE AND ALONG SAID EXISTING FENCE LINE THE  
 FOLLOWING COURSES: N01°19'47"W 45.54 FEET, N06°14'42"W 91.43 FEET, N28°42'44"E 73.13  
 FEET, N20°38'32"E 55.89 FEET, N39°23'01"W 91.60 FEET, N42°41'39"W 110.13 FEET, N74°21'41"W  
 89.62 FEET, N48°05'10"W 27.67 FEET, N08°02'12"W 50.14 FEET, N18°08'27"E 19.13 FEET,  
 N18°06'57"E 42.69 FEET, N31°53'45"W 50.65 FEET, N31°36'35"W 79.62 FEET, N58°21'13"W 85.30  
 FEET, N58°23'34"W 80.18 FEET, N48°42'24"W 82.26 FEET, N37°33'50"E 72.16 FEET, N35°37'18"W  
 98.72 FEET, N67°24'28"W 57.78 FEET, N88°09'52"W 82.58 FEET, N36°14'21"W 89.97 FEET, AND  
 N24°35'08"W 77.29 FEET MORE OR LESS TO THE EASTERLY RIGHT OF WAY LINE OF S.R. 96;  
 THENCE LEAVING SAID EXISTING FENCE LINE AND ALONG SAID HIGHWAY RIGHT OF WAY LINE  
 N20°31'34"W 72.51 FEET, MORE OR LESS TO SAID EXISTING FENCE LINE; THENCE LEAVING SAID  
 HIGHWAY RIGHT OF WAY LINE AND ALONG SAID EXISTING FENCE LINE THE FOLLOWING COURSES:  
 N2011'34"W 71.13 FEET, N18°04'24"W 50.37 FEET, N01°22'04"W 87.80 FEET, N17°22'57"W 122.15  
 FEET, N22°55'44"E 142.56 FEET, N29°52'22"E 185.22 FEET, N67°24'54"E 92.36 FEET,  
 N03°09'05"W 154.80 FEET, N21°43'18"W 91.70 FEET, N08°26'30"E 145.36 FEET, N52°03'00"E  
 71.62 FEET, N59°47'50"E 108.53 FEET, N23°26'14"W 120.64 FEET, N48°46'34"W 97.50 FEET,  
 N00°59'08"E 109.84 FEET, N70°21'02"W 110.53 FEET, N10°54'42"W 99.35 FEET, N27°28'02"E  
 73.45 FEET, N19°46'27"W 141.12 FEET, N28°23'21"W 139.17 FEET, N11°13'21"E 157.50 FEET,  
 N05°20'43"W 117.19 FEET, N03°08'09"E 120.94 FEET, N35°26'12"E 107.47 FEET, N00°33'27"E  
 178.21 FEET, N06°32'52"W 197.76 FEET, N00°37'43"W 145.82 FEET, N35°27'20"E 101.12 FEET,  
 N04°21'16"E 91.58 FEET, N36°52'36"W 86.92 FEET, N58°25'07"W 96.34 FEET, N29°11'33"W 148.10  
 FEET, N08°01'17"W 155.44 FEET TO THE POINT OF BEGINNING.  
 CONTAINING 22.243 ACRES.

### NOTES

1. THE PURPOSE OF THIS SURVEY WAS TO LOCATE EXISTING FENCE LINES AS SHOWN HEREON AND TO PREPARE A CONSERVATION EASEMENT DESCRIPTION TO BE USED BY THE CLIENT.
2. BASIS OF BEARING USED WAS N00°38'43"W BETWEEN THE SOUTHEAST CORNER OF SECTION 8, T.13 S., R.7 E., S.L.B. & M., AND THE SOUTHEAST CORNER OF SECTION 5, T.13 S., R.7 E., S.L.B. & M.

### SURVEYOR'S CERTIFICATE

I, TREVOR R. GADD, A REGISTERED LAND SURVEYOR AS PRESCRIBED BY THE LAWS OF THE STATE OF UTAH, HOLDING CERTIFICATE #343639, CERTIFY THAT THE SURVEY SHOWN HEREON WAS MADE UNDER MY DIRECTION.

I FURTHER CERTIFY THAT THIS PLAT CORRECTLY SHOWS THE DIMENSIONS OF THE PROPERTY SURVEYED.

TREVOR R. GADD, L.S.#343639  
 DATE: 01/26/2011  
 STATE OF UTAH

PREPARED BY:  
**Jones & DeMille Engineering**  
 1535 South 100 West - Richfield, Utah 84701  
 Phone (435) 896-8266 - Fax (435) 896-8268  
 www.jonesanddemille.com

PROJECT NUMBER: 1002-066 FILE NAME: I:\PROJECTS\1002-066\SCOFIELD DWR EASEMENT\DWG\SCOFIELD DWR EASEMENT.dwg  
 SURVEYED BY: J.W.J. DRAWN BY: T.R.G. LAST EDIT: 3/3/2011

## Mud Creek Restoration Project Conservation Easement

Scofield Town, Carbon County, Utah  
 Scale: 1" = 200'

945#