

Ent 813886 & 764 1 375  
 Date: 15-FEB-2012 4:55:08PM  
 Fee: \$10.00 Cash  
 Filed By: 08  
 VIKKI BARNETT, Recorder  
 CARBON COUNTY CORPORATION  
 For: BEN GRIMES

N 1/4 CORNER  
 SECTION 24 T13S, R9E  
 SLB&M  
 FOUND

NE CORNER  
 SECTION 24 T13S, R9E  
 SLB&M  
 CARBON COUNTY  
 RECORDS

N89°47'49"E  
 539.39'

PROPERTY LINE  
 TYPICAL

SECTION LINE BASIS OF BEARING N89°47'49"E

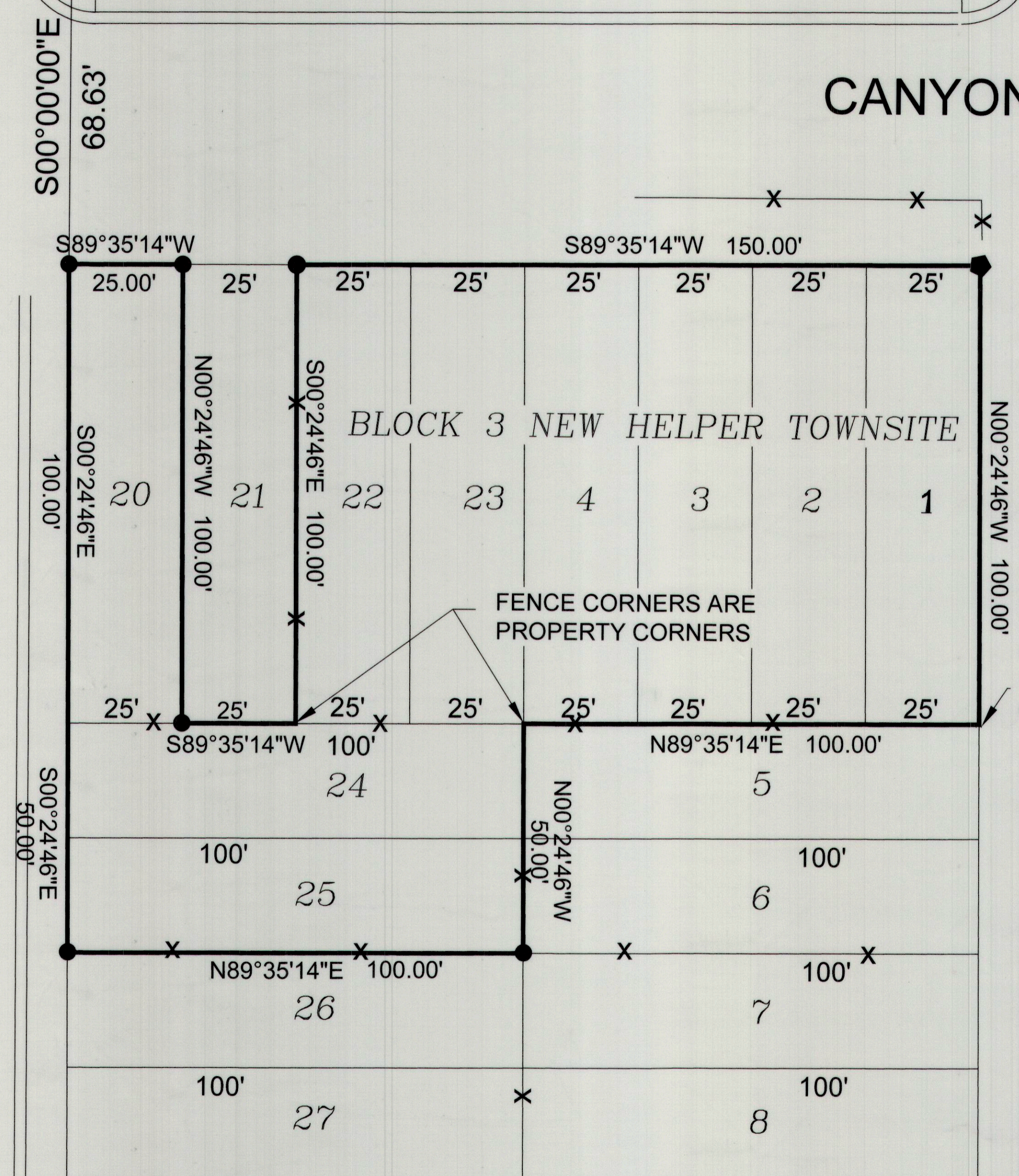
CANYON ROAD

PROPERTY LINE  
 TYPICAL

CURB & GUTTER  
 TYPICAL

ROOSEVELT ST.

DUCHESNE ST.



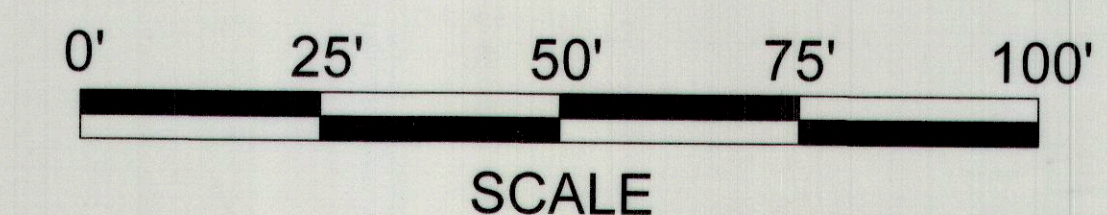
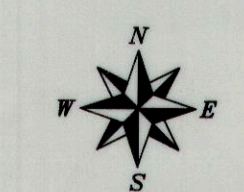
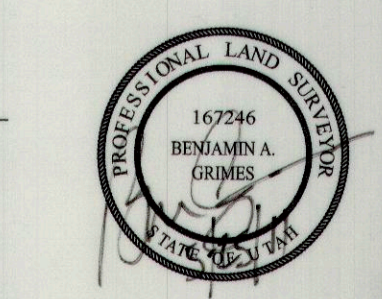
**PURPOSE OF SURVEY**  
 TO DETERMINE PORPRTY LINES FOR LOTS 1, 2, 3, 4, 20, 22, 23, 24 & 25, NEW HELPER TOWNSITE BLOCK 3.

**LEGAL DESCRIPTION**  
 ALL OF LOTS 1, 2, 3, 4, 20, 22, 23, 24 & 25, NEW HELPER TOWNSITE BLOCK 3. SUBJECT TO ANY EASEMENTS OR ENCOMBRANCES ON RECORD AS OF THIS DATE.

- LEGEND**
- SET REBAR/CAP #167246
  - ◆ SET MAG NAIL
  - ✕ FENCES

**SURVEYORS CERTIFICATE**  
 I, BENJAMIN A. GRIMES, BEING A REGISTERED LAND SURVEYOR IN THE STATE OF UTAH, HOLDING LICENSE NUMBER 167246, DO CERTIFY THAT THIS PLAT REPRESENTS A TRUE AND ACCURATE SURVEY OF THE LOTS SHOWN HEREON.

BENJAMIN A. GRIMES P.L.S. NO 167246 5/25/11 DATE



BENJAMIN GRIMES P.L.S.  
 795 WEST TWIN PEAKS RD.  
 ELMO, UT 84521  
 (435) 953-2304

DESIGNED B.G. 3  
 DRAFTED B.G. 2  
 CHECKED 1  
 DATE MAY 25, 2011 NO. DATE

NO.	DATE	REVISIONS

SCALE AS SHOWN  
 BY APVD.

JOHN JONES SURVEY - HELPER, UTAH  
 LOCATED IN NORTHEAST QUARTER SECTION 24, T13S, R9E, SLB&M

SHEET 1

#555

Lot 1, 2, 3, 4, 20, 22, 23, 24 & 25, New Helper Townsite Block 3  
 #555  
 BEN GRIMES