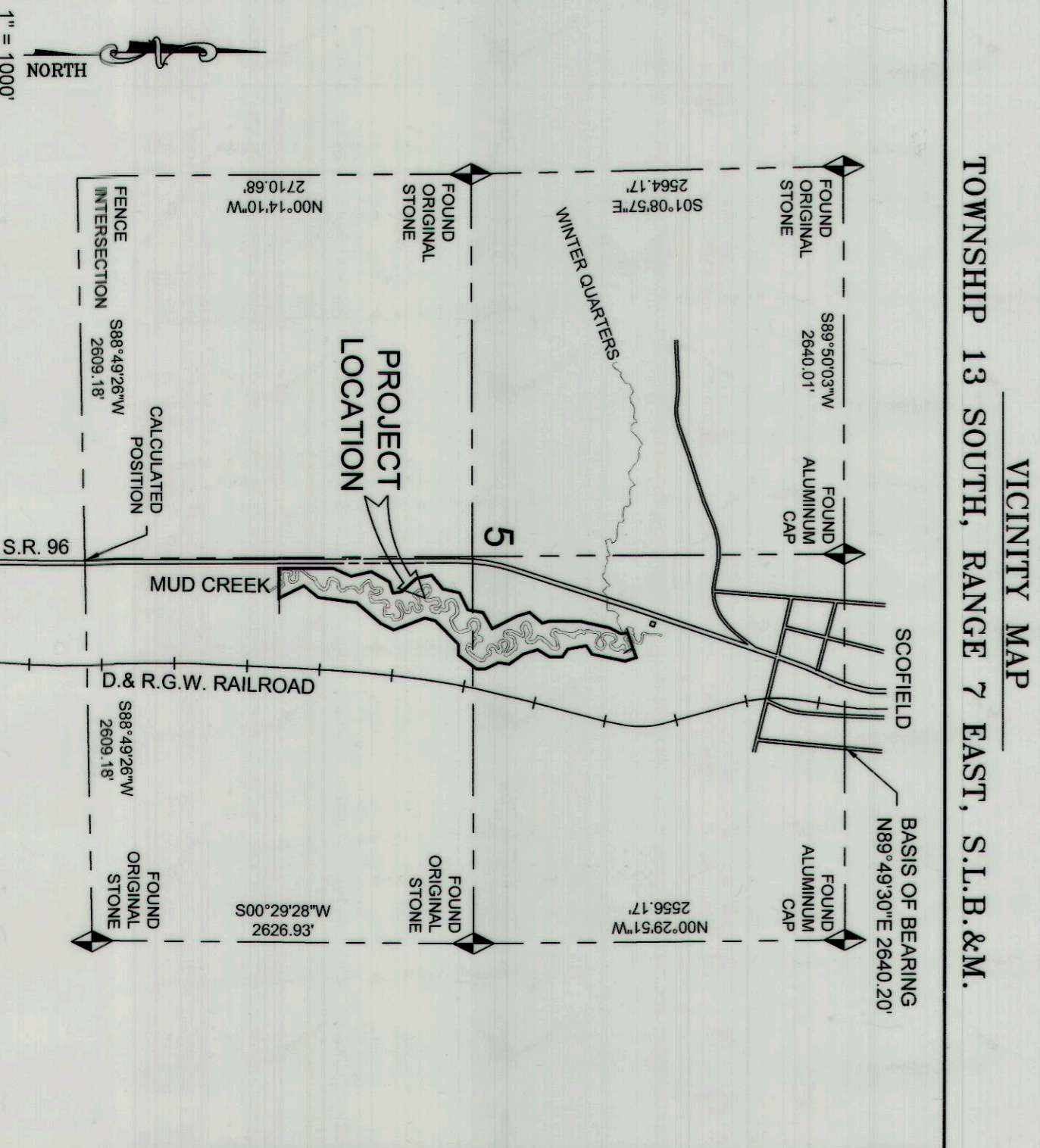
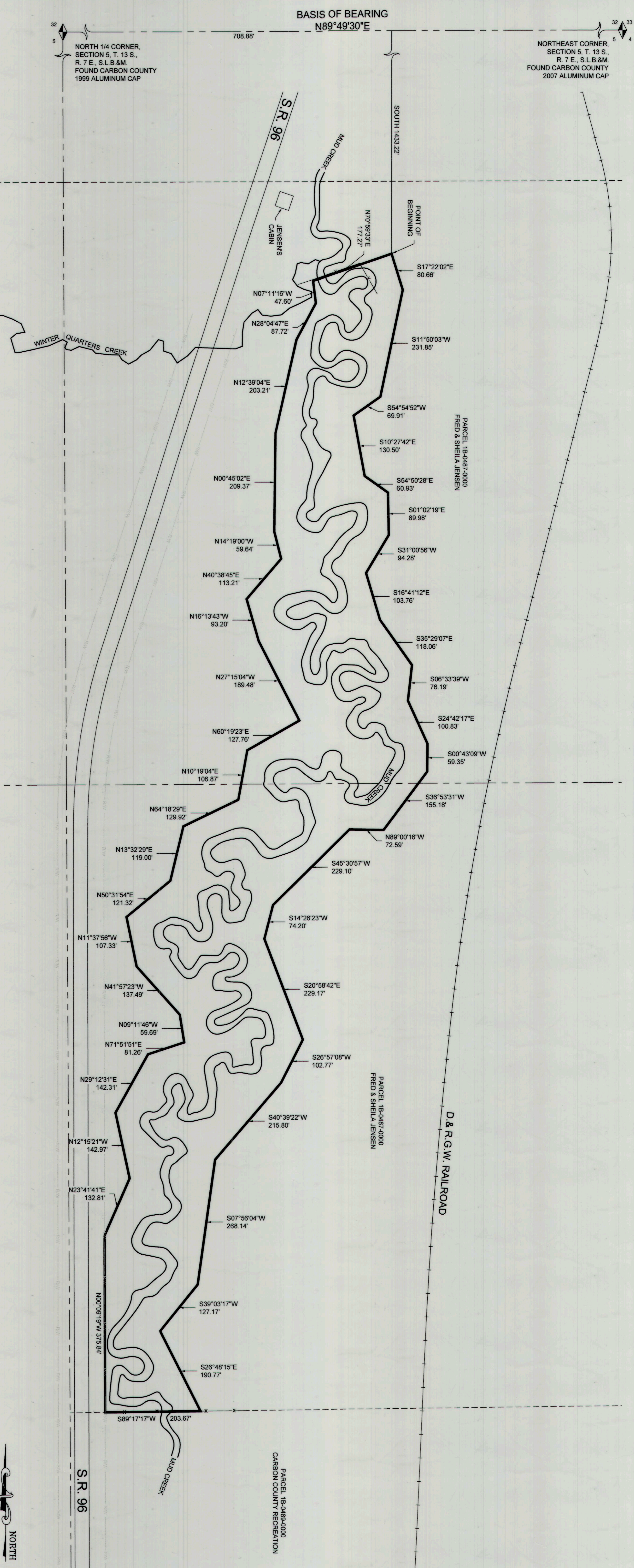


CARBON WATER CONSERVANCY DISTRICT  
MUD CREEK - JENSEN PROPERTY



**NARRATIVE**

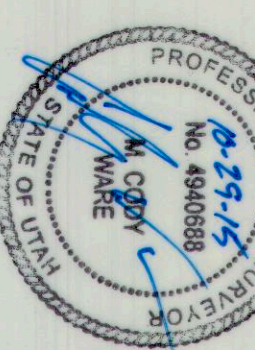
THE PURPOSE OF THIS SURVEY IS TO LOCATE AND PREPARE A BOUNDARY DESCRIPTION OF AN AREA THAT COVERS APPROXIMATELY 50 FEET ON EACH SIDE OF THE EDGE OF THE MUD CREEK CHANNEL OVER THE JENSEN PROPERTY IN SECTION 5, TOWNSHIP 13 SOUTH, RANGE 7 EAST, SALT LAKE BASE AND MERIDIAN. THE BASIS OF BEARING USED FOR THIS SURVEY IS NORTH 89°49'30" EAST BETWEEN THE NORTH QUARTER CORNER AND THE NORTHEAST CORNER OF SAID SECTION 5.

**CERTIFICATE OF SURVEY**

I, M. CODY WARE, DO HEREBY CERTIFY THAT I AM A REGISTERED LAND SURVEYOR, CERTIFICATE NO. 484888 AS PRESCRIBED BY THE UTAH PROFESSIONAL LAND SURVEYING ACT, CHAPTER 2, SECTION 10-1-1, UTAH CODES ANNOTATED. THE SURVEY IS TRUE AND CORRECT TO THE BEST OF MY KNOWLEDGE. IT DOES NOT PURPORT TO SHOW ALL EASEMENTS OF RECORD, NOR IS IT A PROOF OF OWNERSHIP.

DATE: 12/27/2015

M. CODY WARE



**BOUNDARY DESCRIPTION**

A PORTION OF THE EAST HALF OF SECTION 5, TOWNSHIP 13 SOUTH, RANGE 7 EAST, SALT LAKE BASE AND MERIDIAN, CARBON COUNTY, STATE OF UTAH, AND BEING MORE PARTICULARLY DESCRIBED AS FOLLOWS:

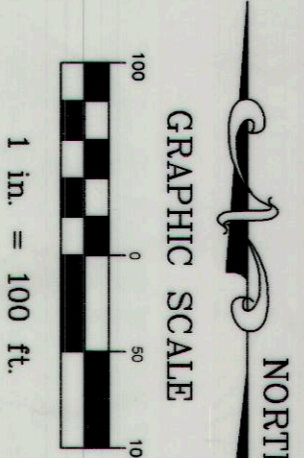
BEGINNING AT A POINT WHICH LIES 708.88 FEET NORTH, 89°49'30" EAST ALONG SECTION LINE AND 1433.22 FEET SOUTH FROM THE NORTH QUARTER CORNER OF SAID SECTION 5, AND RUNNING THENCE S17°22'02"E 80.66 FEET; THENCE S11°50'03"W 231.85 FEET; THENCE S17°22'02"E 80.66 FEET; THENCE S14°50'28"E 60.93 FEET; THENCE S01°02'19"E 89.98 FEET; THENCE S31°00'56"W 94.28 FEET; THENCE S16°41'12"E 103.76 FEET; THENCE S35°29'07"E 118.06 FEET; THENCE S06°33'39"W 76.19 FEET; THENCE S24°42'17"E 100.83 FEET; THENCE S00°43'09"W 59.35 FEET; THENCE S36°53'31"W 155.18 FEET; THENCE N89°00'16"W 72.59 FEET; THENCE S45°30'57"W 229.10 FEET; THENCE S14°26'23"W 74.20 FEET; THENCE S20°58'42"E 229.17 FEET; THENCE S26°57'08"W 102.77 FEET; THENCE S40°39'22"W 215.80 FEET; THENCE S07°56'04"W 268.14 FEET; THENCE S39°03'17"W 127.17 FEET; THENCE S26°48'15"E 190.77 FEET; THENCE S89°17'17"W 203.67 FEET; THENCE N00°09'19"W 375.94 FEET; THENCE N12°15'21"E 142.97 FEET; THENCE N23°14'14"E 132.81 FEET; THENCE N09°11'46"W 59.69 FEET; THENCE N71°51'51"E 81.26 FEET; THENCE N29°12'31"E 142.31 FEET; THENCE N41°57'23"W 137.49 FEET; THENCE N11°37'56"W 107.33 FEET; THENCE N50°31'54"E 121.32 FEET; THENCE N13°32'29"E 119.00 FEET; THENCE N64°18'29"E 129.92 FEET; THENCE N10°19'04"E 106.87 FEET; THENCE N60°19'23"E 127.76 FEET; THENCE N16°13'43"W 93.20 FEET; THENCE N40°38'45"E 113.21 FEET; THENCE N14°19'00"W 59.64 FEET; THENCE N00°45'02"E 209.37 FEET; THENCE N12°39'04"E 203.21 FEET; THENCE N28°04'47"E 87.72 FEET; THENCE N07°11'16"W 47.60 FEET; THENCE N70°59'33"E 177.27 FEET; THENCE S17°22'02"E 80.66 FEET TO POINT OF BEGINNING.

THENCE S04°54'52"W 69.91 FEET; THENCE S10°27'42"E 130.50 FEET; THENCE S54°50'28"E 60.93 FEET; THENCE S01°02'19"E 89.98 FEET; THENCE S31°00'56"W 94.28 FEET; THENCE S16°41'12"E 103.76 FEET; THENCE S35°29'07"E 118.06 FEET; THENCE S06°33'39"W 76.19 FEET; THENCE S24°42'17"E 100.83 FEET; THENCE S00°43'09"W 59.35 FEET; THENCE S36°53'31"W 155.18 FEET; THENCE N89°00'16"W 72.59 FEET; THENCE S45°30'57"W 229.10 FEET; THENCE S14°26'23"W 74.20 FEET; THENCE S20°58'42"E 229.17 FEET; THENCE S26°57'08"W 102.77 FEET; THENCE S40°39'22"W 215.80 FEET; THENCE S07°56'04"W 268.14 FEET; THENCE S39°03'17"W 127.17 FEET; THENCE S26°48'15"E 190.77 FEET; THENCE S89°17'17"W 203.67 FEET; THENCE N00°09'19"W 375.94 FEET; THENCE N12°15'21"E 142.97 FEET; THENCE N23°14'14"E 132.81 FEET; THENCE N09°11'46"W 59.69 FEET; THENCE N71°51'51"E 81.26 FEET; THENCE N29°12'31"E 142.31 FEET; THENCE N41°57'23"W 137.49 FEET; THENCE N11°37'56"W 107.33 FEET; THENCE N50°31'54"E 121.32 FEET; THENCE N13°32'29"E 119.00 FEET; THENCE N64°18'29"E 129.92 FEET; THENCE N10°19'04"E 106.87 FEET; THENCE N60°19'23"E 127.76 FEET; THENCE N16°13'43"W 93.20 FEET; THENCE N40°38'45"E 113.21 FEET; THENCE N14°19'00"W 59.64 FEET; THENCE N00°45'02"E 209.37 FEET; THENCE N12°39'04"E 203.21 FEET; THENCE N28°04'47"E 87.72 FEET; THENCE N07°11'16"W 47.60 FEET; THENCE N70°59'33"E 177.27 FEET TO THE POINT OF BEGINNING.

CONTAINS 13.693 ACRES.

**LEGEND**

- DESCRIBED BOUNDARY
- SECTION LINE
- - - INTERIOR SECTION LINE/PARCEL LINE
- - - FENCE LINE
- ~ ~ ~ APPROXIMATE RAILROAD CENTERLINE
- - - APPROXIMATE S. R. 96 RIGHT-OF-WAY
- FOUND MONUMENT



DRAWING RECORD		
NO.	DATE	DESCRIPTION
1	06-25-15	DATE OF SURVEY
2	06-28-15	PLOTTED FOR REVIEW
3	10-28-15	PLOTTED WHYAN

**SURVEY FOR:**  
CARBON WATER CONSERVANCY DISTRICT  
MUD CREEK - JENSEN PROPERTY  
SECTION 5, TOWNSHIP 13 S., RANGE 7 E., S. L. B. & M.  
SCOPE: CARBON COUNTY, UTAH

BY	M.C.W.
DATE OF SURVEY	
DATE FOR REVIEW	
PLOTTED WHYAN	
M.C.W.	
M.C.W.	

**WARE SURVEYING, L.L.C.**  
1344 North 1000 West  
P.O. Box 94501  
Provo, Utah 84601  
Phone: 435-820-4335  
Email: waresurveying@earthlink.net

Carbon Water Conserv. District  
Jensen Prop  
631  
Sec 5 T13S0 R7E