

TOWNSHIP 13 SOUTH, RANGE 6 EAST
 SECTIONS 24, 25, & 36
 SALT LAKE MERIDIAN
 DEPENDENT RESURVEY

PRIVATE

PURPOSE OF SURVEY

THIS SURVEY WAS MADE AT THE REQUEST OF THE USDA FOREST SERVICE FOR THE PURPOSE OF RESTORING, ESTABLISHING, MARKING, AND PERPETUATING THE CORNERS AND PROPERTY LINES WHICH DEFINE THE LANDS OWNED BY THE UNITED STATES OF AMERICA AND ADMINISTERED BY THE USDA FOREST SERVICE.

BASIS OF BEARING

ALL BEARINGS ARE MEAN GEODETIC BEARINGS BASED ON GLOBAL POSITIONING SYSTEM OBSERVATIONS. LATITUDE AND LONGITUDE WERE ESTABLISHED BY POST PROCESSING UTILIZING THE U.S. NATIONAL GEODETIC SURVEY'S ON-LINE POSITIONING USER SERVICE (OPUS). CONTROL POINTS ARE #5 REBAR WITH A FOREST SERVICE 1.5" ALUMINUM CAP MARKED A; WITH THE FOLLOWING COORDINATES.

POINT # 1
 LAT: 39°40'48.8248" N
 LONG: 111°13'53.9355" W
 ELEV: 9231.93'

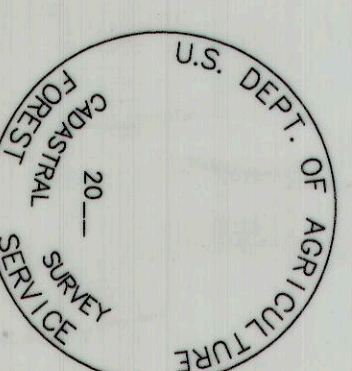
POINT # 2
 LAT: 39°39'22.9961" N
 LONG: 111°11'47.4825" W
 ELEV: 9924.52'

LEGEND

- PRIVATE NATIONAL FOREST BOUNDARIES SURVEYED AND MARKED.
- FOUND 2014 BLM ALUMINUM CAP / ALUMINUM POST MONUMENT.
- FOUND 1929 G.L.O. BRASS CAP / IRON POST MONUMENT.
- SET FOREST SERVICE MONUMENT FROM ORIGINAL EVIDENCE.

NOTES

FIELD WORK WAS PERFORMED USING A TRIMBLE R-8 GPS UNIT.
 CORNER PERPETUATION AND MONUMENTATION RECORDS FILED SEPARATELY.
 1929 G.L.O. RECORD BEARINGS AND DISTANCES ARE SHOWN IN PARENTHESES & ITALICS.
 GEOGRAPHIC COORDINATES SHOWN ARE BASED ON THE 1983 NORTH AMERICAN DATUM.
 DISTANCES SHOWN ARE IN FEET.
 ALL FOREST SERVICE MONUMENTS ARE AN ALUMINUM POST WITH A 3/4" DIAMETER ALUMINUM CAP, WITH IDENTIFYING "LOGO".



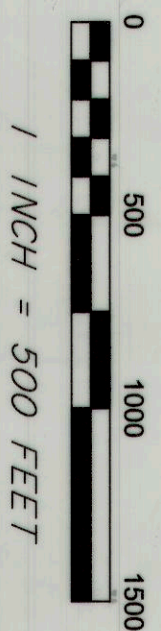
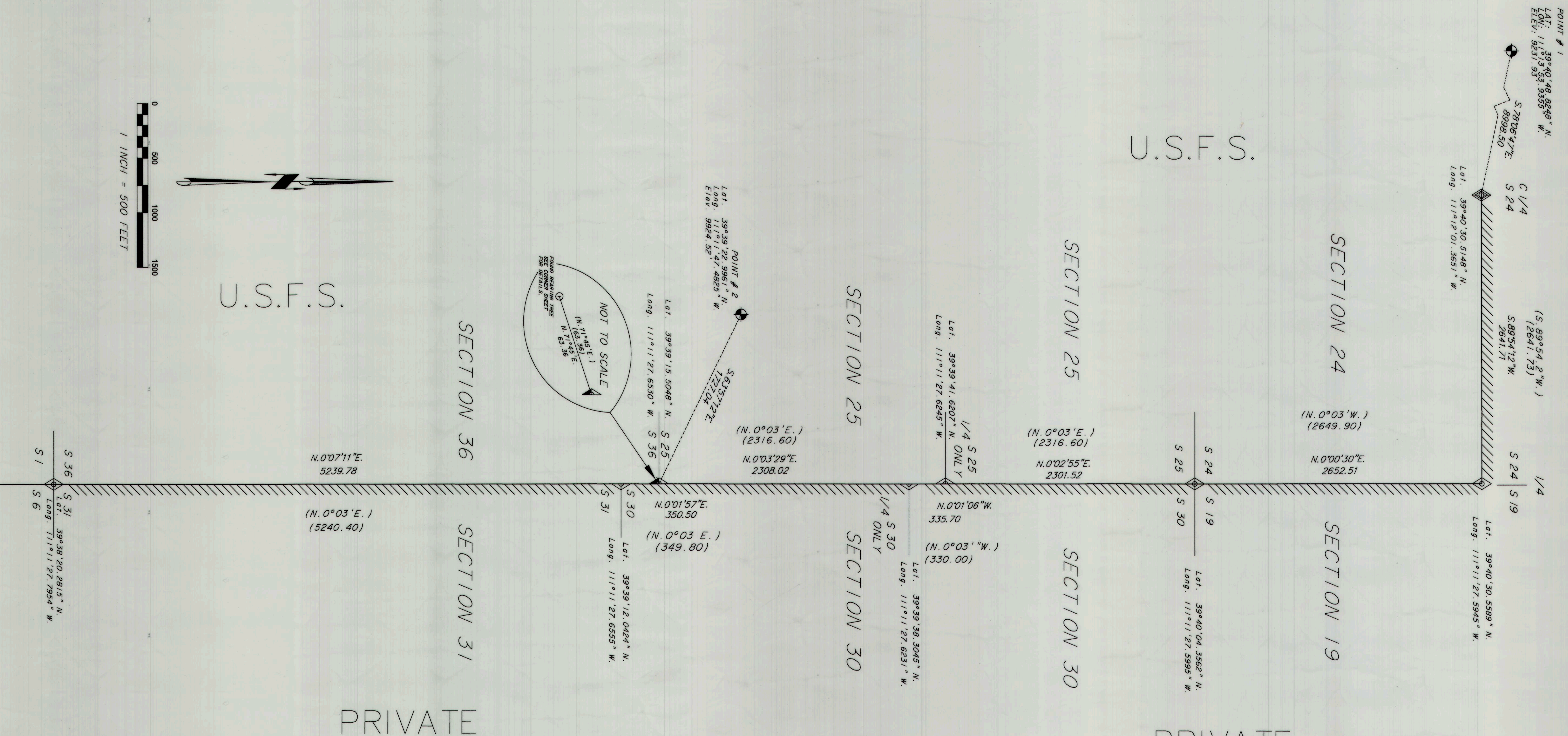
REFERENCES

1929 G.L.O. DEPENDENT RESURVEY OF A PORTION OF T. 13 S., R. 6 E., SLM, CONDUCTED BY J.C. CLARK UNDER SPECIAL INSTRUCTIONS DATED APRIL 4, 1929, GROUP NO. 210, UTAH.

CERTIFICATE OF SURVEY

I, MERRILL D. CAZIER, P.L.S. NO. 103573, STATE OF UTAH DO HEREBY CERTIFY THAT THE SURVEY REPRESENTED ON THIS PLAT WAS PERFORMED BY ME OR UNDER MY SUPERVISION IN ACCORDANCE WITH THE LAWS OF THE STATE OF UTAH, AS AN AGENT OF AND FOR THE EXCLUSIVE USE OF THE U.S. DEPARTMENT OF AGRICULTURE, FOREST SERVICE.

Merrill D. Cazier
 5-5-16



PROJECT NAME TROUGH SPRINGS U.S. DEPARTMENT OF AGRICULTURE FOREST SERVICE	
REGION 4 MANTI-LOGSAL NATIONAL FOREST	
RECORD OF SURVEY NATIONAL FOREST BOUNDARY TOWNSHIP 13 SOUTH, RANGE 6 EAST, SLM SECTIONS 24, 25 & 36 DEPENDENT RESURVEY AND SECTION SUBDIVISION CARBON COUNTY, UTAH	
SURVEYED BY: CAZIER, BOONE	DATE: AUGUST 2015
DRAWN BY: M D C	COMPUTER FILE:
THIS SURVEY WAS MADE AT MY REQUEST AND ACCEPTED FOR CHECKED BY: NATIONAL FOREST MANAGEMENT PURPOSES:	FIELD BOOK NO.:
FOREST SUPERVISOR	DATE:
SHEET: 1 OF 1	PLAT No. 01728, 701035700606 CARSON COUNTY RECORDER (Trough Springs) JMC