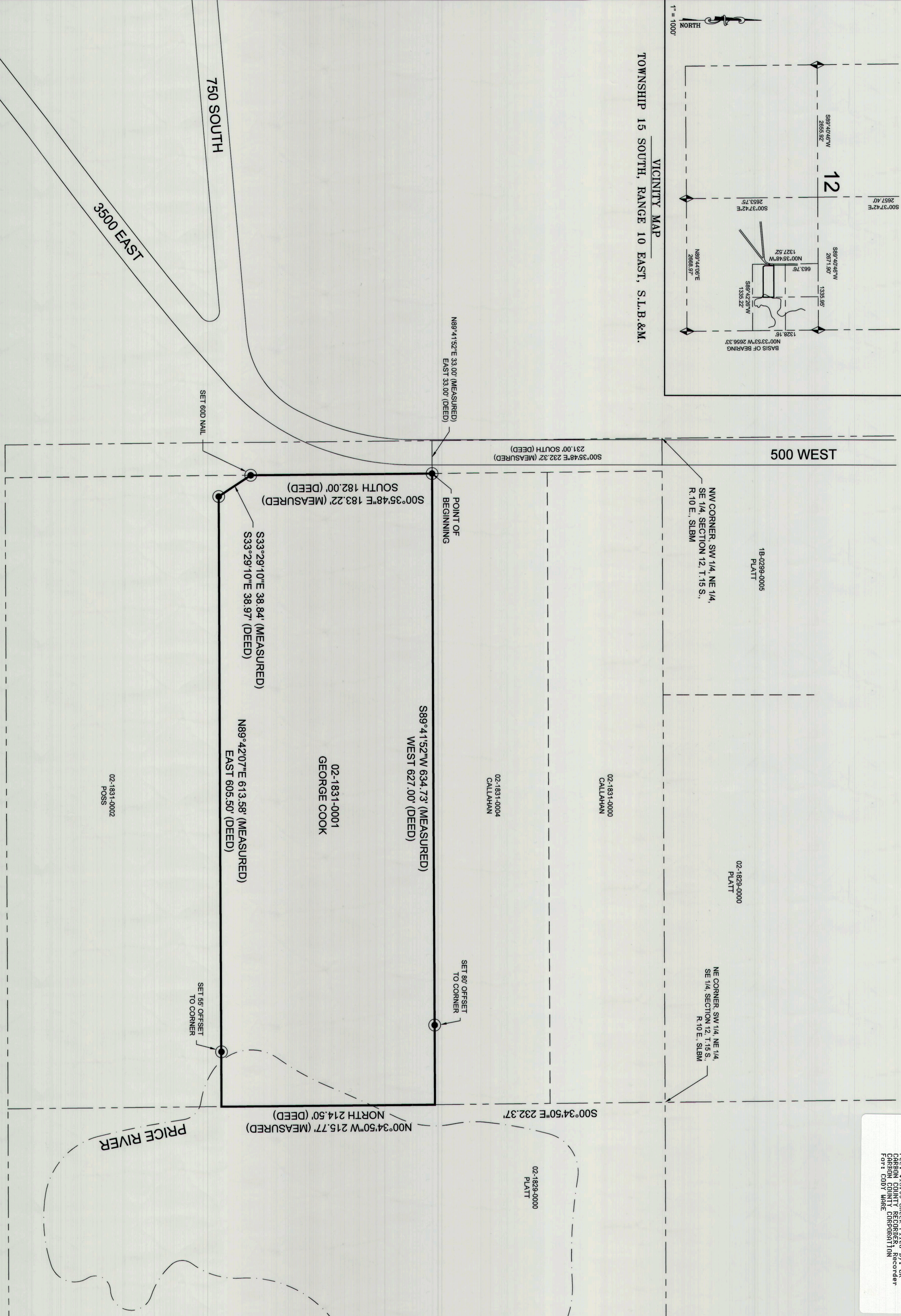


TOWNSHIP 15 SOUTH, RANGE 10 EAST, S.L.B. & M.



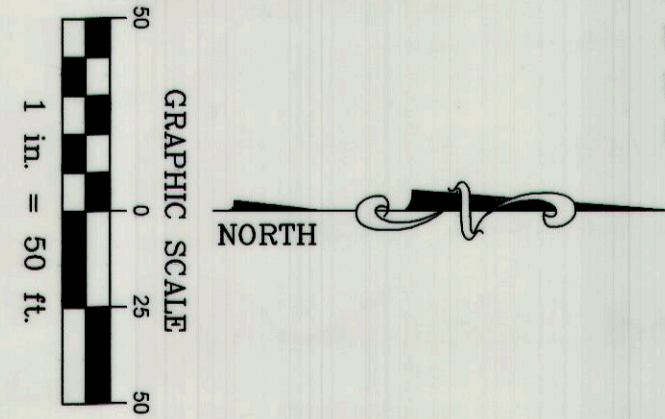
FILED 02-1831-0001
 02-1831-0001
 02-1831-0002
 02-1831-0003
 02-1831-0004
 02-1831-0005
 02-1831-0006
 02-1831-0007
 02-1831-0008
 02-1831-0009
 02-1831-0010
 02-1831-0011
 02-1831-0012
 02-1831-0013
 02-1831-0014
 02-1831-0015
 02-1831-0016
 02-1831-0017
 02-1831-0018
 02-1831-0019
 02-1831-0020
 02-1831-0021
 02-1831-0022
 02-1831-0023
 02-1831-0024
 02-1831-0025
 02-1831-0026
 02-1831-0027
 02-1831-0028
 02-1831-0029
 02-1831-0030
 02-1831-0031
 02-1831-0032
 02-1831-0033
 02-1831-0034
 02-1831-0035
 02-1831-0036
 02-1831-0037
 02-1831-0038
 02-1831-0039
 02-1831-0040
 02-1831-0041
 02-1831-0042
 02-1831-0043
 02-1831-0044
 02-1831-0045
 02-1831-0046
 02-1831-0047
 02-1831-0048
 02-1831-0049
 02-1831-0050
 02-1831-0051
 02-1831-0052
 02-1831-0053
 02-1831-0054
 02-1831-0055
 02-1831-0056
 02-1831-0057
 02-1831-0058
 02-1831-0059
 02-1831-0060
 02-1831-0061
 02-1831-0062
 02-1831-0063
 02-1831-0064
 02-1831-0065
 02-1831-0066
 02-1831-0067
 02-1831-0068
 02-1831-0069
 02-1831-0070
 02-1831-0071
 02-1831-0072
 02-1831-0073
 02-1831-0074
 02-1831-0075
 02-1831-0076
 02-1831-0077
 02-1831-0078
 02-1831-0079
 02-1831-0080
 02-1831-0081
 02-1831-0082
 02-1831-0083
 02-1831-0084
 02-1831-0085
 02-1831-0086
 02-1831-0087
 02-1831-0088
 02-1831-0089
 02-1831-0090
 02-1831-0091
 02-1831-0092
 02-1831-0093
 02-1831-0094
 02-1831-0095
 02-1831-0096
 02-1831-0097
 02-1831-0098
 02-1831-0099
 02-1831-0100

NARRATIVE
 THE PURPOSE OF THIS SURVEY IS TO LOCATE THE BOUNDARY OF PARCEL 02-1831-0001 DESCRIBED AT ENTRY 832570, BOOK 864, PAGE 36 IN THE OFFICIAL RECORDS OF THE CARBON COUNTY RECORDER FOR GEORGE COOK.
 THE BASIS OF BEARING USED FOR THIS SURVEY IS NORTH 00°35'48" WEST BETWEEN THE SOUTHEAST CORNER AND THE EAST QUARTER CORNER OF SECTION 12, TOWNSHIP 15 SOUTH, RANGE 10 EAST, SALT LAKE BASE AND MERIDIAN.
 THE ORIGINAL DEED DIMENSIONS WERE SCALED TO MATCH THE SURVEYED DIMENSIONS OF SAID SECTION 12.

BOUNDARY DESCRIPTION
 AS DESCRIBED AT ENTRY 832570, BOOK 864, PAGE 36
 BEGINNING AT A POINT 231.00 FEET SOUTH AND 33.00 FEET EAST OF THE NORTHWEST CORNER OF THE SOUTHWEST QUARTER OF THE NORTHEAST QUARTER OF SECTION 12, TOWNSHIP 15 SOUTH, RANGE 10 EAST, S.L.B.M. AND RUNNING THENCE SOUTH 182.00 FEET; THENCE SOUTH 33°29'10" EAST 38.84 FEET; THENCE EAST 805.50 FEET; THENCE NORTH 214.5 FEET; THENCE WEST 627.00 FEET TO THE POINT OF BEGINNING.

CERTIFICATE OF SURVEY
 I, M. CODY WARE, DO HEREBY CERTIFY THAT I AM A REGISTERED LAND SURVEYOR. CERTIFICATE NO. 4840688 AS PRESCRIBED BY THE LAWS OF THE STATE OF UTAH. I FURTHER CERTIFY THAT I HAVE MADE A SURVEY OF THE TRACT OF GROUND SHOWN AND THAT IT IS TRUE AND CORRECT TO THE BEST OF MY KNOWLEDGE AND BELIEF. I DO NOT FURNISH TO SHOW ALL EMBLEMENTS OF RECORD, NOR IS IT PROOF OF OWNERSHIP.

DATE: Nov 17 2012
 M. CODY WARE



DRAWING RECORD		BY	
NO.	DESCRIPTION	DATE	DATE
1	PLOTTED FOR REVIEW	07/23/16	
SURVEY FOR:		WARE SURVEYING, L.L.C.	
N.E. - S.E. 1/4 SECTION 12, TOWNSHIP 15 S., RANGE 10 E., S. L. B. & M.		1344 North 1000 West Pocatello, Utah 84401	
PHONE: 435-420-4335		EMAIL: waresurveying@emerytelecom.net	

