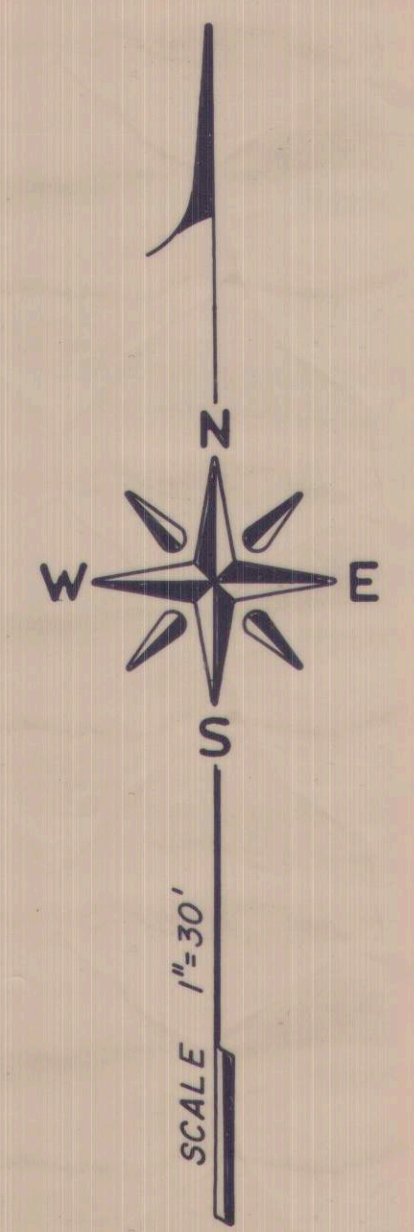


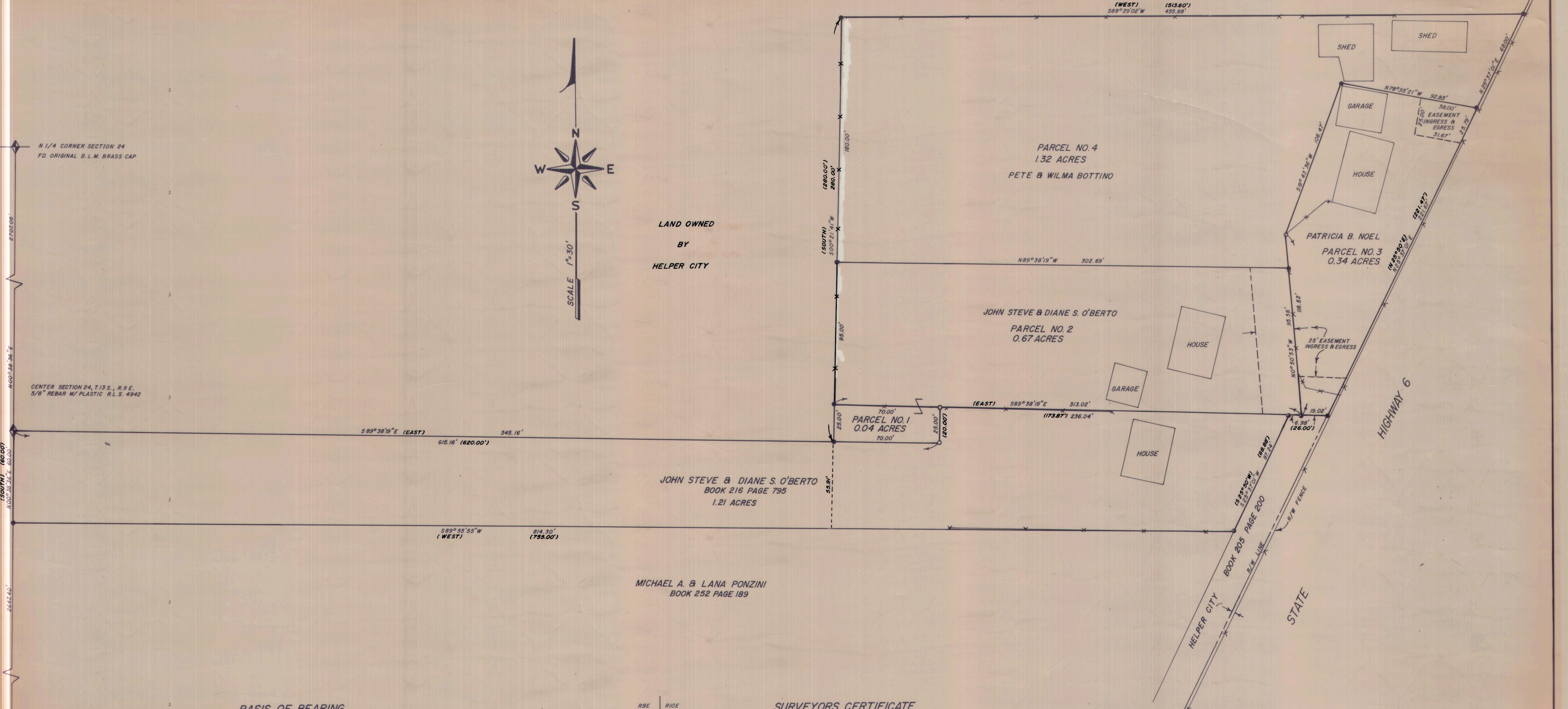
N 1/4 CORNER SECTION 24
FD. ORIGINAL B.L.M. BRASS CAP

CENTER SECTION 24, T.13 S., R.9 E.
5/8" REBAR W/ PLASTIC R.L.S. 4942

S 1/4 CORNER SECTION 24
FD. ORIGINAL STONE



LAND OWNED
BY
HELPER CITY

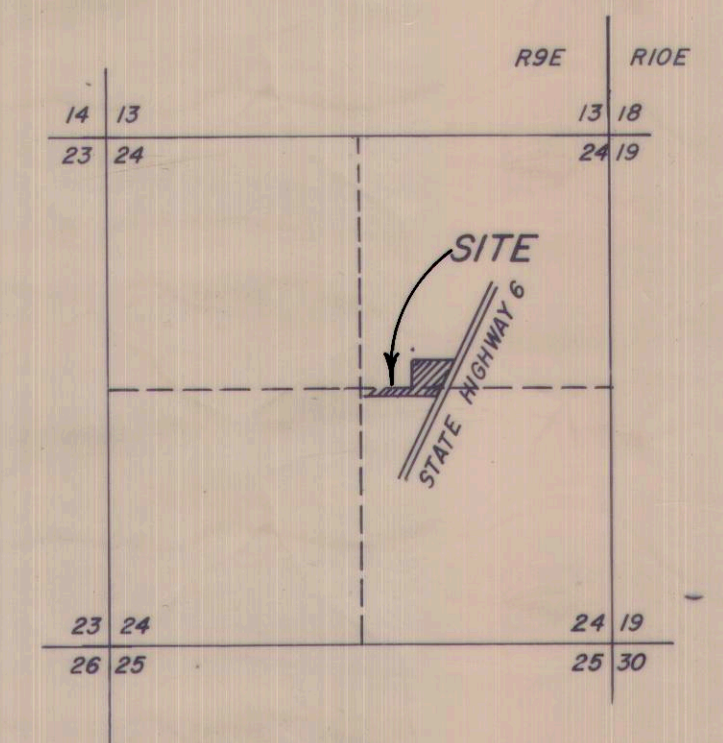


BASIS OF BEARING

THE NORTH LINE OF THE NW 1/4 OF SECTION 24,
T.13 S., R.9 E., S.L.B. & M. AND SHOWN AS N 89° 47' W
ON THE G.L.O. PLAT.

LEGEND

- SET 5/8" REBAR & PLASTIC CAP RLS 4942
- SET NAIL & SHINER
- CORNER NOT SET
- ◇..... SECTION CORNER AS NOTED
- ()..... RECORD BEARING & DISTANCE



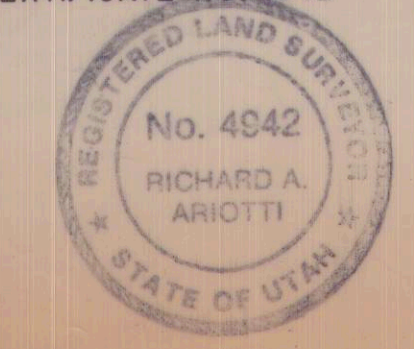
VICINITY MAP
NO SCALE

SURVEYORS CERTIFICATE

I, RICHARD A. ARIOTTI, A REGISTERED LAND SURVEYOR IN THE
STATE OF UTAH, CERTIFY THAT THIS IS A TRUE AND ACCURATE
REPRESENTATION OF THE LANDS SURVEYED BY ME AT THE
INSTANCE OF PETE & WILMA BOTTINO AND JOHN STEVE &
DIANE S. O'BERTO.

Richard A. Ariotti
RICHARD A. ARIOTTI, R.L.S.
UTAH CERTIFICATE NO. 4942

4-27-88
DATE



RECORD OF SURVEY			
FOR PETE & WILMA BOTTINO AND STEVE & DIANE O'BERTO			
SCALE 1"=30'	LOCATED IN SW 1/4 NE 1/4 & NW 1/4 SE 1/4 SECTION 24, T.13 S. R.9 E. S.L.B. & M.	DRAWN BY: RAA	
DATE: 4/22/88		REVISED: 5/22/88	
A&W SURVEYING			
317 SOUTH 3RD. WEST, PRICE, UTAH 84501		801-637-3686	
			DRAWING NO. 8801