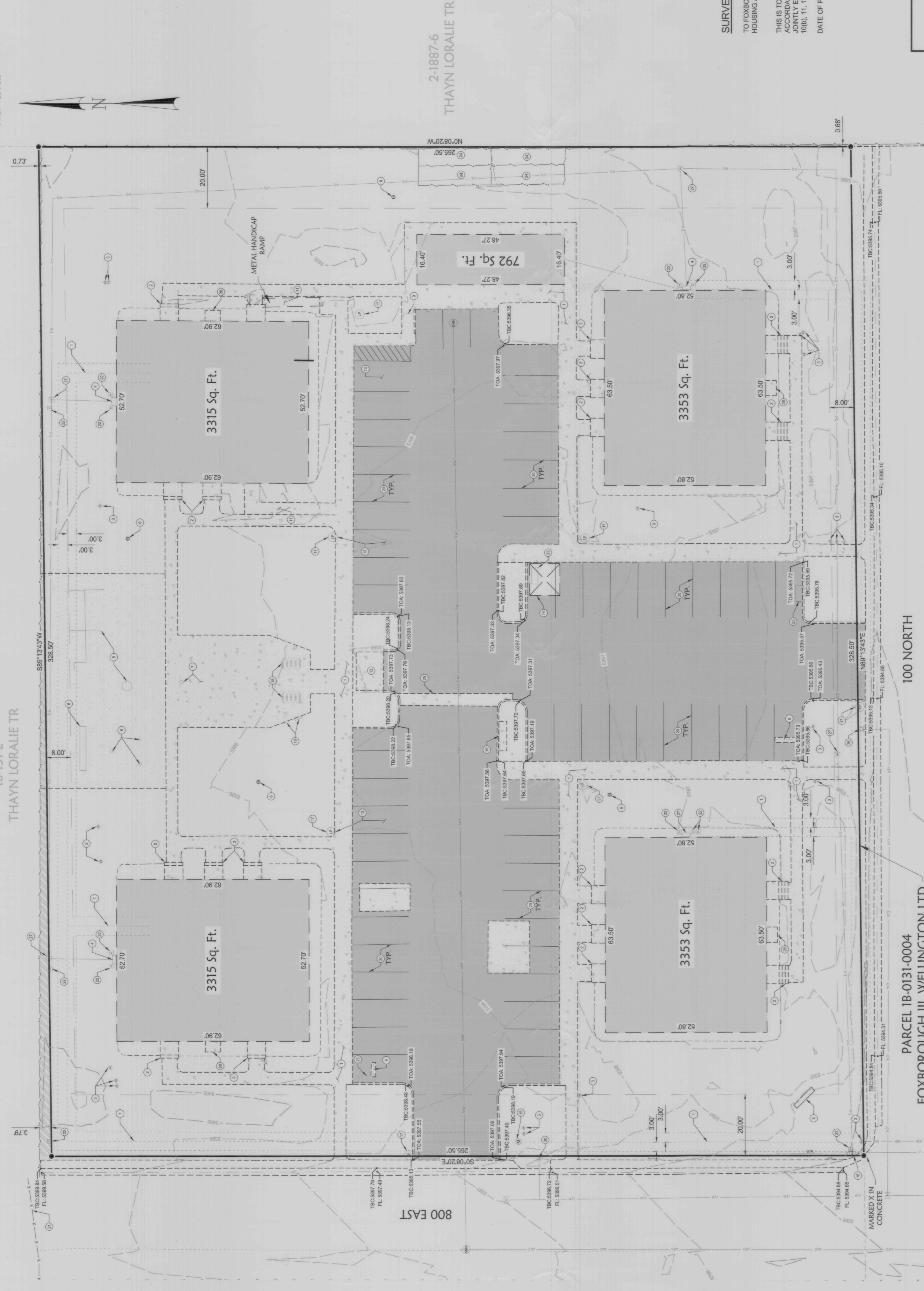
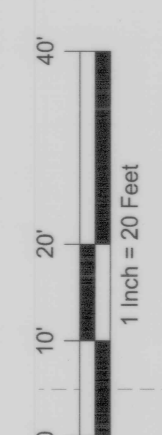


# Foxborough III, Wellington LTD - A.L.T.A. / N.S.P.S. Land Title Survey Parcel 3

Located in Section 5, Township 15 South, Range 11 East, S.L.B.&M.  
 Carbon County, Utah  
 2024

DATE: 02/26/2024  
 TIME: 10:07 AM  
 FILE: 2024-02-26-10-07-30.dwg  
 Fee: \$75.00 Check Filed By: RO  
 ASSESSED BY: JONES & DEMILLE  
 CARBON COUNTY CORPORATION  
 FOR: JONES & DEMILLE ENGINEERING



**LEGEND**

[Symbol]	SURVEYED BOUNDARY LINE
[Symbol]	SECTION LINE
[Symbol]	QUARTER SECTION LINE
[Symbol]	BUILDING SETBACK LINE
[Symbol]	DEED LINE
[Symbol]	EXISTING FENCE
[Symbol]	EXISTING CHAINLINK FENCE
[Symbol]	TELECOM EASEMENT AS-PER ENTRY #2314
[Symbol]	BOOK 235, PAGE 175 OF PUBLIC RECORDS
[Symbol]	EDGE OF ASPHALT SURFACING
[Symbol]	CONCRETE ROLL BACK CURB & GUTTER
[Symbol]	EDGE OF CONCRETE SURFACING
[Symbol]	WATER LINE
[Symbol]	SEWER LINE
[Symbol]	OVERHEAD POWER LINE
[Symbol]	BURIED POWER LINE
[Symbol]	SAND PLAY AREA
[Symbol]	EXISTING CONCRETE
[Symbol]	EXISTING BUILDING
[Symbol]	EXISTING ASPHALT
[Symbol]	ENCROACHMENT AREAS
[Symbol]	FOUND SURVEY MONUMENT AS NOTED
[Symbol]	SET REBAR WITH PLASTIC CAP STAMPED
[Symbol]	JONES & DEMILLE ENG.
[Symbol]	UNLESS OTHERWISE NOTED
[Symbol]	TELEPHONE PEDESTAL
[Symbol]	WATER VALVE
[Symbol]	POWER / UTILITY POLE & GUY WIRE
[Symbol]	GATE
[Symbol]	SIGN
[Symbol]	SEWER MANHOLE
[Symbol]	CONCRETE PAD (SIZE VARIES)
[Symbol]	LIGHT POLE
[Symbol]	MAILBOX
[Symbol]	IRRIGATION CONTROL BOX
[Symbol]	PET WASTE LOCATION
[Symbol]	CATCH BASIN
[Symbol]	FIRE HYDRANT

**SURVEYORS CERTIFICATE**  
 TO FOXBOROUGH III, WELLINGTON LTD, A LTA LIMITED PARTNERSHIP COMPANY, AND THE DEPARTMENT OF HOUSING AND URBAN DEVELOPMENT (H&U):

THIS IS TO CERTIFY THAT THIS MAP OR PLAN AND THE SURVEY ON WHICH IT IS BASED WERE MADE IN ACCORDANCE WITH THE 2016 MINIMUM STANDARD DETAIL REQUIREMENTS FOR ALTA SURVEYS, LAND TITLE SURVEYS, JOINTLY ESTABLISHED AND ADOPTED BY ALTA AND NSRS, AND INCLUDES ITEMS 1, 2, 3, 4, 6(a), 6(b), 7(a), 8, 9, 10(a), 10(b), 11, 12, 13, 14, 15, 16, & 19 OF TABLE A HEREOF. THE FIELD WORK WAS COMPLETED ON 02/26/2024.  
 DATE OF FLAT OR MAP: 2/26/2024.



PREPARED BY:  
**Jones & DeMille Engineering, Inc.**  
 CIVIL & STRUCTURAL ENGINEERING - SURVEYING  
 GIS - ENVIRONMENTAL - MATERIALS TESTING  
 - Infrastructure professionals -  
 1.800.748.5275 www.jonesanddemic.com

PROJECT NUMBER: 2312-012  
 FILE NAME: T:\proj\2312-012.dwg\2312-012\_alle.dwg  
 SURVEYED BY: MP  
 DRAWN BY: SMB  
 UPDATED: 2/26/2024 PLOTTED: 2/26/2024

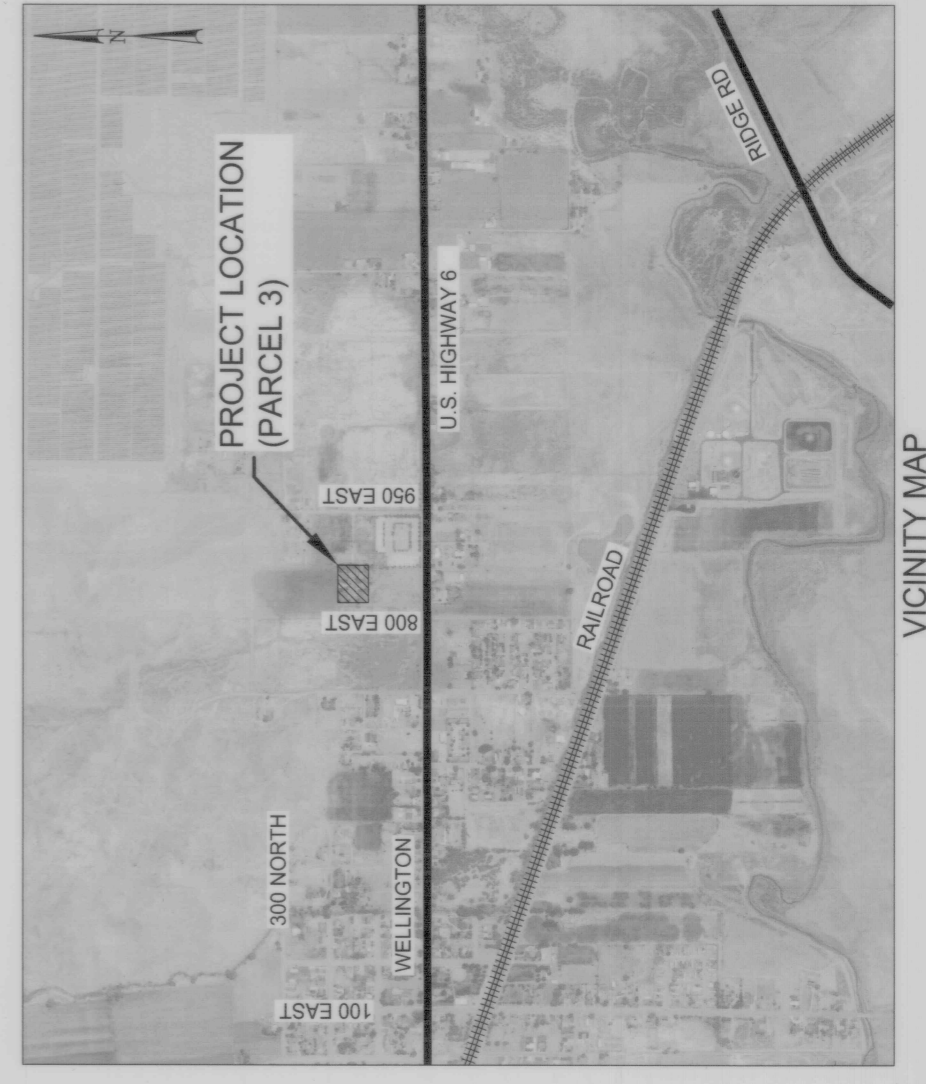
**Foxborough III, Wellington LTD.**  
**A.L.T.A. / N.S.P.S.**  
**Land Title Survey**  
 CARBON COUNTY, UTAH

**EXISTING CONDITIONS - KEY NOTES**

- 1 SIDEWALK
- 2 STAIRS
- 3 IRRIGATION CONTROL BOX
- 4 ELECTRIC METER BASE PANEL
- 5 APARTMENT SIGN
- 6 PET WASTE LOCATION & SIGN
- 7 BASKETBALL STANDARD & COURT
- 8 SWING SET / PLAYGROUND EQUIPMENT
- 9 BIKE RACK
- 10 BARBECUE GRILL
- 11 HANDICAP RAMP
- 12 DUMPSTER ENCLOSURE
- 13 HANDICAP PARKING / SIGN
- 14 DESIGNATED SMOKING PAVILION / AREA
- 15 MAILBOXES
- 16 POWER POLE
- 17 PICNIC TABLE
- 18 WATER METER
- 19 PARKING STALL
- 20 GATE
- 21 TELEPHONE PEDESTAL
- 22 BENCH
- 23 PET ENCLOSURE
- 24 CONCRETE WATERWAY
- 25 FIRE HYDRANT AND VALVE
- 26 ELECTRICAL TRANSFORMER
- 27 CIVIL SPACE ACCESS

**DEED DESCRIPTION**

PARCEL 3:  
 BEGINNING AT A POINT 476.5 FEET EAST AND 530 FEET NORTH OF THE SOUTHWEST CORNER OF SECTION 5, TOWNSHIP 15 SOUTH, RANGE 11 EAST, SALT LAKE BASE AND MERIDIAN, AND RUNNING THENCE NORTH 265.5 FEET; THENCE WEST 320.3 FEET; THENCE SOUTH 265.0 FEET; THENCE EAST 320.3 FEET TO BEGINNING.



VICINITY MAP  
 N.T.S.