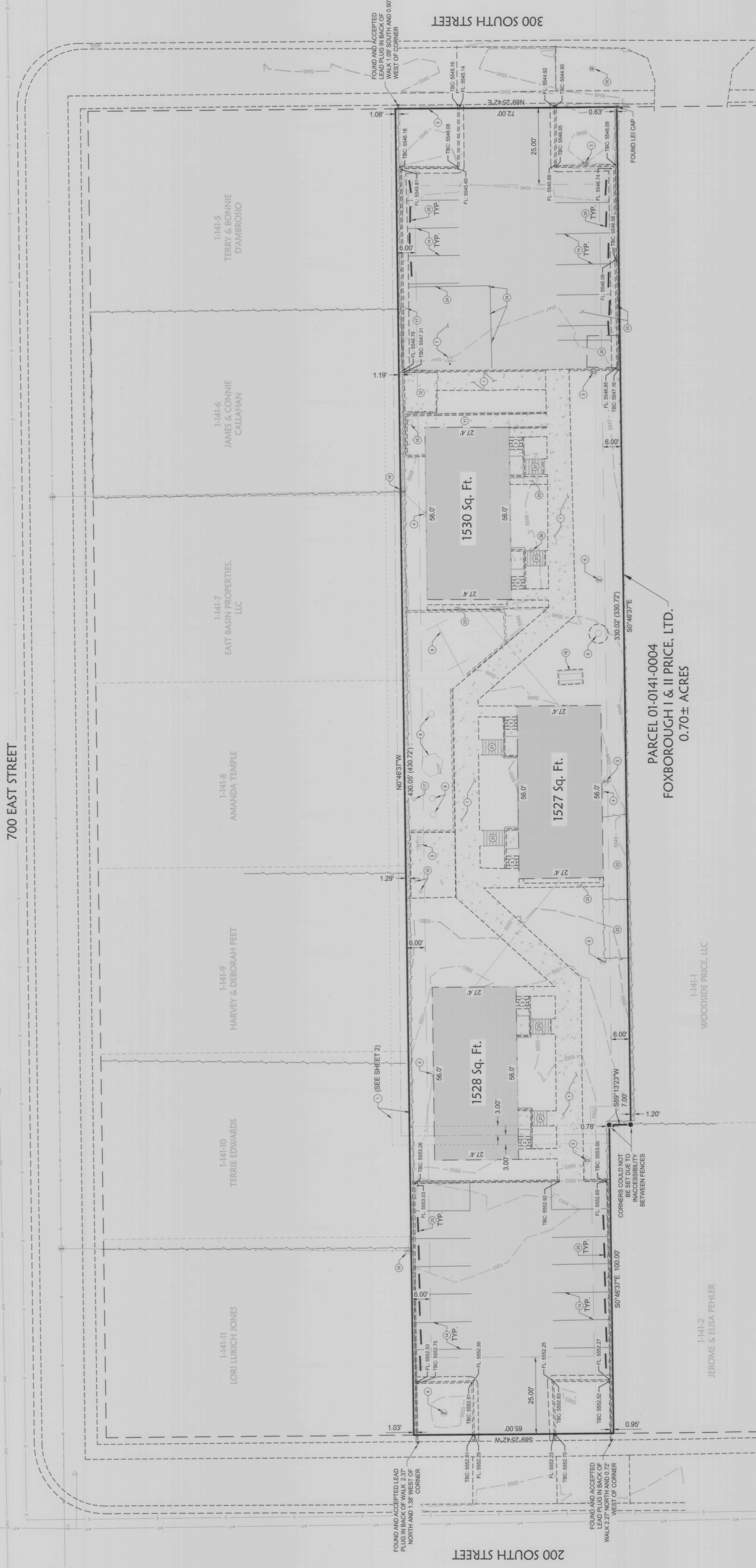
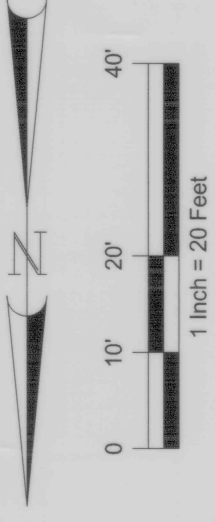


FOXBOROUGH I & II, LTD. - A.L.T.A. / N.S.P.S. Land Title Survey

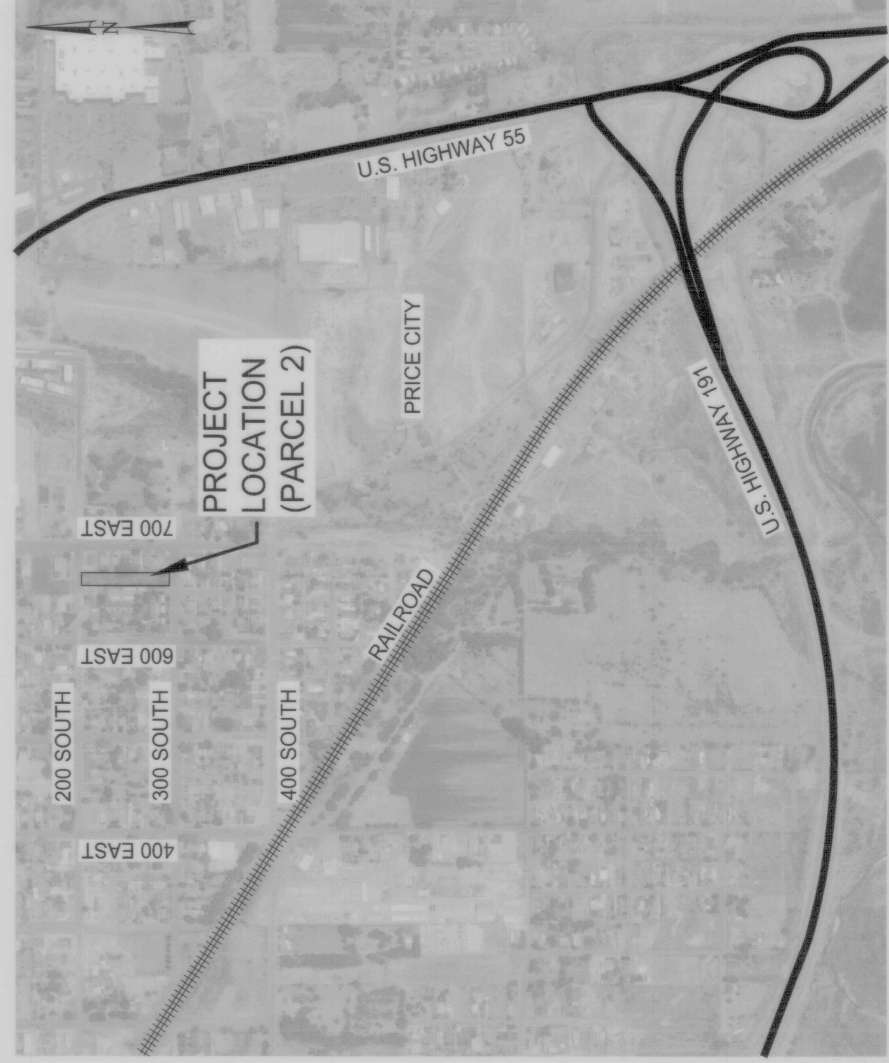
PARCEL 2

Located in Block 2, Price Townsite Survey
Carbon County, Utah, 2024



DEED DESCRIPTION

PARCEL 2
BEGINNING 100 FEET WEST OF THE NE CORNER OF BLOCK 14, PRICE TOWNSITE SURVEY, THENCE WEST 65 FEET; THENCE SOUTH 100 FEET; THENCE WEST 7 FEET; THENCE SOUTH 330.72 FEET; THENCE EAST 72 FEET; THENCE NORTH 430.72 FEET, TO POINT OF BEGINNING.



EXISTING CONDITIONS - KEY NOTES

- 1 SIDEWALK
- 2 BASEMENT STAIRS
- 3 IRRIGATION CONTROL BOX
- 4 ELECTRIC PANEL
- 5 APARTMENT SIGN
- 6 PET WASTE LOCATION & SIGN
- 7 BASKETBALL STANDARD & COURT
- 8 SWING SET / PLAYGROUND EQUIPMENT
- 9 BIKE RACK
- 10 BARBECUE GRILL
- 11 SIDEWALK RAMP
- 12 FENCED IN ENCLOSURE
- 13 HANDICAP PARKING / SIGN
- 14 PARKING STALL
- 15 MAILBOXES
- 16 POWER POLE
- 17 LIGHT POLE
- 18 PICKUP TABLE
- 19 WATER METER
- 20 DESIGNATED SMOKING PAVILION
- 21 METAL STAIRS (SECOND STORY)
- 22 PET ENCLOSURE
- 23 CONCRETE WATERWAY
- 24 BOLLARD
- 25 TRAFFIC BUMPER
- 26 DRY WELL / SUMP
- 27 LIGHT POLE / POWER POLE

LEGEND

- SURVEYED BOUNDARY LINE
- SECTION LINE
- BLOCK LINE
- BUILDING SETBACK LINE
- DEED LINE
- EXISTING FENCE
- EXISTING CHAINLINK FENCE
- EDGE OF DIRT SURFACING
- EDGE OF ASPHALT SURFACING
- CONCRETE CURB & GUTTER
- EDGE OF CONCRETE SURFACING
- EXISTING WATER LINE
- EXISTING SEWER LINE
- EXISTING GAS LINE
- OVERHEAD POWERLINE
- OVERHEAD TELEPHONE LINE
- EXISTING CONCRETE
- SAND PLAY AREA
- EXISTING BUILDING
- EXISTING ASPHALT
- ENCROACHMENT AREAS

- ▲ FOUND SURVEY MONUMENT AS NOTED
- SET BEAR WITH PLASTIC CAP STAMPED JONES & DETALLE ENG UNLESS OTHERWISE NOTED
- WATER VALVE
- POWER / UTILITY POLE & GUY WIRE
- SIGN
- SEWER MANHOLE
- CONCRETE PAD (SIZE VARIES)
- LIGHT POLE
- MAILBOX
- IRRIGATION CONTROL BOX
- PET WASTE LOCATION
- CATCH BASIN
- FIRE HYDRANT

SURVEYORS CERTIFICATE

TO FOXBOROUGH I & II, LTD., A UTAH LIMITED PARTNERSHIP COMPANY, AND THE DEPARTMENT OF HOUSING AND URBAN DEVELOPMENT ("HUD").
THIS IS TO CERTIFY THAT THIS MAP OR PLAN AND THE SURVEY ON WHICH IT IS BASED WERE MADE IN ACCORDANCE WITH THE 2016 MINIMUM STANDARD DETAIL REQUIREMENTS FOR ALIENS' LAND TITLE SURVEYS, JOINTLY ESTABLISHED AND ADOPTED BY ALTA AND NBS, AND INCLUDES ITEMS 1, 2, 4, 6(a), 6(b), 7(a), 8, 9, 10(a), 10(b), 11, 12, 13, 15, 17, 18, & 19 OF TABLE A THEREOF. THE FIELD WORK WAS COMPLETED ON 02/26/2024.
DATE OF PLAN OR MAP: 2/26/2024.



MARTIN G. PIERCE, L.S. #5581193

DATE

PREPARED BY:
Jones & DeMille Engineering, Inc.
CIVIL & STRUCTURAL ENGINEERING - SURVEYING
GIS - ENVIRONMENTAL - MATERIALS TESTING
- infrastructure professionals -
1.800.748.5275 www.jonesanddemic.com

PROJECT NUMBER: 2312-011 FILE NAME: HighRes02312-011.dwg
SURVEYED BY: MP DRAWN BY: SMB UPDATED: 2/26/2024 PLOTTED: 2/26/2024

FOXBOROUGH I & II, LTD.
A.L.T.A. / N.S.P.S.
Land Title Survey
CARBON COUNTY, UTAH
1" = 20'