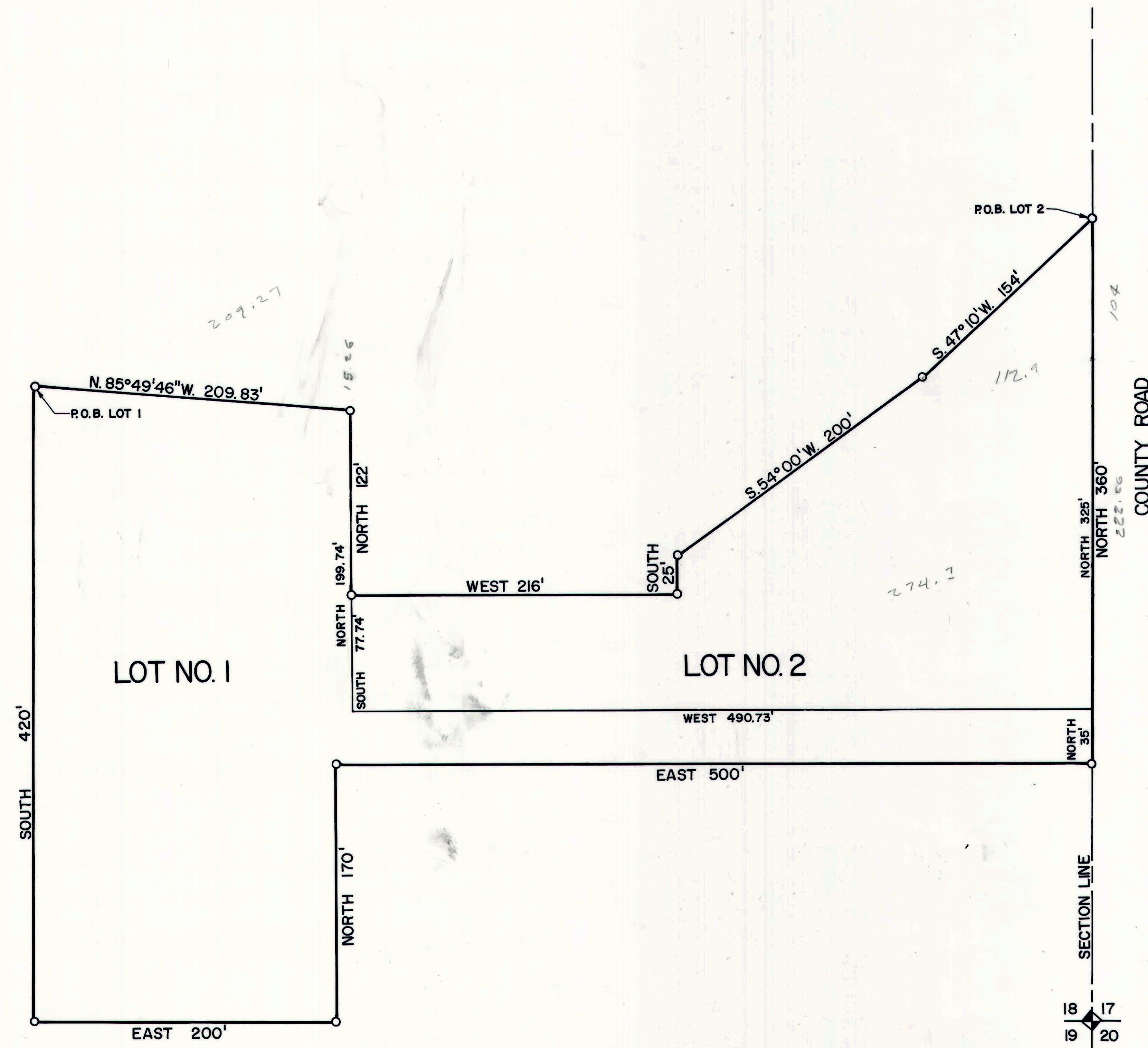


LOCATED IN THE SE 1/4, SE 1/4, SEC.18
T.14S., R.10E., S.L.B. & M. CARBON CO.

T. 14 S. R. 10 E.

SCALE: 1" = 50'



LOT NO. 1

BEGINNING AT A POINT WHICH LIES 420 FT. NORTH AND 700 FT. WEST FROM THE SE CORNER OF SECTION 18, T.14S., R.10E., S.L.B. 8 M., AND RUNNING THENCE SOUTH 420.00 FT.; THENCE EAST 200.00 FT.; THENCE NORTH 170.00 FT.; THENCE EAST 500.00 FT.; THENCE NORTH 35.00 FT.; THENCE WEST 490.73 FT.; THENCE NORTH 199.74 FT.; THENCE N.85°49'46"W. 209.83 FT., MORE OR LESS TO THE POINT OF BEGINNING. CONTAINS 2.30 ACRES.

BEGINNING AT A POINT WHICH LIES 530 FT. NORTH FROM THE SE CORNER OF SECTION 18, T.14 S., R.10 E., S.L.B. & M., AND RUNNING THENCE S.47°10'W. 154.00 FT.; THENCE S.54°00'W. 200.00 FT.; THENCE SOUTH 25.00 FT.; THENCE WEST 216.00 FT.; THENCE SOUTH 77.74 FT.; THENCE EAST 490.73 FT.; THENCE NORTH 325.00 FT., MORE OR LESS TO THE POINT OF BEGINNING. CONTAINS 1.76 ACRES.

COUNTY SURVEYOR'S CERTIFICATE

I HEREBY CERTIFY THAT I HAVE HAD THIS PLAT EXAMINED
BY THIS OFFICE AND THAT IT IS CORRECT AND IN ACCORDANCE
WITH INFORMATION ON FILE.

DATE _____

CARBON COUNTY SURVEYOR

PRESENTED TO THE CARBON COUNTY PLANNING & ZONING COMMISSION
THIS 9th DAY OF June 1981, AT WHICH TIME THIS MINI
SUBDIVISION WAS APPROVED & ACCEPTED.

Karol R. Masten
PLANNING & ZONING COMMISSION CHAIRMAN

ATTEST: _____
CARBON COUNTY CLERK

18-14-10

RAND TAPPELSON