



Carbon County

*Community
Wildfire
Preparedness Plan
2019*

Carbon County CWPP

INITIATIVE OVERVIEW	4
PARTNERSHIPS + COLLABORATION	5
COMMUNITY DESCRIPTION	7
RISK ASSESSMENT	10
RISK REDUCTION PRIORITY AREAS	15
Priority Area 1: Scofield Area	16
Priority Area 2: Beaver Creek Area	26
Priority Area 3: Hiawatha Area	37
Priority Area 4: Price River Corridor	48
Priority Area 5: Book Cliffs / Tavaputs Plateau	59
Priority Area 6: Nine Mile Canyon	70
Priority Area 7: Emma Park	80
Priority Area 8: East Carbon	91
MAPS	102
Wildfire Risk Overview	102
Wildfire Threat Overview	103
Vegetation Overview	104
Wildland Development Areas Overview	105
Carbon County Building Footprint Overview	106
APPENDIX	107

INITIATIVE OVERVIEW

Catastrophic wildfires in the Intermountain West are growing in impact and cost. Recognizing this, the Utah Legislature recently passed Senate Bill 122 (Wildland Fire Policy Updates) in 2016, which establishes a program that aims to lower the financial risk for communities that implement prevention, preparedness, and mitigation actions that are proven to reduce the risk and costs of wildland fire. The Utah Division of Forestry, Fire and State Lands (FFSL) has been charged to administer the program. Carbon County has committed to participate in this program, and selected Rural Community Consultants (RCC) to assist the county in preparing a Community Wildfire Preparedness Plan (CWPP). The following three-step process is being implemented to develop the CWPP, including: data gathering, public input, and plan adoption.

1. **Data Gathering** - RCC gathered historical and current data to assess the current state of the community and its potential risk. Relevant data includes: vegetation patterns, historical fires, ignition sources, location of infrastructure, etc.
2. **Public Input** - RCC will work with Carbon County to identify various stakeholders to provide expert and professional input on the plan. These stakeholders include the private landowners, applicable land management agency representatives, community leaders, county staff, and local fire department staff. RCC would also host a public outreach campaign to further identify plan objectives. This campaign would include a public survey, social media ads, and public open house events.
3. **Plan Adoption** - After all information is gathered, the plan will be drafted and presented to the county for adoption. The county-approved plan will then be sent to FFSL for final approval.

This process will help local leaders adopt an effective CWPP. Implementing the goals, policies, and suggested actions of the plan would alleviate the effect of future wildfires within the county.

PARTNERSHIPS + COLLABORATION

The Carbon County Emergency Management Department would like to give special thanks to stakeholders and various organizations that helped develop this community wildfire preparedness plan. Specifically, the organizations that assisted in development were Carbon County, local fire departments, and the Utah Division of Forestry, Fire, and State Lands. Following is a list of endorsing signatures from members of public organizations involved in the process. These entities will be responsible for the carrying out of the goals and action steps listed in this plan.

ORGANIZATION	REPRESENTATIVE SIGNATURE	DATE

COMMUNITY DESCRIPTION

Wildland-Urban-Interface (WUI)

The transition zone where developments or structures intermingle with wildland and vegetative fuels is referred to as the Wildland-Urban Interface (WUI). WUI data provided by the Utah Wildfire Risk Assessment Portal (UWRAP) can be interpreted as areas where human life and property are threatened by fire, burning in wildland fuels. Population growth in the WUI considerably increases the risk of wildfire. According to the UWRAP data, approximately 2.3% of the land cover or 21,147 acres of the county is within the WUI, and much of the WUI is considered to be at risk for wildfires.

Population and Demographics

Carbon County has a population of approximately 21,104 people as of 2019. According to population projections from the Kem C. Gardner Policy Institute, Carbon County will have a population of 25,628 in 2030, with an expected growth rate of approximately 1.78% annually. To accommodate the expected growth, much of the residential and commercial development would occur within the WUI. Policies need to be implemented now to ensure that new developments in the WUI are designed prudently to reduce the risk to human life and property. Analysis of current housing data is needed to determine which properties are at risk, the appropriate mitigation measures to reduce risk, and the risk to new property developments.

The county has a total of 5,628 housing units as of 2018 (see attached socioeconomics report). The median home value is approximately \$142,524, meaning that up to \$802,125,072 of owner-occupied property within the county potentially needs to be protected. There are also numerous commercial entities within the county that may be at risk for fire damage. The cost of fire-related damage to commercial properties is not limited to the value of those properties, but also the cost resulting in the loss of jobs and the subsequent adverse impact to the local economy. This CWPP is intended to identify which resources may be most susceptible to wildfire-related damage, and to identify measures to reduce risk.

Carbon County Demographic Summary

Carbon County's economic development objectives are not entirely described here, but they do include diversification. County leaders feel that it is important to diversify from the energy industry, which is the heart of Carbon County. The industries the county is focusing on are: manufacturing, fabricating, transportation, food processing, trade jobs, customer service, and engineering tech support, at-home/telecommuting work that includes customer service or technical.



POPULATION



21,104

Population



Median Age



Average Household Size

HOUSING INVENTORY



9,551

2018 Total Housing Units



1971

Median Year Structure Built (Total Housing Units)



5,628

2018 Owner Occupied Housing Units

HOUSING VALUES



\$142,524

Median Home Value



\$5,771

Average Spent on Mortgage & Basics



\$503

Median Contract Rent

INCOME



\$45,681

Median Household Income



\$21,912

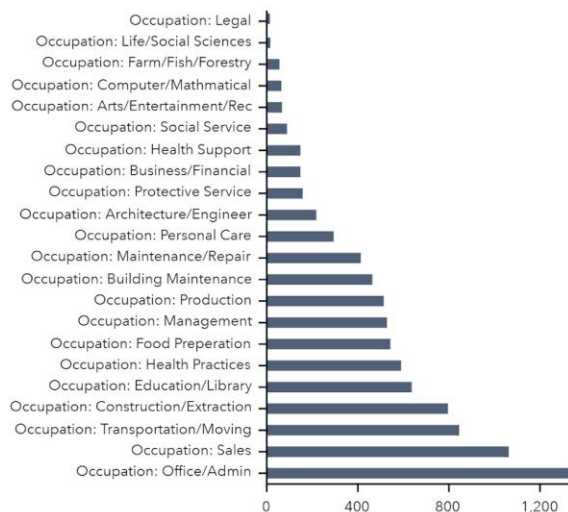
Per Capita Income



\$86,297

Median Net Worth

2018 LABOR FORCE BY OCCUPATION



Existing County Objectives and Policy Regarding Fire Management

Below is a summary of existing Carbon County objectives and policy as it relates to fire management:

Objectives

1. Fuels and fires are managed so that the county has no catastrophic wildfires.
2. All fire management planning within the county, including planning by federal partners, involves active participation from the county.
3. Fires are managed to protect human life, private property, sensitive species, and the local economy.

Policy

Carbon County supports fuel reduction treatments and improving fire safety, especially in high value areas or areas at high risk for catastrophic fires (wildland-urban-interface, developed recreational facilities, and important natural resources). Acceptable fuel reduction measures include prescribed fire, silviculture practices, prescribed grazing, and various treatments including chemical, biological, and mechanical. Cutting and harvesting of merchantable timber is preferred over burning. These fuel reduction treatments would increase public safety, as well as increase the health and sustainability of watersheds, forests, and rangelands.

The county supports partnering with private landowners, as well as federal and state agencies to implement fire management measures to accomplish objectives. Agencies are encouraged to avoid scheduling prescribed burns on or around major holidays or holiday weekends, or whenever high tourism inflows are anticipated. The county also supports BLM and Forest Service funding or training opportunities associated with fire management.

RISK ASSESSMENT

Introduction

Information from this section is intended to determine, based on available data, the likelihood of wildfire within areas of Carbon County, as well as the risk to structures and property in the event of a fire. This information is also intended to inform community leaders where mitigation efforts should be focused to reduce wildfire risk to the greatest extent possible. The data for this section was provided by FFSL through UWRAP.

Estimated Values at Risk

Values at risk in Carbon County consists of residential and commercial properties that could be adversely impacted by a wildfire. These at-risk values could also include, but are not limited to public properties, utilities, and other infrastructure.

Communities At Risk Data

The information in Table 1 (below) is derived from the Communities At Risk list that was developed to determine the scope of the challenges associated with the WUI, and to monitor the progress of fire hazard mitigation in these areas. The scale for all below-listed parameters is: 0=No Risk; 3=Extreme Risk. Thus, the higher the score, the more wildfire risk exists for a community.

Fire Occurrence

The Fire Occurrence parameter is a measure of wildfire risk to a community based on the number of previously documented fires in the vicinity of the community within the last 10 years. The more frequent wildfires have occurred near the community within the last 10 years, the higher the score (see Table 1 below).

From 1999 to 2008, there were 245 reported fires in Carbon County. Considering data from this timeframe, the majority of the acreage burned during years 2000 (2,023 acres), 2002 (3,557 acres), and 2007 (5,419 acres). Wildfires during years 2002 and 2007 correlate well with regional drought in Utah. The majority of the fires were classified as being ignited by natural means (73%); the remaining 27% of fires were caused by either campfires (6%), children (2%), debris burning (6%), equipment use (2%), incendiary devices/targets (1%), railroads (1%), or other miscellaneous sources (9%). Fires occurred during all months of the year, except for January. The month of July had the highest occurrence of fires (38% of all fires), followed by June and August (each month with 19% of all fires). The vast majority (87%) of fires occurred between the summer months of June through September.

As unnatural ignition sources caused approximately 27% of the total fires, mitigation goals should be focused to address fire safety and responsibility through public outreach campaigns. The public outreach campaigns should be concentrated during the critical summer months of June through September.

Communities could evaluate and revise current burning policies to increase compliance and possibly consider more stringent enforcement. Communities could provide more opportunities for community burn days or community-sponsored chipping, allowing debris to be disposed of in a more-controlled environment. More stringent fireworks restrictions could also be implemented during the summer months.

Fuel Hazard

The Fuel Hazard parameter is a measure of the fuel conditions in the vicinity of the community, including: topography, weather conditions, and the vegetation types. The more hazardous the fuel conditions near a community, the higher the score (see Table 1 below).

The vegetation that borders most Carbon County's communities is either pinyon-juniper woodlands, sagebrush steppe, or desert scrub/steppe. Communities in higher-elevation areas are often bordered by timber stands and a dense understory.

Pinyon and juniper woodlands comprise the most dominant vegetation cover type in Carbon County (27% of total land cover). Changes in historical fire regimes is thought to have caused pinyon and juniper to encroach and infill on thousands of acres of sagebrush steppe (Miller and Wigand 1994). Pinyon-juniper encroachment and infilling on sagebrush steppe ecosystems creates contiguous canopy fuels, which poses an ever increasing threat of catastrophic wildfire.

Pinyon-juniper expansion functions as an ecosystem stressor, which may reduce site resistance to invasive weeds (Brooks and Chambers 2011). The establishment and proliferation of invasive weeds (e.g., cheatgrass) in these arid and semi-arid environments increases site susceptibility to wildfire.

In higher-elevation forest types (25% of total land cover combined), past fire suppression policy and other management practices have resulted in excessive fuel buildup and forest disease (e.g., bark beetle and other insects), which can result in catastrophic wildfires (USFS 1999). Further, the UWRAP data suggests that flame length and rate of spread are highly correlated by fuel density and terrain steepness, which is representative of higher-elevation forest types.

Fuel management is a key component of community wildfire preparedness as each of the vegetation cover types near Carbon County communities are susceptible to wildfire. Although the UWRAP data is a valuable reference to vegetation and fuel conditions along the WUI, it is not a perfect representation of fuel conditions on the ground, and care must be taken to thoroughly evaluate fuel conditions along the WUI.

Fuel breaks interrupt contiguous fuels and are important for the protection of the WUI. Fuel breaks provide defensible space for firefighters to work, and reduce or slow the spread of fire to and from structures. Fuel breaks are cost-effective means of protecting structures from wildfire and can be implemented and maintained by the property owner (FEMA 2008).

Green-stripping is the practice of establishing fire resilient vegetation along a strip or block of land to diminish the risk of wildfire starting or spread beyond the green strip. The Natural Resource Conservation Service (NRCS) recommends using green-stripping along common ignition areas such as railroads, farmlands, and highways; green-stripping can be used to protect homes or neighborhoods that are located in high fire hazard areas (St. John 2009).

Values Protected

The Values Protected parameter is a measure of human and economic values associated with the community or landscape, such as homes, businesses, and community infrastructure. The more potential risk to human and economic values resulting from a wildfire, the higher the score (see Table 1 below).

Protecting residential areas should be the highest priority; however, focused effort should also be made to protect commercial properties as wildfire-related damage could result in the loss of jobs, adversely impacting the local economy.

Water and other utilities may be impacted by wildfire, and adequate planning to respond to service interruptions will ensure minimal utility down-time.

Fire Protection Capability

The Fire Protection Capability parameter is a measure of the fire protection abilities possessed by a community. Wildfire protection capabilities are measured indirectly by evaluating the community's Insurance Services Organization (ISO) rating; the higher the ISO rating (the more poorly equipped a community's firefighting capabilities), the higher the score (see Table 1 below).

Fire protection capabilities should be evaluated frequently to identify weaknesses and plan actions to improve capabilities.

Table 1: 2016 Table of Communities At Risk Compared with Fire Occurrence, Fuel Hazards, Values Protected, and Fire Protection Capability Scores.

Community Name	Fire Occurrence	Fuel Hazards	Values Protected	Fire Protection Capability	Overall Score
Aspen Cove	2	1	2	1	6
Beaver Creek	2	3	1	3	9
Carbonville	2	3	3	1	9
Clear Creek	2	2	3	2	9
East Carbon/Columbia	2	3	3	2	10
Helper	1	2	2	1	6
Hiawatha	1	2	2	3	8
Kenilworth	1	2	3	2	8
North Spring	2	3	0	1	6
Price	2	1	3	1	7
Scofield	2	2	1	2	7
Scofield Mountain Homes	2	3	2	3	10
Spring Glen	2	2	2	2	8
Sunnyside	2	3	3	2	10
Tavaputs	3	3	2	3	11
Wellington	2	2	2	1	7

Implications for Communities At Risk Data

The majority of the communities along the Price River corridor have risk scores that are moderate to high, and would require the implementation of some risk reduction measures; however, the smaller outlying communities (e.g., East Carbon, Scofield Mountain Homes, Sunnyside, and Tavaputs) should receive more priority in risk reduction measure implementation. Specifically, fuel reduction treatments could be implemented to reduce hazardous fuel loading adjacent to the WUI, local officials could identify specific utility or infrastructure resources that are at risk and implement measures to protect those resources, and firefighting capabilities could be evaluated to identify cost-effective improvements.

Table 2: Overall Communities At Risk Data (Average Values for All Carbon County Communities)

Fire Occurrence	Fuel Hazard	Values Protected	Fire Protection Capabilities	Overall Rating*
1.9	2.3	2.1	1.9	8.2

* Total Score Risk Categories: 4-7 Moderate; 8-11 High; and 12 Extreme

Natural Resources At Risk

Natural resources at risk within Carbon County include the watershed health, forest products, wildlife, and recreation and tourism opportunities. Resources can be directly impacted by wildfire or indirectly impacted by the effects of wildfire.

Riparian Areas

Riparian areas within the county serve a variety of functions to protect water resources, including trapping sediment, filtering pathogens and nutrient pollution, and maintaining biological diversity. If riparian areas are burned, water quality and wildlife habitat can be jeopardized. Some reaches of riparian vegetation are more sensitive to wildfire impacts than others. According to the UWRAP data, the moderate to highly-sensitive reaches of riparian area are generally associated with higher elevations, likely due to the erosion potential on steeper grades. The data indicates that 37.1% of riparian areas (28,366 acres) are considered the least sensitive to wildfires, 38.4% of riparian areas (29,354 acres) are considered moderately sensitive to wildfires, and 24.4% of riparian areas (18,658 acres) are considered the most sensitive to wildfires.

Forest Assets

Forest assets provide timber, fuel, aesthetics, recreational opportunities, wildlife habitat, water resources, etc. Fire can be used to manage forest assets under certain conditions, but fire in unfavorable conditions can result in catastrophic forest fires, jeopardizing forest resources and long-term ecological stability. The county has 486,178 acres of forest assets, which are managed by private entities, the State of Utah, the U.S. Forest Service, and the Bureau of Land Management. Approximately 6.8% of forest assets are considered sensitive or tree species that are intolerant or sensitive to damage from fire with low intensity. Approximately 71.2% of forest assets are considered resilient or tree species that have characteristics that help the tree resist damage from fire and whose adult stages can survive low-intensity fires. Approximately 22% of forest assets are considered adaptive or tree species adapted with the ability to regenerate following the fire by sprouting or serotinous cones. Unfortunately, the UWRAP data does not provide data an assessment for forest asset response to a high intensity fire situation, and it is assumed that the majority of forest types would be much less resilient or adaptive to high intensity wildfires. Management priority should be given to the highest-value forest assets that are the least resilient to fire.

Wildlife

Wildlife commonly seen throughout the county include: muledeer, elk, raccoons, rabbits, squirrels, jays, magpies, pheasants, quail, dove, woodpeckers, ducks, hawks, eagles, owls, vultures, and finches. Carbon County is home to a number of state-sensitive species, as well as federally listed threatened or endangered species. Wildfire can drastically alter wildlife habitat and either displace or destroy wildlife in burned areas. There are three primary wildlife management areas within the county, including the Gordon Creek, Range Creek, and Lower Fish Creek State Wildlife Areas. More than half of Carbon County (by land area) is considered substantial or crucial habitat for mule deer and elk. Management priority should be given to areas that—if burned—would cause the most adverse impact to wildlife.

Soil

Depending on the severity of a wildfire, much of the vegetation and litter are removed, leaving bare soil susceptible to erosion. On gentler slopes, soil loss through sheet erosion can be significant, but is generally not as severe as on steep slopes; wildfires on steep slopes may cause rilling or gully formation, potentially resulting in severe soil loss.

Severe wildfires in forests and woodlands often cause soil hydrophobicity and/or soil sterilization, while also killing grasses and forbs that help hold soils in-place. This hinders natural revegetation and managed seeding efforts, and ultimately leads to increased soil erosion. Management priority should be given to areas with steep slopes and dense fuels to prevent excessive soil erosion.

Water Resources

Maintaining water quality and quantity is a high priority for Carbon County communities. Much of the county's drinking water is sourced from the upper watersheds; for this reason, proper management of watersheds is vital to Carbon County communities.

The UWRAP drinking water data is categorized by both the quality and quantity of public surface drinking water, and is represented at a HUC 12 watershed scale. The most important watersheds for drinking water within Carbon County are the watersheds associated with Scofield Reservoir and Grassy Trail Reservoir. The UWRAP drinking water impacts data is a measure of the impacts to drinking water resulting from wildfire. The most-negatively impacted watersheds were the aforementioned most-valuable watersheds. Water resources should be evaluated to determine which watershed areas and existing infrastructure are most at risk; protection priority should be given to areas and infrastructure that would have the most impact on county drinking water.

UWRAP Summary Report

The following information is based on the UWRAP and Area of Interest (AOI) Summary Reporting Tool. Reports are generated using a set of predefined map products developed by the West Wide Wildfire Risk Assessment (2012) project. The UWRAP provides a consistent, comparable set of scientific results to be used as a foundation for wildfire mitigation and prevention planning in Utah.

Wildland Development Area (WUI) Impacts: Data set is derived using a Response Function modeling approach. To calculate the Wildland Development Area Impact Response Function Score, the Wildland Development Area housing density data was combined with flame length data and Response Functions assignments to represent potential impacts.

Wildfire Threat: A number that is closely related to the likelihood of an acre burning.

Wildfire Risk: Combines the likelihood of a fire occurring (Threat), with those of areas of most concern that are adversely impacted by fire (Fire Effects). Wildfire Threat Index is derived from historical fire occurrence, landscape characteristics including surface fuels and canopy fuels, percentile weather derived from historical weather observations and terrain conditions. Fire Effects are comprised of Value Impacts and Suppression Difficulty.

Table 3: Total Acres/Percent Total Land Area for Each Parameter within Carbon County

Category	Wildfire Risk	WUI Impacts	Wildfire Threat
Low (1-4)	518,870 acres / 54.6%	12,403 acres / 73.7%	529,472 acres / 55.7%
Moderate (5-7)	335,158 acres / 35.3%	3,955 acres / 23.5%	355,940 acres / 37.5%
High (8-10)	95,891 acres / 10.1%	476 acres / 2.8%	64,507 acres / 6.8%

RISK REDUCTION PRIORITY AREAS

Carbon County identified eight separate priority areas for wildfire risk reduction (see Figure 1). Risk reduction goals for each priority area described below include goals related to wildfire prevention, preparedness, mitigation, and maintenance. Management actions associated with each goal should create 1) resilient landscapes, 2) fire adapted communities, and 3) adequate community wildfire response.

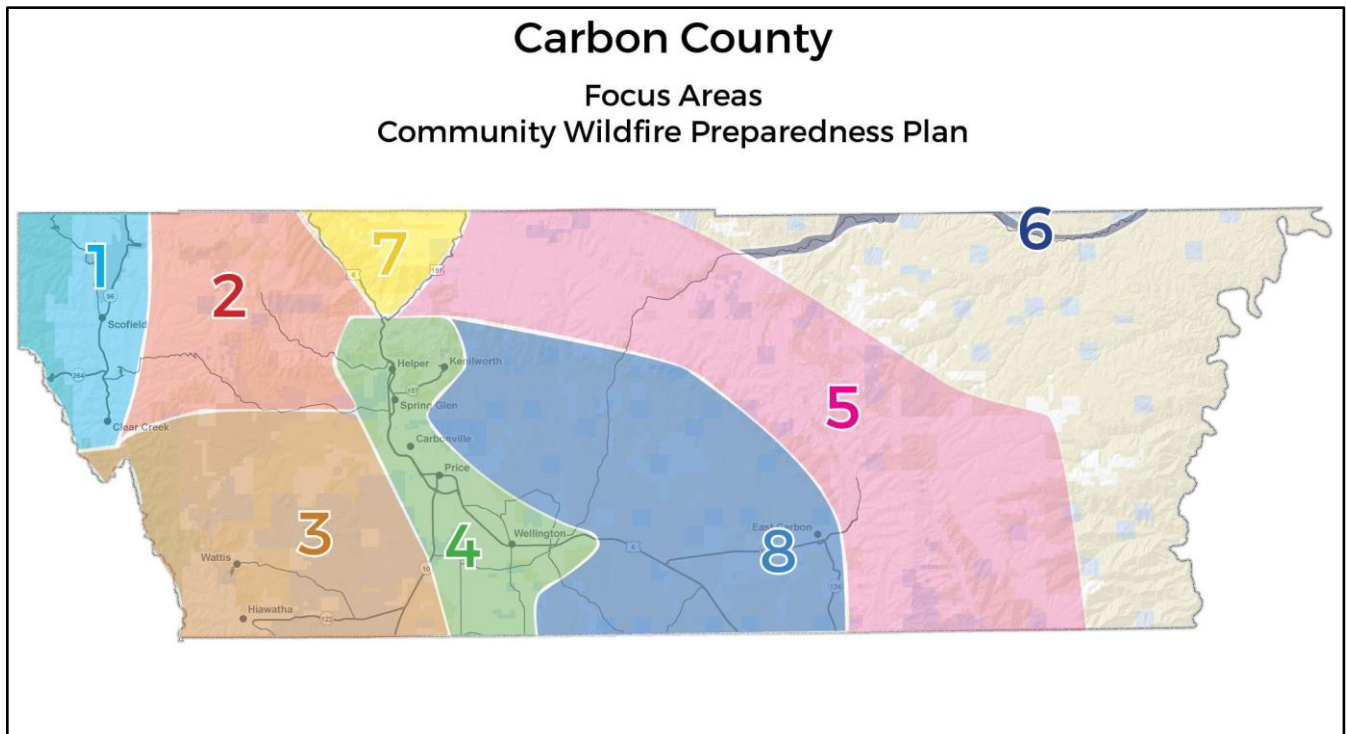


Figure 1: Carbon County CWPP Priority Study Areas

Priority Area 1: Scofield Area

Priority Area 1 includes approximately 49,000 acres of land, which extends from the northern portion of Scofield Reservoir to approximately 1.5 miles south of Clear Creek (see Figures 1 and 2). Communities within this priority area include Clear Creek, Scofield, and unincorporated communities immediately adjacent to Scofield Reservoir; these communities are generally accessible year-round. Communities within this priority area are small and somewhat ill-equipped with regards to fire suppression capabilities; currently, communities within Priority Area 1 share fire suppression resources, including the Scofield Volunteer Fire Department, its two fire engines, a pumper truck, and several fire hydrants. Other available resources include two county-owned 4,000 gallon water tenders, county-owned bulldozers and graders, as well as state and federally-owned fire engines.

Much of the area is used for recreation. Elevation ranges from approximately 7,600 to 9,600 feet above sea level, and vegetation in the area is primarily composed of sagebrush steppe, mountain brush, and higher-elevation forest types. Many of the communities are surrounded by timber stands, with a dense understory component that could provide ladder fuels. Existing fire breaks include SR-96 and other established roadways, as well as mosaics of vegetation consisting of low, sparse shrubs and grasses. Water sources for fire suppression activities could include Scofield Reservoir, Pondtown Creek, Fish Creek, or Mud Creek.

According to the UWRAP data, this area has a relatively low wildfire risk and threat, likely because of higher precipitation totals, few established roads, and a mosaic of vegetation types that may form natural fuel breaks. However, there are many properties and structures that are located adjacent to vegetative fuels, and could be a wildfire ignition source. Recreation in this area may increase the probability of campfire-ignition wildfires. Further, according to the UWRAP data, the area has experienced a number of major wildfires within the last 20 years (Pondtown [2001]; Fin Canyon [2003]; French Creek [2007]; and Seeley [2012]); analysis of other sources may reveal a more-comprehensive fire history of the area. The largest wildfire in recent years, the Seeley fire, was ignited by lightning and burned 48,050 acres during 22 days. The UWRAP data indicates that the some U.S. Forest Service prescribed burning treatments have occurred within this priority area, located immediately west of Scofield Reservoir.

Several years ago a prescribed burn got out of control and embers from that burn ignited another forest fire on private property which was less than a couple hundred yards from our community. Our entire community was evacuated. Fortunately the fire was brought under control without any structural damage to our community. The point is that the entire area is a high risk area for forest fires.

Due to the steep terrain, the limited accessible roadways, and the scattered nature of the residential areas, ground response to wildfires is expected to be somewhat slow and limited to accessible areas.

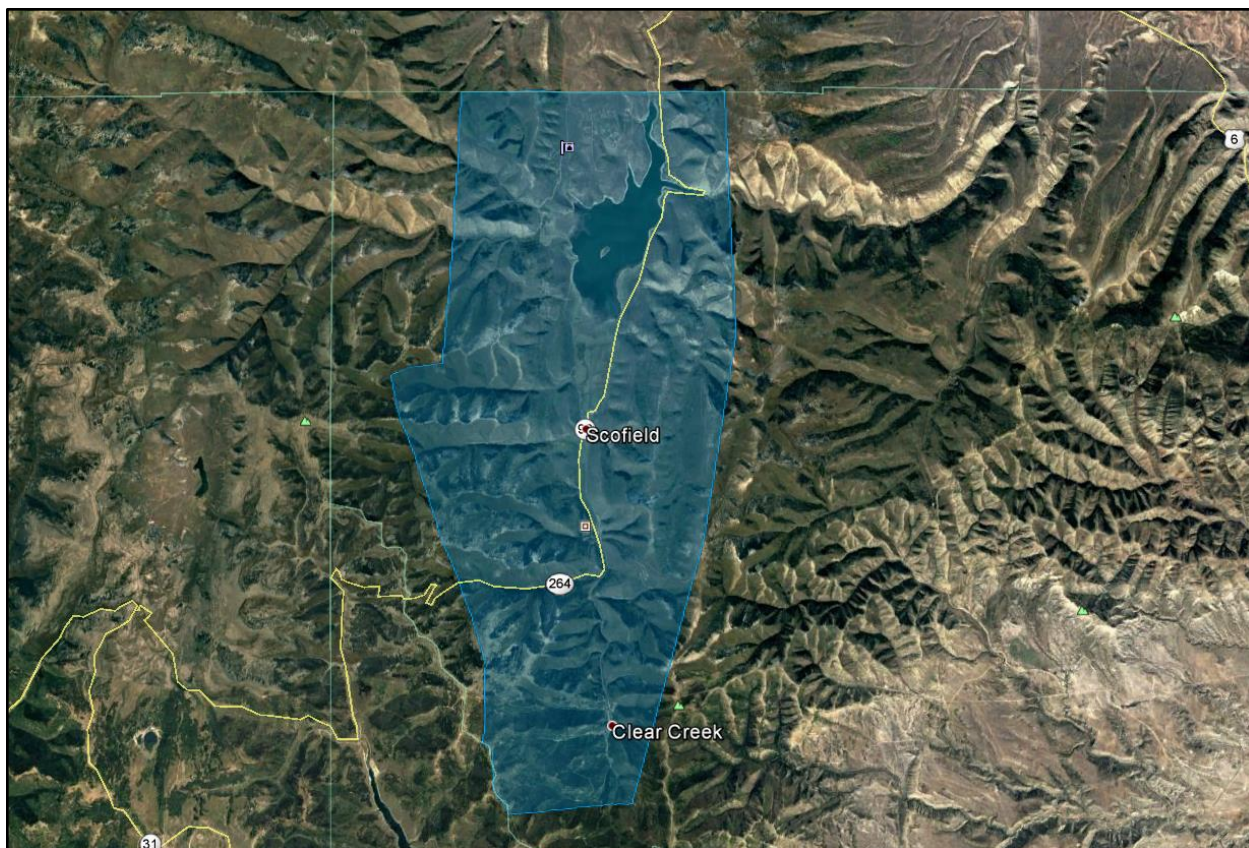


Figure 2: Scofield Area 2019 Existing Condition

Priority Area 1 (Scofield) Goals and Specific Actions

- A. Decrease fuels around key areas within and around communities to reduce wildfire intensity and impact.
- B. Work with state and federal agencies to decrease fuels on adjacent public land to reduce wildfire intensity and impact.
- C. Evaluate, improve, and maintain community wildfire preparations and response facilities/equipment.
- D. Coordinate with communities to develop a comprehensive emergency response plan.
- E. Train community leaders and educate community members to prepare for and respond to wildfire.
- F. Actively address identified regulatory issues impacting community wildfire prevention and response needs.
- G. Maintain the commitment to regularly evaluate, update, and maintain planning commitments.

Goal A: Decrease fuels around key areas within and around communities to reduce wildfire intensity and impact.

Year 0-2	Management Action	Responsibility	*Priority:
1	Encourage individual lot cleanup and creation of defensible space. Provide guidance and inspection as needed, and involve service organizations.	<ul style="list-style-type: none"> Carbon County Land Owners Service Organizations 	High
2	Work with landowners and service organizations to	<ul style="list-style-type: none"> Carbon County 	High

	create defensible spaces around unoccupied or abandoned lots.	<ul style="list-style-type: none"> Land Owners Service Organizations 	
3	Implement community roadside mowing/reseeding projects.	<ul style="list-style-type: none"> Carbon County Community Leaders Land Owners 	High
4	Evaluate fuel loading around communities and identify priority areas for fuel reduction treatments.	<ul style="list-style-type: none"> Carbon County Community Leaders 	Moderate
5	Begin fuel reduction treatments in previously-identified priority areas.	<ul style="list-style-type: none"> Carbon County Community Leaders Land Owners 	Moderate
6	Designate community burn/chipping days and assist residents in removal of fuels from their properties.	<ul style="list-style-type: none"> Carbon County Community Leaders 	Moderate
7	Develop a list of residential properties and businesses with gps coordinates to provide to emergency responders.	<ul style="list-style-type: none"> Carbon County Community Leaders Emergency Response Entities 	High
Year 2-5	Management Action	Responsibility	*Priority:
1	Reduce undesirable fuels adjacent to riparian areas to reduce fire impacts and maintain channel stability.	<ul style="list-style-type: none"> Carbon County 	Low
2	Control noxious weeds that contribute to fire hazard.	<ul style="list-style-type: none"> Carbon County County Weed Dept 	Moderate
3	Manage vegetation adjacent to roadways, trails, and railroad lines to prevent wildfire ignitions or to interrupt contiguous fuels.	<ul style="list-style-type: none"> Carbon County Community Leaders 	Moderate
4	Maintain clear zones for utility corridors and infrastructure.	<ul style="list-style-type: none"> Carbon County Utility Companies Utility Operators 	High
5	Work with landowners to firesafe their propane tanks.	<ul style="list-style-type: none"> Carbon County Propane Provider 	High
Year 5-10	Management Action	Responsibility	*Priority:
1	Reduce beetle-killed timber within and adjacent to the community	<ul style="list-style-type: none"> Carbon County Community Leaders Land Owners 	Moderate
2	Designate community shooting areas and create/enforce ordinances to prevent firearm ignitions.	<ul style="list-style-type: none"> Carbon County Community Leaders 	Moderate

*Priority was designated by assessing the estimated value of the resources being protected by the management action. The higher the value of the resource being protected, the higher the priority.

<i>Goal B: Work with state and federal agencies to decrease fuels on adjacent public land to reduce wildfire intensity and impact.</i>			
Year 0-2	Management Action	Responsibility	*Priority:
1	Work with agencies to evaluate priority areas for fuel reduction treatments.	<ul style="list-style-type: none"> • Carbon County • Community Leaders • BLM • USFS • FFSL • SITLA • UDWR • UDOT 	High
2	Assist agencies in identifying pinyon-juniper woodlands adjacent to WUI for treatment.	<ul style="list-style-type: none"> • Carbon County • Community Leaders • BLM • USFS • FFSL • SITLA • UDWR 	High
3	Prevent noxious/invasive weed proliferation through management, control, and reduction.	<ul style="list-style-type: none"> • Carbon County • BLM • USFS • SITLA • UDWR 	High
4	Manage mining and oil/gas operations to prevent wildfire ignitions and for the protection of their operations.	<ul style="list-style-type: none"> • Carbon County • USFS • BLM • UDOGM 	High
5	Assist UDOT and railroad company in identifying areas along major transportation corridors that need fuels maintenance.	<ul style="list-style-type: none"> • Carbon County • UDOT • Railway Owners 	Moderate
6	Coordinate with agencies to plan upcoming fuel reduction treatments and offer county support to implement the treatments.	<ul style="list-style-type: none"> • Carbon County • Community Leaders • BLM • USFS • FFSL • SITLA • UDWR 	Moderate
Year 2-5	Management Action	Responsibility	*Priority:

1	Conduct fuel reduction treatments on USFS-administered land in high-priority areas.	<ul style="list-style-type: none"> Carbon County USFS 	High
2	Conduct fuel reduction treatments on BLM-administered land in high-priority areas.	<ul style="list-style-type: none"> Carbon County BLM 	High
3	Conduct fuel reduction treatments on State-managed land in high-priority areas.	<ul style="list-style-type: none"> Carbon County FFSL SITLA UDWR 	High
4	Reduce undesirable fuels adjacent to riparian areas to reduce fire impacts and maintain channel stability.	<ul style="list-style-type: none"> Carbon County Land Owners Appropriate agencies 	Low
5	Manage vegetation adjacent to roadways, trails, and railroad lines to prevent wildfire ignitions and to create green strips and fuel breaks.	<ul style="list-style-type: none"> Carbon County Land Owners Appropriate agencies 	Moderate
6	Manage recreation (trails, campsites, etc.) to prevent wildfire ignitions and to reduce fuel loading.	<ul style="list-style-type: none"> Carbon County Land Owners Appropriate agencies 	Moderate
7	Maintain clear zones for utility corridors and infrastructure.	<ul style="list-style-type: none"> Carbon County Utility Companies Utility Operators 	High
8	Support wildlife habitat improvement projects that also reduce wildfire risk.	<ul style="list-style-type: none"> Carbon County Appropriate Agencies 	Moderate
9	Support agencies in post-fire rehabilitation/watershed restoration projects to reduce adverse impacts after fires.	<ul style="list-style-type: none"> Carbon County Appropriate Agencies 	High
Year 5-10	Management Action	Responsibility	*Priority:
1	Reduce beetle-killed timber within and adjacent to the community	<ul style="list-style-type: none"> Carbon County Appropriate Agencies 	Moderate
2	Designate community shooting areas and create/enforce ordinances to prevent firearm ignitions.	<ul style="list-style-type: none"> Carbon County Appropriate Agencies 	Moderate

*Priority was designated by assessing the estimated value of the resources being protected by the management action. The higher the value of the resource being protected, the higher the priority.

<i>Goal C: Evaluate, improve, and maintain community wildfire preparations and response facilities/equipment.</i>			
Year 0-2	Management Action	Responsibility	*Priority:

1	Work with community leaders to evaluate community wildfire preparedness and identify deficiencies (e.g., manpower, equipment, infrastructure, etc.).	<ul style="list-style-type: none"> Carbon County Community Leaders/Fire Professionals 	High
2	Assist communities in correcting or mitigating community wildfire preparedness deficiencies as needed.	<ul style="list-style-type: none"> Carbon County Community Leaders 	High
3	Identify existing fuel breaks and propose other strategic fuel break locations.	<ul style="list-style-type: none"> Carbon County Community Leaders/Fire Professionals 	High
4	Construct fuel breaks in priority areas.	<ul style="list-style-type: none"> Carbon County 	Moderate
5	Inspect and test all hydrants, hoses, and equipment to ensure/maintain proper function.	<ul style="list-style-type: none"> Carbon County Community Fire Professionals 	High
6	Identify GPS coordinates for available water sources for fire suppression.	<ul style="list-style-type: none"> Carbon County Community Leaders Emergency Response Entities 	High
7	Identify suitable escape routes for residents and emergency response personnel.	<ul style="list-style-type: none"> Carbon County Community Leaders Emergency Response Entities 	High
Year 2-5	Management Action	Responsibility	*Priority:
1	Review community signage to ensure escape routes and safe areas are clearly signed with fire resistant sign materials.	<ul style="list-style-type: none"> Carbon County Community Leaders Emergency Response Entities 	Moderate
2	Evaluate bridges and culverts to ensure that the weight of emergency vehicles can be supported.	<ul style="list-style-type: none"> Carbon County Community Leaders Emergency Response Entities 	Moderate
3	Work to anticipate future community growth and identify additional fire suppression resources that will be required in the future.	<ul style="list-style-type: none"> Carbon County Community Leaders Emergency Response Entities 	Moderate
Year 5-10	Management Action	Responsibility	*Priority:
1	Acquire additional fire suppression resources as dictated by anticipated needs.	<ul style="list-style-type: none"> Carbon County Community Leaders Emergency Response 	Moderate

		Entities	
--	--	----------	--

*Priority was designated by assessing the estimated value of the resources being protected by the management action. The higher the value of the resource being protected, the higher the priority.

<i>Goal D: Coordinate with communities to develop a comprehensive emergency response plan</i>			
Year 0-2	Management Action	Responsibility	*Priority:
1	Develop an evacuation plan with safe areas.	<ul style="list-style-type: none"> Carbon County Community Leaders Emergency Response Entities 	High
2	Identify homebound residents or other persons needing additional assistance for emergency evacuation.	<ul style="list-style-type: none"> Carbon County Community Leaders Emergency Response Entities 	High
Year 2-5	Management Action	Responsibility	*Priority:
1	Develop reverse 911 notification system or other similar community communication plan.	<ul style="list-style-type: none"> Carbon County Community Leaders Emergency Response Entities 	Low
Year 5-10	Management Action	Responsibility	*Priority:
1	Maintain and revise evacuation plan as necessary	<ul style="list-style-type: none"> Carbon County Community Leaders Emergency Response Entities 	High

*Priority was designated by assessing the estimated value of the resources being protected by the management action. The higher the value of the resource being protected, the higher the priority.

<i>Goal E: Train community leaders and educate community members to prepare for and respond to wildfire</i>			
Year 0-2	Management Action	Responsibility	*Priority:
1	Educate the public on the emergency response plan and make it available to the public.	<ul style="list-style-type: none"> Carbon County Community Leaders 	High

2	Fire awareness campaign including brochures, videos, school assemblies, radio advertisements, demonstration areas, and advertised public meetings.	<ul style="list-style-type: none"> Carbon County Community Leaders Fire Professionals 	High
3	Schedule with residents and provide individual property assessments by a fire professional.	<ul style="list-style-type: none"> Carbon County Community Leaders Fire Professionals 	Moderate
4	Hold annual community wildfire preparedness meetings just prior to annual county CWPP review meeting during late spring.	<ul style="list-style-type: none"> Carbon County Community Leaders Fire Professionals 	High
5	Distribute annual flier with dates of trainings, areas of special concern, anticipated fireworks restrictions, etc.	<ul style="list-style-type: none"> Carbon County Community Leaders 	Moderate
Year 2-5	Management Action	Responsibility	*Priority:
1	Promote improved house address signage.	<ul style="list-style-type: none"> Carbon County Community Leaders 	Low
2	Develop and implement plan to educate new homeowners about emergency response plan.	<ul style="list-style-type: none"> Carbon County Community Leaders 	Low
3	Partner with agencies to provide basic and advanced trainings for community officials and fire professionals.	<ul style="list-style-type: none"> Carbon County Community Leaders Fire Professionals FFSL USFS BLM 	High
4	Hold annual community wildfire preparedness meetings just prior to annual county CWPP review meeting during early summer.	<ul style="list-style-type: none"> Carbon County Community Leaders Fire Professionals 	High
5	Distribute annual flier with dates of trainings, areas of special concern, anticipated fireworks restrictions, etc.	<ul style="list-style-type: none"> Carbon County Community Leaders 	Moderate
Year 5-10	Management Action	Responsibility	*Priority:
1	Hold annual community wildfire preparedness meetings just prior to annual county CWPP review meeting during late spring.	<ul style="list-style-type: none"> Carbon County Community Leaders Fire Professionals 	High
2	Distribute annual flier with dates of trainings, areas of special concern, anticipated fireworks restrictions, etc.	<ul style="list-style-type: none"> Carbon County Community Leaders 	Moderate

*Priority was designated by assessing the estimated value of the resources being protected by the management action. The higher the value of the resource being protected, the higher the priority.

Goal F: Actively address identified regulatory issues impacting community wildfire prevention and response needs

Year 0-2	Management Action	Responsibility	*Priority:
1	Review and revise or create county ordinances for weed management.	<ul style="list-style-type: none"> Carbon County Community Leaders 	Moderate
2	Work with community leaders to review current ordinances to determine fire protection needs.	<ul style="list-style-type: none"> Carbon County Community Leaders 	High
3	Promote ordinances that address fire protection needs.	<ul style="list-style-type: none"> Carbon County Community Leaders Fire Professionals 	High
Year 2-5	Management Action	Responsibility	*Priority:
1	Promote zoning guidelines that promote adequate space for fire equipment movement and access.	<ul style="list-style-type: none"> Carbon County Community Leaders Fire Professionals 	Low
2	Require fire protection measures in all new commercial and residential construction, including fuel breaks, fire-resistant building materials, etc.	<ul style="list-style-type: none"> Carbon County Community Leaders Fire Professionals 	High

*Priority was designated by assessing the estimated value of the resources being protected by the management action. The higher the value of the resource being protected, the higher the priority.

Goal G: Maintain the commitment to regularly evaluate, update, and maintain planning commitments

Year 0-2	Management Action	Responsibility	*Priority:
1	Review goals and actions in CWPP annually and update as needed.	<ul style="list-style-type: none"> All Stakeholders 	High
2	Review vegetation maintenance schedule and alter as needed.	<ul style="list-style-type: none"> Carbon County Appropriate Agencies 	High
Year 2-5	Management Action	Responsibility	*Priority:
1	Review goals and actions in CWPP annually - and update as needed.	<ul style="list-style-type: none"> All Stakeholders 	High
2	Review vegetation maintenance schedule and alter as	<ul style="list-style-type: none"> Carbon County 	High

	needed.	<ul style="list-style-type: none"> • Appropriate Agencies 	
Year 5-10	Management Action	Responsibility	*Priority:
1	Review goals and actions in CWPP annually and update as needed.	<ul style="list-style-type: none"> • All Stakeholders 	High
2	Review vegetation maintenance schedule and alter as needed.	<ul style="list-style-type: none"> • Carbon County • Appropriate Agencies 	High

*Priority was designated by assessing the estimated value of the resources being protected by the management action. The higher the value of the resource being protected, the higher the priority.

Priority Area 2: Beaver Creek Area

Priority Area 2 includes approximately 79,000 acres of land, which is located west of US-6, extending westward to the boundary of Priority Area 1 and southward for approximately 12 miles from the Carbon-Utah County line (see Figures 1 and 3). There are currently only a few unincorporated residential developments within Priority Area 2; however, the area has potential for further residential and recreational growth. There are currently no existing fire suppression capabilities within this priority area; however, other resources may be utilized for fire suppression, including firefighting resources from Helper, two county-owned 4,000 gallon water tenders, county-owned bulldozers and graders, as well as state and federally-owned fire engines.

Currently, much of the area is used for recreation. Elevation ranges from approximately 6,000 to 9,800 feet above sea level, and vegetation in the area is primarily composed of sagebrush steppe, mountain brush, and higher-elevation forest types. Residential areas are surrounded by dense timber stands that have experienced beetle-kill, as well as a dense understory that could provide ladder fuels. Existing fire breaks include mosaics of vegetation consisting of low, sparse shrubs and grasses; there are very few established roads in this priority area that may adequately function as a fuel break. Water sources for fire suppression activities could include Scofield Reservoir, the Price River, or Beaver Creek.

According to the UWRAP data, this area has a relatively low wildfire risk and threat, likely because of higher precipitation totals, few established roadways, and a mosaic of vegetation types that may form natural fuel breaks. However, recreation in this area may increase the probability of campfire-ignition wildfires. New developments constructed adjacent to vegetative fuels may also increase the probability of wildfire. According to the UWRAP data, there have not been any recorded major wildfires within this priority area during the past 20 years, but analysis of other sources may reveal a more-comprehensive fire history of the area. Due to the steep terrain, the limited accessible roadways, and the lack of fire suppression resources in this area, ground response to wildfires is expected to be somewhat slow and limited to accessible areas.

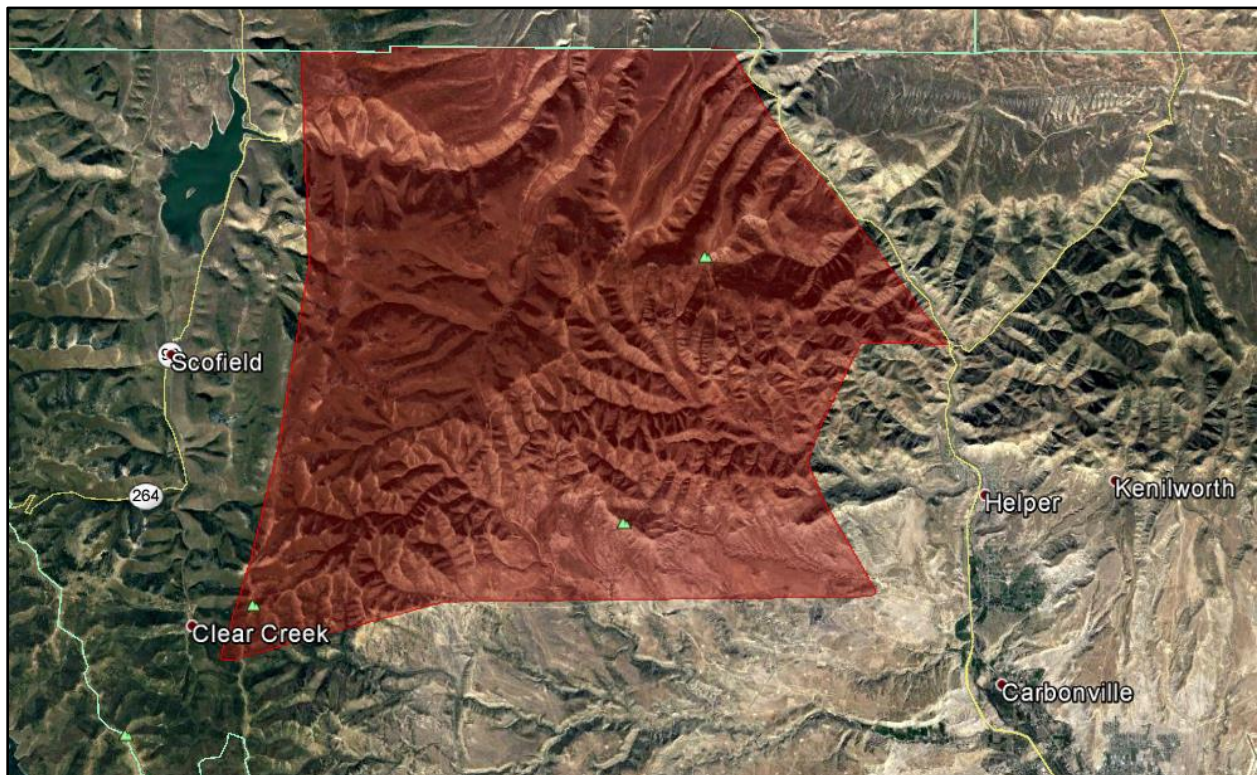


Figure 3: Beaver Creek Area 2019 Existing Condition

Priority Area 2 (Beaver Creek Area) Goals and Specific Actions

- A. Decrease fuels around key areas within and around communities to reduce wildfire intensity and impact
- B. Work with state and federal agencies to decrease fuels on adjacent public land to reduce wildfire intensity and impact
- C. Evaluate, improve, and maintain community wildfire preparations and response facilities/equipment
- D. Coordinate with communities to develop a comprehensive emergency response plan
- E. Train community leaders and educate community members to prepare for and respond to wildfire
- F. Actively address identified regulatory issues impacting community wildfire prevention and response needs
- G. Maintain the commitment to regularly evaluate, update, and maintain planning commitments

<i>Goal A: Decrease fuels around key areas within and around communities to reduce wildfire intensity and impact</i>			
Year 0-2	Management Action	Responsibility	*Priority:
1	Encourage individual lot cleanup and creation of defensible space. Provide guidance and inspection as needed, and involve service organizations.	<ul style="list-style-type: none"> Carbon County Land Owners Service Organizations 	High
2	Work with landowners and service organizations to create defensible spaces around unoccupied or abandoned lots.	<ul style="list-style-type: none"> Carbon County Land Owners Service Organizations 	High
3	Implement community roadside mowing/reseeding projects.	<ul style="list-style-type: none"> Carbon County Community Leaders Land Owners 	High
4	Evaluate fuel loading around communities and identify priority areas for fuel reduction treatments.	<ul style="list-style-type: none"> Carbon County Community Leaders 	Moderate
5	Begin fuel reduction treatments in previously-identified priority areas.	<ul style="list-style-type: none"> Carbon County Community Leaders Land Owners 	Moderate
6	Designate community burn/chipping days and assist residents in removal of fuels from their properties.	<ul style="list-style-type: none"> Carbon County Community Leaders 	Moderate
7	Develop a list of residential properties and businesses with gps coordinates to provide to emergency responders.	<ul style="list-style-type: none"> Carbon County Community Leaders Emergency Response Entities 	High
Year 2-5	Management Action	Responsibility	*Priority:
1	Reduce undesirable fuels adjacent to riparian areas	<ul style="list-style-type: none"> Carbon County 	Low

	to reduce fire impacts and maintain channel stability.		
2	Control noxious weeds that contribute to fire hazard.	<ul style="list-style-type: none"> Carbon County County Weed Dept 	Moderate
3	Manage vegetation adjacent to roadways, trails, and railroad lines to prevent wildfire ignitions or to interrupt contiguous fuels.	<ul style="list-style-type: none"> Carbon County Community Leaders 	Moderate
4	Maintain clear zones for utility corridors and infrastructure.	<ul style="list-style-type: none"> Carbon County Utility Companies Utility Operators 	High
5	Work with landowners to firesafe their propane tanks.	<ul style="list-style-type: none"> Carbon County Propane Provider 	High
Year 5-10	Management Action	Responsibility	*Priority:
1	Reduce beetle-killed timber within and adjacent to the community	<ul style="list-style-type: none"> Carbon County Community Leaders Land Owners 	Moderate
2	Designate community shooting areas and create/enforce ordinances to prevent firearm ignitions.	<ul style="list-style-type: none"> Carbon County Community Leaders 	Moderate

*Priority was designated by assessing the estimated value of the resources being protected by the management action. The higher the value of the resource being protected, the higher the priority.

<i>Goal B: Work with state and federal agencies to decrease fuels on adjacent public land to reduce wildfire intensity and impact</i>			
Year 0-2	Management Action	Responsibility	*Priority:
1	Work with agencies to evaluate priority areas for fuel reduction treatments.	<ul style="list-style-type: none"> Carbon County Community Leaders BLM USFS FFSL SITLA UDWR UDOT 	High
2	Assist agencies in identifying pinyon-juniper	<ul style="list-style-type: none"> Carbon County 	High

	woodlands adjacent to WUI for treatment.	<ul style="list-style-type: none"> • Community Leaders • BLM • USFS • FFSL • SITLA • UDWR 	
3	Prevent noxious/invasive weed proliferation through management, control, and reduction.	<ul style="list-style-type: none"> • Carbon County • BLM • USFS • SITLA • UDWR 	High
4	Manage mining and oil/gas operations to prevent wildfire ignitions and for the protection of their operations.	<ul style="list-style-type: none"> • Carbon County • USFS • BLM • UDOGM 	High
5	Assist UDOT and railroad company in identifying areas along major transportation corridors that need fuels maintenance.	<ul style="list-style-type: none"> • Carbon County • UDOT • Railway Owners 	Moderate
6	Coordinate with agencies to plan upcoming fuel reduction treatments and offer county support to implement the treatments.	<ul style="list-style-type: none"> • Carbon County • Community Leaders • BLM • USFS • FFSL • SITLA • UDWR 	Moderate
Year 2-5	Management Action	Responsibility	*Priority:
1	Conduct fuel reduction treatments on USFS-administered land in high-priority areas.	<ul style="list-style-type: none"> • Carbon County • USFS 	High
2	Conduct fuel reduction treatments on BLM-administered land in high-priority areas.	<ul style="list-style-type: none"> • Carbon County • BLM 	High
3	Conduct fuel reduction treatments on State-managed land in high-priority areas.	<ul style="list-style-type: none"> • Carbon County • FFSL • SITLA • UDWR 	High
4	Reduce undesirable fuels adjacent to riparian areas to reduce fire impacts and maintain channel stability.	<ul style="list-style-type: none"> • Carbon County • Land Owners • Appropriate agencies 	Low
5	Manage vegetation adjacent to roadways, trails, and railroad lines to prevent wildfire ignitions and to	<ul style="list-style-type: none"> • Carbon County • Land Owners 	Moderate

	create green strips and fuel breaks.	<ul style="list-style-type: none"> • Appropriate agencies 	
6	Manage recreation (trails, campsites, etc.) to prevent wildfire ignitions and to reduce fuel loading.	<ul style="list-style-type: none"> • Carbon County • Land Owners • Appropriate agencies 	Moderate
7	Maintain clear zones for utility corridors and infrastructure.	<ul style="list-style-type: none"> • Carbon County • Utility Companies • Utility Operators 	High
8	Support wildlife habitat improvement projects that also reduce wildfire risk.	<ul style="list-style-type: none"> • Carbon County • Appropriate Agencies 	Moderate
9	Support agencies in post-fire rehabilitation/watershed restoration projects to reduce adverse impacts after fires.	<ul style="list-style-type: none"> • Carbon County • Appropriate Agencies 	High
Year 5-10	Management Action	Responsibility	*Priority:
1	Reduce beetle-killed timber within and adjacent to the community	<ul style="list-style-type: none"> • Carbon County • Appropriate Agencies 	Moderate
2	Designate community shooting areas and create/enforce ordinances to prevent firearm ignitions.	<ul style="list-style-type: none"> • Carbon County • Appropriate Agencies 	Moderate

*Priority was designated by assessing the estimated value of the resources being protected by the management action. The higher the value of the resource being protected, the higher the priority.

<i>Goal C: Evaluate, improve, and maintain community wildfire preparations and response facilities/equipment</i>			
Year 0-2	Management Action	Responsibility	*Priority:
1	Work with community leaders to evaluate community wildfire preparedness and identify deficiencies (e.g., manpower, equipment, infrastructure, etc.).	<ul style="list-style-type: none"> • Carbon County • Community Leaders/Fire Professionals 	High
2	Assist communities in correcting or mitigating community wildfire preparedness deficiencies as	<ul style="list-style-type: none"> • Carbon County • Community 	High

	needed.	Leaders	
3	Identify existing fuel breaks and propose other strategic fuel break locations.	<ul style="list-style-type: none"> Carbon County Community Leaders/Fire Professionals 	High
4	Construct fuel breaks in priority areas.	<ul style="list-style-type: none"> Carbon County 	Moderate
5	Inspect and test all fire suppression equipment.	<ul style="list-style-type: none"> Carbon County Community Fire Professionals 	High
6	Identify GPS coordinates for available water sources for fire suppression.	<ul style="list-style-type: none"> Carbon County Community Leaders Emergency Response Entities 	High
7	Identify suitable escape routes for residents and emergency response personnel.	<ul style="list-style-type: none"> Carbon County Community Leaders Emergency Response Entities 	High
Year 2-5	Management Action	Responsibility	*Priority:
1	Review community signage to ensure escape routes and safe areas are clearly signed with fire resistant sign materials.	<ul style="list-style-type: none"> Carbon County Community Leaders Emergency Response Entities 	Moderate
2	Evaluate bridges and culverts to ensure that the weight of emergency vehicles can be supported.	<ul style="list-style-type: none"> Carbon County Community Leaders Emergency Response Entities 	Moderate
3	Work to anticipate future community growth and identify additional fire suppression resources that will be required in the future.	<ul style="list-style-type: none"> Carbon County Community Leaders Emergency Response Entities 	Moderate
Year 5-10	Management Action	Responsibility	*Priority:

1	Acquire additional fire suppression resources as dictated by anticipated needs.	<ul style="list-style-type: none"> • Carbon County • Community Leaders • Emergency Response Entities 	Moderate
---	---	---	----------

*Priority was designated by assessing the estimated value of the resources being protected by the management action. The higher the value of the resource being protected, the higher the priority.

<i>Goal D: Coordinate with communities to develop a comprehensive emergency response plan</i>			
Year 0-2	Management Action	Responsibility	*Priority:
1	Develop an evacuation plan with safe areas.	<ul style="list-style-type: none"> • Carbon County • Community Leaders • Emergency Response Entities 	High
2	Identify homebound residents or other persons needing additional assistance for emergency evacuation.	<ul style="list-style-type: none"> • Carbon County • Community Leaders • Emergency Response Entities 	High
Year 2-5	Management Action	Responsibility	*Priority:
1	Develop reverse 911 notification system or other similar community communication plan.	<ul style="list-style-type: none"> • Carbon County • Community Leaders • Emergency Response Entities 	Low
Year 5-10	Management Action	Responsibility	*Priority:
1	Maintain and revise evacuation plan as necessary	<ul style="list-style-type: none"> • Carbon County • Community Leaders • Emergency Response Entities 	High

*Priority was designated by assessing the estimated value of the resources being protected by the management action. The higher the value of the resource being protected, the higher the priority.

<i>Goal E: Train community leaders and educate community members to prepare for and respond to wildfire</i>			
Year 0-2	Management Action	Responsibility	*Priority:
1	Educate the public on the emergency response plan and make it available to the public.	<ul style="list-style-type: none"> Carbon County Community Leaders 	High
2	Fire awareness campaign including brochures, videos, school assemblies, radio advertisements, demonstration areas, and advertised public meetings.	<ul style="list-style-type: none"> Carbon County Community Leaders Fire Professionals 	High
3	Schedule with residents and provide individual property assessments by a fire professional.	<ul style="list-style-type: none"> Carbon County Community Leaders Fire Professionals 	Moderate
4	Hold annual community wildfire preparedness meetings just prior to annual county CWPP review meeting during late spring.	<ul style="list-style-type: none"> Carbon County Community Leaders Fire Professionals 	High
5	Distribute annual flier with dates of trainings, areas of special concern, anticipated fireworks restrictions, etc.	<ul style="list-style-type: none"> Carbon County Community Leaders 	Moderate
Year 2-5	Management Action	Responsibility	*Priority:
1	Promote improved house address signage.	<ul style="list-style-type: none"> Carbon County Community Leaders 	Low
2	Develop and implement plan to educate new homeowners about emergency response plan.	<ul style="list-style-type: none"> Carbon County Community Leaders 	Low
3	Partner with agencies to provide basic and advanced trainings for community officials and fire professionals.	<ul style="list-style-type: none"> Carbon County Community Leaders 	High

		<ul style="list-style-type: none"> • Fire Professionals • FFSL • USFS • BLM 	
4	Hold annual community wildfire preparedness meetings just prior to annual county CWPP review meeting during late spring.	<ul style="list-style-type: none"> • Carbon County • Community Leaders • Fire Professionals 	High
5	Distribute annual flier with dates of trainings, areas of special concern, anticipated fireworks restrictions, etc.	<ul style="list-style-type: none"> • Carbon County • Community Leaders 	Moderate
Year 5-10	Management Action	Responsibility	*Priority:
1	Hold annual community wildfire preparedness meetings just prior to annual county CWPP review meeting during late spring.	<ul style="list-style-type: none"> • Carbon County • Community Leaders • Fire Professionals 	High
2	Distribute annual flier with dates of trainings, areas of special concern, anticipated fireworks restrictions, etc.	<ul style="list-style-type: none"> • Carbon County • Community Leaders 	Moderate

*Priority was designated by assessing the estimated value of the resources being protected by the management action. The higher the value of the resource being protected, the higher the priority.

<i>Goal F: Actively address identified regulatory issues impacting community wildfire prevention and response needs</i>			
Year 0-2	Management Action	Responsibility	*Priority:
1	Review and revise or create county ordinances for weed management.	<ul style="list-style-type: none"> • Carbon County • Community Leaders 	Moderate
2	Work with community leaders to review current ordinances to determine fire protection needs.	<ul style="list-style-type: none"> • Carbon County • Community Leaders 	High
3	Promote ordinances that address fire protection needs.	<ul style="list-style-type: none"> • Carbon County • Community Leaders • Fire Professionals 	High

Year 2-5	Management Action	Responsibility	*Priority:
1	Promote zoning guidelines that promote adequate space for fire equipment movement and access.	<ul style="list-style-type: none"> • Carbon County • Community Leaders • Fire Professionals 	Low
2	Require fire protection measures in all new commercial and residential construction, including fuel breaks, fire-resistant building materials, etc.	<ul style="list-style-type: none"> • Carbon County • Community Leaders • Fire Professionals 	High

*Priority was designated by assessing the estimated value of the resources being protected by the management action. The higher the value of the resource being protected, the higher the priority.

<i>Goal G: Maintain the commitment to regularly evaluate, update, and maintain planning commitments</i>			
Year 0-2	Management Action	Responsibility	*Priority:
1	Review goals and actions in CWPP annually (during late spring) and update as needed.	<ul style="list-style-type: none"> • All Stakeholders 	High
2	Review vegetation maintenance schedule and alter as needed.	<ul style="list-style-type: none"> • Carbon County • Appropriate Agencies 	High
Year 2-5	Management Action	Responsibility	*Priority:
1	Review goals and actions in CWPP annually (during late spring) and update as needed.	<ul style="list-style-type: none"> • All Stakeholders 	High
2	Review vegetation maintenance schedule and alter as needed.	<ul style="list-style-type: none"> • Carbon County • Appropriate Agencies 	High
Year 5-10	Management Action	Responsibility	*Priority:
1	Review goals and actions in CWPP annually (during late spring) and update as needed.	<ul style="list-style-type: none"> • All Stakeholders 	High
2	Review vegetation maintenance schedule and alter as needed.	<ul style="list-style-type: none"> • Carbon County • Appropriate 	High

		Agencies	
--	--	----------	--

*Priority was designated by assessing the estimated value of the resources being protected by the management action. The higher the value of the resource being protected, the higher the priority.

Priority Area 3: Hiawatha Area

Priority Area 3 includes approximately 116,000 acres of land, which extends from the southwest corner of Carbon County approximately 13 miles to the north and approximately 15 miles to the east (see Figures 1 and 4). Small agricultural communities exist within this priority area in the vicinity of Ridge Road and Gordon Creek; these communities are accessible year-round. There is also potential for residential development within the priority area. There are currently no existing fire suppression capabilities within this priority area; however, other resources may be utilized for fire suppression, including two county-owned 4,000 gallon water tenders, county-owned bulldozers and graders, as well as state and federally-owned fire engines.

Much of the area is used by the extraction industry, as well as for recreation purposes. Many gravel roads between well pads checkerboard the low to mid-elevation areas. Elevation ranges greatly from approximately 5,600 to 10,100 feet above sea level, and vegetation types also vary greatly with elevation; desert scrub/steppe occupies the lowest areas, pinyon-juniper woodlands and sagebrush steppe occupy the foothills at the intermediate elevations, and mountain brush and other forest types occupy the high elevation areas. Existing fire breaks include the many gravel roadways used for the extraction industry, as well as mosaics of vegetation consisting of low, sparse shrubs and grasses. Water sources for fire suppression activities could include Scofield Reservoir, the Price River, Gordon Creek, or the Carbon Canal.

According to the UWRAP data, this area has a relatively low wildfire risk and threat, likely due to the sparse vegetation types at the low to mid-elevation ranges that may form natural fuel breaks, and the lack of establish roadways in the steep, fuel-dense areas at high elevations. However, there are many well pads that are located adjacent to vegetative fuels, and could be a wildfire ignition source. Frequent truck traffic to and from the well pads may pose a wildfire risk as the UWRAP data seems to suggest that wildfire risk and threat are highly correlated with the location of major roadways. Recreation in this area may increase the probability of campfire-ignition wildfires, while new residential developments could also increase wildfire ignitions. Further, according to the UWRAP data, the area has experienced at least one major wildfire within the last 20 years (Seeley [2012]); analysis of other sources may reveal a more-comprehensive fire history of the area. The Seeley fire was ignited by lighting and burned 48,050 acres during 22 days.

Seven known BLM fuel reduction treatments have occurred within the project area, which targeted pinyon-juniper woodlands that were in closed-canopy conditions; these were likely either chainings or lop-and-scatter treatments, and seem to be associated with the location of well pads. Due to the steep terrain and the lack of fire suppression resources in this area, ground response to wildfires is expected to be somewhat slow. Access for fire suppression is good in the low to mid-elevation areas, but limited in the higher elevation areas.



Figure 4: Hiawatha Area 2019 Existing Condition

Priority Area 3 (Hiawatha Area) Goals and Specific Actions

- A. Decrease fuels around key areas within and around communities to reduce wildfire intensity and impact
- B. Work with state and federal agencies to decrease fuels on adjacent public land to reduce wildfire intensity and impact
- C. Evaluate, improve, and maintain community wildfire preparations and response facilities/equipment
- D. Coordinate with communities to develop a comprehensive emergency response plan
- E. Train community leaders and educate community members to prepare for and respond to wildfire
- F. Actively address identified regulatory issues impacting community wildfire prevention and response needs
- G. Maintain the commitment to regularly evaluate, update, and maintain planning commitments

Goal A: Decrease fuels around key areas within and around communities to reduce wildfire intensity and impact			
Year 0-2	Management Action	Responsibility	*Priority:
1	Encourage individual lot cleanup and creation of defensible space. Provide guidance and inspection as needed, and involve service organizations.	<ul style="list-style-type: none"> Carbon County Land Owners Service Organizations 	High
2	Work with landowners and service organizations to create defensible spaces around unoccupied or	<ul style="list-style-type: none"> Carbon County Land Owners 	High

	abandoned lots.	<ul style="list-style-type: none"> • Service Organizations 	
3	Implement community roadside mowing/reseeding projects.	<ul style="list-style-type: none"> • Carbon County • Community Leaders • Land Owners 	High
4	Evaluate fuel loading around communities and identify priority areas for fuel reduction treatments.	<ul style="list-style-type: none"> • Carbon County • Community Leaders 	Moderate
5	Begin fuel reduction treatments in previously-identified priority areas.	<ul style="list-style-type: none"> • Carbon County • Community Leaders • Land Owners 	Moderate
6	Designate community burn/chipping days and assist residents in removal of fuels from their properties.	<ul style="list-style-type: none"> • Carbon County • Community Leaders 	Moderate
7	Develop a list of residential properties and businesses with gps coordinates to provide to emergency responders.	<ul style="list-style-type: none"> • Carbon County • Community Leaders • Emergency Response Entities 	High
Year 2-5	Management Action	Responsibility	*Priority:
1	Reduce undesirable fuels adjacent to riparian areas to reduce fire impacts and maintain channel stability.	<ul style="list-style-type: none"> • Carbon County 	Low
2	Control noxious weeds that contribute to fire hazard.	<ul style="list-style-type: none"> • Carbon County • County Weed Dept 	Moderate
3	Manage vegetation adjacent to roadways, trails, and railroad lines to prevent wildfire ignitions or to interrupt contiguous fuels.	<ul style="list-style-type: none"> • Carbon County • Community Leaders 	Moderate
4	Maintain clear zones for utility corridors and infrastructure.	<ul style="list-style-type: none"> • Carbon County • Utility Companies • Utility Operators 	High
5	Work with landowners to firesafe their propane tanks.	<ul style="list-style-type: none"> • Carbon County • Propane Provider 	High
Year 5-10	Management Action	Responsibility	*Priority:
1	Designate community shooting areas and create/enforce ordinances to prevent firearm ignitions.	<ul style="list-style-type: none"> • Carbon County • Community Leaders 	Moderate

*Priority was designated by assessing the estimated value of the resources being protected by the management action. The higher the value of the resource being protected, the higher the priority.

Goal B: Work with state and federal agencies to decrease fuels on adjacent public land to reduce wildfire intensity and impact

Year 0-2	Management Action	Responsibility	*Priority:
1	Work with agencies to evaluate priority areas for fuel reduction treatments.	<ul style="list-style-type: none"> • Carbon County • Community Leaders • BLM • USFS • FFSL • SITLA • UDWR • UDOT 	High
2	Assist agencies in identifying pinyon-juniper woodlands adjacent to WUI for treatment.	<ul style="list-style-type: none"> • Carbon County • Community Leaders • BLM • USFS • FFSL • SITLA • UDWR 	High
3	Prevent noxious/invasive weed proliferation through management, control, and reduction.	<ul style="list-style-type: none"> • Carbon County • BLM • USFS • SITLA • UDWR 	High
4	Manage mining and oil/gas operations to prevent wildfire ignitions and for the protection of their operations.	<ul style="list-style-type: none"> • Carbon County • USFS • BLM • UDOGM 	High
5	Assist UDOT and railroad company in identifying areas along major transportation corridors that need fuels maintenance.	<ul style="list-style-type: none"> • Carbon County • UDOT • Railway Owners 	Moderate
6	Coordinate with agencies to plan upcoming fuel reduction treatments and offer county support to implement the treatments.	<ul style="list-style-type: none"> • Carbon County • Community Leaders • BLM • USFS • FFSL • SITLA • UDWR 	Moderate

Year 2-5	Management Action	Responsibility	*Priority:
1	Conduct fuel reduction treatments on USFS-administered land in high-priority areas.	<ul style="list-style-type: none"> • Carbon County • USFS 	High
2	Conduct fuel reduction treatments on BLM-administered land in high-priority areas.	<ul style="list-style-type: none"> • Carbon County • BLM 	High
3	Conduct fuel reduction treatments on State-managed land in high-priority areas.	<ul style="list-style-type: none"> • Carbon County • FFSL • SITLA • UDWR 	High
4	Reduce undesirable fuels adjacent to riparian areas to reduce fire impacts and maintain channel stability.	<ul style="list-style-type: none"> • Carbon County • Land Owners • Appropriate agencies 	Low
5	Manage vegetation adjacent to roadways, trails, and railroad lines to prevent wildfire ignitions and to create green strips and fuel breaks.	<ul style="list-style-type: none"> • Carbon County • Land Owners • Appropriate agencies 	Moderate
6	Manage recreation (trails, campsites, etc.) to prevent wildfire ignitions and to reduce fuel loading.	<ul style="list-style-type: none"> • Carbon County • Land Owners • Appropriate agencies 	Moderate
7	Maintain clear zones for utility corridors and infrastructure.	<ul style="list-style-type: none"> • Carbon County • Utility Companies • Utility Operators 	High
8	Support wildlife habitat improvement projects that also reduce wildfire risk.	<ul style="list-style-type: none"> • Carbon County • Appropriate Agencies 	Moderate
9	Support agencies in post-fire rehabilitation/watershed restoration projects to reduce adverse impacts after fires.	<ul style="list-style-type: none"> • Carbon County • Appropriate Agencies 	High
Year 5-10	Management Action	Responsibility	*Priority:
1	Designate community shooting areas and create/enforce ordinances to prevent firearm ignitions.	<ul style="list-style-type: none"> • Carbon County • Appropriate Agencies 	Moderate

*Priority was designated by assessing the estimated value of the resources being protected by the management action. The higher the value of the resource being protected, the higher the priority.

Goal C: Evaluate, improve, and maintain community wildfire preparations and response facilities/equipment

Year 0-2	Management Action	Responsibility	*Priority:
1	Work with community leaders to evaluate community wildfire preparedness and identify deficiencies (e.g., manpower, equipment, infrastructure, etc.).	<ul style="list-style-type: none"> Carbon County Community Leaders/Fire Professionals 	High
2	Assist communities in correcting or mitigating community wildfire preparedness deficiencies as needed.	<ul style="list-style-type: none"> Carbon County Community Leaders 	High
3	Identify existing fuel breaks and propose other strategic fuel break locations.	<ul style="list-style-type: none"> Carbon County Community Leaders/Fire Professionals 	High
4	Construct fuel breaks in priority areas.	<ul style="list-style-type: none"> Carbon County 	Moderate
5	Inspect and test all hydrants, hoses, and equipment to ensure/maintain proper function.	<ul style="list-style-type: none"> Carbon County Community Fire Professionals 	High
6	Identify GPS coordinates for available water sources for fire suppression.	<ul style="list-style-type: none"> Carbon County Community Leaders Emergency Response Entities 	High
7	Identify suitable escape routes for residents and emergency response personnel.	<ul style="list-style-type: none"> Carbon County Community Leaders Emergency Response Entities 	High
Year 2-5	Management Action	Responsibility	*Priority:
1	Review community signage to ensure escape routes and safe areas are clearly signed with fire resistant sign materials.	<ul style="list-style-type: none"> Carbon County Community Leaders Emergency Response Entities 	Moderate

2	Evaluate bridges and culverts to ensure that the weight of emergency vehicles can be supported.	<ul style="list-style-type: none"> • Carbon County • Community Leaders • Emergency Response Entities 	Moderate
3	Work to anticipate future community growth and identify additional fire suppression resources that will be required in the future.	<ul style="list-style-type: none"> • Carbon County • Community Leaders • Emergency Response Entities 	Moderate
Year 5-10	Management Action	Responsibility	*Priority:
1	Acquire additional fire suppression resources as dictated by anticipated needs.	<ul style="list-style-type: none"> • Carbon County • Community Leaders • Emergency Response Entities 	Moderate

*Priority was designated by assessing the estimated value of the resources being protected by the management action. The higher the value of the resource being protected, the higher the priority.

<i>Goal D: Coordinate with communities to develop a comprehensive emergency response plan</i>			
Year 0-2	Management Action	Responsibility	*Priority:
1	Develop an evacuation plan with safe areas.	<ul style="list-style-type: none"> • Carbon County • Community Leaders • Emergency Response Entities 	High
2	Identify homebound residents or other persons needing additional assistance for emergency evacuation.	<ul style="list-style-type: none"> • Carbon County • Community Leaders • Emergency Response Entities 	High
Year 2-5	Management Action	Responsibility	*Priority:

1	Develop reverse 911 notification system or other similar community communication plan.	<ul style="list-style-type: none"> • Carbon County • Community Leaders • Emergency Response Entities 	Low
Year 5-10	Management Action	Responsibility	*Priority:
1	Maintain and revise evacuation plan as necessary	<ul style="list-style-type: none"> • Carbon County • Community Leaders • Emergency Response Entities 	High

*Priority was designated by assessing the estimated value of the resources being protected by the management action. The higher the value of the resource being protected, the higher the priority.

<i>Goal E: Train community leaders and educate community members to prepare for and respond to wildfire</i>			
Year 0-2	Management Action	Responsibility	*Priority:
1	Educate the public on the emergency response plan and make it available to the public.	<ul style="list-style-type: none"> • Carbon County • Community Leaders 	High
2	Fire awareness campaign including brochures, videos, school assemblies, radio advertisements, demonstration areas, and advertised public meetings.	<ul style="list-style-type: none"> • Carbon County • Community Leaders • Fire Professionals 	High
3	Schedule with residents and provide individual property assessments by a fire professional.	<ul style="list-style-type: none"> • Carbon County • Community Leaders • Fire Professionals 	Moderate
4	Hold annual community wildfire preparedness meetings just prior to annual county CWPP review meeting during late spring.	<ul style="list-style-type: none"> • Carbon County • Community Leaders • Fire Professionals 	High
5	Distribute annual flier with dates of trainings, areas	<ul style="list-style-type: none"> • Carbon County 	Moderate

	of special concern, anticipated fireworks restrictions, etc.	<ul style="list-style-type: none"> Community Leaders 	
Year 2-5	Management Action	Responsibility	*Priority:
1	Promote improved house address signage.	<ul style="list-style-type: none"> Carbon County Community Leaders 	Low
2	Develop and implement plan to educate new homeowners about emergency response plan.	<ul style="list-style-type: none"> Carbon County Community Leaders 	Low
3	Partner with agencies to provide basic and advanced trainings for community officials and fire professionals.	<ul style="list-style-type: none"> Carbon County Community Leaders Fire Professionals FFSL USFS BLM 	High
4	Hold annual community wildfire preparedness meetings just prior to annual county CWPP review meeting during late spring.	<ul style="list-style-type: none"> Carbon County Community Leaders Fire Professionals 	High
5	Distribute annual flier with dates of trainings, areas of special concern, anticipated fireworks restrictions, etc.	<ul style="list-style-type: none"> Carbon County Community Leaders 	Moderate
Year 5-10	Management Action	Responsibility	*Priority:
1	Hold annual community wildfire preparedness meetings just prior to annual county CWPP review meeting during late spring.	<ul style="list-style-type: none"> Carbon County Community Leaders Fire Professionals 	High
2	Distribute annual flier with dates of trainings, areas of special concern, anticipated fireworks restrictions, etc.	<ul style="list-style-type: none"> Carbon County Community Leaders 	Moderate

*Priority was designated by assessing the estimated value of the resources being protected by the management action. The higher the value of the resource being protected, the higher the priority.

Goal F: Actively address identified regulatory issues impacting community wildfire prevention and response needs

Year 0-2	Management Action	Responsibility	*Priority:
1	Review and revise or create county ordinances for weed management.	<ul style="list-style-type: none"> Carbon County Community Leaders 	Moderate
2	Work with community leaders to review current ordinances to determine fire protection needs.	<ul style="list-style-type: none"> Carbon County Community Leaders 	High
3	Promote ordinances that address fire protection needs.	<ul style="list-style-type: none"> Carbon County Community Leaders Fire Professionals 	High
Year 2-5	Management Action	Responsibility	*Priority:
1	Promote zoning guidelines that promote adequate space for fire equipment movement and access.	<ul style="list-style-type: none"> Carbon County Community Leaders Fire Professionals 	Low
2	Require fire protection measures in all new commercial and residential construction, including fuel breaks, fire-resistant building materials, etc.	<ul style="list-style-type: none"> Carbon County Community Leaders Fire Professionals 	High

*Priority was designated by assessing the estimated value of the resources being protected by the management action. The higher the value of the resource being protected, the higher the priority.

<i>Goal G: Maintain the commitment to regularly evaluate, update, and maintain planning commitments</i>			
Year 0-2	Management Action	Responsibility	*Priority:
1	Review goals and actions in CWPP annually (during late spring) and update as needed.	<ul style="list-style-type: none"> All Stakeholders 	High
2	Review vegetation maintenance schedule and alter as needed.	<ul style="list-style-type: none"> Carbon County Appropriate Agencies 	High
Year	Management Action	Responsibility	*Priority:

2-5			
1	Review goals and actions in CWPP annually (during late spring) and update as needed.	<ul style="list-style-type: none"> All Stakeholders 	High
2	Review vegetation maintenance schedule and alter as needed.	<ul style="list-style-type: none"> Carbon County Appropriate Agencies 	High
Year 5-10	Management Action	Responsibility	*Priority:
1	Review goals and actions in CWPP annually (during late spring) and update as needed.	<ul style="list-style-type: none"> All Stakeholders 	High
2	Review vegetation maintenance schedule and alter as needed.	<ul style="list-style-type: none"> Carbon County Appropriate Agencies 	High

*Priority was designated by assessing the estimated value of the resources being protected by the management action. The higher the value of the resource being protected, the higher the priority.

Priority Area 4: Price River Corridor

Priority Area 4 includes approximately 72,000 acres of land, which encompasses the vast majority of the residential areas within or near the Price River corridor (see Figures 1 and 5). Communities within this priority area include Helper, Spring Glen, Kenilworth, Carbonville, Price, and Wellington; these communities are accessible year-round. Communities within this priority area have comparatively larger populations than communities within the other priority areas of the county, and are reasonably well-equipped with regards to fire suppression capabilities; Helper, Price, and Wellington have their own municipal fire departments, while Kenilworth and Carbonville are close enough to other municipalities to share fire suppression resources. Other fire suppression resources available for this priority area include two county-owned 4,000 gallon water tenders, county-owned bulldozers and graders, as well as state and federally-owned fire engines.

Much of this priority area is occupied by residential and commercial areas, as well as agricultural operations. Elevation ranges from approximately 5,300 to 8,700 feet above sea level, and vegetation types also vary with elevation; crop species and desert scrub/steppe occupy the lowest areas, while pinyon-juniper woodlands and sagebrush steppe occupy the foothills at the high elevation areas. Existing fire breaks include numerous active agricultural fields, irrigated lawns and landscaping, major roadways such as US-6, SR-10, and Ridge Road, mosaics of vegetation consisting of low, sparse shrubs and grasses, the Price River, and irrigation canals. Water sources for fire suppression activities could include the Price River, Gigliotti Pond, Carbon Canal, or Price Canal.

According to the UWRAP data, this area has a relatively high wildfire risk and threat, especially along major roadways and railways and in higher elevation areas that occur adjacent to the pinyon-juniper vegetation type. Wildfires adjacent to residential and commercial areas are likely to occur because of the inherent variety of ignition sources, including: debris burning, equipment use, children, and other miscellaneous sources (see Fire Occurrence section above). Frequent vehicle traffic along roadways and regularly scheduled trains could be a significant ignition source. Recreation in this area may also increase the probability of campfire-ignition wildfires. Further, according to the UWRAP data, the area has experienced at least one major wildfire within the last 20 years (Mathis [2007]); analysis of other sources may reveal a more-comprehensive fire history of the area. Due to the abundance of fire suppression resources and favorable vehicle access throughout the majority of the priority area, ground response to wildfires is expected to be somewhat rapid.

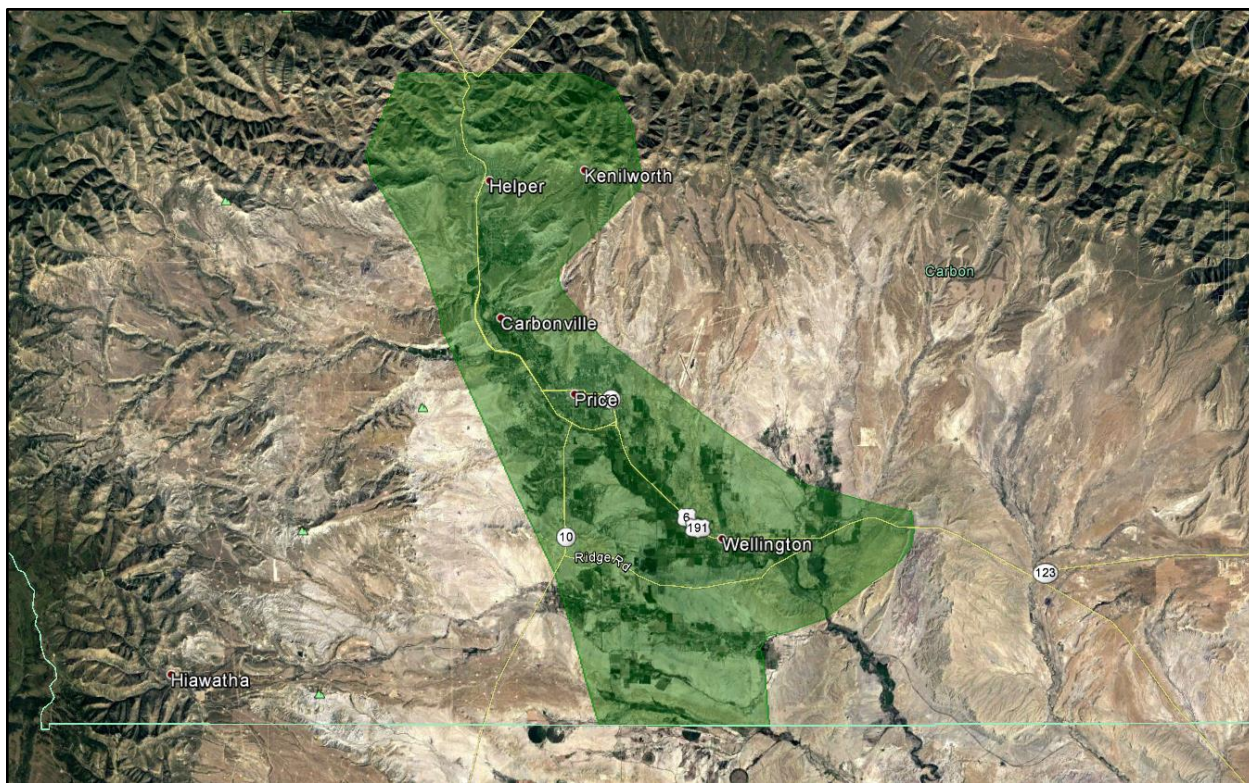


Figure 5: Price River Corridor 2019 Existing Condition

Priority Area 4 (Price River Corridor) Goals and Specific Actions

- A. Decrease fuels around key areas within and around communities to reduce wildfire intensity and impact.
- B. Work with state and federal agencies to decrease fuels on adjacent public land to reduce wildfire intensity and impact.
- C. Evaluate, improve, and maintain community wildfire preparations and response facilities/equipment.
- D. Coordinate with communities to develop a comprehensive emergency response plan.
- E. Train community leaders and educate community members to prepare for and respond to wildfire.
- F. Actively address identified regulatory issues impacting community wildfire prevention and response needs.
- G. Maintain the commitment to regularly evaluate, update, and maintain planning commitments.

<i>Goal A: Decrease fuels around key areas within and around communities to reduce wildfire intensity and impact</i>			
Year 0-2	Management Action	Responsibility	*Priority:
1	Encourage individual lot cleanup and creation of defensible space. Provide guidance and inspection as needed, and involve service organizations.	<ul style="list-style-type: none"> Carbon County Land Owners Service Organizations 	High
2	Work with landowners and service organizations to create defensible spaces around unoccupied or	<ul style="list-style-type: none"> Carbon County Land Owners 	High

	abandoned lots.	<ul style="list-style-type: none"> • Service Organizations 	
3	Implement community roadside mowing/reseeding projects.	<ul style="list-style-type: none"> • Carbon County • Community Leaders • Land Owners 	High
4	Evaluate fuel loading around communities and identify priority areas for fuel reduction treatments.	<ul style="list-style-type: none"> • Carbon County • Community Leaders 	Moderate
5	Begin fuel reduction treatments in previously-identified priority areas.	<ul style="list-style-type: none"> • Carbon County • Community Leaders • Land Owners 	Moderate
6	Designate community burn/chipping days and assist residents in removal of fuels from their properties.	<ul style="list-style-type: none"> • Carbon County • Community Leaders 	Moderate
7	Develop a list of residential properties and businesses with gps coordinates to provide to emergency responders.	<ul style="list-style-type: none"> • Carbon County • Community Leaders • Emergency Response Entities 	High
Year 2-5	Management Action	Responsibility	*Priority:
1	Reduce undesirable fuels adjacent to riparian areas to reduce fire impacts and maintain channel stability.	<ul style="list-style-type: none"> • Carbon County 	Low
2	Control noxious weeds that contribute to fire hazard.	<ul style="list-style-type: none"> • Carbon County • County Weed Dept 	Moderate
3	Manage vegetation adjacent to roadways, trails, and railroad lines to prevent wildfire ignitions or to interrupt contiguous fuels.	<ul style="list-style-type: none"> • Carbon County • Community Leaders 	Moderate
4	Maintain clear zones for utility corridors and infrastructure.	<ul style="list-style-type: none"> • Carbon County • Utility Companies • Utility Operators 	High
5	Work with landowners to firesafe their propane tanks.	<ul style="list-style-type: none"> • Carbon County • Propane Provider 	High
Year 5-10	Management Action	Responsibility	*Priority:
1	Designate community shooting areas and create/enforce ordinances to prevent firearm ignitions.	<ul style="list-style-type: none"> • Carbon County • Community Leaders 	Moderate

*Priority was designated by assessing the estimated value of the resources being protected by the management action. The higher the value of the resource being protected, the higher the priority.

Goal B: Work with state and federal agencies to decrease fuels on adjacent public land to reduce wildfire intensity and impact

Year 0-2	Management Action	Responsibility	*Priority:
1	Work with agencies to evaluate priority areas for fuel reduction treatments.	<ul style="list-style-type: none"> • Carbon County • Community Leaders • BLM • USFS • FFSL • SITLA • UDWR • UDOT 	High
2	Assist agencies in identifying pinyon-juniper woodlands adjacent to WUI for treatment.	<ul style="list-style-type: none"> • Carbon County • Community Leaders • BLM • USFS • FFSL • SITLA • UDWR 	High
3	Prevent noxious/invasive weed proliferation through management, control, and reduction.	<ul style="list-style-type: none"> • Carbon County • BLM • USFS • SITLA • UDWR 	High
4	Manage mining and oil/gas operations to prevent wildfire ignitions and for the protection of their operations.	<ul style="list-style-type: none"> • Carbon County • USFS • BLM • UDOGM 	High
5	Assist UDOT and railroad company in identifying areas along major transportation corridors that need fuels maintenance.	<ul style="list-style-type: none"> • Carbon County • UDOT • Railway Owners 	Moderate
6	Coordinate with agencies to plan upcoming fuel reduction treatments and offer county support to implement the treatments.	<ul style="list-style-type: none"> • Carbon County • Community Leaders • BLM • USFS • FFSL • SITLA • UDWR 	Moderate

Year 2-5	Management Action	Responsibility	*Priority:
1	Conduct fuel reduction treatments on USFS-administered land in high-priority areas.	<ul style="list-style-type: none"> • Carbon County • USFS 	High
2	Conduct fuel reduction treatments on BLM-administered land in high-priority areas.	<ul style="list-style-type: none"> • Carbon County • BLM 	High
3	Conduct fuel reduction treatments on State-managed land in high-priority areas.	<ul style="list-style-type: none"> • Carbon County • FFSL • SITLA • UDWR 	High
4	Reduce undesirable fuels adjacent to riparian areas to reduce fire impacts and maintain channel stability.	<ul style="list-style-type: none"> • Carbon County • Land Owners • Appropriate agencies 	Low
5	Manage vegetation adjacent to roadways, trails, and railroad lines to prevent wildfire ignitions and to create green strips and fuel breaks.	<ul style="list-style-type: none"> • Carbon County • Land Owners • Appropriate agencies 	Moderate
6	Manage recreation (trails, campsites, etc.) to prevent wildfire ignitions and to reduce fuel loading.	<ul style="list-style-type: none"> • Carbon County • Land Owners • Appropriate agencies 	Moderate
7	Maintain clear zones for utility corridors and infrastructure.	<ul style="list-style-type: none"> • Carbon County • Utility Companies • Utility Operators 	High
8	Support wildlife habitat improvement projects that also reduce wildfire risk.	<ul style="list-style-type: none"> • Carbon County • Appropriate Agencies 	Moderate
9	Support agencies in post-fire rehabilitation/watershed restoration projects to reduce adverse impacts after fires.	<ul style="list-style-type: none"> • Carbon County • Appropriate Agencies 	High
Year 5-10	Management Action	Responsibility	*Priority:
1	Designate community shooting areas and create/enforce ordinances to prevent firearm ignitions.	<ul style="list-style-type: none"> • Carbon County • Appropriate Agencies 	Moderate

*Priority was designated by assessing the estimated value of the resources being protected by the management action. The higher the value of the resource being protected, the higher the priority.

Goal C: Evaluate, improve, and maintain community wildfire preparations and response facilities/equipment

Year 0-2	Management Action	Responsibility	*Priority:
1	Work with community leaders to evaluate community wildfire preparedness and identify deficiencies (e.g., manpower, equipment, infrastructure, etc.).	<ul style="list-style-type: none"> • Carbon County • Community Leaders/Fire Professionals 	High
2	Assist communities in correcting or mitigating community wildfire preparedness deficiencies as needed.	<ul style="list-style-type: none"> • Carbon County • Community Leaders 	High
3	Identify existing fuel breaks and propose other strategic fuel break locations.	<ul style="list-style-type: none"> • Carbon County • Community Leaders/Fire Professionals 	High
4	Construct fuel breaks in priority areas.	<ul style="list-style-type: none"> • Carbon County 	Moderate
5	Inspect and test all hydrants, hoses, and equipment to ensure/maintain proper function.	<ul style="list-style-type: none"> • Carbon County • Community Fire Professionals 	High
6	Identify GPS coordinates for available water sources for fire suppression.	<ul style="list-style-type: none"> • Carbon County • Community Leaders • Emergency Response Entities 	High
7	Identify suitable escape routes for residents and emergency response personnel.	<ul style="list-style-type: none"> • Carbon County • Community Leaders • Emergency Response Entities 	High
Year 2-5	Management Action	Responsibility	*Priority:
1	Review community signage to ensure escape routes and safe areas are clearly signed with fire resistant sign materials.	<ul style="list-style-type: none"> • Carbon County • Community Leaders • Emergency Response Entities 	Moderate

2	Evaluate bridges and culverts to ensure that the weight of emergency vehicles can be supported.	<ul style="list-style-type: none"> • Carbon County • Community Leaders • Emergency Response Entities 	Moderate
3	Work to anticipate future community growth and identify additional fire suppression resources that will be required in the future.	<ul style="list-style-type: none"> • Carbon County • Community Leaders • Emergency Response Entities 	Moderate
Year 5-10	Management Action	Responsibility	*Priority:
1	Acquire additional fire suppression resources as dictated by anticipated needs.	<ul style="list-style-type: none"> • Carbon County • Community Leaders • Emergency Response Entities 	Moderate

*Priority was designated by assessing the estimated value of the resources being protected by the management action. The higher the value of the resource being protected, the higher the priority.

<i>Goal D: Coordinate with communities to develop a comprehensive emergency response plan</i>			
Year 0-2	Management Action	Responsibility	*Priority:
1	Develop an evacuation plan with safe areas.	<ul style="list-style-type: none"> • Carbon County • Community Leaders • Emergency Response Entities 	High
2	Identify homebound residents or other persons needing additional assistance for emergency evacuation.	<ul style="list-style-type: none"> • Carbon County • Community Leaders • Emergency Response Entities 	High
Year 2-5	Management Action	Responsibility	*Priority:

1	Develop reverse 911 notification system or other similar community communication plan.	<ul style="list-style-type: none"> • Carbon County • Community Leaders • Emergency Response Entities 	Low
Year 5-10	Management Action	Responsibility	*Priority:
1	Maintain and revise evacuation plan as necessary	<ul style="list-style-type: none"> • Carbon County • Community Leaders • Emergency Response Entities 	High

*Priority was designated by assessing the estimated value of the resources being protected by the management action. The higher the value of the resource being protected, the higher the priority.

<i>Goal E: Train community leaders and educate community members to prepare for and respond to wildfire</i>			
Year 0-2	Management Action	Responsibility	*Priority:
1	Educate the public on the emergency response plan and make it available to the public.	<ul style="list-style-type: none"> • Carbon County • Community Leaders 	High
2	Fire awareness campaign including brochures, videos, school assemblies, radio advertisements, demonstration areas, and advertised public meetings.	<ul style="list-style-type: none"> • Carbon County • Community Leaders • Fire Professionals 	High
3	Schedule with residents and provide individual property assessments by a fire professional.	<ul style="list-style-type: none"> • Carbon County • Community Leaders • Fire Professionals 	Moderate
4	Hold annual community wildfire preparedness meetings just prior to annual county CWPP review meeting during late spring.	<ul style="list-style-type: none"> • Carbon County • Community Leaders • Fire Professionals 	High
5	Distribute annual flier with dates of trainings, areas	<ul style="list-style-type: none"> • Carbon County 	Moderate

	of special concern, anticipated fireworks restrictions, etc.	<ul style="list-style-type: none"> Community Leaders 	
Year 2-5	Management Action	Responsibility	*Priority:
1	Promote improved house address signage.	<ul style="list-style-type: none"> Carbon County Community Leaders 	Low
2	Develop and implement plan to educate new homeowners about emergency response plan.	<ul style="list-style-type: none"> Carbon County Community Leaders 	Low
3	Partner with agencies to provide basic and advanced trainings for community officials and fire professionals.	<ul style="list-style-type: none"> Carbon County Community Leaders Fire Professionals FFSL USFS BLM 	High
4	Hold annual community wildfire preparedness meetings just prior to annual county CWPP review meeting during late spring.	<ul style="list-style-type: none"> Carbon County Community Leaders Fire Professionals 	High
5	Distribute annual flier with dates of trainings, areas of special concern, anticipated fireworks restrictions, etc.	<ul style="list-style-type: none"> Carbon County Community Leaders 	Moderate
Year 5-10	Management Action	Responsibility	*Priority:
1	Hold annual community wildfire preparedness meetings just prior to annual county CWPP review meeting during late spring.	<ul style="list-style-type: none"> Carbon County Community Leaders Fire Professionals 	High
2	Distribute annual flier with dates of trainings, areas of special concern, anticipated fireworks restrictions, etc.	<ul style="list-style-type: none"> Carbon County Community Leaders 	Moderate

*Priority was designated by assessing the estimated value of the resources being protected by the management action. The higher the value of the resource being protected, the higher the priority.

Goal F: Actively address identified regulatory issues impacting community wildfire prevention and response needs

Year 0-2	Management Action	Responsibility	*Priority:
1	Review and revise or create county ordinances for weed management.	<ul style="list-style-type: none"> Carbon County Community Leaders 	Moderate
2	Work with community leaders to review current ordinances to determine fire protection needs.	<ul style="list-style-type: none"> Carbon County Community Leaders 	High
3	Promote ordinances that address fire protection needs.	<ul style="list-style-type: none"> Carbon County Community Leaders Fire Professionals 	High
Year 2-5	Management Action	Responsibility	*Priority:
1	Promote zoning guidelines that promote adequate space for fire equipment movement and access.	<ul style="list-style-type: none"> Carbon County Community Leaders Fire Professionals 	Low
2	Require fire protection measures in all new commercial and residential construction, including fuel breaks, fire-resistant building materials, etc.	<ul style="list-style-type: none"> Carbon County Community Leaders Fire Professionals 	High

*Priority was designated by assessing the estimated value of the resources being protected by the management action. The higher the value of the resource being protected, the higher the priority.

<i>Goal G: Maintain the commitment to regularly evaluate, update, and maintain planning commitments</i>			
Year 0-2	Management Action	Responsibility	*Priority:
1	Review goals and actions in CWPP annually (during late spring) and update as needed.	<ul style="list-style-type: none"> All Stakeholders 	High
2	Review vegetation maintenance schedule and alter as needed.	<ul style="list-style-type: none"> Carbon County Appropriate Agencies 	High
Year	Management Action	Responsibility	*Priority:

2-5			
1	Review goals and actions in CWPP annually (during late spring) and update as needed.	<ul style="list-style-type: none"> • All Stakeholders 	High
2	Review vegetation maintenance schedule and alter as needed.	<ul style="list-style-type: none"> • Carbon County • Appropriate Agencies 	High
Year 5-10	Management Action	Responsibility	*Priority:
1	Review goals and actions in CWPP annually (during late spring) and update as needed.	<ul style="list-style-type: none"> • All Stakeholders 	High
2	Review vegetation maintenance schedule and alter as needed.	<ul style="list-style-type: none"> • Carbon County • Appropriate Agencies 	High

*Priority was designated by assessing the estimated value of the resources being protected by the management action. The higher the value of the resource being protected, the higher the priority.

Priority Area 5: Book Cliffs / Tavaputs Plateau

Priority Area 5 is the largest priority area within the county and includes approximately 231,000 acres of land, which extends along the Book Cliffs and Roan Cliffs for their extents within the county (see Figures 1 and 6). Sunnyside is the only municipality within this priority area, and is accessible year-round. The unincorporated community of Tavaputs is comprised of several privately-owned ranches, and access becomes most difficult during the winter months. Sunnyside is small and somewhat ill-equipped with regards to fire suppression capabilities; Sunnyside can utilize fire suppression resources from East Carbon. Tavaputs has no fire suppression capabilities and must rely on other resources, including Sunnyside and East Carbon Fire Departments, two county-owned 4,000 gallon water tenders, county-owned bulldozers and graders, as well as state and federally-owned fire engines.

A small portion of the priority area is used by the extraction industry, while the majority of the area is used for recreation purposes and livestock grazing. Elevation ranges greatly from approximately 6,000 to 10,200 feet above sea level, and vegetation types also vary greatly with elevation; desert scrub/steppe occupies the lowest areas, pinyon-juniper woodlands and sagebrush steppe occupy the foothills at the intermediate elevations, and mountain brush and other forest types occupy the high elevation areas. Existing fire breaks include SR-191, Nine Mile Canyon Road, Dugout Canyon Road, B Canyon Road, Whitmore Canyon Road, SR-124, and several gravel forest roads; fire breaks may also include mosaics of vegetation consisting of low, sparse shrubs and grasses. Water sources for fire suppression activities could include Grassy Trail Reservoir, Sunnyside Power Plant Pond, Range Creek, Coal Creek, or Willow Creek.

According to the UWRAP data, this area has a relatively high wildfire risk and threat, likely due to roadways located adjacent to steep hillsides with dense vegetative fuels. Mining infrastructure and several well pads are located adjacent to vegetative fuels, and could pose a wildfire risk. Frequent truck traffic to and from the mines and well pads may also pose a wildfire risk. Recreation in this area may increase the probability of campfire-ignition wildfires. Further, according to the UWRAP data, the area has experienced several major wildfires within the last 20 years (South Ridge [2003] and Mathis [2007]); analysis of other sources may reveal a more-comprehensive fire history of the area. Two known BLM fuel reduction treatments have occurred within the project area, but the type of treatment is unknown. Due to the steep terrain, poor accessibility, the lack of fire suppression resources in this area, ground response to wildfires is expected to be slow.

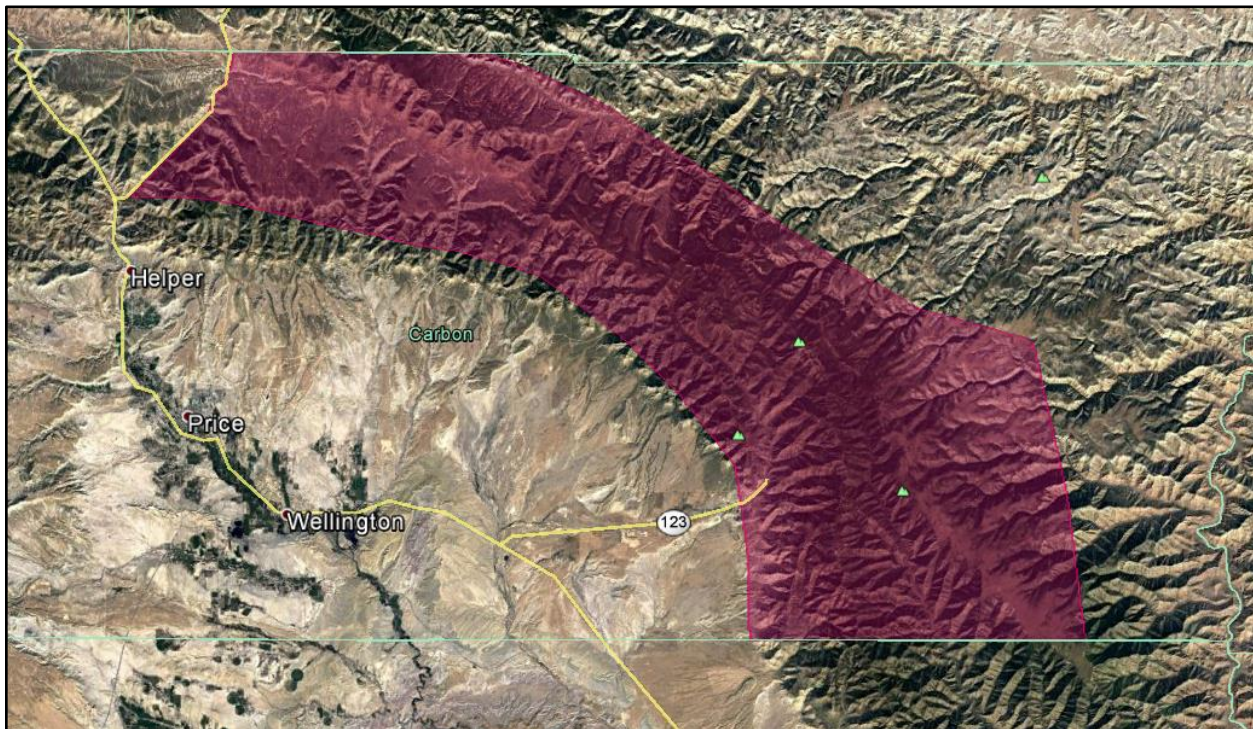


Figure 6: Book Cliffs / Tavaputs Plateau 2019 Existing Condition

Priority Area 5 (Book Cliffs / Tavaputs Plateau) Goals and Specific Actions

- A. Decrease fuels around key areas within and around communities to reduce wildfire intensity and impact
- B. Work with state and federal agencies to decrease fuels on adjacent public land to reduce wildfire intensity and impact
- C. Evaluate, improve, and maintain community wildfire preparations and response facilities/equipment
- D. Coordinate with communities to develop a comprehensive emergency response plan
- E. Train community leaders and educate community members to prepare for and respond to wildfire
- F. Actively address identified regulatory issues impacting community wildfire prevention and response needs
- H. Maintain the commitment to regularly evaluate, update, and maintain planning commitments

<i>Goal A: Decrease fuels around key areas within and around communities to reduce wildfire intensity and impact</i>			
Year 0-2	Management Action	Responsibility	*Priority:
1	Encourage individual lot cleanup and creation of defensible space. Provide guidance and inspection as needed, and involve service organizations.	<ul style="list-style-type: none"> • Carbon County • Land Owners • Service Organizations 	High
2	Work with landowners and service organizations to create defensible spaces around unoccupied or abandoned lots.	<ul style="list-style-type: none"> • Carbon County • Land Owners • Service Organizations 	High
3	Implement community roadside mowing/reseeding projects.	<ul style="list-style-type: none"> • Carbon County • Community Leaders • Land Owners 	High
4	Evaluate fuel loading around communities and identify priority areas for fuel reduction treatments.	<ul style="list-style-type: none"> • Carbon County • Community Leaders 	Moderate
5	Begin fuel reduction treatments in previously-identified priority areas.	<ul style="list-style-type: none"> • Carbon County • Community Leaders • Land Owners 	Moderate
6	Designate community burn/chipping days and assist residents in removal of fuels from their properties.	<ul style="list-style-type: none"> • Carbon County • Community Leaders 	Moderate
7	Develop a list of residential properties and businesses with gps coordinates to provide to emergency responders.	<ul style="list-style-type: none"> • Carbon County • Community Leaders • Emergency Response Entities 	High
Year	Management Action	Responsibility	*Priority:

2-5			
1	Reduce undesirable fuels adjacent to riparian areas to reduce fire impacts and maintain channel stability.	<ul style="list-style-type: none"> Carbon County 	Low
2	Control noxious weeds that contribute to fire hazard.	<ul style="list-style-type: none"> Carbon County County Weed Dept 	Moderate
3	Manage vegetation adjacent to roadways, trails, and railroad lines to prevent wildfire ignitions or to interrupt contiguous fuels.	<ul style="list-style-type: none"> Carbon County Community Leaders 	Moderate
4	Maintain clear zones for utility corridors and infrastructure.	<ul style="list-style-type: none"> Carbon County Utility Companies Utility Operators 	High
5	Work with landowners to firesafe their propane tanks.	<ul style="list-style-type: none"> Carbon County Propane Provider 	High
Year 5-10	Management Action	Responsibility	*Priority:
1	Reduce beetle-killed timber within and adjacent to the community	<ul style="list-style-type: none"> Carbon County Community Leaders Land Owners 	Moderate
2	Designate community shooting areas and create/enforce ordinances to prevent firearm ignitions.	<ul style="list-style-type: none"> Carbon County Community Leaders 	Moderate

*Priority was designated by assessing the estimated value of the resources being protected by the management action. The higher the value of the resource being protected, the higher the priority.

<i>Goal B: Work with state and federal agencies to decrease fuels on adjacent public land to reduce wildfire intensity and impact</i>			
Year 0-2	Management Action	Responsibility	*Priority:
1	Work with agencies to evaluate priority areas for fuel reduction treatments.	<ul style="list-style-type: none"> Carbon County Community Leaders BLM USFS FFSL SITLA UDWR UDOT 	High
2	Assist agencies in identifying pinyon-juniper	<ul style="list-style-type: none"> Carbon County 	High

	woodlands adjacent to WUI for treatment.	<ul style="list-style-type: none"> • Community Leaders • BLM • USFS • FFSL • SITLA • UDWR 	
3	Prevent noxious/invasive weed proliferation through management, control, and reduction.	<ul style="list-style-type: none"> • Carbon County • BLM • USFS • SITLA • UDWR 	High
4	Manage mining and oil/gas operations to prevent wildfire ignitions and for the protection of their operations.	<ul style="list-style-type: none"> • Carbon County • USFS • BLM • UDOGM 	High
5	Assist UDOT and railroad company in identifying areas along major transportation corridors that need fuels maintenance.	<ul style="list-style-type: none"> • Carbon County • UDOT • Railway Owners 	Moderate
6	Coordinate with agencies to plan upcoming fuel reduction treatments and offer county support to implement the treatments.	<ul style="list-style-type: none"> • Carbon County • Community Leaders • BLM • USFS • FFSL • SITLA • UDWR 	Moderate
Year 2-5	Management Action	Responsibility	*Priority:
1	Conduct fuel reduction treatments on USFS-administered land in high-priority areas.	<ul style="list-style-type: none"> • Carbon County • USFS 	High
2	Conduct fuel reduction treatments on BLM-administered land in high-priority areas.	<ul style="list-style-type: none"> • Carbon County • BLM 	High
3	Conduct fuel reduction treatments on State-managed land in high-priority areas.	<ul style="list-style-type: none"> • Carbon County • FFSL • SITLA • UDWR 	High
4	Reduce undesirable fuels adjacent to riparian areas to reduce fire impacts and maintain channel stability.	<ul style="list-style-type: none"> • Carbon County • Land Owners • Appropriate agencies 	Low
5	Manage vegetation adjacent to roadways, trails, and railroad lines to prevent wildfire ignitions and to	<ul style="list-style-type: none"> • Carbon County • Land Owners 	Moderate

	create green strips and fuel breaks.	<ul style="list-style-type: none"> • Appropriate agencies 	
6	Manage recreation (trails, campsites, etc.) to prevent wildfire ignitions and to reduce fuel loading.	<ul style="list-style-type: none"> • Carbon County • Land Owners • Appropriate agencies 	Moderate
7	Maintain clear zones for utility corridors and infrastructure.	<ul style="list-style-type: none"> • Carbon County • Utility Companies • Utility Operators 	High
8	Support wildlife habitat improvement projects that also reduce wildfire risk.	<ul style="list-style-type: none"> • Carbon County • Appropriate Agencies 	Moderate
9	Support agencies in post-fire rehabilitation/watershed restoration projects to reduce adverse impacts after fires.	<ul style="list-style-type: none"> • Carbon County • Appropriate Agencies 	High
Year 5-10	Management Action	Responsibility	*Priority:
1	Reduce beetle-killed timber within and adjacent to the community	<ul style="list-style-type: none"> • Carbon County • Appropriate Agencies 	Moderate
2	Designate community shooting areas and create/enforce ordinances to prevent firearm ignitions.	<ul style="list-style-type: none"> • Carbon County • Appropriate Agencies 	Moderate

*Priority was designated by assessing the estimated value of the resources being protected by the management action. The higher the value of the resource being protected, the higher the priority.

<i>Goal C: Evaluate, improve, and maintain community wildfire preparations and response facilities/equipment</i>			
Year 0-2	Management Action	Responsibility	*Priority:
1	Work with community leaders to evaluate community wildfire preparedness and identify deficiencies (e.g., manpower, equipment, infrastructure, etc.).	<ul style="list-style-type: none"> • Carbon County • Community Leaders/Fire Professionals 	High
2	Assist communities in correcting or mitigating community wildfire preparedness deficiencies as needed.	<ul style="list-style-type: none"> • Carbon County • Community Leaders 	High

3	Identify existing fuel breaks and propose other strategic fuel break locations.	<ul style="list-style-type: none"> Carbon County Community Leaders/Fire Professionals 	High
4	Construct fuel breaks in priority areas.	<ul style="list-style-type: none"> Carbon County 	Moderate
5	Inspect and test all hydrants, hoses, and equipment to ensure/maintain proper function.	<ul style="list-style-type: none"> Carbon County Community Fire Professionals 	High
6	Identify GPS coordinates for available water sources for fire suppression.	<ul style="list-style-type: none"> Carbon County Community Leaders Emergency Response Entities 	High
7	Identify suitable escape routes for residents and emergency response personnel.	<ul style="list-style-type: none"> Carbon County Community Leaders Emergency Response Entities 	High
Year 2-5	Management Action	Responsibility	*Priority:
1	Review community signage to ensure escape routes and safe areas are clearly signed with fire resistant sign materials.	<ul style="list-style-type: none"> Carbon County Community Leaders Emergency Response Entities 	Moderate
2	Evaluate bridges and culverts to ensure that the weight of emergency vehicles can be supported.	<ul style="list-style-type: none"> Carbon County Community Leaders Emergency Response Entities 	Moderate
3	Work to anticipate future community growth and identify additional fire suppression resources that will be required in the future.	<ul style="list-style-type: none"> Carbon County Community Leaders Emergency Response Entities 	Moderate
Year 5-10	Management Action	Responsibility	*Priority:
1	Acquire additional fire suppression resources as	<ul style="list-style-type: none"> Carbon County 	Moderate

	dictated by anticipated needs.	<ul style="list-style-type: none"> • Community Leaders • Emergency Response Entities 	
--	--------------------------------	--	--

*Priority was designated by assessing the estimated value of the resources being protected by the management action. The higher the value of the resource being protected, the higher the priority.

<i>Goal D: Coordinate with communities to develop a comprehensive emergency response plan</i>			
Year 0-2	Management Action	Responsibility	*Priority:
1	Develop an evacuation plan with safe areas.	<ul style="list-style-type: none"> • Carbon County • Community Leaders • Emergency Response Entities 	High
2	Identify homebound residents or other persons needing additional assistance for emergency evacuation.	<ul style="list-style-type: none"> • Carbon County • Community Leaders • Emergency Response Entities 	High
Year 2-5	Management Action	Responsibility	*Priority:
1	Develop reverse 911 notification system or other similar community communication plan.	<ul style="list-style-type: none"> • Carbon County • Community Leaders • Emergency Response Entities 	Low
Year 5-10	Management Action	Responsibility	*Priority:
1	Maintain and revise evacuation plan as necessary	<ul style="list-style-type: none"> • Carbon County • Community Leaders • Emergency Response Entities 	High

*Priority was designated by assessing the estimated value of the resources being protected by the management action. The higher the value of the resource being protected, the higher the priority.

<i>Goal E: Train community leaders and educate community members to prepare for and respond to wildfire</i>			
Year 0-2	Management Action	Responsibility	*Priority:
1	Educate the public on the emergency response plan and make it available to the public.	<ul style="list-style-type: none"> Carbon County Community Leaders 	High
2	Fire awareness campaign including brochures, videos, school assemblies, radio advertisements, demonstration areas, and advertised public meetings.	<ul style="list-style-type: none"> Carbon County Community Leaders Fire Professionals 	High
3	Schedule with residents and provide individual property assessments by a fire professional.	<ul style="list-style-type: none"> Carbon County Community Leaders Fire Professionals 	Moderate
4	Hold annual community wildfire preparedness meetings just prior to annual county CWPP review meeting during late spring.	<ul style="list-style-type: none"> Carbon County Community Leaders Fire Professionals 	High
5	Distribute annual flier with dates of trainings, areas of special concern, anticipated fireworks restrictions, etc.	<ul style="list-style-type: none"> Carbon County Community Leaders 	Moderate
Year 2-5	Management Action	Responsibility	*Priority:
1	Promote improved house address signage.	<ul style="list-style-type: none"> Carbon County Community Leaders 	Low
2	Develop and implement plan to educate new homeowners about emergency response plan.	<ul style="list-style-type: none"> Carbon County Community Leaders 	Low
3	Partner with agencies to provide basic and advanced trainings for community officials and fire professionals.	<ul style="list-style-type: none"> Carbon County Community Leaders 	High

		<ul style="list-style-type: none"> • Fire Professionals • FFSL • USFS • BLM 	
4	Hold annual community wildfire preparedness meetings just prior to annual county CWPP review meeting during late spring.	<ul style="list-style-type: none"> • Carbon County • Community Leaders • Fire Professionals 	High
5	Distribute annual flier with dates of trainings, areas of special concern, anticipated fireworks restrictions, etc.	<ul style="list-style-type: none"> • Carbon County • Community Leaders 	Moderate
Year 5-10	Management Action	Responsibility	*Priority:
1	Hold annual community wildfire preparedness meetings just prior to annual county CWPP review meeting during late spring.	<ul style="list-style-type: none"> • Carbon County • Community Leaders • Fire Professionals 	High
2	Distribute annual flier with dates of trainings, areas of special concern, anticipated fireworks restrictions, etc.	<ul style="list-style-type: none"> • Carbon County • Community Leaders 	Moderate

*Priority was designated by assessing the estimated value of the resources being protected by the management action. The higher the value of the resource being protected, the higher the priority.

<i>Goal F: Actively address identified regulatory issues impacting community wildfire prevention and response needs</i>			
Year 0-2	Management Action	Responsibility	*Priority:
1	Review and revise or create county ordinances for weed management.	<ul style="list-style-type: none"> • Carbon County • Community Leaders 	Moderate
2	Work with community leaders to review current ordinances to determine fire protection needs.	<ul style="list-style-type: none"> • Carbon County • Community Leaders 	High
3	Promote ordinances that address fire protection needs.	<ul style="list-style-type: none"> • Carbon County • Community Leaders • Fire Professionals 	High

Year 2-5	Management Action	Responsibility	*Priority:
1	Promote zoning guidelines that promote adequate space for fire equipment movement and access.	<ul style="list-style-type: none"> • Carbon County • Community Leaders • Fire Professionals 	Low
2	Require fire protection measures in all new commercial and residential construction, including fuel breaks, fire-resistant building materials, etc.	<ul style="list-style-type: none"> • Carbon County • Community Leaders • Fire Professionals 	High

*Priority was designated by assessing the estimated value of the resources being protected by the management action. The higher the value of the resource being protected, the higher the priority.

<i>Goal G: Maintain the commitment to regularly evaluate, update, and maintain planning commitments</i>			
Year 0-2	Management Action	Responsibility	*Priority:
1	Review goals and actions in CWPP annually (during late spring) and update as needed.	<ul style="list-style-type: none"> • All Stakeholders 	High
2	Review vegetation maintenance schedule and alter as needed.	<ul style="list-style-type: none"> • Carbon County • Appropriate Agencies 	High
Year 2-5	Management Action	Responsibility	*Priority:
1	Review goals and actions in CWPP annually (during late spring) and update as needed.	<ul style="list-style-type: none"> • All Stakeholders 	High
2	Review vegetation maintenance schedule and alter as needed.	<ul style="list-style-type: none"> • Carbon County • Appropriate Agencies 	High
Year 5-10	Management Action	Responsibility	*Priority:
1	Review goals and actions in CWPP annually (during late spring) and update as needed.	<ul style="list-style-type: none"> • All Stakeholders 	High
2	Review vegetation maintenance schedule and alter as needed.	<ul style="list-style-type: none"> • Carbon County • Appropriate 	High

		Agencies	
--	--	----------	--

*Priority was designated by assessing the estimated value of the resources being protected by the management action. The higher the value of the resource being protected, the higher the priority.

Priority Area 6: Nine Mile Canyon

Priority Area 6 includes approximately 6,000 acres of land, which encompasses an approximately 3,000 foot wide corridor of Nine Mile Canyon within Carbon County (see Figures 1 and 7). Small unincorporated agricultural communities exist within the canyon; these communities are accessible year-round. There are currently no existing fire suppression capabilities within this priority area; however, other resources may be utilized for fire suppression, including two county-owned 4,000 gallon water tenders, county-owned bulldozers and graders, as well as state and federally-owned fire engines.

Currently, much of the area is used for transportation, agriculture, and tourism. Elevation ranges from approximately 5,100 to 7,700 feet above sea level. Vegetation in the area is primarily composed of agricultural vegetation, riparian vegetation, and sagebrush steppe within the canyon, while pinyon-juniper woodlands occupy the sides of the canyon. Existing fire breaks include agricultural land, moist riparian vegetation, and mosaics of vegetation consisting of low, sparse shrubs and grasses. Nine Mile Canyon Road is the only well-established road in this priority area, and it would likely function adequately as a fuel break. Water sources for fire suppression activities could include Nine Mile Creek, Minnie Maud Creek, Argyle Creek, or Dry Creek.

According to the UWRAP data, this area has a relatively high wildfire risk and threat, likely due to the roadway located adjacent to steep slopes with dense vegetative fuels. Recreation in this area may increase the probability of campfire-ignition wildfires. New or existing developments constructed adjacent to vegetative fuels may also increase the probability of wildfire. According to the UWRAP data, there have not been any recorded major wildfires within this priority area during the past 20 years, but analysis of other sources may reveal a more-comprehensive fire history of the area. Due to the steep terrain, the limited accessible roadways, and the lack of fire suppression resources in this area, ground response to wildfires is expected to be slow and limited to accessible areas.



Figure 7: Nine Mile Canyon 2019 Existing Condition

Priority Area 6 (Nine Mile Canyon) Goals and Specific Actions

- A. Decrease fuels around key areas within and around communities to reduce wildfire intensity and impact
- B. Work with state and federal agencies to decrease fuels on adjacent public land to reduce wildfire intensity and impact
- C. Evaluate, improve, and maintain community wildfire preparations and response facilities/equipment
- D. Coordinate with communities to develop a comprehensive emergency response plan
- E. Train community leaders and educate community members to prepare for and respond to wildfire
- F. Actively address identified regulatory issues impacting community wildfire prevention and response needs
- G. Maintain the commitment to regularly evaluate, update, and maintain planning commitments

<i>Goal A: Decrease fuels around key areas within and around communities to reduce wildfire intensity and impact</i>			
Year 0-2	Management Action	Responsibility	*Priority:
1	Encourage individual lot cleanup and creation of defensible space. Provide guidance and inspection as needed, and involve service organizations.	<ul style="list-style-type: none"> Carbon County Land Owners Service Organizations 	High
2	Work with landowners and service organizations to create defensible spaces around unoccupied or abandoned lots.	<ul style="list-style-type: none"> Carbon County Land Owners Service Organizations 	High
3	Implement community roadside mowing/reseeding projects.	<ul style="list-style-type: none"> Carbon County Community Leaders Land Owners 	High
4	Evaluate fuel loading around communities and identify priority areas for fuel reduction treatments.	<ul style="list-style-type: none"> Carbon County Community Leaders 	Moderate
5	Begin fuel reduction treatments in previously-identified priority areas.	<ul style="list-style-type: none"> Carbon County Community Leaders Land Owners 	Moderate
6	Designate community burn/chipping days and assist residents in removal of fuels from their properties.	<ul style="list-style-type: none"> Carbon County Community Leaders 	Moderate
7	Develop a list of residential properties and businesses with gps coordinates to provide to emergency responders.	<ul style="list-style-type: none"> Carbon County Community Leaders Emergency Response Entities 	High
Year 2-5	Management Action	Responsibility	*Priority:
1	Reduce undesirable fuels adjacent to riparian areas	<ul style="list-style-type: none"> Carbon County 	Low

	to reduce fire impacts and maintain channel stability.		
2	Control noxious weeds that contribute to fire hazard.	<ul style="list-style-type: none"> Carbon County County Weed Dept 	Moderate
3	Manage vegetation adjacent to roadways, trails, and railroad lines to prevent wildfire ignitions or to interrupt contiguous fuels.	<ul style="list-style-type: none"> Carbon County Community Leaders 	Moderate
4	Maintain clear zones for utility corridors and infrastructure.	<ul style="list-style-type: none"> Carbon County Utility Companies Utility Operators 	High
5	Work with landowners to firesafe their propane tanks.	<ul style="list-style-type: none"> Carbon County Propane Provider 	High
Year 5-10	Management Action	Responsibility	*Priority:
1	Designate community shooting areas and create/enforce ordinances to prevent firearm ignitions.	<ul style="list-style-type: none"> Carbon County Community Leaders 	Moderate

*Priority was designated by assessing the estimated value of the resources being protected by the management action. The higher the value of the resource being protected, the higher the priority.

<i>Goal B: Work with state and federal agencies to decrease fuels on adjacent public land to reduce wildfire intensity and impact</i>			
Year 0-2	Management Action	Responsibility	*Priority:
1	Work with agencies to evaluate priority areas for fuel reduction treatments.	<ul style="list-style-type: none"> Carbon County Community Leaders BLM USFS FFSL SITLA UDWR UDOT 	High
2	Assist agencies in identifying pinyon-juniper woodlands adjacent to WUI for treatment.	<ul style="list-style-type: none"> Carbon County Community Leaders BLM USFS FFSL SITLA UDWR 	High

3	Prevent noxious/invasive weed proliferation through management, control, and reduction.	<ul style="list-style-type: none"> • Carbon County • BLM • USFS • SITLA • UDWR 	High
4	Manage mining and oil/gas operations to prevent wildfire ignitions and for the protection of their operations.	<ul style="list-style-type: none"> • Carbon County • USFS • BLM • UDOGM 	High
5	Assist UDOT and railroad company in identifying areas along major transportation corridors that need fuels maintenance.	<ul style="list-style-type: none"> • Carbon County • UDOT • Railway Owners 	Moderate
6	Coordinate with agencies to plan upcoming fuel reduction treatments and offer county support to implement the treatments.	<ul style="list-style-type: none"> • Carbon County • Community Leaders • BLM • USFS • FFSL • SITLA • UDWR 	Moderate
Year 2-5	Management Action	Responsibility	*Priority:
1	Conduct fuel reduction treatments on USFS-administered land in high-priority areas.	<ul style="list-style-type: none"> • Carbon County • USFS 	High
2	Conduct fuel reduction treatments on BLM-administered land in high-priority areas.	<ul style="list-style-type: none"> • Carbon County • BLM 	High
3	Conduct fuel reduction treatments on State-managed land in high-priority areas.	<ul style="list-style-type: none"> • Carbon County • FFSL • SITLA • UDWR 	High
4	Reduce undesirable fuels adjacent to riparian areas to reduce fire impacts and maintain channel stability.	<ul style="list-style-type: none"> • Carbon County • Land Owners • Appropriate agencies 	Low
5	Manage vegetation adjacent to roadways, trails, and railroad lines to prevent wildfire ignitions and to create green strips and fuel breaks.	<ul style="list-style-type: none"> • Carbon County • Land Owners • Appropriate agencies 	Moderate
6	Manage recreation (trails, campsites, etc.) to prevent wildfire ignitions and to reduce fuel loading.	<ul style="list-style-type: none"> • Carbon County • Land Owners • Appropriate agencies 	Moderate

7	Maintain clear zones for utility corridors and infrastructure.	<ul style="list-style-type: none"> Carbon County Utility Companies Utility Operators 	High
8	Support wildlife habitat improvement projects that also reduce wildfire risk.	<ul style="list-style-type: none"> Carbon County Appropriate Agencies 	Moderate
9	Support agencies in post-fire rehabilitation/watershed restoration projects to reduce adverse impacts after fires.	<ul style="list-style-type: none"> Carbon County Appropriate Agencies 	High
Year 5-10	Management Action	Responsibility	*Priority:
1	Designate community shooting areas and create/enforce ordinances to prevent firearm ignitions.	<ul style="list-style-type: none"> Carbon County Appropriate Agencies 	Moderate

*Priority was designated by assessing the estimated value of the resources being protected by the management action. The higher the value of the resource being protected, the higher the priority.

<i>Goal C: Evaluate, improve, and maintain community wildfire preparations and response facilities/equipment</i>			
Year 0-2	Management Action	Responsibility	*Priority:
1	Work with community leaders to evaluate community wildfire preparedness and identify deficiencies (e.g., manpower, equipment, infrastructure, etc.).	<ul style="list-style-type: none"> Carbon County Community Leaders/Fire Professionals 	High
2	Assist communities in correcting or mitigating community wildfire preparedness deficiencies as needed.	<ul style="list-style-type: none"> Carbon County Community Leaders 	High
3	Identify existing fuel breaks and propose other strategic fuel break locations.	<ul style="list-style-type: none"> Carbon County Community Leaders/Fire Professionals 	High
4	Construct fuel breaks in priority areas.	<ul style="list-style-type: none"> Carbon County 	Moderate
5	Inspect and test all hydrants, hoses, and equipment to ensure/maintain proper function.	<ul style="list-style-type: none"> Carbon County Community Fire Professionals 	High

6	Identify GPS coordinates for available water sources for fire suppression.	<ul style="list-style-type: none"> • Carbon County • Community Leaders • Emergency Response Entities 	High
7	Identify suitable escape routes for residents and emergency response personnel.	<ul style="list-style-type: none"> • Carbon County • Community Leaders • Emergency Response Entities 	High
Year 2-5	Management Action	Responsibility	*Priority:
1	Review community signage to ensure escape routes and safe areas are clearly signed with fire resistant sign materials.	<ul style="list-style-type: none"> • Carbon County • Community Leaders • Emergency Response Entities 	Moderate
2	Evaluate bridges and culverts to ensure that the weight of emergency vehicles can be supported.	<ul style="list-style-type: none"> • Carbon County • Community Leaders • Emergency Response Entities 	Moderate
3	Work to anticipate future community growth and identify additional fire suppression resources that will be required in the future.	<ul style="list-style-type: none"> • Carbon County • Community Leaders • Emergency Response Entities 	Moderate
Year 5-10	Management Action	Responsibility	*Priority:
1	Acquire additional fire suppression resources as dictated by anticipated needs.	<ul style="list-style-type: none"> • Carbon County • Community Leaders • Emergency Response Entities 	Moderate

*Priority was designated by assessing the estimated value of the resources being protected by the management action. The higher the value of the resource being protected, the higher the priority.

Goal D: Coordinate with communities to develop a comprehensive emergency response plan

Year 0-2	Management Action	Responsibility	*Priority:
1	Develop an evacuation plan with safe areas.	<ul style="list-style-type: none"> • Carbon County • Community Leaders • Emergency Response Entities 	High
2	Identify homebound residents or other persons needing additional assistance for emergency evacuation.	<ul style="list-style-type: none"> • Carbon County • Community Leaders • Emergency Response Entities 	High
Year 2-5	Management Action	Responsibility	*Priority:
1	Develop reverse 911 notification system or other similar community communication plan.	<ul style="list-style-type: none"> • Carbon County • Community Leaders • Emergency Response Entities 	Low
Year 5-10	Management Action	Responsibility	*Priority:
1	Maintain and revise evacuation plan as necessary	<ul style="list-style-type: none"> • Carbon County • Community Leaders • Emergency Response Entities 	High

*Priority was designated by assessing the estimated value of the resources being protected by the management action. The higher the value of the resource being protected, the higher the priority.

Goal E: Train community leaders and educate community members to prepare for and respond to wildfire

Year 0-2	Management Action	Responsibility	*Priority:
---------------------	--------------------------	-----------------------	-------------------

1	Educate the public on the emergency response plan and make it available to the public.	<ul style="list-style-type: none"> Carbon County Community Leaders 	High
2	Fire awareness campaign including brochures, videos, school assemblies, radio advertisements, demonstration areas, and advertised public meetings.	<ul style="list-style-type: none"> Carbon County Community Leaders Fire Professionals 	High
3	Schedule with residents and provide individual property assessments by a fire professional.	<ul style="list-style-type: none"> Carbon County Community Leaders Fire Professionals 	Moderate
4	Hold annual community wildfire preparedness meetings just prior to annual county CWPP review meeting during late spring.	<ul style="list-style-type: none"> Carbon County Community Leaders Fire Professionals 	High
5	Distribute annual flier with dates of trainings, areas of special concern, anticipated fireworks restrictions, etc.	<ul style="list-style-type: none"> Carbon County Community Leaders 	Moderate
Year 2-5	Management Action	Responsibility	*Priority:
1	Promote improved house address signage.	<ul style="list-style-type: none"> Carbon County Community Leaders 	Low
2	Develop and implement plan to educate new homeowners about emergency response plan.	<ul style="list-style-type: none"> Carbon County Community Leaders 	Low
3	Partner with agencies to provide basic and advanced trainings for community officials and fire professionals.	<ul style="list-style-type: none"> Carbon County Community Leaders Fire Professionals FFSL USFS BLM 	High
4	Hold annual community wildfire preparedness meetings just prior to annual county CWPP review meeting during late spring.	<ul style="list-style-type: none"> Carbon County Community Leaders Fire Professionals 	High
5	Distribute annual flier with dates of trainings, areas	<ul style="list-style-type: none"> Carbon County 	Moderate

	of special concern, anticipated fireworks restrictions, etc.	<ul style="list-style-type: none"> Community Leaders 	
Year 5-10	Management Action	Responsibility	*Priority:
1	Hold annual community wildfire preparedness meetings just prior to annual county CWPP review meeting during late spring.	<ul style="list-style-type: none"> Carbon County Community Leaders Fire Professionals 	High
2	Distribute annual flier with dates of trainings, areas of special concern, anticipated fireworks restrictions, etc.	<ul style="list-style-type: none"> Carbon County Community Leaders 	Moderate

*Priority was designated by assessing the estimated value of the resources being protected by the management action. The higher the value of the resource being protected, the higher the priority.

<i>Goal F: Actively address identified regulatory issues impacting community wildfire prevention and response needs</i>			
Year 0-2	Management Action	Responsibility	*Priority:
1	Review and revise or create county ordinances for weed management.	<ul style="list-style-type: none"> Carbon County Community Leaders 	Moderate
2	Work with community leaders to review current ordinances to determine fire protection needs.	<ul style="list-style-type: none"> Carbon County Community Leaders 	High
3	Promote ordinances that address fire protection needs.	<ul style="list-style-type: none"> Carbon County Community Leaders Fire Professionals 	High
Year 2-5	Management Action	Responsibility	*Priority:
1	Promote zoning guidelines that promote adequate space for fire equipment movement and access.	<ul style="list-style-type: none"> Carbon County Community Leaders Fire Professionals 	Low
2	Require fire protection measures in all new commercial and residential construction, including fuel breaks, fire-resistant building materials, etc.	<ul style="list-style-type: none"> Carbon County Community Leaders 	High

		<ul style="list-style-type: none"> Fire Professionals 	
--	--	--	--

*Priority was designated by assessing the estimated value of the resources being protected by the management action. The higher the value of the resource being protected, the higher the priority.

<i>Goal G: Maintain the commitment to regularly evaluate, update, and maintain planning commitments</i>			
Year 0-2	Management Action	Responsibility	*Priority:
1	Review goals and actions in CWPP annually (during late spring) and update as needed.	<ul style="list-style-type: none"> All Stakeholders 	High
2	Review vegetation maintenance schedule and alter as needed.	<ul style="list-style-type: none"> Carbon County Appropriate Agencies 	High
Year 2-5	Management Action	Responsibility	*Priority:
1	Review goals and actions in CWPP annually (during late spring) and update as needed.	<ul style="list-style-type: none"> All Stakeholders 	High
2	Review vegetation maintenance schedule and alter as needed.	<ul style="list-style-type: none"> Carbon County Appropriate Agencies 	High
Year 5-10	Management Action	Responsibility	*Priority:
1	Review goals and actions in CWPP annually (during late spring) and update as needed.	<ul style="list-style-type: none"> All Stakeholders 	High
2	Review vegetation maintenance schedule and alter as needed.	<ul style="list-style-type: none"> Carbon County Appropriate Agencies 	High

*Priority was designated by assessing the estimated value of the resources being protected by the management action. The higher the value of the resource being protected, the higher the priority.

Priority Area 7: Emma Park

Priority Area 7 includes approximately 20,000 acres of land, which encompasses the area between US-6, US-191, and the northern county boundary (see Figures 1 and 8). There are currently no residents within this priority area, but there is potential for future development. There are no existing fire suppression capabilities within this priority area; however, other resources may be utilized for fire suppression, including two county-owned 4,000 gallon water tenders, county-owned bulldozers and graders, as well as state and federally-owned fire engines.

Currently, much of the area is used by the extraction industry, as well as for transportation and recreation. Elevation ranges from approximately 6,100 to 8,400 feet above sea level. Vegetation in the area is primarily composed of pinyon-juniper woodlands in the lower canyon areas, and transitions to sagebrush steppe in the upper flats. Existing fire breaks include US-6, US-191, Emma Park Road, various other established roadways within the priority area, and mosaics of vegetation consisting of low, sparse shrubs and grasses. Water sources for fire suppression activities could include the Price River and Willow Creek.

According to the UWRAP data, the lower canyon portion of this priority area has a relatively high wildfire risk and threat. Increased risk and threat seem to be correlated with the proximity of the railway, US-6, and US-191 to the pinyon-juniper vegetation type and the steep canyon terrain. The sagebrush steppe areas have a significantly reduced wildfire risk and threat due to small and sparse roadways, gentle terrain, and the somewhat low and sparse vegetation type. Recreation in this priority area may increase the probability of campfire-ignition wildfires. New developments constructed adjacent to vegetative fuels may also increase the probability of wildfire.

According to the UWRAP data, the area has experienced at least one major wildfire within the last 20 years (Price Canyon [2002]), which was ignited by a passing train (U.S. Forest Service and BLM 2002); however, analysis of other sources may reveal a more-comprehensive fire history of the area. The year 2002 was one of the severest droughts since 1895; the Price Canyon Fire spread very quickly, especially on the steep canyon slopes, and threatened the lives of firefighters deployed to the fire. The dry fuel in the steep canyons was consumed quickly, and the fire slowed and eventually stopped spreading when it intersected the sagebrush steppe vegetation in the upper flats (U.S. Forest Service and BLM 2002)). The Price Canyon Fire demonstrates the importance of evaluating fuel conditions along major transportation corridors, and implementing appropriate fuel reduction treatments such as green stripping, fuel breaks, and thinning.

Much of a previously burned area is now dominated by weedy vegetation; weed infestations often proliferate with catastrophic fires, especially with a nearby weed seed source. Fuel reduction treatments could prevent future catastrophic fires and subsequent weed infestations within the rest of the priority area.

Due to the steep terrain, the limited accessible roadways, and the lack of fire suppression resources in this area, ground response to wildfires is expected to be slow and limited to accessible areas.

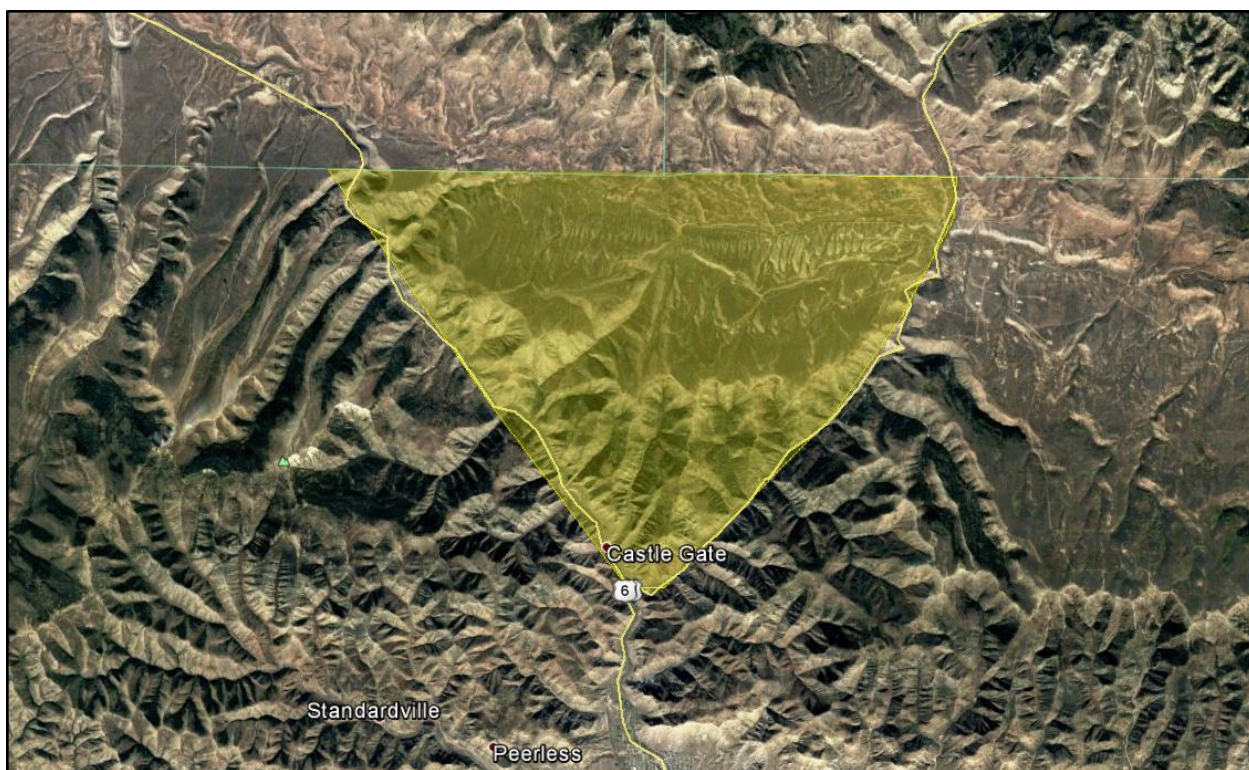


Figure 8: Emma Park 2019 Existing Condition

Priority Area 7 (Emma Park) Goals and Specific Actions

- A. Decrease fuels around key areas within and around communities to reduce wildfire intensity and impact
- B. Work with state and federal agencies to decrease fuels on adjacent public land to reduce wildfire intensity and impact
- C. Evaluate, improve, and maintain community wildfire preparations and response facilities/equipment
- D. Coordinate with communities to develop a comprehensive emergency response plan
- E. Train community leaders and educate community members to prepare for and respond to wildfire
- F. Actively address identified regulatory issues impacting community wildfire prevention and response needs
- G. Maintain the commitment to regularly evaluate, update, and maintain planning commitments

Goal A: Decrease fuels around key areas within and around communities to reduce wildfire intensity and impact

Year 0-2	Management Action	Responsibility	*Priority:
1	Encourage individual lot cleanup and creation of defensible space. Provide guidance and inspection as needed, and involve service organizations.	<ul style="list-style-type: none"> • Carbon County • Land Owners • Service Organizations 	High
2	Work with landowners and service organizations to create defensible spaces around unoccupied or	<ul style="list-style-type: none"> • Carbon County • Land Owners 	High

	abandoned lots.	<ul style="list-style-type: none"> • Service Organizations 	
3	Implement community roadside mowing/reseeding projects.	<ul style="list-style-type: none"> • Carbon County • Community Leaders • Land Owners 	High
4	Evaluate fuel loading around communities and identify priority areas for fuel reduction treatments.	<ul style="list-style-type: none"> • Carbon County • Community Leaders 	Moderate
5	Begin fuel reduction treatments in previously-identified priority areas.	<ul style="list-style-type: none"> • Carbon County • Community Leaders • Land Owners 	Moderate
6	Designate community burn/chipping days and assist residents in removal of fuels from their properties.	<ul style="list-style-type: none"> • Carbon County • Community Leaders 	Moderate
7	Develop a list of residential properties and businesses with gps coordinates to provide to emergency responders.	<ul style="list-style-type: none"> • Carbon County • Community Leaders • Emergency Response Entities 	High
Year 2-5	Management Action	Responsibility	*Priority:
1	Reduce undesirable fuels adjacent to riparian areas to reduce fire impacts and maintain channel stability.	<ul style="list-style-type: none"> • Carbon County 	Low
2	Control noxious weeds that contribute to fire hazard.	<ul style="list-style-type: none"> • Carbon County • County Weed Dept 	Moderate
3	Manage vegetation adjacent to roadways, trails, and railroad lines to prevent wildfire ignitions or to interrupt contiguous fuels.	<ul style="list-style-type: none"> • Carbon County • Community Leaders 	Moderate
4	Maintain clear zones for utility corridors and infrastructure.	<ul style="list-style-type: none"> • Carbon County • Utility Companies • Utility Operators 	High
5	Work with landowners to firesafe their propane tanks.	<ul style="list-style-type: none"> • Carbon County • Propane Provider 	High
Year 5-10	Management Action	Responsibility	*Priority:
1	Reduce beetle-killed timber within and adjacent to the community	<ul style="list-style-type: none"> • Carbon County • Community Leaders • Land Owners 	Moderate
2	Designate community shooting areas and create/enforce ordinances to prevent firearm	<ul style="list-style-type: none"> • Carbon County • Community Leaders 	Moderate

	ignitions.		
--	------------	--	--

*Priority was designated by assessing the estimated value of the resources being protected by the management action. The higher the value of the resource being protected, the higher the priority.

<i>Goal B: Work with state and federal agencies to decrease fuels on adjacent public land to reduce wildfire intensity and impact</i>			
Year 0-2	Management Action	Responsibility	*Priority:
1	Work with agencies to evaluate priority areas for fuel reduction treatments.	<ul style="list-style-type: none"> • Carbon County • Community Leaders • BLM • USFS • FFSL • SITLA • UDWR • UDOT 	High
2	Assist agencies in identifying pinyon-juniper woodlands adjacent to WUI for treatment.	<ul style="list-style-type: none"> • Carbon County • Community Leaders • BLM • USFS • FFSL • SITLA • UDWR 	High
3	Prevent noxious/invasive weed proliferation through management, control, and reduction.	<ul style="list-style-type: none"> • Carbon County • BLM • USFS • SITLA • UDWR 	High
4	Manage mining and oil/gas operations to prevent wildfire ignitions and for the protection of their operations.	<ul style="list-style-type: none"> • Carbon County • USFS • BLM • UDOGM 	High
5	Assist UDOT and railroad company in identifying areas along major transportation corridors that need fuels maintenance.	<ul style="list-style-type: none"> • Carbon County • UDOT • Railway Owners 	Moderate
6	Coordinate with agencies to plan upcoming fuel reduction treatments and offer county support to	<ul style="list-style-type: none"> • Carbon County • Community 	Moderate

	implement the treatments.	Leaders <ul style="list-style-type: none"> • BLM • USFS • FFSL • SITLA • UDWR 	
Year 2-5	Management Action	Responsibility	*Priority:
1	Conduct fuel reduction treatments on USFS-administered land in high-priority areas.	<ul style="list-style-type: none"> • Carbon County • USFS 	High
2	Conduct fuel reduction treatments on BLM-administered land in high-priority areas.	<ul style="list-style-type: none"> • Carbon County • BLM 	High
3	Conduct fuel reduction treatments on State-managed land in high-priority areas.	<ul style="list-style-type: none"> • Carbon County • FFSL • SITLA • UDWR 	High
4	Reduce undesirable fuels adjacent to riparian areas to reduce fire impacts and maintain channel stability.	<ul style="list-style-type: none"> • Carbon County • Land Owners • Appropriate agencies 	Low
5	Manage vegetation adjacent to roadways, trails, and railroad lines to prevent wildfire ignitions and to create green strips and fuel breaks.	<ul style="list-style-type: none"> • Carbon County • Land Owners • Appropriate agencies 	Moderate
6	Manage recreation (trails, campsites, etc.) to prevent wildfire ignitions and to reduce fuel loading.	<ul style="list-style-type: none"> • Carbon County • Land Owners • Appropriate agencies 	Moderate
7	Maintain clear zones for utility corridors and infrastructure.	<ul style="list-style-type: none"> • Carbon County • Utility Companies • Utility Operators 	High
8	Support wildlife habitat improvement projects that also reduce wildfire risk.	<ul style="list-style-type: none"> • Carbon County • Appropriate Agencies 	Moderate
9	Support agencies in post-fire rehabilitation/watershed restoration projects to reduce adverse impacts after fires.	<ul style="list-style-type: none"> • Carbon County • Appropriate Agencies 	High
Year 5-10	Management Action	Responsibility	*Priority:

1	Reduce beetle-killed timber within and adjacent to the community	<ul style="list-style-type: none"> Carbon County Appropriate Agencies 	Moderate
2	Designate community shooting areas and create/enforce ordinances to prevent firearm ignitions.	<ul style="list-style-type: none"> Carbon County Appropriate Agencies 	Moderate

*Priority was designated by assessing the estimated value of the resources being protected by the management action. The higher the value of the resource being protected, the higher the priority.

<i>Goal C: Evaluate, improve, and maintain community wildfire preparations and response facilities/equipment</i>			
Year 0-2	Management Action	Responsibility	*Priority:
1	Work with community leaders to evaluate community wildfire preparedness and identify deficiencies (e.g., manpower, equipment, infrastructure, etc.).	<ul style="list-style-type: none"> Carbon County Community Leaders/Fire Professionals 	High
2	Assist communities in correcting or mitigating community wildfire preparedness deficiencies as needed.	<ul style="list-style-type: none"> Carbon County Community Leaders 	High
3	Identify existing fuel breaks and propose other strategic fuel break locations.	<ul style="list-style-type: none"> Carbon County Community Leaders/Fire Professionals 	High
4	Construct fuel breaks in priority areas.	<ul style="list-style-type: none"> Carbon County 	Moderate
5	Inspect and test all hydrants, hoses, and equipment to ensure/maintain proper function.	<ul style="list-style-type: none"> Carbon County Community Fire Professionals 	High
6	Identify GPS coordinates for available water sources for fire suppression.	<ul style="list-style-type: none"> Carbon County Community Leaders Emergency Response Entities 	High
7	Identify suitable escape routes for residents and emergency response personnel.	<ul style="list-style-type: none"> Carbon County Community Leaders Emergency Response 	High

		Entities	
Year 2-5	Management Action	Responsibility	*Priority:
1	Review community signage to ensure escape routes and safe areas are clearly signed with fire resistant sign materials.	<ul style="list-style-type: none"> • Carbon County • Community Leaders • Emergency Response Entities 	Moderate
2	Evaluate bridges and culverts to ensure that the weight of emergency vehicles can be supported.	<ul style="list-style-type: none"> • Carbon County • Community Leaders • Emergency Response Entities 	Moderate
3	Work to anticipate future community growth and identify additional fire suppression resources that will be required in the future.	<ul style="list-style-type: none"> • Carbon County • Community Leaders • Emergency Response Entities 	Moderate
Year 5-10	Management Action	Responsibility	*Priority:
1	Acquire additional fire suppression resources as dictated by anticipated needs.	<ul style="list-style-type: none"> • Carbon County • Community Leaders • Emergency Response Entities 	Moderate

*Priority was designated by assessing the estimated value of the resources being protected by the management action. The higher the value of the resource being protected, the higher the priority.

<i>Goal D: Coordinate with communities to develop a comprehensive emergency response plan</i>			
Year 0-2	Management Action	Responsibility	*Priority:
1	Develop an evacuation plan with safe areas.	<ul style="list-style-type: none"> • Carbon County • Community Leaders • Emergency 	High

		Response Entities	
2	Identify homebound residents or other persons needing additional assistance for emergency evacuation.	<ul style="list-style-type: none"> • Carbon County • Community Leaders • Emergency Response Entities 	High
Year 2-5	Management Action	Responsibility	*Priority:
1	Develop reverse 911 notification system or other similar community communication plan.	<ul style="list-style-type: none"> • Carbon County • Community Leaders • Emergency Response Entities 	Low
Year 5-10	Management Action	Responsibility	*Priority:
1	Maintain and revise evacuation plan as necessary	<ul style="list-style-type: none"> • Carbon County • Community Leaders • Emergency Response Entities 	High

*Priority was designated by assessing the estimated value of the resources being protected by the management action. The higher the value of the resource being protected, the higher the priority.

<i>Goal E: Train community leaders and educate community members to prepare for and respond to wildfire</i>			
Year 0-2	Management Action	Responsibility	*Priority:
1	Educate the public on the emergency response plan and make it available to the public.	<ul style="list-style-type: none"> • Carbon County • Community Leaders 	High
2	Fire awareness campaign including brochures, videos, school assemblies, radio advertisements, demonstration areas, and advertised public meetings.	<ul style="list-style-type: none"> • Carbon County • Community Leaders • Fire Professionals 	High

3	Schedule with residents and provide individual property assessments by a fire professional.	<ul style="list-style-type: none"> • Carbon County • Community Leaders • Fire Professionals 	Moderate
4	Hold annual community wildfire preparedness meetings just prior to annual county CWPP review meeting during late spring.	<ul style="list-style-type: none"> • Carbon County • Community Leaders • Fire Professionals 	High
5	Distribute annual flier with dates of trainings, areas of special concern, anticipated fireworks restrictions, etc.	<ul style="list-style-type: none"> • Carbon County • Community Leaders 	Moderate
Year 2-5	Management Action	Responsibility	*Priority:
1	Promote improved house address signage.	<ul style="list-style-type: none"> • Carbon County • Community Leaders 	Low
2	Develop and implement plan to educate new homeowners about emergency response plan.	<ul style="list-style-type: none"> • Carbon County • Community Leaders 	Low
3	Partner with agencies to provide basic and advanced trainings for community officials and fire professionals.	<ul style="list-style-type: none"> • Carbon County • Community Leaders • Fire Professionals • FFSL • USFS • BLM 	High
4	Hold annual community wildfire preparedness meetings just prior to annual county CWPP review meeting during late spring.	<ul style="list-style-type: none"> • Carbon County • Community Leaders • Fire Professionals 	High
5	Distribute annual flier with dates of trainings, areas of special concern, anticipated fireworks restrictions, etc.	<ul style="list-style-type: none"> • Carbon County • Community Leaders 	Moderate
Year 5-10	Management Action	Responsibility	*Priority:
1	Hold annual community wildfire preparedness meetings just prior to annual county CWPP review meeting during late spring.	<ul style="list-style-type: none"> • Carbon County • Community Leaders • Fire 	High

		Professionals	
2	Distribute annual flier with dates of trainings, areas of special concern, anticipated fireworks restrictions, etc.	<ul style="list-style-type: none"> Carbon County Community Leaders 	Moderate

*Priority was designated by assessing the estimated value of the resources being protected by the management action. The higher the value of the resource being protected, the higher the priority.

Goal F: Actively address identified regulatory issues impacting community wildfire prevention and response needs

Year 0-2	Management Action	Responsibility	*Priority:
1	Review and revise or create county ordinances for weed management.	<ul style="list-style-type: none"> Carbon County Community Leaders 	Moderate
2	Work with community leaders to review current ordinances to determine fire protection needs.	<ul style="list-style-type: none"> Carbon County Community Leaders 	High
3	Promote ordinances that address fire protection needs.	<ul style="list-style-type: none"> Carbon County Community Leaders Fire Professionals 	High
Year 2-5	Management Action	Responsibility	*Priority:
1	Promote zoning guidelines that promote adequate space for fire equipment movement and access.	<ul style="list-style-type: none"> Carbon County Community Leaders Fire Professionals 	Low
2	Require fire protection measures in all new commercial and residential construction, including fuel breaks, fire-resistant building materials, etc.	<ul style="list-style-type: none"> Carbon County Community Leaders Fire Professionals 	High

*Priority was designated by assessing the estimated value of the resources being protected by the management action. The higher the value of the resource being protected, the higher the priority.

Goal G: Maintain the commitment to regularly evaluate, update, and maintain planning commitments

Year 0-2	Management Action	Responsibility	*Priority:
1	Review goals and actions in CWPP annually (during late spring) and update as needed.	<ul style="list-style-type: none"> • All Stakeholders 	High
2	Review vegetation maintenance schedule and alter as needed.	<ul style="list-style-type: none"> • Carbon County • Appropriate Agencies 	High
Year 2-5	Management Action	Responsibility	*Priority:
1	Review goals and actions in CWPP annually (during late spring) and update as needed.	<ul style="list-style-type: none"> • All Stakeholders 	High
2	Review vegetation maintenance schedule and alter as needed.	<ul style="list-style-type: none"> • Carbon County • Appropriate Agencies 	High
Year 5-10	Management Action	Responsibility	*Priority:
1	Review goals and actions in CWPP annually (during late spring) and update as needed.	<ul style="list-style-type: none"> • All Stakeholders 	High
2	Review vegetation maintenance schedule and alter as needed.	<ul style="list-style-type: none"> • Carbon County • Appropriate Agencies 	High

*Priority was designated by assessing the estimated value of the resources being protected by the management action. The higher the value of the resource being protected, the higher the priority.

Priority Area 8: East Carbon

Priority Area 8 includes approximately 162,000 acres of land, which encompasses much of the SR-123 corridor and the foothills below the Book Cliffs (see Figures 1 and 9). East Carbon is the only municipality within this priority area, which also includes the community of Columbia. East Carbon is accessible year-round. East Carbon is small and somewhat ill-equipped with regards to fire suppression capabilities; however, East Carbon can utilize fire suppression resources from Sunnyside. Other resources may also be utilized for fire suppression, including two county-owned 4,000 gallon water tenders, county-owned bulldozers and graders, as well as state and federally-owned fire engines.

Currently, much of the area is used as residential area, transportation, agriculture, recreation, and mineral extraction. Elevation ranges from approximately 5,600 to 7,100 feet above sea level. Vegetation in the area is primarily composed of sagebrush steppe, with some desert scrub/steppe, agricultural vegetation, riparian vegetation, and pinyon-juniper woodlands. Existing fire breaks include SR-123, SR-124, other established roadways within the priority area, agricultural land, and mosaics of vegetation consisting of low, sparse shrubs and grasses. Water sources for fire suppression activities could include Grassy Trail Reservoir, Grassy Trail Creek, or the Sunnyside Power Plant Pond.

According to the UWRAP data, this area has very little wildfire risk and threat, likely due to the sparse vegetative fuels, gentle slopes, and few major roadways. The greatest wildfire risk and threat occurs on the densely vegetated, steep slopes located just north of Sunnyside and East Carbon. Recreation in this area may increase the probability of campfire-ignition wildfires. New or existing developments constructed adjacent to vegetative fuels may also increase the probability of wildfire.

According to the UWRAP data, there have not been any recorded major wildfires within this priority area during the past 20 years, but analysis of other sources may reveal a more-comprehensive fire history of the area. The BLM conducted fuel reduction treatments in the areas north of East Carbon between the years 2006 and 2007; these treatments targeted closed canopy pinyon-juniper woodlands that pose risk for catastrophic wildfire.

Due to the steep terrain, the limited accessible roadways, and the lack of fire suppression resources in this area, ground response to wildfires on the eastern edge of the priority area is expected to be slow. Throughout the remainder of the priority area, gentler slopes would provide greater accessibility, and would reduce ground response time.

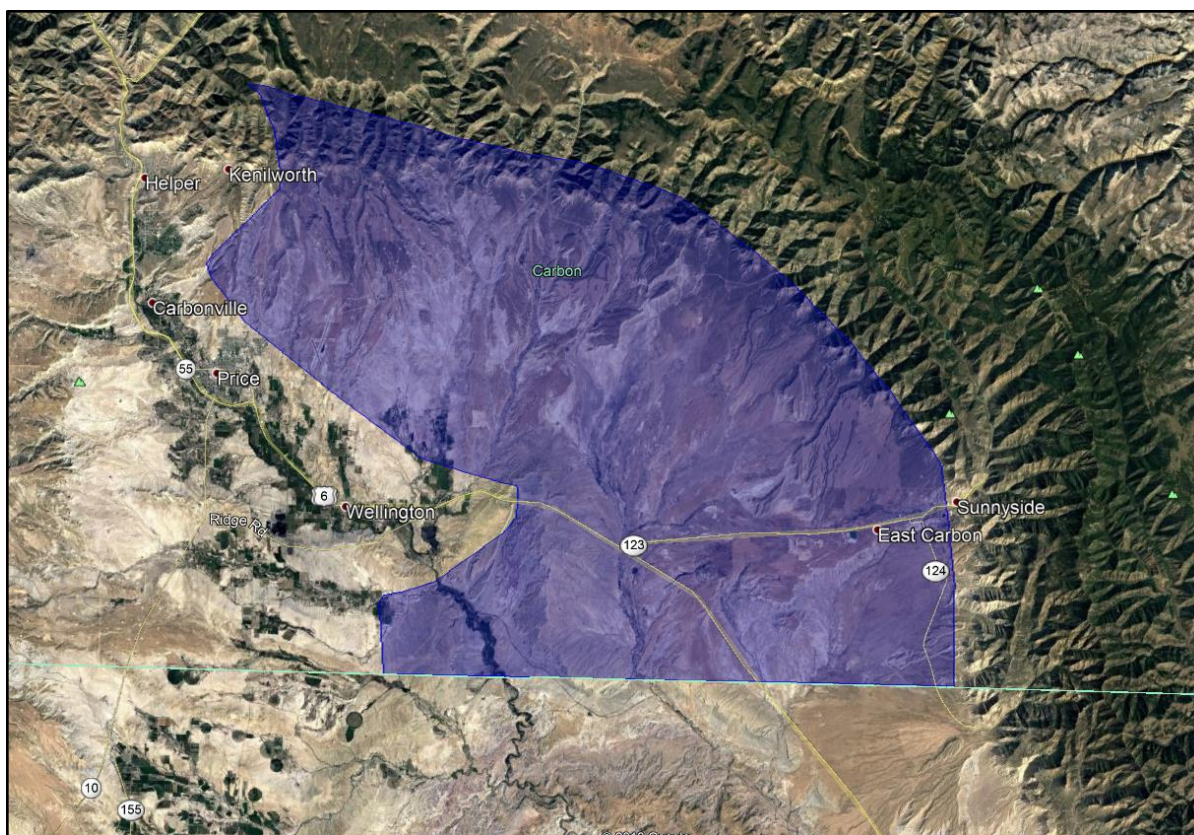


Figure 9: East Carbon 2019 Existing Condition

Priority Area 8 (East Carbon) Goals and Specific Actions

- A. Decrease fuels around key areas within and around communities to reduce wildfire intensity and impact
- B. Work with state and federal agencies to decrease fuels on adjacent public land to reduce wildfire intensity and impact
- C. Evaluate, improve, and maintain community wildfire preparations and response facilities/equipment
- D. Coordinate with communities to develop a comprehensive emergency response plan
- E. Train community leaders and educate community members to prepare for and respond to wildfire
- F. Actively address identified regulatory issues impacting community wildfire prevention and response needs
- G. Maintain the commitment to regularly evaluate, update, and maintain planning commitments

Goal A: Decrease fuels around key areas within and around communities to reduce wildfire intensity and impact

Year 0-2	Management Action	Responsibility	*Priority:
1	Encourage individual lot cleanup and creation of defensible space. Provide guidance and inspection as needed, and involve service organizations.	<ul style="list-style-type: none"> Carbon County Land Owners Service Organizations 	High

2	Work with landowners and service organizations to create defensible spaces around unoccupied or abandoned lots.	<ul style="list-style-type: none"> Carbon County Land Owners Service Organizations 	High
3	Implement community roadside mowing/reseeding projects.	<ul style="list-style-type: none"> Carbon County Community Leaders Land Owners 	High
4	Evaluate fuel loading around communities and identify priority areas for fuel reduction treatments.	<ul style="list-style-type: none"> Carbon County Community Leaders 	Moderate
5	Begin fuel reduction treatments in previously-identified priority areas.	<ul style="list-style-type: none"> Carbon County Community Leaders Land Owners 	Moderate
6	Designate community burn/chipping days and assist residents in removal of fuels from their properties.	<ul style="list-style-type: none"> Carbon County Community Leaders 	Moderate
7	Develop a list of residential properties and businesses with gps coordinates to provide to emergency responders.	<ul style="list-style-type: none"> Carbon County Community Leaders Emergency Response Entities 	High
Year 2-5	Management Action	Responsibility	*Priority:
1	Reduce undesirable fuels adjacent to riparian areas to reduce fire impacts and maintain channel stability.	<ul style="list-style-type: none"> Carbon County 	Low
2	Control noxious weeds that contribute to fire hazard.	<ul style="list-style-type: none"> Carbon County County Weed Dept 	Moderate
3	Manage vegetation adjacent to roadways, trails, and railroad lines to prevent wildfire ignitions or to interrupt contiguous fuels.	<ul style="list-style-type: none"> Carbon County Community Leaders 	Moderate
4	Maintain clear zones for utility corridors and infrastructure.	<ul style="list-style-type: none"> Carbon County Utility Companies Utility Operators 	High
5	Work with landowners to firesafe their propane tanks.	<ul style="list-style-type: none"> Carbon County Propane Provider 	High
Year 5-10	Management Action	Responsibility	*Priority:
1	Designate community shooting areas and create/enforce ordinances to prevent firearm ignitions.	<ul style="list-style-type: none"> Carbon County Community Leaders 	Moderate

*Priority was designated by assessing the estimated value of the resources being protected by the management action. The higher the value of the resource being protected, the higher the priority.

<i>Goal B: Work with state and federal agencies to decrease fuels on adjacent public land to reduce wildfire intensity and impact</i>			
Year 0-2	Management Action	Responsibility	*Priority:
1	Work with agencies to evaluate priority areas for fuel reduction treatments.	<ul style="list-style-type: none"> • Carbon County • Community Leaders • BLM • USFS • FFSL • SITLA • UDWR • UDOT 	High
2	Assist agencies in identifying pinyon-juniper woodlands adjacent to WUI for treatment.	<ul style="list-style-type: none"> • Carbon County • Community Leaders • BLM • USFS • FFSL • SITLA • UDWR 	High
3	Prevent noxious/invasive weed proliferation through management, control, and reduction.	<ul style="list-style-type: none"> • Carbon County • BLM • USFS • SITLA • UDWR 	High
4	Manage mining and oil/gas operations to prevent wildfire ignitions and for the protection of their operations.	<ul style="list-style-type: none"> • Carbon County • USFS • BLM • UDOGM 	High
5	Assist UDOT and railroad company in identifying areas along major transportation corridors that need fuels maintenance.	<ul style="list-style-type: none"> • Carbon County • UDOT • Railway Owners 	Moderate
6	Coordinate with agencies to plan upcoming fuel reduction treatments and offer county support to implement the treatments.	<ul style="list-style-type: none"> • Carbon County • Community Leaders • BLM • USFS • FFSL • SITLA 	Moderate

		<ul style="list-style-type: none"> UDWR 	
Year 2-5	Management Action	Responsibility	*Priority:
1	Conduct fuel reduction treatments on USFS-administered land in high-priority areas.	<ul style="list-style-type: none"> Carbon County USFS 	High
2	Conduct fuel reduction treatments on BLM-administered land in high-priority areas.	<ul style="list-style-type: none"> Carbon County BLM 	High
3	Conduct fuel reduction treatments on State-managed land in high-priority areas.	<ul style="list-style-type: none"> Carbon County FFSL SITLA UDWR 	High
4	Reduce undesirable fuels adjacent to riparian areas to reduce fire impacts and maintain channel stability.	<ul style="list-style-type: none"> Carbon County Land Owners Appropriate agencies 	Low
5	Manage vegetation adjacent to roadways, trails, and railroad lines to prevent wildfire ignitions and to create green strips and fuel breaks.	<ul style="list-style-type: none"> Carbon County Land Owners Appropriate agencies 	Moderate
6	Manage recreation (trails, campsites, etc.) to prevent wildfire ignitions and to reduce fuel loading.	<ul style="list-style-type: none"> Carbon County Land Owners Appropriate agencies 	Moderate
7	Maintain clear zones for utility corridors and infrastructure.	<ul style="list-style-type: none"> Carbon County Utility Companies Utility Operators 	High
8	Support wildlife habitat improvement projects that also reduce wildfire risk.	<ul style="list-style-type: none"> Carbon County Appropriate Agencies 	Moderate
9	Support agencies in post-fire rehabilitation/watershed restoration projects to reduce adverse impacts after fires.	<ul style="list-style-type: none"> Carbon County Appropriate Agencies 	High
Year 5-10	Management Action	Responsibility	*Priority:
1	Designate community shooting areas and create/enforce ordinances to prevent firearm ignitions.	<ul style="list-style-type: none"> Carbon County Appropriate Agencies 	Moderate

*Priority was designated by assessing the estimated value of the resources being protected by the management action. The higher the value of the resource being protected, the higher the priority.

Goal C: Evaluate, improve, and maintain community wildfire preparations and response facilities/equipment

Year 0-2	Management Action	Responsibility	*Priority:
1	Work with community leaders to evaluate community wildfire preparedness and identify deficiencies (e.g., manpower, equipment, infrastructure, etc.).	<ul style="list-style-type: none"> • Carbon County • Community Leaders/Fire Professionals 	High
2	Assist communities in correcting or mitigating community wildfire preparedness deficiencies as needed.	<ul style="list-style-type: none"> • Carbon County • Community Leaders 	High
3	Identify existing fuel breaks and propose other strategic fuel break locations.	<ul style="list-style-type: none"> • Carbon County • Community Leaders/Fire Professionals 	High
4	Construct fuel breaks in priority areas.	<ul style="list-style-type: none"> • Carbon County 	Moderate
5	Inspect and test all hydrants, hoses, and equipment to ensure/maintain proper function.	<ul style="list-style-type: none"> • Carbon County • Community Fire Professionals 	High
6	Identify GPS coordinates for available water sources for fire suppression.	<ul style="list-style-type: none"> • Carbon County • Community Leaders • Emergency Response Entities 	High
7	Identify suitable escape routes for residents and emergency response personnel.	<ul style="list-style-type: none"> • Carbon County • Community Leaders • Emergency Response Entities 	High
Year 2-5	Management Action	Responsibility	*Priority:
1	Review community signage to ensure escape routes and safe areas are clearly signed with fire resistant sign materials.	<ul style="list-style-type: none"> • Carbon County • Community Leaders • Emergency Response 	Moderate

		Entities	
2	Evaluate bridges and culverts to ensure that the weight of emergency vehicles can be supported.	<ul style="list-style-type: none"> • Carbon County • Community Leaders • Emergency Response Entities 	Moderate
3	Work to anticipate future community growth and identify additional fire suppression resources that will be required in the future.	<ul style="list-style-type: none"> • Carbon County • Community Leaders • Emergency Response Entities 	Moderate
Year 5-10	Management Action	Responsibility	*Priority:
1	Acquire additional fire suppression resources as dictated by anticipated needs.	<ul style="list-style-type: none"> • Carbon County • Community Leaders • Emergency Response Entities 	Moderate

*Priority was designated by assessing the estimated value of the resources being protected by the management action. The higher the value of the resource being protected, the higher the priority.

<i>Goal D: Coordinate with communities to develop a comprehensive emergency response plan</i>			
Year 0-2	Management Action	Responsibility	*Priority:
1	Develop an evacuation plan with safe areas.	<ul style="list-style-type: none"> • Carbon County • Community Leaders • Emergency Response Entities 	High
2	Identify homebound residents or other persons needing additional assistance for emergency evacuation.	<ul style="list-style-type: none"> • Carbon County • Community Leaders • Emergency Response Entities 	High

Year 2-5	Management Action	Responsibility	*Priority:
1	Develop reverse 911 notification system or other similar community communication plan.	<ul style="list-style-type: none"> • Carbon County • Community Leaders • Emergency Response Entities 	Low
Year 5-10	Management Action	Responsibility	*Priority:
1	Maintain and revise evacuation plan as necessary	<ul style="list-style-type: none"> • Carbon County • Community Leaders • Emergency Response Entities 	High

*Priority was designated by assessing the estimated value of the resources being protected by the management action. The higher the value of the resource being protected, the higher the priority.

<i>Goal E: Train community leaders and educate community members to prepare for and respond to wildfire</i>			
Year 0-2	Management Action	Responsibility	*Priority:
1	Educate the public on the emergency response plan and make it available to the public.	<ul style="list-style-type: none"> • Carbon County • Community Leaders 	High
2	Fire awareness campaign including brochures, videos, school assemblies, radio advertisements, demonstration areas, and advertised public meetings.	<ul style="list-style-type: none"> • Carbon County • Community Leaders • Fire Professionals 	High
3	Schedule with residents and provide individual property assessments by a fire professional.	<ul style="list-style-type: none"> • Carbon County • Community Leaders • Fire Professionals 	Moderate
4	Hold annual community wildfire preparedness meetings just prior to annual county CWPP review meeting during late spring.	<ul style="list-style-type: none"> • Carbon County • Community Leaders • Fire 	High

		Professionals	
5	Distribute annual flier with dates of trainings, areas of special concern, anticipated fireworks restrictions, etc.	<ul style="list-style-type: none"> Carbon County Community Leaders 	Moderate
Year 2-5	Management Action	Responsibility	*Priority:
1	Promote improved house address signage.	<ul style="list-style-type: none"> Carbon County Community Leaders 	Low
2	Develop and implement plan to educate new homeowners about emergency response plan.	<ul style="list-style-type: none"> Carbon County Community Leaders 	Low
3	Partner with agencies to provide basic and advanced trainings for community officials and fire professionals.	<ul style="list-style-type: none"> Carbon County Community Leaders Fire Professionals FFSL USFS BLM 	High
4	Hold annual community wildfire preparedness meetings just prior to annual county CWPP review meeting during late spring.	<ul style="list-style-type: none"> Carbon County Community Leaders Fire Professionals 	High
5	Distribute annual flier with dates of trainings, areas of special concern, anticipated fireworks restrictions, etc.	<ul style="list-style-type: none"> Carbon County Community Leaders 	Moderate
Year 5-10	Management Action	Responsibility	*Priority:
1	Hold annual community wildfire preparedness meetings just prior to annual county CWPP review meeting during late spring.	<ul style="list-style-type: none"> Carbon County Community Leaders Fire Professionals 	High
2	Distribute annual flier with dates of trainings, areas of special concern, anticipated fireworks restrictions, etc.	<ul style="list-style-type: none"> Carbon County Community Leaders 	Moderate

*Priority was designated by assessing the estimated value of the resources being protected by the management action. The higher the value of the resource being protected, the higher the priority.

Goal F: Actively address identified regulatory issues impacting community wildfire prevention and response needs

Year 0-2	Management Action	Responsibility	*Priority:
1	Review and revise or create county ordinances for weed management.	<ul style="list-style-type: none"> Carbon County Community Leaders 	Moderate
2	Work with community leaders to review current ordinances to determine fire protection needs.	<ul style="list-style-type: none"> Carbon County Community Leaders 	High
3	Promote ordinances that address fire protection needs.	<ul style="list-style-type: none"> Carbon County Community Leaders Fire Professionals 	High
Year 2-5	Management Action	Responsibility	*Priority:
1	Promote zoning guidelines that promote adequate space for fire equipment movement and access.	<ul style="list-style-type: none"> Carbon County Community Leaders Fire Professionals 	Low
2	Require fire protection measures in all new commercial and residential construction, including fuel breaks, fire-resistant building materials, etc.	<ul style="list-style-type: none"> Carbon County Community Leaders Fire Professionals 	High

*Priority was designated by assessing the estimated value of the resources being protected by the management action. The higher the value of the resource being protected, the higher the priority.

Goal G: Maintain the commitment to regularly evaluate, update, and maintain planning commitments

Year 0-2	Management Action	Responsibility	*Priority:
1	Review goals and actions in CWPP annually (during late spring) and update as needed.	<ul style="list-style-type: none"> All Stakeholders 	High
2	Review vegetation maintenance schedule and alter	<ul style="list-style-type: none"> Carbon County 	High

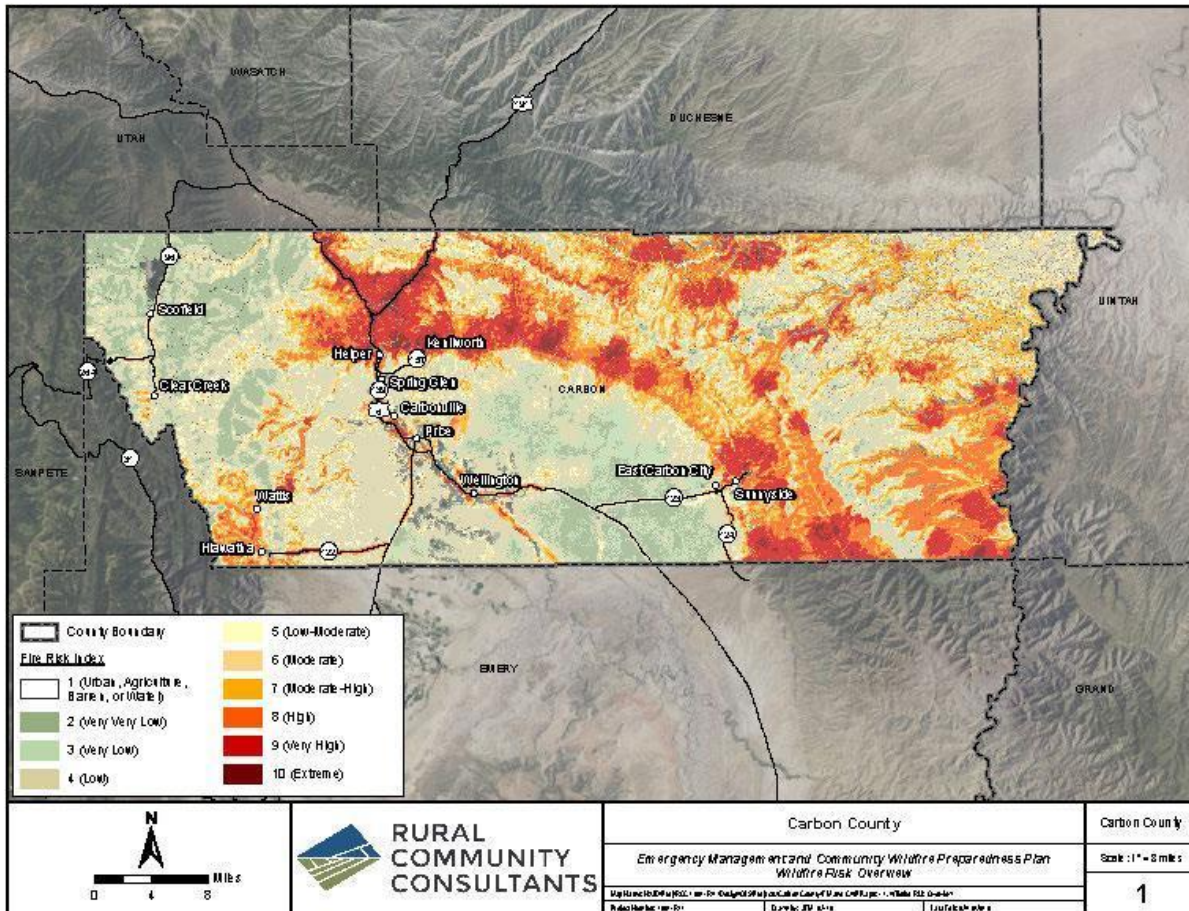
	as needed.	<ul style="list-style-type: none"> • Appropriate Agencies 	
Year 2-5	Management Action	Responsibility	*Priority:
1	Review goals and actions in CWPP annually (during late spring) and update as needed.	<ul style="list-style-type: none"> • All Stakeholders 	High
2	Review vegetation maintenance schedule and alter as needed.	<ul style="list-style-type: none"> • Carbon County • Appropriate Agencies 	High
Year 5-10	Management Action	Responsibility	*Priority:
1	Review goals and actions in CWPP annually (during late spring) and update as needed.	<ul style="list-style-type: none"> • All Stakeholders 	High
2	Review vegetation maintenance schedule and alter as needed.	<ul style="list-style-type: none"> • Carbon County • Appropriate Agencies 	High

*Priority was designated by assessing the estimated value of the resources being protected by the management action. The higher the value of the resource being protected, the higher the priority.

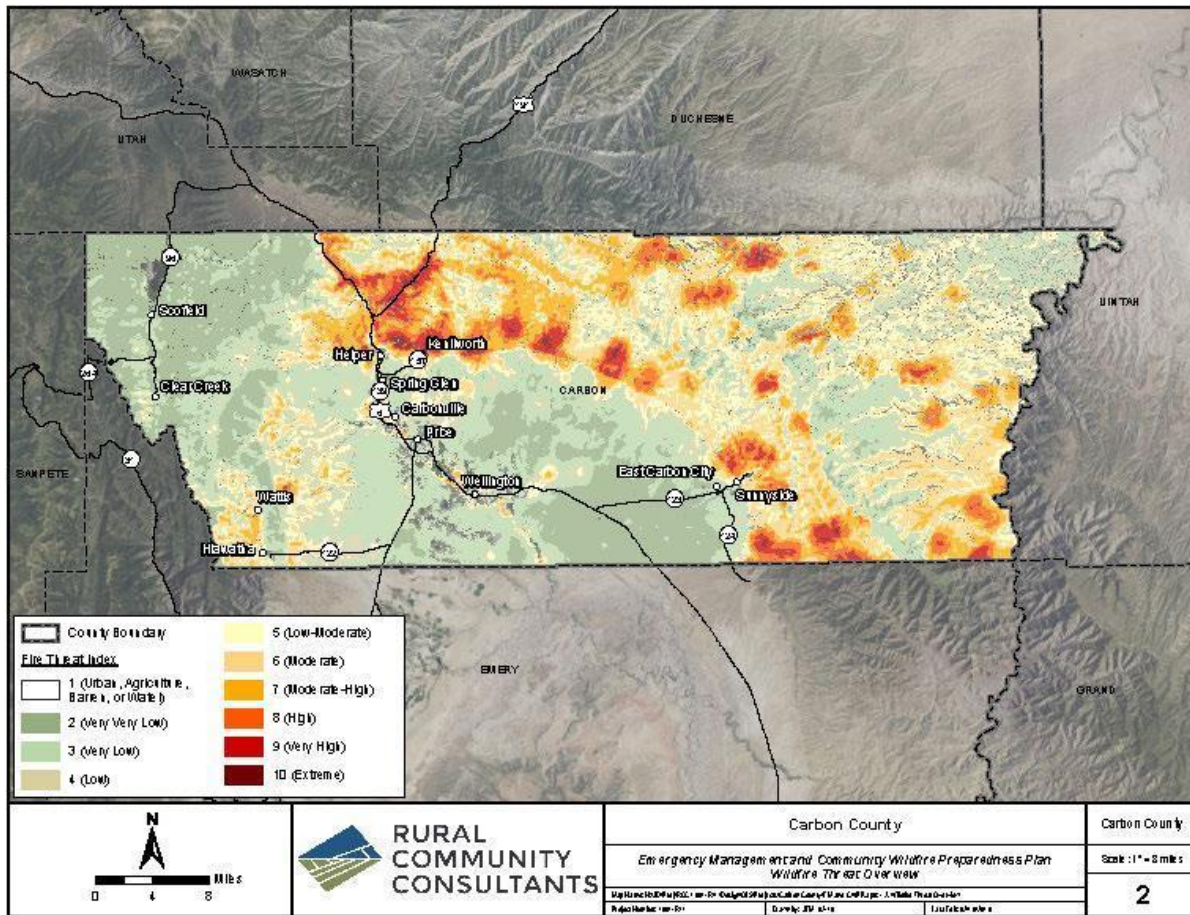
MAPS

Clicking on the map images below will open a larger pdf version.

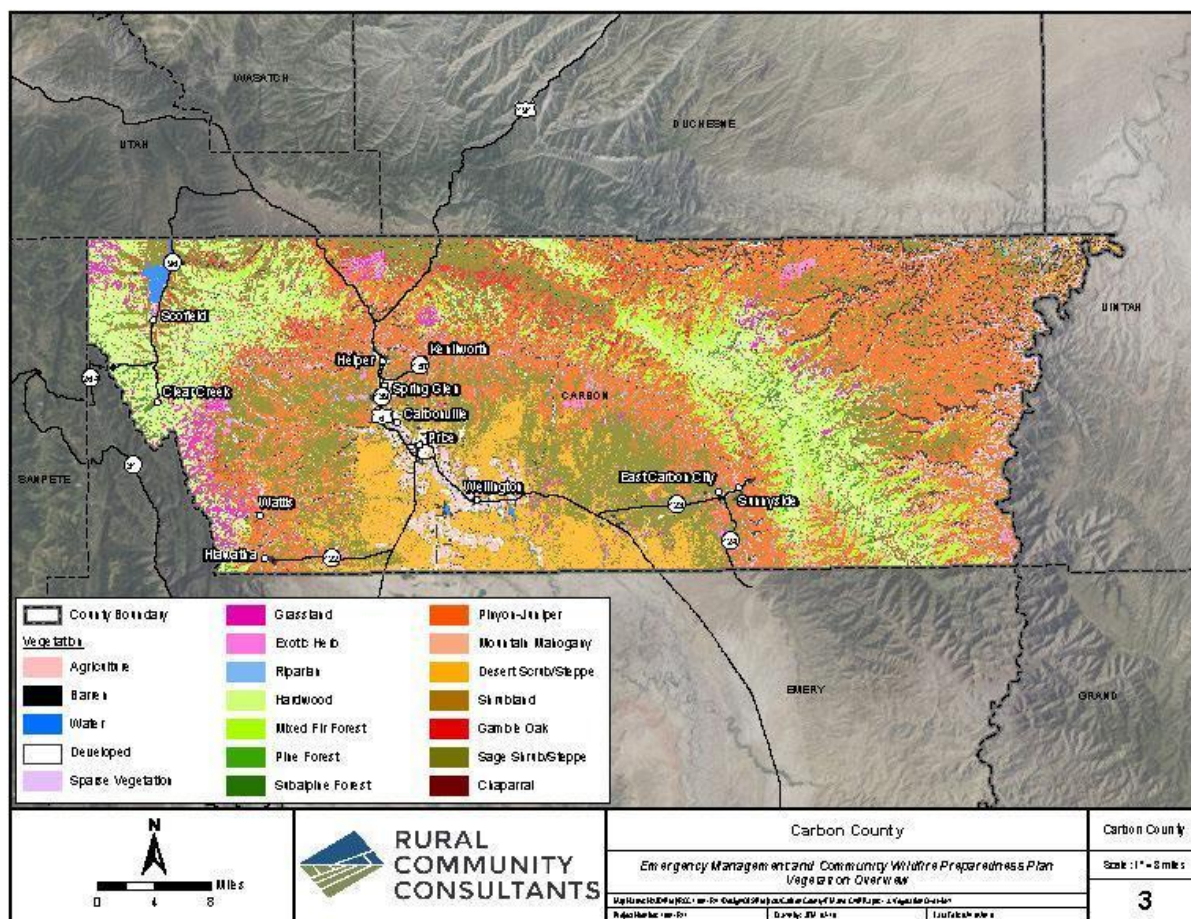
Wildfire Risk Overview



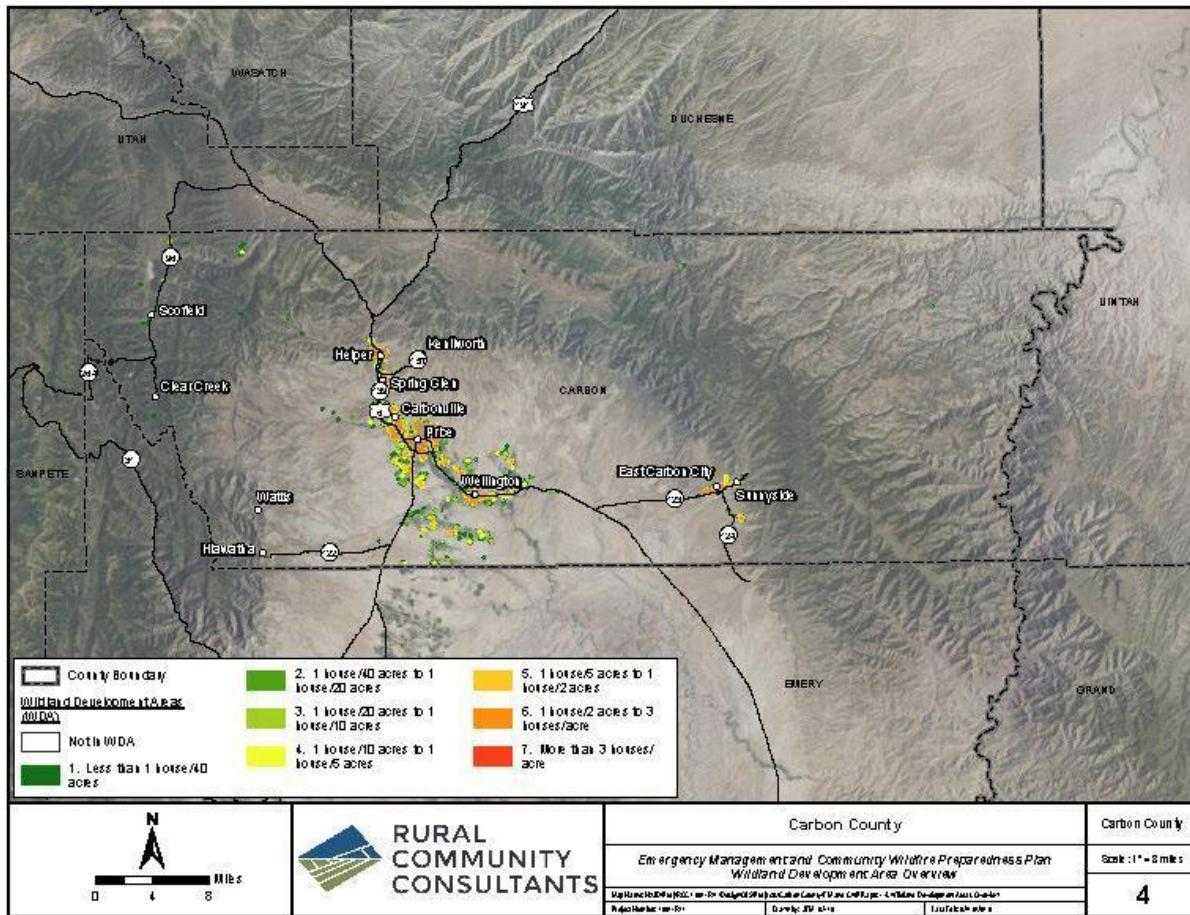
Wildfire Threat Overview



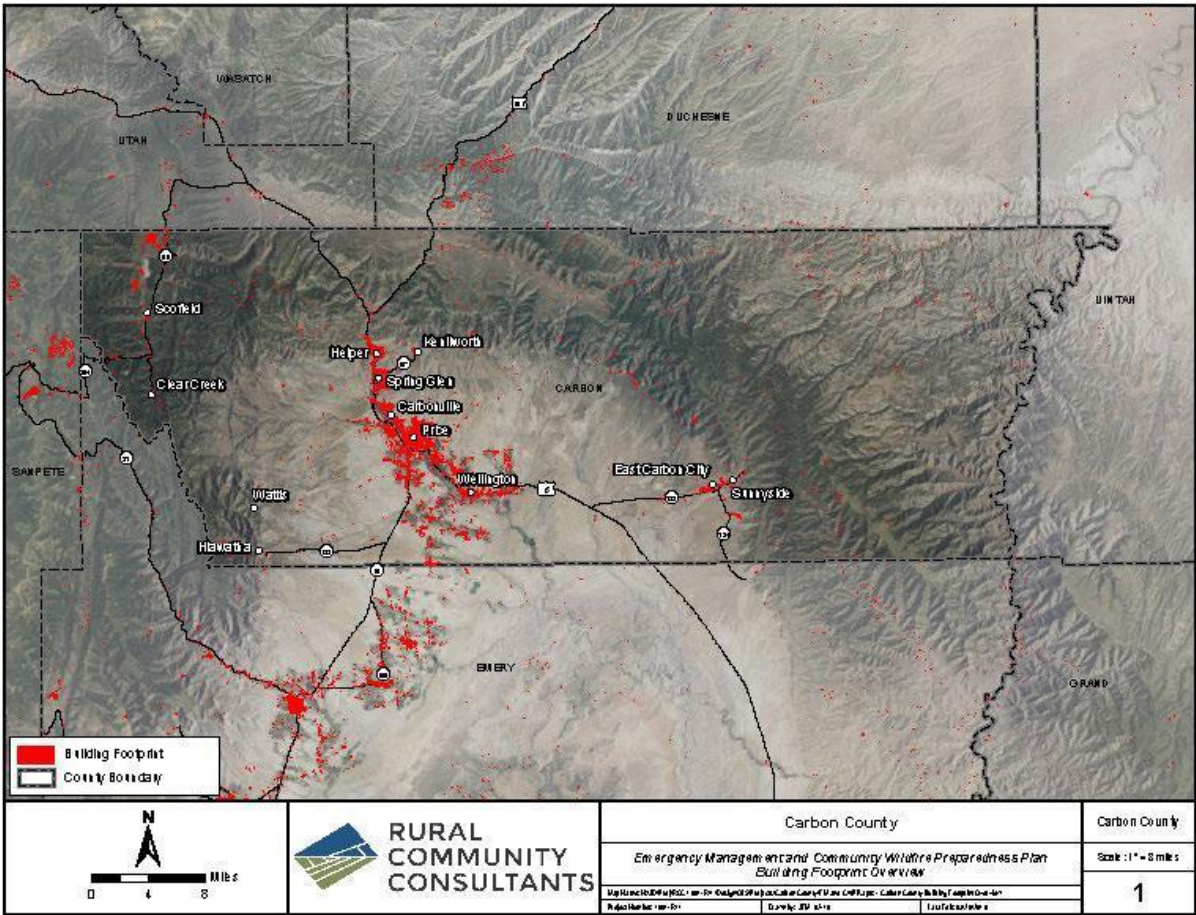
Vegetation Overview



Wildland Development Areas Overview



Carbon County Building Footprint Overview



APPENDIX

Suggested WUI Interface Ordinance Language

ZONING ORDINANCE SUGGESTIONS

Purpose:

The purpose of this zone is to establish minimum regulations consistent with nationally recognized good practice for the safeguarding of life and property. Regulations in this zone are intended to mitigate the risk to life and structures from intrusion of fire from wildland fire exposures and fire exposures from adjacent structures and to mitigate structure fires from spreading to wildland fuels. The development and use of property in wildland-urban interface areas is a potential threat to life and property from fire and resulting erosion. Safeguards to prevent the occurrence of fires and to provide adequate fire-protection facilities to control the spread of fire in wildland-urban interface areas shall be in accordance with this zone.

General Regulations:

The supplementary regulations of this zone will be as outlined in the 2006 Wildland Urban Interface code as adopted in (the city's building code). The provisions of this zone shall apply to the construction, alteration, movement, repair, maintenance and use of any building, structure or premises within the Urban-Wildland Interface Overlay Zone.

Buildings or conditions in existence at the time of the adoption:

Buildings or conditions in existence at the time of the adoption of this zone are allowed to have their use or occupancy continued, if the condition, use or occupancy was legal at the time of the adoption of this zone, provided that continued uses do not constitute a distinct danger to life or property.

Location of Overlay:

This zone will only be overlaid and shown on existing zoning districts on the (city's official zoning map name). The requirements of this zone will be additional to the requirements of the base zone on which the overlay has been placed.

Conflict:

In cases where the standards of the base zone and the overlay zone conflict, the stricter of the two requirements will stand and be upheld.

Administration and Enforcement:

It will be the responsibility of the (insert whatever position does the building and fire inspections within your city) to ensure that the standards of this zone are met.

BUILDING CODE SUGGESTIONS

Wildland Urban Interface Code:

(insert City name) now adopts by reference the 2006 Utah Wildland Urban Interface Code, published by the International Code Council, and it is made a part of this code as though fully printed in this section.

Administration and Enforcement:

It will be the responsibility of the (insert whatever position does the building and fire inspections within your city) to ensure that these standards are met.

Location of WUI:

The location of the WUI as mentioned in the 2006 Utah Wildland Urban Interface Code, will be interpreted and shown as an overlay zone on (the city's official zoning map name).

Amendments:

Here list any amendments that your building and fire officials feel should be made to the international code after reviewing. (County name) County has already made some amendments and reviewing the County's amendments would be a great place to start when considering changes.

WUI INFORMATION PACKET SUGGESTIONS

The Duchesne County development office makes information packets available to anyone considering building in the WUI area. The packets clarify the expectations before final application decisions are made by the applicant.

2018 Duchesne County
Fire & Emergency Management

Wildland Urban Interface Requirements

In 2006, Duchesne County adopted the WUI Code in accordance with the State of Utah's minimum standards relating to construction in Wildland Interface areas. All property located in Duchesne County's WUI Code is subject to the provisions of the County's Ordinance.

As part of the WUI Code, a compliance inspection is to be conducted determine specific needs that must be completed before a Building Permit can be issued.

The code provisions center around four primary areas; access, construction materials, water supply, and defensible space/fuel modification.

- Address Marker:** All buildings shall have a permanently posted address. Which should be placed at each driveway entrance and be visible from both directions of travel along the road. Numbers or letters must be 4 inch reflective. (WUI Sec 403.6)
- Driveways:** Driveways must be adequate to provide year -round access for emergency vehicles. Driveways shall provide a minimum unobstructed height of 13 feet 6 inches. Driveways in excess of 150 feet in length shall be provided with turnarounds. Driveways in excess of 200 feet in length and less than 20 feet in width shall be provided with turnouts in addition to turnarounds. (WUI Sec 403.2)
- Defensible Space:** If one and a half times the defensible space distance is to be provided. It may decrease the class of ignition resistant construction material used for the building. Please provide a mitigation plan. (WUI Sec 603.3)

Wildland fuels must be cleared from structure:

Required Defensible Space	
Moderate Hazard	30 Feet
High Hazard	50 Feet
Extreme Hazard	100 Feet

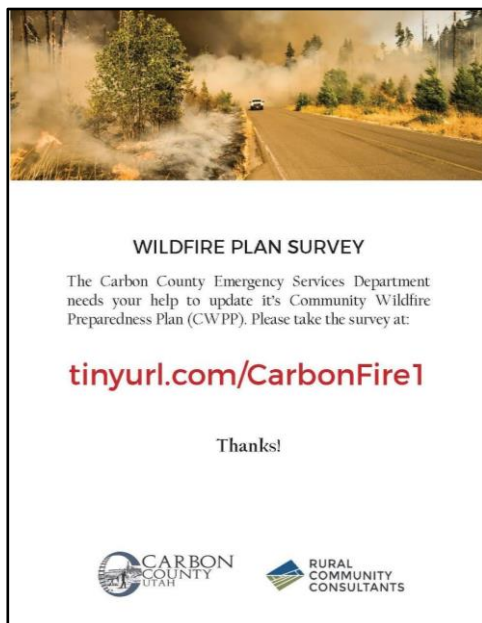
- Water Supply:**
Water System? _____ Hydrant within 500 feet? _____
If no water system is available, Please consult with the Duchesne County Fire Marshal regarding an alternate method.
If no fire hydrant exists within 500 feet, you may be required to install one.
If you have any questions or concerns please do not hesitate to contact our office.

Duchesne County Fire Warden
Nathan Robinson -Cell (435) 790-4741 or Office (435)738-1226

Public Interaction with this CWPP

Public information efforts were conducted in order to draw attention to the initiative, and to encourage residents and business owners to contribute to the creation of goals and strategies. There were a number of different methods to interact with the public:

1. Stakeholder meetings were held in February and May. A contact list was generated, and the public was welcome at these meetings.
2. Public Open House events were conducted in public parks in Sunnyside, Price, and Helper in May.
3. Presentation at the Carbon County Home and Garden Show (held in March). This included brief radio segments where people were invited to learn more.
4. The Carbon County Emergency Management website was updated with information about wildfire planning.
5. Social media advertisements were also made to promote a survey, location of events, etc.



Suggestions for Public Education Outreach

Public education and outreach to reduce the risk of wildfires can be cheap and effective. It can take many forms and can be difficult to know where to begin. This section includes some examples and principles to help the community gets started with their public education efforts.

Types of Outreach:

The first step of a conduct a public education campaign, with particular attention paid to owners of vacant lots for wildfire awareness is deciding what topics will be covered and what the end goal is. After this though is another important step often overlooked, how are is the message going to be carried to the audience. What platform or tool you use is almost as important as your message. Things such as videos about defensible space, brochures for homeowners, and more. Platforms like social media can be cheap and easy to use, fliers can be distributed in person, radio can reach people when they have time and are listening, and newspapers can spark local change. Recently, social media has been used with increasing success to reach the public. If your organization's Facebook page doesn't reach enough people, buy an add. The return on investment is often less than a dollar per person who sees the add. Overall, whatever method is chosen for the campaign should be clear and concise and have a strategy for why that medium is being used.

Inspections:

A recurring goal in the CWPP is the need for local inspections of at-risk properties. However, the community decides to conduct these and what is required at the end of them is of less importance than the teaching opportunity. Use these inspections as an opportunity to hand out a flier and teach residents about how they can keep their property safe. This will often be motivation enough for a citizen to take action.

Recurring Events:

Regular events that raise wildfire awareness are essential to effective education. People will most likely need to hear the message a couple times before it sinks in and even a couple more times before they take action. A suggested event in the CWPP is a community chipper day, where residents can bring vegetation from their property and have it disposed of for free. Also, any social media or advertising campaign needs to be repeated frequently enough for the message to get across. This way residents will have a dependable source to look to when they have questions.

Area Specific:

Each area and city has their own problems. Historic ignition sources may differ from place to place, so the types of mitigation practices will change from place to place. Make sure that when a campaign is produced, it addresses specific concerns of that area.

Works Cited

- Brooks, M. L. and J. C. Chambers. 2011. Resistance to invasion and resilience to fire in desert shrublands of North America. *Rangeland Ecology and Management* 64:431-438.
- Federal Emergency Management Agency. 2008. Defensible Space - Home Builder's Guide to Construction in Wildfire Zones. https://www.fema.gov/media-library-data/20130726-1652-20490-9209/fema_p_737_fs_4.pdf. Retrieved 2-20-2019.
- Miller, R. F. and P. E. Wigand. 1994. Holocene changes in semiarid pinyon-juniper woodlands: responses to climate, fire, and human activities in the U.S. Great Basin. *Bioscience* 44:465-474.
- St. John, L. 2009. Green Strips or Vegetative Fuel Breaks. Natural Resource Conservation Service Technical Note TN Plant Materials No. 16.
- U.S. Forest Service. 1999. Issues and Examples of Forest Ecosystem Health Concerns. <https://www.fs.fed.us/foresthealth/publications/update99/issues1.html>. Retrieved 2-20-2019.
- U.S. Forest Service and BLM. 2002. Price Canyon Fire Entrapment Investigation Report, June 30, 2002. <https://www.wildfirelessons.net/HigherLogic/.../DownloadDocumentFile.ashx?1>. Retrieved 3-5-2019.